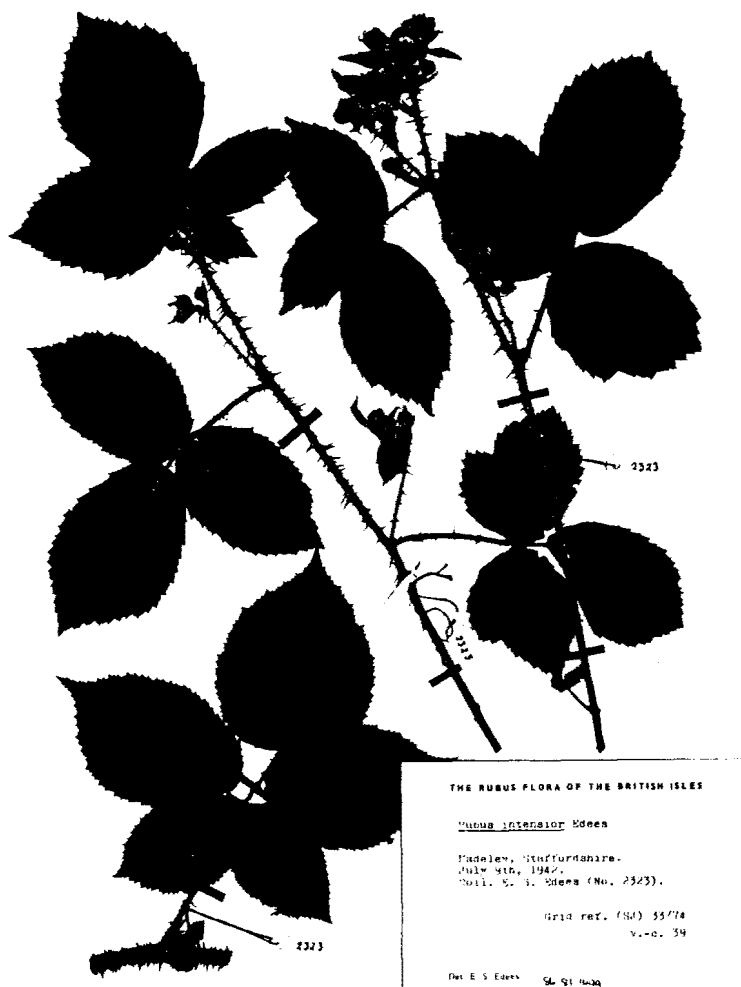


BOTANICAL SOCIETY OF THE BRITISH ISLES

# WELSH BULLETIN

Editor : R. D. Pryce

No. 61, AUTUMN 1996



Photocopy of specimen of *Rubus intensor* (Herb. E. S. Edees, NMW) ( $\times \frac{1}{3}$ )

## CONTENTS

Editorial .....	3
<i>Rubus intensor</i> in North Wales .....	4
Gorse pollination and seed production .....	4
Robert & Agnes Innes - unknown Carmarthenshire botanists .....	6
Welsh Plant Records - 1994 .....	10

All back issues of the BSBI Welsh Bulletin are still available on request (originals or photocopies). Please send cheque (made payable to BSBI Wales), @ £1 per issue, which includes p & p, to - Dr G. Hutchinson, Department of Botany, National Museum & Gallery, Cathays Park, Cardiff CF1 3NP, specifying the issue number, or year (which would have to include the season or month). Large runs - price negotiable.

## EDITORIAL

The effects of the Sea Empress oil spill have been extensively reported in the media but it would appear that the early forecasts of the devastation of Pembrokeshire's coastal flora and fauna for decades to come have been somewhat overstated. That is not to say that the effects are still very serious with wholesale extermination of limpets and periwinkles on rocky shores in parts of West Angle Bay and the near eradication of the rare Cushion Starfish with its population having been reduced from 150 to less than 20 individuals.

Little has been reported, however, of the effects on coastal flora. Speaking to Stephen Evans, who has been closely involved for CCW, and who also let me have sight of parts of the Sea Empress Environmental Evaluation Committee's Initial Report, it would appear that damage is surprisingly small. Localised damage has occurred to rock crevice communities within Milford Haven, including the killing of foliage of such species as *Armeria maritima* (Thrift), *Plantago maritima* (Sea Plantain) and *Festuca rubra* (Red Fescue), caused by the deposition of heavy fuel oil but there have been no detrimental effects have been observable on the outer headlands - all look remarkably healthy! The specific study addressing the effects on lichen communities has not yet started but here also, the initial feeling is that they are not as bad as was originally thought.

Patches of both crude and heavy fuel oil were deposited on saltmarshes at Pwllcrochan, in Castle Pill and Pembroke River and no attempt was made to clean them as to do so would have caused even more damage. Foliage of perennials such as *Atriplex portulacoides* (Sea Purslain) was killed but vegetation appears now to be recovering and is growing through the oil. Effects are, therefore, localised and likely to be relatively short-term.

The large populations of *Zostera angustifolia* (Narrow-leaved Eel-grass) in the Pembroke River and in Angle Bay also appear to be remarkably healthy despite being exposed to both crude and heavy fuel oil. Damage was mainly confined to rutting caused by clean-up teams gaining access.

Although wind action at the time of the incident caused some oil to blow ashore in the form of aerosol, tests on agricultural crops showed that contamination was small. Damage to sand dune and shingle vegetation has also, therefore, been mostly confined to that caused by machinery access and storage and removal of oily waste and was minimised by effective planning and coordination of the operation.

Now that the damage is done, will the lessons be learnt or will we again have to suffer repeated incidents of this nature in the future? Will the industry now be forced to spend the money necessary to put in place effective measures to ensure that a repeat disaster does not occur, either in Milford Haven or elsewhere? If they do not, I fear that we will not have to wait long before a similar disaster happens.

-----

You will all be aware by now that Gwynn Ellis, who has served as Hon Secretary of the Wales Committee for the last 21 years, deserves our warmest congratulations on his appointment as Hon General Secretary of the BSBI. Despite now having retired from the NMW, I fear that he will be far busier than ever he was when working: he also continues as editor of BSBI News and Hon Secretary of the Wales Committee (at least for the present) as well as acting as Welsh coordinator for Atlas 2000 records. Keep up the good work, Gwynn, we're all behind you!

This edition of the Welsh Bulletin consists largely of Gwynn's work, the bulk of it being taken up by the 1994 Welsh Plant Records. In addition there are several shorter articles which I hope will be of interest. As I have repeated on many occasions I am always in search of articles for the Bulletin and its frequency of publication largely depends upon the amount of material received. Please, therefore, put pen to paper if you feel you have anything of interest to bring to Welsh botanists' attention. Don't be shy, even the smallest observation or comment will be worthy of inclusion in a future issue.

The end of the first recording season for Atlas 2000 is approaching. The annual Carmarthenshire recording weekend added several notable records both for the Flora and the Atlas. For instance, *Scleranthus annuus* (Annual Knawel) was recorded in the county for the first time since I took over as VC Recorder (in 1978). I hope that elsewhere in Wales the season has been as successful and trust that the winter months will be expeditiously spent keeping up with all the resulting computer input!

Richard Pryce

## RUBUS INTENSOR IN NORTH WALES

On a visit to Criccieth in September 1994, I was most surprised to see a large brake of what appeared to be *Rubus intensor* (a common bramble in North Staffordshire) growing beneath a high wall. As access was difficult, the bushes were fruiting, plus there were a few specimens of North Wales endemics in my collection anyway, I decided a return visit to North Wales was necessary.

So in July 1995, once specimens of the local endemics had been gathered, the final stop in North Wales before travelling down to Len Margett's Devon/Dorset bramble meeting, was in Criccieth.

Leaning over the wall with the secateurs, a good panicle, but only an immature stem piece of the presumed *Rubus intensor* could be reached. Nevertheless this was sufficient for both A. Newton & M. Porter to confirm the identity of the species.

How did this species arrive at Criccieth? Perhaps a migrating bird rested here or a holiday-maker disposed of an unwanted bag of blackberries over the wall.

In parts of Cheshire & South Lancashire large breaks of *Rubus intensor* can sometimes be found along railway embankments. As the Criccieth site is but 150 yards from a railway line, it is possible that future North Wales populations of *Rubus intensor* may yet await discovery.

Dave Earl, 4 Meadow Way, Brooklyn Park, Gravel Lane, Banks, Nr. Southport, PR9 8BU.

## GORSE POLLINATION AND SEED PRODUCTION

Although *Ulex europaeus* (Gorse) and *Ulex gallii* (Western Gorse) are both common and at times spectacular in West Wales, both species pose problems as challenging as any crossword clues.

The most obvious problem to an investigator is the almost total absence of insect visitors to the billions of flowers of *U. europaeus*. One would suppose that they are designed to be opened by large and powerful insects such as queen bumble bees (*Bombus* species), but after years of watching I can say without a shadow of a doubt that such visits are rare, and one is tempted to speculate that either there is a shortage of bumble bees or far too much *Ulex*.

It is unlikely that there is a shortage of bumble bees in West Wales beyond the relatively low spring number of queens that one expects, because so much of the area, such as unimproved marshes, moors and the coastal strip, is still wild and suitable. Moreover, there are miles of hedgebanks, which is where they normally locate their nests. At the same time there is seldom a shortage of bumble bees visiting *Salix cinerea* subsp. *oleifolia* and *S. caprea*.

Is there then far more *Ulex* than there should be? This is possible. Difficult though it must be for modern farmers to believe, in the 18th century their predecessors actually grew *Ulex* as a crop. Seed was even imported from France under the name of French Furze and it was grown in rows for a variety of uses which included kindling, smelting, household fuel, lime kilns, winter fodder (after crushing), hedging

and 'roads'. Perhaps prior to that, West Wales was covered only by *Ulex gallii* which, having a lower growth habit, is better able to withstand the winter gales. For example, acres of *Ulex europaeus* were browned and destroyed by winds in the Februaries of 1990 and 1991, when I calculated that 50% of it was destroyed along the coast, to the benefit incidentally of the often associated *Erica* species. And at all times the seaward (windward) side of *Ulex* is visibly browned, for it is wind rather than rare frosts which cause the damage along the coast.

Occasionally *Ulex europaeus* is visited *en masse* by hive bees (*Apis mellifera*) in the spring, the requirements being that it must be growing in a nearby, sunny, sheltered site. Although the flowers secrete no nectar the sticky, orange pollen seems (to humans) to be a rich and desirable commodity, yet even the flowers of *Smyrniololus* (Alexanders) are preferred if it happens to grow nearby. If there *really* is no choice, as on Ramsey in April, then the hive bees visit *U. europaeus*.

The above considerations may, however, be largely irrelevant. Towards the end of the main flowering season, billions of flowers remain unsprung and I have been unable to demonstrate any difference in the quantity of seed set as between sprung and unsprung flowers or early and late flowers: they all produce seed. Average number of seeds set was 2.2 per pod out of an original 12 ovules (I think they are not easy to count!). The pods are far too foreshortened to contain 12 seeds anyway. In the related *Cytisus scoparius* (Broom) the longer pods, on average, contain 7 seeds out of an original 15 ovules. So beyond very rare cross pollinations the flowers are normally self-fertilised.

*Ulex gallii* appears altogether better adapted to the West Wales environment. It is rarely damaged by Atlantic or Irish sea winds as it is so low-growing. Rather, it suffers from drying out after rare rain-free summers, along with heather, on the shallow coastal soils where it abounds. Also there are far more insect visitors about in the autumn when it flowers, and they, in turn, can of course hug the ground on windy days. It is visited by the workers of *Bombus lucorum*, *B. lapidarius*, hive bees and also by a small solitary bee which I would have thought would not have the strength to spring the flowers. Whilst one can understand how hive bees require pollen at this season, I fail to see why the workers of *B. lucorum*, with their loaded pollen bags, need pollen, as nests of this species usually disintegrate during the first week of August - another intriguing challenge.

Gordon Knight, 12 Ffordd y Felin, Trefin, Haverfordwest.

## ROBERT & AGNES INNES - UNKNOWN CARMARTHENSHIRE BOTANISTS

Carter (1951 & 1957) in his comprehensive summary of the history of botanizing in Carmarthenshire, offers no comment on the Innes family of Llanelli. Yet, both Robert Virtue Innes who was a 'collector of customs' at Llanelli at the time of its rapid expansion as a coal-exporting port in the latter half of the nineteenth century, and his daughter Agnes were competent botanists who made, in a county context, many noteworthy discoveries. In 1902, there appeared 'Old Llanelly', a compact review of the historical development of Llanelli written by John Innes, and which included a section entitled 'Botany of the District' compiled by a 'Miss Innes' - his sister Agnes. Agnes was born in 1850 and died on 18 January 1937 (an obituary appears in the Llanelly and County Guardian of 28 January 1937). She is buried at Holy Trinity Church, Felinfoel.

In her introduction to the 'Botany of the District', Miss Innes mentions that the list of plants is actually based upon the researches of her father (i.e. Robert Innes), 'whose botanical knowledge was extensive'. Several records of alien or casual species growing on ballast heaps at Llanelli Docks obviously were generated by his professional visits to those areas as a customs officer. At that time, coal was being exported to many parts of Europe, the ships often returning laden with ballast, which was used for the construction or improvement of breakwaters or merely dumped. The locally well-known low hill known as 'Chalky Bank', Seaside (SS 503989) is not a distant Cretaceous outlier, but merely ballast dumped by vessels returning from Denmark. ('Chalky Bank' has now been 'landscaped', grassed-over and planted with shrubs. It is clearly visible from the new coastal link road, with a pylon perched upon it, but it is now no longer possible to pick up fossil echinoderms in the Llanelli area!).

Robert Innes was, incidentally, the grandfather of the landscape artist James Dickson Innes (1887-1914), and influenced the better known Augustus John (Fraser-Jenkins, 1975). The Innes family are believed to have successively lived at Greenfield Villas (on a site now occupied by the cinema at the bottom of Murray Street, Llanelli), New Road and Old Road (the latter address is exactly known - No. 47). John Innes subsequently moved to Tavistock in Devon.

It might now be useful if Miss Innes' list is discussed in the order in which it originally appeared. The grid references given are for the locality cited; the actual site of these old plant records may have differed slightly.

*Acorus calamus* Sweet-flag - noted at the Filter Beds, Felinfoel (SN 516025), the only Carms. record, presumably an introduction. It no longer grows there.

*Misopatis orontium* (as *Antirrhinum Orontium*) Weasel's-snout; Small Snapdragon - 'near Furnace' (SN 503014). A review of the status of this declining species in Carmarthenshire is given by Morgan (1995).

*Aquilegia vulgaris* Columbine - given as occurring (a likely garden escape) near 'Gipseys Lane'. I cannot trace this locality.

*Seriphidium maritimum* (as *Artemesia maritima*) Sea Wormwood - 'Machynys' (SS 51-97-). This local maritime species still grows on the shingle at Penrhyngwyn and has recently spread to colonize the base of the sea wall near Penclacwydd (SS 522984).

*Bryonia dioica* White Bryony - at Five Roads (SN 491053), one of two Carmarthenshire records, neither extant.

*Carduus nutans* Musk Thistle - at Pembrey (SN 43-00-), where it still grows near the harbour.

*Calamintha acinos* Basil Thyme - on the 'Stradey Road' (perhaps the road now called Cwmbach Road or Stradey Park Avenue). This species is more typical of thin, dry and sun-drenched calcareous soils; presumably here it was casual on the unmetalled roads of the period.

*Centaurea calcitrapa* Red Star-thistle - at the docks, Burry Port (SN44-00-). One of the ballast-heap aliens.

*Crepis paludosa* Marsh Hawk's-beard - 'above Felinfoel'. Now only known from wet upland rocks in extreme NE Carms, this is actually not an implausible record, as Dillwyn (1848), for example, quotes Motley's c.1840 record of *Hymenophyllum wilsonii* below Ystradfaï (SN 511046), in a deep valley, now occupied by the Lower Lliedi Reservoir. Damp rocks thereabouts could well also have supported *Crepis paludosa*.

*Cuscuta europaea* Greater Dodder - this parasite of *Urtica dioica* or *Humulus lupulus* was listed as growing at 'Bryn ar y Mor', Furnace [now the Stradey Park Hotel (SN 505014)] and Machynys (SS51-97-).

*Cuscuta epithymum* (as *C. Trifolii*) Dodder. Noted at Brynmor, Seaside (SS 503992).

*Cystopteris fragilis* Brittle Bladder-fern. Again noted as growing 'beyond Felinfoel', presumably in the now submerged Lliedi gorge.

*Epipactis helleborine* (as *E. latifolia*) Broad-leaved Helleborine - 'Stradey' (SN49-01-). There are no recent records from this site, though the species is still widespread in the county.

*E. palustris* Marsh Helleborine - 'Pwll', possibly referring to remnant dune slacks now covered by pulverised fuel-ash deposits from the former Carmarthen Bay Power Station.

*Chamerion angustifolium* (as *Epilobium angustifolium*) Rosebay Willowherb. This now-common species was then sufficiently scarce to warrant the naming of a locality - 'near Furnace Pond' (SN 504022).

*Genista anglica* Petty Whin - near the 'head of Reservoir' (Upper Lliedi Res.) (SN 507050), where it may still survive.

*Geranium columbinum* Long-stalked Crane's-bill - 'near Stradey'.

*Geum rivale* Water Avens - 'listed in Dandy'.

*Inula conyzae* Ploughman's-spikenard - listed at Pembrey where it still grows on the stone breakwater (SN 437061).

*Lepidium ruderae* Narrow-leaved Pepperwort. There are few Carms. records of this crucifer. Innes lists it as occurring at Seaside (SS 50-99-), Llanelli.

*Kickxia elatine* (as *Linaria elatine*). Sharp-leaved Fluellen - 'seabank by sluices', presumably referring to the Seaside/Machynys area (SS59).

*K. spuria* (as *L. spuria*) Round-leaved Fluellen -Trebeddrod (just N. of Furnace) (SN504022).

*Marrubium vulgare* White Horehound -'wasteground'.

*Silybum marianum* (as *Mariana lactea*). Milk Thistle - 'wasteground'.

*Ophioglossum vulgatum* Adder's-tongue - Trebeddrod, Furnace.

*Petasites fragrans* Winter Heliotrope - 'Introduced by the Rabys'. This invasive plant - perhaps expectedly - still grows around Furnace, the site of its introduction. It thrives alongside the bridge over the mineral line (SN 504013) and by the Church Hall (SN 502013); doubtless many local naturalists would have noticed it. The Rabys, who lived at the recently-demolished 'The Dell', Furnace (SN 503014) were prominent local industrialists.

*Picris hieracioides* Hawkweed Oxtongue - 'Pembrey' (a locality not listed by May (1967)).

*Phegopteris connectilis* (as *Polypodium phegopteris*) Beech Fern 'above Cwmbach' (SN 48-02-). I have carefully searched all apparently suitable situations in Cwm Mawr and Cwm Dulais (adjacent wooded dingles) for this fern, to no avail.

*Rhamnus cathartica* Buckthorn - 'Stradey'.

*Frangula alnus* (as *Rhamnus frangula*) Alder Buckthorn - Carmarthen Road. For both species, my local searches have been unsuccessful, though the rather regular presence of brimstone butterflies (whose caterpillars exclusively utilise Buckthorn and Alder Buckthorn) suggests that one or the other (probably *F. alnus*) still persists.

*Rumex pulcher* Fiddle Dock - 'Pembrey'.

*Sagina subulata* Heath Pearlwort - 'Machynys'.

*Salvia verbenaca* Wild Clary - 'Pembrey Ballast Heaps'.

*Silene uniflora* Sea Campion - 'Machynys'.

*Thalictrum minus* (as *T. collinum*) Lesser Meadow-rue - 'Machynys'.

*T. flavum* Common Meadow-rue - 'Spudder's Bridge' (near Kidwelly) (SN434059). This species still grows on the roadside bank opposite the entrance to Muddlescwm Farm.

*Thlaspi arvense* Field Penny-cress - 'near the workhouse' (= Bryntyrion Hospital, SN 515008).



*Viscum album* Mistletoe - 'Introduced by John Innes into gardens.' Interestingly, Mr & Mrs Tallwin reported the occurrence of mistletoe in a garden at New Road, Llanelli in the 1970's (R D Pryce, pers. comm.).

#### Acknowledgements:

Thanks are due to Mr R H Davies of Llanelli Public Library for his friendly assistance in researching the Innes family, and to Dr George Hutchinson of the Department of Botany, National Museum & Gallery of Wales for reading and commenting on the first draft.

#### References:

Carter, P. W. (1951). Botanical Exploration in Carmarthenshire (Part 1). *The Carmarthen Antiquary* 2: 113-122.

Carter, P. W. (1957). Botanical Exploration in Carmarthenshire (Part 2). *The Carmarthen Antiquary* 2: 166-177.

Fraser-Jenkins, A. D. (1975). *J. D. Innes at the National Museum of Wales*. NMW, Cardiff.

Innes, [A]. (1902). Botany of the District. In : *Old Llanelli* by J. Innes, pp.148-155. Cardiff.

Morgan, I. K. (1995). Notes on the recent occurrence of Weasel-snout *Misopates orontium* in Carmarthenshire. *Llanelli Nats. Newsl.* No.58: 3.

I. K. Morgan, Countryside Council for Wales, The Old Post Office, 56 Rhosmaen Street, Llandeilo, Carmarthenshire SA19 6HA.

## WELSH PLANT RECORDS — 1994

Welsh Plant Records are compiled by Gwynn Ellis, 41 Marlborough Road, Roath, CARDIFF CF2 5BU, from reports of BSBI vice-county Recorders to whom records should preferably be sent. Plants are now listed for each county in the order of D.H.Kent's *List of Vascular Plants of the British Isles* (1992), the number in that list preceding the name, so that names changed since 1992 can be given without giving the former name. Latin names also follow Kent (1992) or, if not in that list, C.A.Stace's *New Flora of the British Isles* (1991), E.J.Clement & M.C.Foster's *Alien Plants of the British Isles* (1994) or T.B.Ryves, E.J.Clement & M.C.Foster's *Alien Grasses of the British Isles* (1996), authorities for Latin names are no longer given unless the name is not in any of these works. English names are those in *English Names of Wild Flowers* ed. 2 (1986) by Dony *et al.* or, if not in that list, Stace (1991), Clement & Foster (1994) or Ryves, Clement & Foster (1996). English names enclosed by square brackets do not occur in any of these books but are included in Davies & Jones (1995). Welsh names are those in Dafydd Davies & Arthur Jones' *Welsh names of plants* (1995).

The following symbols are used:

- \* to indicate a new v.c. record
- + to indicate a new hectad record
- ! to indicate that the species is not native to Wales
- \$ to indicate a species which, although native in some parts of Wales, is not so in the locality recorded
- [ ] to indicate that the record, previously published in error, should be deleted
- † to indicate that the taxon is now believed to be extinct in the locality cited

Where entries consist of one record only, the symbols appear before the species number; where entries consist of more than one record, the symbols appear before each record, except for the ! sign which, if required, is always placed before the species number.

In general only records which are additional to those given in *Flowering Plants of Wales* by R.G.Ellis (1983), *Distribution of Pteridophyta in Wales* by G.Hutchinson & B.A.Thomas (1992), *Flora of Flintshire* by G.Wynne, *Flora of Glamorgan* by A.E.Wade *et al.* and *Flora of Montgomeryshire* by I.Truman *et al.* are listed. Other records are included at the discretion of the vice-county Recorder. The minimum grid reference is to a hectad but, if supplied by the recorder, references to a 1 km or even a 100 m square may be included. A letter in parenthesis following a 4 figure grid reference indicates a tetrad

The Vice-county Recorders from 1/9/1996 are:

MONMOUTH, VC 35; T.G.Evans, La Cuesta, Moun-ton Road, Chepstow, Gwent NP6 5BS  
 GLAMORGAN, VC 41(West); Dr Q.O.N.Kay, Dept. of Botany, University College, Singleton Park, Swansea, West Glamorgan SA2 8PP  
 GLAMORGAN, VC 41(East); J.P.Woodman, Countryside Council for Wales, South Wales Area Office, Unit 4, Castleton Court, Fortran Way, St Mellons, Cardiff CF3 0LT  
 BRECON, VC 42; M.Porter, Aberho-yw Farm, Cyffredyn Lane, Llangynidr, near Crickhowell, Powys NP8 1LR  
 RADNOR, VC 43; Dr D.R.Humphreys, Knill Court, Knill, near Presteigne, Powys LD8 2PR  
 CARMARTHEN, VC 44; R.D.Pryce, Trevethin, School Road, Pwll, Llanelli, Dyfed SA15 4AL  
 PEMBROKE, VC 45; S.B.Evans, Glan-y-Mor, Dinas Cross, Newport, Dyfed SA42 0UQ  
 CARDIGAN, VC 46; A.O.Chater, Windover, Penyrangor, Aberystwyth, Dyfed SY23 1BJ  
 MONTGOMERY, VC 47; Mrs M.Wainwright, Troy, 1 Green End, Oswestry, Shropshire SY11 1BT  
 MERIONETH, VC 48; P.M.Benoit, Pencarreg, Barmouth, Gwynedd LL42 1BL  
 CAERNARFON, VC 49; Mr G.Battershall, 15 Rhodfa'r Grug, Upper Colwyn Bay, Conwy LL29 6DJ  
 DENBIGH, VC 50; Mrs J.A.Green, Coed Duon, Tremeirchion, St Asaph, Denbighshire LL17 0UH  
 FLINT, VC 51; Dr G.Wynne, Gwylfa, Lixwm, Holywell, Flintshire CH8 8NQ  
 ANGLESEY, VC 52; N.H.Brown, Treborth Botanic Garden, University College of North Wales, Bangor, Gwynedd

## MONMOUTH, v.c. 35 (comm. T.G.Evans)

- 16/4/1. *Gymnocarpium dryopteris* (Oak Fern) (Llawredynen y Derw). Two patches on N facing shady bank, Tintern Cross, SO/51.00(A), S.J.Tyler, 1980, T.G.Evans, 1994. A very local & uncommon plant in the VC.
- +145/2/2. *Claytonia sibirica* (Pink Purslane) (Gwlyddyn Rhudd). Along several metres of lane bank, Russell Hill Farm, near Trostre Common, SO/37.05(S), G.Harris, 1994.
- \*153/2/3. *Lavatera thuringiaca* (Garden Tree-mallow). In rough vegetation at edge of track in Ifton Great Wood, Hardwick Plantation, ST/46.89, T.G.Evans, 1994. First record.
- +55/1/1. *Drosera rotundifolia* (Round-leaved Sundew) (Gwllithlys). Marshy area, S of Tredegar between Carn Stwpa and Highlands, SO/14.06, P.A.Smith, 1994.
- \*57/1/9b. *Viola palustris* subsp. *juressi* (Marsh Violet) (Fioled y Gors). Marshy area under trees, Cwm Merddog, SO/18.06(Y), T.G.Evans, 1991; +wet area, Pen-y-fan Pond, SO/19.00(V), P.A.Smith, 1994. First and second records.
- !62/1/6. *Sisymbrium orientale* (Eastern Rocket) (Berwr Dwyreiniol). 4-5 plants on waste ground near sludge pond, Steelworks, Newport, ST/33.84, T.G.Evans & M.Jones, 1994.
- 62/30/6. *Lepidium latifolium* (Dittander) (Berwr Gwyllt). A dense colony at top of bank of River Usk, Old Town Dock, Newport, ST/32.86, T.G.Evans, 1994. Apparently native and probable source of many small populations around Newport.
- !62/37/1b. *Coincya monensis* subsp. *recurvata* (Wallflower Cabbage) (Berwr Murwyll y Môr). Over a hundred plants in waste ground, Steelworks, ST/31.84(H), T.G.Evans & M.Jones, 1993.
- !73/1/3. *Crassula helmsii* (New Zealand Pigmyweed) (Corchwyn Seland Newydd). Edge of small pond, Craig-y-dorth, SO/48.08(Z), T.G.Evans, 1994.
- \*!75/3/1. *Spiraea salicifolia* s.s. (Bridewort) (Erwain Helygddail). Railside bank, Caldicot Pill, ST/4.8(Y), T.G.Evans, 1985. First confirmed record for the segregate.
- +75/8/122. *Rubus rubritinctus* (a bramble). Stream side, Nant-y-crochan, ST/21.94(C), T.G.Evans, 1994, det. A.Newton.
- +75/8/163. *Rubus vestitus* (a bramble). Community woodland, Blaenavon, SO/26.08(U), T.G.Evans, 1994, det. A.Newton.
- 75/8/194. *Rubus micans* (a bramble). Trackside in Hale Wood, W of Itton, ST/47.97(T), T.G. Evans, 1994, det. A.Newton. First record.
- 75/8/218. *Rubus leyanus* (a bramble). +Wet heath, The North, SO/52.06(I); trackside, Highmeadow Woods, SO/54.12(L), both T.G.Evans, 1994, det. A.Newton.
- 75/8/254. *Rubus rufescens* (a bramble). +Trackside, Great Barnett's Wood, NW of Chepstow, ST/51.94(C); +trackside in woodland, Blaenavon, SO/26.07(T), both T.G.Evans, 1994, det. A.Newton.
- +75/8/301. *Rubus scaber* (a bramble). Pathside, Fedw Wood, ST/50.98(E), T.G.Evans, 1994, det. A.Newton. Second record.
- +75/13/1. *Geum rivale* (Water Avens) (Mapgoll Glan y Dŵr). A patch 2 m<sup>2</sup> in damp woodland, Ysgyryd Fawr, SO/32.17, C.& G.Titcombe, 1994.
- 77/19/24. *Trifolium squamosum* (Sea Clover) (Meillionen y Morfa). Thousands of plants along 'sea wall' on side of River Severn, St Brides Wentlooge, ST/30.81(A) - ST/31.82 (B), C.Titcombe, 1994.
- \*!79/2/2. *Myriophyllum aquaticum* (Parrot's-feathers). Pond, Little Campston, SO/37.24, T.G.Evans, 1994. First record. Pond formerly full of *Carex vesicaria* but now cleaned out.
- \*\$81/1/2. *Lythrum hyssopifolia* (Grass-poly) (Gwyarllys Isopddail). Many plants in light soil used for potato crop, The Nurtons, Tintern, SO/535.010, A. & E.Wood, 1994. First record.
- +91/2/7. *Euphorbia serrulata* (Upright Spurge) (Llaethlys Mynwy). One plant in flower and fruit on waste ground, Tintern Cross, SO/50.00(A), T.G.Evans, 1994.
- 107/29/2. *Petroselinum segetum* (Corn Parsley) (Eilunberllys). Eight patches spaced along 50 m on E bank of Mireland Reen, Goldcliff, ST/37.82(B); about 50 plants on E bank of

Prat Reen, Magor Pill, ST/43.84, both T.G.Evans, 1994. Among the largest plants of this species seen. A good year for it.

- \*!107/38/1. *Levesticum officinale* (Lovage) (Llwfach). One plant, 1 m tall, flowered well, in gap in pavement under street light, Chepstow, ST/53.93(G), C.A.Shirley, 1994. First record.

107/43/2. *Torilis arvensis* (Spreading Hedge-parsley) (Troed-y-cyw Ymdaenol). Garden weed on bare ground, Chepstow, ST/52.93, T.G.Evans, 1994. Introduced with plants from a Wiltshire garden in 1980.

- !118/1/2. *Stachys byzantina* (Lambsear) (Clust yr Oen). Well naturalised in waste ground near hospital, Comin Coed-y-moeth, SO/15.01, P.A.Smith, 1994. Second record.

+!135/19/2. *Tragopogon porrifolius* (Salsify) (Barf yr Afr Gochlas). Eight plants in rough, wet grassland, Steelworks, Newport, ST/33.84(H), T.G.Evans & M.Jones, 1994. One of only two extant sites.

The following species of *Taraxacum* have all been identified or confirmed by C.C.Haworth or A.J.Richards unless stated otherwise, all are first records and most specimens have been deposited in NMW.

- \*135/25/3. *Taraxacum argutum* (a dandelion). Rough grass, Cwmbran, ST/28.95, T.G.Evans, 1989
- \*135/25/13. *Taraxacum glauciniforme* (a dandelion). Rocky upland, Daren, SO/29.24, A.G.Mc.Stirling, 1978, det. A.G.Mc.S.
- \*135/25/14. *Taraxacum inopinatum* (a dandelion). Steep rocky slope, Tarren yr Esgob, SO/25.30, T.G.Evans, 1985.
- \*135/25/15. *Taraxacum lacistophyllum* (a dandelion). Turf, M.O.D. Caerwent, ST/47.9, T.G.Evans, 1989.
- \*135/25/19. *Taraxacum proximum* (a dandelion). Meadow, near Skenfrith Castle, SO/45.20, T.G.Evans, 1993.
- \*135/25/39. *Taraxacum euryphyllum* (a dandelion). Meadow, Whitebrook, SO/51.07, T.G.Evans, 1984.
- \*135/25/40. *Taraxacum maculosum* (a dandelion). Llanthony, SO/28.27, A.G.Mc.Stirling, 1978, det. A.G.Mc.S.
- \*135/25/44. *Taraxacum richardsianum* (a dandelion). Roadside, Itton, ST/48.96, T.G.Evans, 1982.
- \*135/25/55. *Taraxacum bracteatum* (a dandelion). Wall, Whitebrook, SO/53.06, M.V.Marsden, 1984.
- \*135/25/56. *Taraxacum britannicum* (a dandelion). Rock ledges, Tarren-yr Esgob, SO/25.30, T.G.Evans, 1984.
- \*135/25/60. *Taraxacum duplidentifrons* (a dandelion). Whitebrook, SO/53.06, M.V.Marsden, 1985
- \*135/25/61. *Taraxacum excellens* (a dandelion). Grassland, M.O.D. Caerwent, ST/46.92, T.G.Evans, 1992.
- \*135/25/64. *Taraxacum gelertii* (a dandelion). Grass, Priory Wood, SO/35.05, T.G.Evans, 1984.
- \*135/25/66. *Taraxacum hesperium* (a dandelion). Llanvapley, SO/36.14, M.V.Marsden, 1984.
- \*135/25/69. *Taraxacum lancastriense* (a dandelion). Rocks, Daren, SO/29.24, A.G.Mc.Stirling, 1978, det. A.G.Mc.S.
- \*135/25/70. *Taraxacum landmarkii* (a dandelion). Rock ledges, Tarren-yr-Esgob, SO/25.30, T.G.Evans, 1984.
- \*135/25/78. *Taraxacum porteri* (a dandelion). Hedgebank, Michaelstone-y-Vedw, ST/25.85, T.G.Evans, 1991.
- \*135/25/80. *Taraxacum subbracteatum* (a dandelion). Meadow, Itton, ST/48.96, T.G.Evans, 1982.
- \*135/25/83. *Taraxacum unguilobum* (a dandelion). Wet heath, Pen-y-Fan, ST/19.00, T.G.Evans, 1988.

- 
- \*135/25/84. *Taraxacum atactum* (a dandelion). Grass, Graig-y-Rhacca, ST/19.89, T.G.Evans, 1990.
- \*135/25/87. *Taraxacum boekmanii* (a dandelion). Hedgebank, Wyvern Farm, ST/38.92, T.G.Evans, 1985.
- \*135/25/91. *Taraxacum kernianum* (a dandelion). Grass, Bedwas, ST/16.89, T.G.Evans, 1988.
- \*135/25/90. *Taraxacum hamiferum* (a dandelion). River bank, Dixon, SO/52.13, M.V.Marsden & V.Matthews, 1980
- \*135/25/92. *Taraxacum lamprophyllum* (a dandelion). Abergavenny, SO/32.14, M.V.Marsden, 1984.
- \*135/25/94. *Taraxacum marklundii* (a dandelion). Trackside in woodland, Barbados, Tintern, SO/51.01, T.G.Evans, 1992
- \*135/25/99. *Taraxacum quadrans* (a dandelion). W of Noddfa, SO/50.08, M.Chorley, 1980, det. M.C.
- \*135/25/103. *Taraxacum acroglossum* (a dandelion). Roadside, Llanhennock, ST/35.92, T.G.Evans, 1987.
- \*135/25/105. *Taraxacum acutifrons* (a dandelion). Grass, Waun-y-Pound, SO/15.10, T.G.Evans, 1993.
- \*135/25/106. *Taraxacum aequilobum* (a dandelion). Hedgebank, Llanellen, SO/30.10, R.Fraser, 1987.
- \*135/25/107. *Taraxacum aequisectum* (a dandelion). Wall, Whitebrook, SO/53.06, M.V.Marsden, 1984.
- \*135/25/108. *Taraxacum alatum* (a dandelion). West meadow, Mathern, ST/51.91, T.G.Evans, 1985.
- \*135/25/111. *Taraxacum ancistrolobum* (a dandelion). Bank of River Usk, Llancayo, SO/35.02, T.G.Evans, 1984.
- \*135/25/113. *Taraxacum angustisquameum* (a dandelion). Woodland track side, Barbados, Tintern, SO/51.01, T.G.Evans, 1992
- \*135/25/115. *Taraxacum aurosulum* (a dandelion). Ty Mawr Convent, SO/50.05, M.Chorley, 1980, det. M.C.
- \*135/25/119. *Taraxacum chrysophaenum* (a dandelion). Meadow, Crossway Green, Chepstow, ST/52.94, T.G.Evans, 1994.
- \*135/25/121. *Taraxacum cordatum* (a dandelion). Hedgebank, Oaks, Park Seymour, ST/40.92, T.G.Evans, 1988.
- \*135/25/122. *Taraxacum corynodes* (a dandelion). Meadow, Llandenny - Llansoy, SO/43.03, T.G.Evans, 1982.
- \*135/25/123. *Taraxacum croceiflorum* (a dandelion). Roadside, Parkwall, ST/50.90, T.G.Evans, 1982.
- \*135/25/124. *Taraxacum curtifrons* (a dandelion). Roadside bank, NE Pen-y-Clawdd Church, SO/45.07, T.G.Evans, 1994.
- \*135/25/129. *Taraxacum dilaceratum* (a dandelion). Wet meadow, Llandenny, SO/42.04, T.G.Evans, 1985.
- \*135/25/130. *Taraxacum dilatatum* (a dandelion). Garden weed, Mt Pleasant Hospital, Chepstow, ST/52.93, T.G.Evans, 1992.
- \*135/25/131. *Taraxacum ekmanii* (a dandelion). Monmouth, SO/52.13, M.V.Marsden, 1980.
- \*135/25/132. *Taraxacum exacutum* (a dandelion). Lawn, Chepstow Health Centre, ST/53.93, T.G.Evans, 1992.
- \*135/25/133. *Taraxacum expallidiforme* (a dandelion). Improved meadow, Brockwells, Caldicot, ST/46.89, T.G.Evans, 1991.
- \*135/25/136. *Taraxacum fagerstroemii* (a dandelion). Roadside bank, S of Mynyddislwyn, ST/19.92, T.G.Evans, 1994.
- \*135/25/137. *Taraxacum fasciatum* (a dandelion). Rough grassland, Mathern, ST/51.91, T.G.Evans, 1985
-

- 
- \*135/25/138. *Taraxacum hemicyclum* (a dandelion). Garden, Chepstow, ST/52.93, T.G.Evans & C.C.Haworth, 1984.
- \*135/25/141. *Taraxacum huielpersianum* (a dandelion). Meadow, Llandenny, SO/42.04, T.G.Evans, 1985.
- \*135/25/143. *Taraxacum insigne* (a dandelion). Track, Whitebrook, SO/53.06, M.V.Marsden, 1985.
- \*135/25/146. *Taraxacum lacerifolium* (a dandelion). Bank of River Usk, Llancayo, SO/36.02, T.G.Evans, 1984.
- \*135/25/149. *Taraxacum laeticolor* (a dandelion). Wall, Llanover, SO/31.07, T.G.Evans, 1984.
- \*135/25/150. *Taraxacum laticordatum* (a dandelion). Croes Hywel, SO/33.14, M.V.Marsden, 1984.
- \*135/25/151. *Taraxacum latisectum* (a dandelion). Meadow, Llandenny, SO/42.04, T.G.Evans, 1985.
- \*135/25/152. *Taraxacum latissimum* (a dandelion). Road verge, Lydart, SO/49.08, T.G.Evans, 1993.
- \*135/25/155. *Taraxacum leucopodium* (a dandelion). Short turf, Sudbrook, ST/50.87, M.V.Marsden, 1994.
- \*135/25/156. *Taraxacum subexpallidum* (a dandelion), Bigsweir Bridge, SO/53.05, M.V.Marsden, 1984.
- \*135/25/165. *Taraxacum melanthoides* (a dandelion). Whitebrook, SO/53.06, M.V.Marsden, 1994.
- \*135/25/168. *Taraxacum multicolorans* (a dandelion). Meadow, Crossway Green, Chepstow, ST/52.94, T.G.Evans, 1994.
- \*135/25/169. *Taraxacum necessarium* (a dandelion). Grassland, near Priory Wood, SO/35.05, T.G.Evans, 1984.
- \*135/25/172. *Taraxacum oblongatum* (a dandelion). Road verge, Bigsweir, SO/53.05, M.V.Marsden, 1984.
- \*135/25/175. *Taraxacum ochrochlorum* (a dandelion). Meadow of River Monnow, near Skenfrith Castle, SO/45.20, T.G.Evans, 1993.
- \*135/25/179. *Taraxacum pallidipes* (a dandelion). Roadside, Gockett Inn, SO/49.08, J.Harper, 1990.
- \*135/25/180. *Taraxacum pannucium* (a dandelion). Roadside, Chepstow, ST/52.93, T.G.Evans, 1982.
- \*135/25/181. *Taraxacum pannulatifforme* (a dandelion). Hedgebank, Cwm, ST/46.92, T.G.Evans, 1982.
- \*135/25/182. *Taraxacum pannulatum* (a dandelion). Hedgebank, Parc Seymour, ST/40.92, T.G.Evans, 1982.
- \*135/25/183. *Taraxacum pectinatiforme* (a dandelion). Meadow of River Monnow, near Skenfrith Castle, SO/45.20, T.G.Evans, 1993.
- \*135/25/184. *Taraxacum piceatum* (a dandelion). Hedgebank, Parc Seymour, ST/40.92, T.G.Evans, 1982.
- \*135/25/185. *Taraxacum planum* (a dandelion). Roadside bank, NE of Pen-y-clawdd, SO/45.07, T.G.Evans, 1994.
- \*135/25/186. *Taraxacum polyodon* (a dandelion). Verge, Pant-y-goitre Bridge, ST/34.08(P), T.G.Evans, 1985.
- \*135/25/188. *Taraxacum procerisquameum* (a dandelion). Grassland, Sudbrook Camp, ST/50.87, T.G.Evans, 1982.
- \*135/25/194. *Taraxacum rhamphodes* (a dandelion). Roadside, Mynydd-alltyr-fach, ST/42.92, T.G.Evans, 1987.
- \*135/25/197. *Taraxacum sellandii* (a dandelion). Roadside, Chepstow, ST/52.93, T.G.Evans, 1982.
- \*135/25/199. *Taraxacum sinuatum* (a dandelion). Whitebrook, SO/53.06, C.C.Haworth & R.Pankhurst, 1984.
-

- \*135/25/202. *Taraxacum stereodes* (a dandelion). Wall, Whitebrook, SO/53.06, M.V.Marsden, 1989.
- \*135/25/208. *Taraxacum sublongisquameum* (a dandelion). Woodland path, Orles Wood, Lydart, SO/50.09, J.Harper, 1990.
- \*135/25/209. *Taraxacum subpratensis* (a dandelion). Bigsweir, SO/53.05, M.V.Marsden, 1988.
- \*135/25/214. *Taraxacum trilobatum* (a dandelion). Verge, Chepstow, ST/52.93, T.G.Evans, 1982.
- \*135/25/216. *Taraxacum undulatiflorum* (a dandelion). Roadside, Gaerllwyd, ST/45.96, T.G.Evans, 1984.
- \*135/25/217. *Taraxacum undulatum* (a dandelion). Road verge, Llanvapley, SO/38.14, M.V.Marsden, 1984.
- \*135/25/anc'. *Taraxacum 'anceps'* (an undescribed dandelion). Bank of River Wye, Dixon, SO/52.13, M.V.Marsden, 1980.
- \*135/25/bri. *Taraxacum 'British atactum'* (an undescribed dandelion). Roadside, Mounton Church, ST/51.92, T.G.Evans, 1992.
- \*135/25/edm. *Taraxacum edmonsonianum* H.Øllg. (a dandelion). Roadside, NE Pen-y-clawdd Church, SO/45.07, T.G.Evans, 1994.
- \*135/25/nig. *Taraxacum nigridentatum* T.Edmonson. Meadow, Mounton Church, ST/51.92, T.G.Evans, 1992.
- \*135/25/non'. *Taraxacum 'non-reverum'* (an undescribed dandelion). Meadow by River Monnow, near Skenfrith Castle, SO/45.20, T.G.Evans, 1993.
- +153/12/7d. *Festuca rubra* subsp. *commutata* (Chewing's Fescue) (Peisgwelld Culddail). Wasteland, Steelworks, Newport, ST/33.84, T.G.Evans & M.Jones, 1994.
- 153/51/2. *Bromopsis benekenii* (Lesser Hairy-brome) (Pawrwellt Blewog Lleiaf). One plant on shady pathside between Angiddy Brook and road, Tintern Cross, SO/51.00(A), T.G.Evans, 1994. A rare plant in the VC.
- !153/52/5. *Anisantha madritensis* (Compact Brome) (Pawrwellt Dwysedig). Several plants on roadside, Tintern Cross, SO/50.00, T.G.Evans, 1994. A very local plant in the VC.
- +158/2/1. *Narthecium ossifragum* (Bog Asphodel) (Llafn y Bladur). Marshy area, S of Tredegar between Carn Stwpa and Highlands, SO/14.06, P.A.Smith, 1994.
- 162/3/1. *Epipactis palustris* (Marsh Helleborine) (Caldrist y Gors). Over 10,000 plants on margins of sludge beds, Steelworks, Newport, ST/33.84, M.Jones & T.G.Evans, 1993 & '94. With *Ophrys apifera*, *Dactylorhiza praetermissa*, *Chenopodium glaucum*, *Typha × glauca*.
- +162/14/1. *Anacamptis pyramidalis* (Pyramidal Orchid) (Tegeirian Bera). Over 200 plants in coastal marsh, Steelworks, ST/33.84(H), M.Jones *et al.*, 1994. Best of only 2 extant populations, probably doomed by site development.
- +162/18/1×4. *Dactylorhiza × grandis* (*D. fuchsii* × *D. praetermissa*) (a hybrid marsh-orchid). A number scattered over rough grassy meadow, Steelworks, Newport, ST/33.84, T.G.Evans & M.Jones, 1993 & '94. *D. fuchsii* & *D. praetermissa* also present.

## GLAMORGAN, v.c. 41 (comm. P.S.Jones &amp; Q.O.N.Kay)

- +17/3/2×3. *Dryopteris × complexa* (*D. filix-mas* × *D. affinis*) (a hybrid Male-fern). Fern/*Rubus* dominated gully, above Headland road, W side of Kilvey Hill, Swansea, SS/666.938, R.D.Pryce & G.Hutchinson, 1994.
- +528/6/1. *Aconitum napellus* (Monk's-hood) (Cwccwll y Mynach). Bank of Burry Pill in Calves Wood, Cheriton, Gower, SS/455.928, S.Howes, 1994.
- 28/13/20. *Ranunculus tripartitus* (Three-lobed Crowfoot) (Crafanc Trillob). Trampled mud in shallow pool on NE side of Pitton Cross Moor, Gower, SS/434.880, Q.O.N.Kay & R.Wright, 1994. First certain Gower record during 1990s and possibly the only extant site in the VC.

- +46/9/1. *Moenchia erecta* (Upright Chickweed) (Cornwlyddyn Syth). About 120 plants on leached dune grassland, Porthcawl, SS/7.7 & SS/8.7, P.S.Jones, 1994. Second record.
- +51/1/16. *Hypericum elodes* (Marsh St John's-wort) (Eurinllys y Gors). Cefn Hirgoed, SS/91.82, L.Peddle, 1994.
- +52/1/2. *Tilia cordata* (Small-leaved Lime) (Pisgwydden Deilen Fach). 16 large trees on Carboniferous limestone outcrop, Michaelstone Le Pit gorge, near Dinas Powys, SO/146.720, M.Hampton, 1994.
- +62/26/1. *Hornungia petraea* (Hutchinsia) (Beryn Creigiog). 50-100 plants on S facing semi-fixed sand dune, Kenfig NNR, SS/802.821, P.S.Jones, 1994.
- +!62/30/8. *Lepidium draba* (Hoary Cress) (Pupurlys Llwyd). Disused quayside, Port Talbot Docks, SS/768.887, P.S.Jones, 1994.
- +69/4/3. *Lysimachia vulgaris* (Yellow Loosestrife) (Trewynyn). Many plants on roadside near Bryn Menyn, SS/90.84, L.Peddle, 1984.
- +75/28/24. *Sorbus torminalis* (Wild Service-tree) (Cerddinen Folwst). Ten small trees on Triassic Red Marl cliff, Barry Island, ST/121.665, M.Hampton, 1994. One of only 3 extant sites.
- +!75/32/13. *Cotoneaster lacteus* (Late Cotoneaster). One plant in copious fruit on top of S facing low cliff, Rhoose Quarry, ST/063.659, G.Hutchinson, 1994. Second record for Wales.
- !75/32/37. *Cotoneaster dielsianus* (Diels' Cotoneaster). Frequent seedlings over N half of Rhoose Quarry, ST/055.660, G.Hutchinson, 1994. The main Cotoneaster with *C. horizontalis*.
- +!75/32/40. *Cotoneaster sternianus* (Stearn's Cotoneaster). One plant on floor of Rhoose Quarry, ST/057.660, G.Hutchinson, 1994. Second record.
- +77/15/8. *Lathyrus sylvestris* (Narrow-leaved Everlasting-pea) (Ytbyesen Barhaus Gulddail). Abundant over a large area near railway line, Pen-y-cae, SS/90.82, L.Peddle, 1994.
- 77/18/5. *Medicago arabica* (Spotted Medick) (Maglys Amrywedd). Extensive patch with 1000's of plants on roadside verge, Porthcawl, SS/828.777, P.S.Jones, 1994.
- 77/19/20. *Trifolium striatum* (Knotted Clover) (Meillionen Rychog). At least 5 plants on Carboniferous Limestone outcrop, Pant Mari Flanders, Heol-y-Mynydd, SS/883.755, P.S.Jones & S.Thomas, 1994; about 5 plants on leached sand dune hollow, next to *Lolium multiflorum* ley, Sker farm, near Porthcawl, SS/803.793, P.S.Jones, C.Hurford & A.Jones, 1994; +about 3 plants in pathside neat to calcicolous grassland, Fog Signal enclosure, Flatholm Island, ST/223.649, J.Woodman, G.M.Barter & P.S.Jones, 1994.
- +103/1/7. *Geranium pratense* (Meadow Crane's-bill) (Pig yr Aran y Weirglodd). 10-15 plants at roadside near Brynmenyn, SS/90.84, L.Peddle, 1994.
- +107/34/2. *Carum verticillatum* (Whorled Caraway) (Carwas Troelllog). Wet *Molinia* meadow, Gethin Pond, near Troedyrhiw, S of Merthyr Tydfil, SO/056.033, M.E.Gillham, 1994.
- +116/2/1. *Echium vulgare* (Viper's-bugloss) (Glas y Graean). Abandoned waste tip near Aberbaiden Farm, 2km NE Kenfig Hill, SS/85.84, L.Peddle, 1994.
- +!118/4/1c. *Lamiastrum galeobdolon* subsp. *argentatum* (Variegated Yellow Archangel) (Marddanhadlen Felen Arianddail). Spreading garden escape in base of hedgebank, NE of Pennard Farm above Pwll Du Bay, SS/571.871, G.Hutchinson, 1994.
- +118/10/2. *Scutellaria galericulata* (Skullcap) (Cwcwll). Side of disused railway line, Bryncethin, SS/92.84, L.Peddle, 1994.
- +130/6/3. *Galium uliginosum* (Fen Bedstraw) (Briwydden y Ffig). Abundant over 1.5 ha of calcareous mire, Whitewells Farm, ST/072.767, J.Woodman, 1994.
- +130/8/1. *Rubia peregina* (Wild Madder) (Cochwraidd Gwyllt). Two small plants under *Fagus sylvatica* at edge of Carboniferous Limestone cliff, Castell Coch, ST/129.826, G.M.Barter, 1995.
- !135/81/4. *Bidens frondosa* (Beggarticks) (Llau'r Crwydryn). Edge of pond associated with old colliery workings, c.300 m N of Pen-y-graig, E side of Kilvey Hill, Swansea, SS/681.941, G.Hutchinson & R.D.Pryce, 1994.



- 152/1/3. *Eriophorum gracile* (Slender Cottongrass) (Plu'r Gweunydd Eiddil). Disturbed ponded ground associated with old colliery workings, c.300 m N of Pen-y-graig, E side of Kilvey Hill, Swansea, SS/681.941, G.Hutchinson & R.D.Pryce, 1994. Third record.
- +152/3/5. *Eleocharis quinqueflora* (Few-flowered Spike-rush) (Sbigfrwynen Goch). Sandy seepage, Ffynnon Wen Rocks, Rest Bay, near Porthcawl, SS/799.787, P.S.Jones, 1994, conf. G.Hutchinson.
- +152/11/1. *Cyperus longus* (Galingale) (Ysnoden Fair). Two clumps on SW bank of Broad Pool, Cefn Bryn Common, Gower, SS/509.910, G.Hutchinson, 1993. First Gower record. Probably introduced but not associated with other introduced species in immediate area.
- +152/16/22. *Carex curta* (White Sedge) (Hesgen Benwen). Acidic mire with *Osmunda*, *Sphagnum* and *Eriophorum* spp., Fairwood Common, S of A4118, SS/581.926, R.John & C.R.Hipkin, 1994. First Gower record.
- +152/16/54. *Carex montana* (Soft-leaved Sedge) (Hesgen Feddal). Six clumps in heathland with *Ulex gallii* & *Agrostis curvata*, Stormy Down, SS/847.808, J.Woodman, 1994.
- 162/3/1. *Epipactis palustris* (Marsh Helleborine) (Caldrist y Gors). About 100 spikes in 2 colonies in calcareous mire, Whitewells Farm, ST/072.767, J.Woodman, 1994. Only extant inland site in VC.
- +162/3/4. *Epipactis helleborine* (Broad-leaved Helleborine) (Caldrist Llydanddail). About 36 plants under trees in garden, Colwinston, SS/94.75, A.B.Pinkard, 1994. Introduced c.10 years ago, now well naturalised and spreading.
- 162/23/3. *Ophrys apifera* (Bee Orchid) (Tegeirian y Gwenyn). Waste ground, Barry Docks, ST/120.671, A.McCormack, 1994.

BRECON, v.c. 42 (comm. M.Porter)

- +7/1/1. *Cryptogramma crispa* (Parsley Fern) (Rhedynen Bersli). Rocky outcrops, Nant Irfon NNR, SN/842.538, A.Ferguson, 1994.
- +3/1/1. *Isoetes lacustris* (Quillwort) (Gwair Merllyn). Edge of Dolymynach reservoir, 6.5 km W of Llanwrthwl, SN/907.617, C.Mosscroft, 1994.
- 46/10/3. *Sagina subulata* (Heath Pearlwort) (Corwlyddyn Mynawydaidd). Between Tirabad and Cefngorwydd, SN/8.4, R.G.Woods, 1994. Second record.
- +46/17/4. *Spergularia rubra* (Sand Spurrey) (Troellys Coch). Rocky outcrops, Little Hill, 3.2 km NW of Erwood, SO/072.445, M.Porter, 1994.
- \*50/1/1. *Elatine hexandra* (Six-stamened Waterwort) (Gwybybyr Chwe Brigerog). Margin of Dolymynach reservoir (emptied for repair), 8 km W of Llanwrthwl, SN/907.617, C.Mosscroft, 1994. First record.
- \*562/23/5. *Cochlearia danica* (Danish Scurvygrass) (Llwylys Denmarc). Roadside about 2.5 km NW of Erwood, SO/075.444, R.G.Woods, 1994. First record.
- \*175/8/55. *Rubus laciniatus* (Cut-leaved Blackberry). Woodland, Llangynidr, SO/164.200, M.Porter & L.Kellaway, 1994. First record.
- +75/8/ari. *Rubus ariconiensis* A.Newton & M.Porter (a bramble). Hedge, near Trecastle, SN/878.294, M.Porter, 1994.
- +75/20/2. *Aphanes inexpectata* (Slender Parsley-piert) (Troed y Dryw Fain). Rocky outcrops, near Twyn y Beddau, edge of Black Mountains, SO/242.385, M.Porter, 1994.
- +84/1/5. *Epilobium tetragonum* (Square-stalked Willowherb) (Helyglys Pedronglog). Waste ground by car park, Crickhowell, SO/220.193, M.Porter, 1994.
- +135/5/4. *Carduus nutans* (Musk Thistle) (Ysgallen Ogwydd). Rocky outcrop along track, SN/897.616, M. Porter, 1994.
- +135/11/3. *Centaurea cyanus* (Cornflower) (Penlas yr Yd). Road verge after road widening, near Glangrwyne, SO/237.164, M.Porter, 1994.
- !135/73/1. *Calendula officinalis* (Pot Marigold) (Melyn Mair). Road verge after road widening, near Glangrwyne, SO/237.164, M.Porter, 1994.

- +1148/2/4. *Lemna minuta* (Least Duckweed) (Corlinad). Garden pond, Cathedine, SO/146.231, M.Porter, 1994. Second record.
- \*153/35/ele. *Aira elegantissima* (a hair-grass). Weed in plant pot in greenhouse, Bronllys Castle, SO/149.347, R.G.Woods, 1986, det. T.B.Ryves, 1995. First record. Originally identified as *Apera spica-venti*.
- +158/7/1. *Colchicum autumnale* (Meadow Saffron) (Saffrwm y Gweunydd). Pasture, edge of Sugar Loaf, near Llangenny, SO/253.194, R.G.Woods, 1994.

RADNOR, v.c. 43 (comm. D.R.Humphreys)

- +16/4/1. *Gymnocarpium dryopteris* (Oak Fern) (Llawredynen y Derw). Steep wooded bank, North Wood, near Presteigne, SO/291.636, D.R.Humphreys, 1994.
- +46/9/1. *Moenchia erecta* (Upright Chickweed) (Cornwlyddyn Syth). Rocky track bank, Cascob, SO/234.669, D.R.Humphreys, 1994.
- \*62/22/2. *Erophila glabrescens* (Glabrous Whitlowgrass) (Bystwn Llyfn). Rocky track banks, Cascob, SO/234.669, D.R.Humphreys, confirmed R.G.Woods, 1994. First record of segregate.
- \*175/3/1. *Spiraea salicifolia* s.s. (Bridewort) (Erwain Helygddail). Llandrindod, SO/0.6, D.A.Jones, 1892. First record.

CARMARTHEN, v.c. 44 (comm. R.D.Pryce)

- +4/1/1. *Equisetum hyemale* (Rough Horsetail) (Marchrawn y Gaeaf). Top of wide stream bank, Carwe playing fields, SN/469.070, J.N.Davies, 1994, det. R.D.Pryce.
- +5/2/1. *Botrychium lunaria* (Moonwort) (Lloerlys). Three plants by old building in grassland, Nant-y-mwyn leadmine, SN/787.445, D.Davies, 1994. With *Calluna vulgaris*, *Nardus stricta*, *Potentilla erecta*, *Linum catharticum*, etc.
- 9/2/1gam. *Trichomanes speciosum* (gametophyte) (Killarney Fern) (Rhedynen Wrychog). Abundant in dry rock cavity under overhang on NW facing slope in wood, by track along bottom of Allt Penrhyn wood, Forge-cych, SN/254.413, A.O.Chater, 1994. First record of gametophyte, sporophyte unknown in the VC.
- +27/1/1. *Ceratophyllum demersum* (Rigid Hornwort) (Cyrnddail). Garden pond, Garnant, SN/693.134, J.N.Davies, 1994, det. G.Hutchinson.
- +28/13/11. *Ranunculus sceleratus* (Celery-leaved Buttercup) (Crafanc yr Eryr). Weed in garden tub, Wernddu Road, Ammanford, SN/6.1, A.M.Pell, 1994.
- 28/17/3. *Thalictrum flavum* (Common Meadow-rue) (Arianllys). Roadside hedge, S of Newcastle Emlyn, c.150 m S of Rhyddgoed Fawr entrance, SN/324.390, R.D.Pryce, 1994.
- +40/3/1. *Carpinus betulus* (Hornbeam) (Oestrwydden). Iscoed, Ferryside, SN/3.1(V), H.J.Killick, 1994.
- +43/3/2. *Atriplex prostrata* (Spear-leaved Orache) (Llygwyn Tryfal). Wall of slurry yard, Manoravon Farm, Llandeilo, SN/652.237, A.O.Chater, G.Hutchinson & R.D.Pryce, 1994.
- +46/10/3. *Sagina subulata* (Heath Pearlwort) (Corwlyddyn Mynawydaidd). Blaenwaun area, SN/2.2(I), G.M.Kay & J.Gibson, 1994.
- +146/25/7. *Dianthus armeria* (Deptford Pink) (Penigan y Porfeydd). Over 200 plants on sheltered trackway and adjacent hedgebank, C. 150 m W of Bryndias Farmstead (ruin), Trimsaran, SN/434.034, J. & K.Crowden, 1994. Second record.
- +51/1/16. *Hypericum elodes* (Marsh St John's-wort) (Eurinllys y Gors). +Wet field, c.300 m N of Clyn-coch, near Bryn Iwan, SN/304.314, J.A.Green & P.Goodhind; +flush with *Molinia caerulea*, *Carex laevigata*, etc., Ffrwd Farm, Pembrey, SN/429.029, R.D.Pryce, both 1994.
- \*157/1/10. *Viola cornuta* (Horned Pansy) (Fioled Gorniog). Three plants in flower on roadside hedgebank about 100 m from nearest house, Blaendyfnant near Llanfrynach, SN/236.294, G.Hutchinson & R.D.Pryce, 1994. First county and third Welsh record.

- +61/2/9x10. *Salix* × *sericans* (*S. viminalis* × *S. caprea*) (a hybrid willow). Roadside hedge, 0.5 km N of Bumper Farm, near Cwmfelin-mynach, SN/236.247, J.A.Green, 1994., det. G.Hutchinson.
- \*61/2/10x12. *Salix* × *capreola* (*S. caprea* × *S. aurita*) (a hybrid willow). Hill slope, Glanrhyd Farm, Maudsland, SN/334.321, R.D.Pryce, 1992, det. R.D. Meikle. First confirmed record.
- +61/2/16. *Salix repens* (Creeping Willow) (Corhelygen). Damp turf, Llyn Brianne Dam, SN/792.482; Craig Rhosan area, SN/74.42, both J.& M.Iliff, 1994.
- +62/12/3. *Rorippa islandica* (Northern Yellow-cress) (Berwr Melyn y Gogledd). Oxbow of Afon Tywi, Pentre Dafis near Dryslwyn, SN/568.203, A.O.Chater, G.Hutchinson & R.D.Pryce, 1994.
- 62/12/4. *Rorippa palustris* (Marsh Yellow-cress) (Berwr Melyn y Gors). One plant only, in marshy hollow in sheep-grazed pasture, behind factory 200 m NW of Llanwrda railway station, SN/714.311, A.O.Chater, 1993.
- +62/31/1. *Coronopus squamatus* (Swine-cress) (Olbrain). Blaenwaun area, SN/2.2(I), G.M.Kay & J.Gibson, 1994.
- \*!62/Eru/ves. *Eruca vesicaria* subsp. *sativa* (Garden Rocket) (Roced yr Ardd). Garden, below bird table, Llwynhendy, SS/537.993, I.K.Morgan, 1993. First record.
- +65/13/1. *Vaccinium oxycoccus* (Cranberry) (Llygaeron). Degraded burnt moorland, near Triol Bach, Hermon, SN/343.317, G.Hutchinson & R.D.Pryce, 1994.
- +75/8/23. *Rubus nessensis* (a bramble). Woodland ride edge, Troserch Wood, Llangennech, SN/546.042, BSBI *Rubus* Meeting, 1994, det. A.Newton.
- \*75/8/55. *Rubus laciniatus* (Cut-leaved Blackberry). Base of wall, Llanelli, SN/512.001, I.K.Morgan, 1994, det. G.Hutchinson. First record.
- +75/8/89. *Rubus altiarcuratus* (a bramble). Forestry plantation margin, Coed Cochion Quarry, Llangynog, SN/332.147, BSBI *Rubus* Meeting, 1994, det. A.Newton. Second record.
- +75/8/93. *Rubus cardiophyllus* (a bramble). Edge of waste ground adjacent to GPO sorting office, Carmarthen, SN/412.195, BSBI *Rubus* Meeting, 1994, det. A.Newton. Second record.
- \*75/8/101. *Rubus dumnoniensis* (a bramble). Hedge, Pentrefoelas, SH/82.57, G.Battershall, 1995, det. A.Newton. First record.
- +75/8/106. *Rubus incurvatus* (a bramble). Hedge, Talycafn, SH/78.68, G.Battershall, 1995, det. A.Newton.
- \*75/8/132. *Rubus spregelii* (a bramble). Edge of Forestry Plantation picnic site, near Cenarth, SN/262.408, BSBI *Rubus* Meeting, 1994, det. A.Newton. First record.
- \*75/8/144. *Rubus adscitus* (a bramble). Field hedge, Carmarthen, SN/412.212; Roadside hedge, Cwm Cathan, Garnswllt, SN/628.099, both BSBI *Rubus* Meeting, 1994, det. A.Newton. First & second records.
- \*75/8/193. *Rubus melanoderms* (a bramble). Roadside hedge, Cwm Cathan, Garnswllt, SN/628.099; +roadside hedgerow, near Llanedi, SN/602.090; both BSBI *Rubus* Meeting, 1994, det. A.Newton. First & second records.
- +75/8/234. *Rubus flexuosus* (a bramble). Roadside hedgerow, entrance to Erw-wastad Farm, Llanedi, SN/602.090, BSBI *Rubus* Meeting, 1994, det. A.Newton. Second record.
- \*75/8/ari. *Rubus ariconiensis* A.Newton & M.Porter (a bramble). Edge of Forestry Plantation picnic site, near Cenarth, SN/262.408, BSBI *Rubus* Meeting, 1994, det. A.Newton. First record.
- 75/9/13b. *Potentilla erecta* subsp. *strictissima* (Tormentil) (Tresgl y Moch). +Roadside hedgebank, S of Lluest Farm, Upper Brynamman, SN/705.143; +edge of forest ride, Crychan Forest, SN/842.398, both I.K.Morgan, 1994, det. G.Hutchinson.
- +75/19/14. *Alchemilla glabra* (Smooth Lady's-mantle) (Mantell Fair y Nant). Near Bryn Iwan, SN/3.3, J.A.Green & P.Goodhind, 1994.

- 75/21/15. *Rosa tomentosa* (Harsh Downy-rose) (Rhosyn Lledwlanog). Large bush by path by riverbank at S end of footbridge over Afon Teifi, Forge-cych, SN/245.415, A.O.Chater, 1994.
- +175/32/10(rep). *Cotoneaster salicifolius* 'repens' (Willow-leaved Cotoneaster). Roadside bank, Penyfai lane, Llanelli, SN/497.016, I.K.Morgan, 1993, det. J. Fryer. First Welsh record for cultivar.
- \*175/32/23. *Cotoneaster atropurpureus* (Purple-flowered Cotoneaster). S side of road up hill, The Graig, Burry Port, SN/444.016, G.Hutchinson, 1991, det J. Fryer. First VC & Welsh record.
- !75/32/35. *Cotoneaster rehderi* (Bullate Cotoneaster). Hedge, Capel Hendre, SN/594.113, A.M.Pell, 1994, det. G.Hutchinson. With *Ilex aquifolium*, *Fraxinus excelsior*, *Corylus avellana*, *Salix cinerea* & *Crataegus monogyna*.
- +77/16/4. *Ononis repens* (Common Restharrow) (Tagaradr). Blaenwaun area, SN/2.2(I), G.M.Easy & J.Gibson, 1994.
- +77/19/13. *Trifolium micranthum* (Slender Trefoil) (Meillionen Felen Eiddil). Castell Draenog area, SN/2.2(A), H.J.Killick & J.Bevan, 1994.
- +84/6/1x2. *Circaea x intermedia* (Upland Enchanter's-nightshade) (Gwynlys Mynydd-dir). Cwmerchon Farm, Llanwrda, SN/698.343, L.Midgley, 1994.
- +92/2/1. *Frangula alnus* (Alder Buckthorn) (Breuwydden). One bush, edge of Forestry Plantation, Cwm Rhaidadr, SN/759.435, J.&M.Iliff, 1994.
- !103/1/23. *Geranium phaeum* (Dusky Crane's-bill) (Gweddw Galarus). Outside abandoned garden, Cribyn Organ, SN/361.293; +roadside verge, near Llwyn Howel, Whitemill, SN/474.226, both M.R.Herbert, 1994.
- +107/25/1. *Conium maculatum* (Hemlock) (Cegiden), Nr Bryn Iwan, SN/3.3(A), J.A.Green & P.Goodhind, 1994.
- +107/28/4. *Apium inundatum* (Lesser Marshwort) (Dyfrforonen Leiaf). One plant in oxbow pond, NE of Cilsan Bridge, SN/590.214, A.O.Chater, G.Hutchinson & R.D.Pryce, 1994.
- +118/1/5x6. *Stachys x ambigua* (*S. sylvatica* x *S. palustris*) (Hybrid Woundwort) (Briwllys Croesryw). Wet ditch, Ffynnon-wen, near Bryn Iwan, SN/309.307, J.A.Green & P.Goodhind, 1994.
- +118/8/1. *Melittis melissophyllum* (Bastard Balm) (Gwenynog). Shaded lineside bank, Cwm Cych, SN/2.3, I.K.Morgan, 1993. Rediscovery of population last seen in 1948.
- \*118/1/7/1. *Satureja montana* (Winter Savory) (Safri Fach). About 35 plants, well naturalised along street side, Bryn Avenue, Burry Port, SN/453.009, I.K.Morgan, 1993. First confirmed record.
- +124/16/20. *Veronica polita* (Grey Field-speedwell) (Rhwyddlwyn Llwyd). Weed on newly formed roadside hedgebank planted with hawthorn whips, immediately E of bridge over Afon Tywi, Llangadog, SN/696.286, A.O.Chater, G.Hutchinson & R.D.Pryce, 1994. With *Veronica persica*, etc.
- +130/3/1. *Sherardia arvensis* (Field Madder) (Mandon Las yr Yd). Llyn Brianne Dam, SN/79.48, J.&M.Iliff, 1994.
- The following species of *Hieracium* have all been identified by J.Bevan from specimens in NMW and only brief details of locality, etc., are given
- 135/28/1. *Hieracium sabaudum* (a hawkweed). Disused mineral line, Cwmheidre Colliery, SN/49.08, G.Hutchinson, 1992; disturbed soil, SSE of Rhydcymerau, SN/581.379, G.Hutchinson & J.Bevan, 1993; roadside verge, 2.1 km SW of Cilycwm, SN/73.38, J.Iliff, 1984; waterfall on Afon Merchon, 2.7 km NW of Cilycwm; SN73.41, J.Iliff, 1984; forestry road, NW of Bwlch-y-rhiw, SN/71.46, J.Iliff, 1994.
- 135/28/4. *Hieracium salticola* (a hawkweed). +Disused mineral line, Cynheidre Colliery, SN/49.08, G.Hutchinson, 1992; single roadside plant, Machynys, Llanelli, SS/50.98, G.Hutchinson & I.K.Morgan, 1993.
- +135/28/5. *Hieracium vagum* (a hawkweed). Disused railway, Pantyffynnon, SN/62.11, G.Hutchinson, R.D.Pryce & I.K.Morgan, 1993. Second record.

- +135/28/6b. *Hieracium umbellatum* subsp. *bichlorophyllum* (Narrow-leaved Hawkweed) (Heboglys Culddail). Rocks in Afon Teifi, W of Cenarth Bridge, SN/26.41, G.Hutchinson, 1994.
- 135/28/6a. *Hieracium umbellatum* subsp. *umbellatum* (Narrow-leaved Hawkweed) (Heboglys Culddail). Roadside grass verge, N of Llanwinio Common, SN/23.30; mown roadside grass, 1.3 km ESE of Crugybar, SN/67.37, both J.Illiff, 1984.
- 135/28/67. *Hieracium subamplifolium* (a hawkweed). +Wall top, Tanerdy, Carmarthen, SN/42.20, G.Hutchinson, 1994; trackside, Llandybie railway station, SN/62.15, G.Hutchinson, 1993; +coal-tip waste, Cynheidre Colliery, SN/49.07, G.Hutchinson & R.D.Pryce, 1994; +old railway sidings, Carmarthen, SN/41.19, G.Hutchinson, 1993.
- 135/28/69. *Hieracium acuminatum* (a hawkweed). Grass verge, Cynheidre Colliery, SN/49.07, G.Hutchinson, 1992; wall top, Tanerdy, Carmarthen, SN/42.20, G.Hutchinson, 1994; St Clears railway bridge, SN/27.17, R.D.Pryce, 1993; +hedgebank, 1.3 km N of Gellywen, SN/27.25, G.Hutchinson *et al.*, 1994; +railway line, N of Penclacwydd farm, Llanelli, SS/53.98, I.K.Morgan, 1994; Derwydd Road railway station (disused), SN/61.17, I.K.Morgan, 1993.
- 135/28/70. *Hieracium diaphanoides* (a hawkweed) +Old wall, Llanelli, SS/50.99, I.K.Morgan, 1993; bank of Afon Sawdde, Pontarllechau, SN/72.24, R.D.Pryce & J.&M.Illiff, 1990.
- \*135/41/3x4. *Aster* × *versicolor* (*A. laevis* × *A. novi-belgii*) (Late Michaelmas-daisy). Rough roadside verge, Erw-las, Llwynhendy, SS/537.994, I.K.Morgan, 1994, det P.F.Yeo. First record.
- \*135/41/4x5. *Aster* × *salignus* (*A. novi-belgii* × *A. lanceolatus*). Roadside bank, railway station approach, Kidwelly, SN/401.065, G.Hutchinson; +edge of playing field, Llangennech, SN/561.012, I.K.Morgan, both 1994, det. P.F.Yeo. First & second records.
- \*135/41/5. *Aster lanceolatus* (Narrow-leaved Michaelmas Daisy). Bank behind houses, Stradey, Llanelli, SN/495.013; +fly tip on old degraded sand dunes, Llansteffan, SN/357.109, both I.K.Morgan, 1994. First & second records.
- \*135/43/4. *Erigeron karvinskianus* (Mexican Fleabane) (Cedowydd y Clogwyn). Street weed, Carmarthen, SN/414.200, J.N.Davies, 1994. First record.
- +135/71/1. *Petasites hybridus* (Butterbur) (Alan Mawr). Cwm-merchon Farm, SN/698.343, L.Midgley, 1994.
- \*135/83/1. *Cosmos bipinnatus* (Mexican Aster). Base of crumbling wall, Llanelli, SN/510.007, G.Hutchinson, 1994. First record. Growing in gardens c.50 m away.
- +137/3/1. *Luronium natans* (Floating Water-plantain) (Dŵr-lyriad Nofiadwy). At least 100 plants in old ox-bow cut off from Afon Tywi, 200 m S of Llanwrda station, SN/715.308, R.G.Woods, 1993. Second record & first since 1962.
- +152/3/4. *Eleocharis multicaulis* (Many-stalked Spike-rush) (Sbigfrwynen Gadeiriog). Valley mire, 200 m S of Pencaerau Mill, near Talog, SN/334.270, H.J.Killick & J.Bevan, 1994.
- +152/16/73. *Carex pulicaris* (Flea Sedge) (Chwein-hesgen). Blaenwaun area, SN/2.2(1), G.M.Kay & J.Gibson; +valley mire, 200m S of Pencaerau Mill, near Talog, SN/334.270, H.J.Killick & J.Bevan, both 1994.
- +153/11/1. *Milium effusum* (Wood Millet) (Miledwellt). Cwm-merchon Farm, SN/698.343, L.Midgley, 1994.
- +153/39/2. *Agrostis gigantea* (Black Bent) (Maeswellt Mawr). Forest trackside, Cwm Rhaiadr Plantation, SN/761.427, J.&M.Illiff, 1994.
- +153/39/8. *Agrostis vinealis* (Brown Bent) (Maeswellt y Cŵn). Near Tyddynfari, SN/26.29, G.M.Kay & J.Gibson, 1994.
- \*153/47/2x3. *Alopecurus* × *pletkei* (*A. geniculatus* × *A. bulbosus*) (a hybrid foxtail). Salt marsh of Afon Taf, 1 km NE of Black Scar, W of Llansteffan, SN/320.112, M.Lloyd, 1994, det. T.A.Cope. First VC & Welsh record.

- +153/47/3. *Alopecurus bulbosus* (Bulbous Foxtail) (Cynffonwellt Oddfog). Saltmarsh of Afon Taf, 1 km NE of Black Sear, W of Llansteffan, SN/230.112, M.Lloyd, 1994, det. T.A.Cope. First post 1970 record for hectad.
- +153/59/2. *Hordeum murinum* (Wall Barley) (Heiddwellt y Mur). Cwm-merchon Farm, SN/698.343, L.Midgley, 1994.
- +162/5/1. *Neottia nidus-avis* (Bird's-nest Orchid) (Tegeirian Nyth Aderyn). Wooded area between minor road & Afon Tywi, 2.7 km S of Cilycwm, SN/754.373, R.G.Woods, 1994. Forth record.
- +162/13/1. *Platanthera chlorantha* (Greater Butterfly-orchid) (Tegeirian Llydanwyrdd). Three flowering spikes in churchyard meadow, Chapel, 400 m NW of Blaenwaun, SN/233.276, G.M.Kay & J.Gibson, 1994. With 5 *Listera ovata*, & 2 *Orchis mascula*.
- 162/18/1. *Dactylorhiza fuchsii* (Common Spotted-orchid) (Tegeirian Mannog). Many plants in species-rich neutral grassland, Chapel graveyard, 400 m NW of Blaenwaun, SN/233.276, G.M.Kay & J.Gibson, 1994.

PEMBROKE, v.c. 45 (Comm. S.B.Evans)

- +17/1/2. *Polystichum aculeatum* (Hard Shield-fern) (Gwrychdredynen Galed). Two plants only on edge of disused railway line, Maenclochog, SN/092.263, J.W.Donovan *et al.*, 1994.
- +17/3/5. *Dryopteris aemula* (Hay-scented Buckler-fern) (Marchredynen Aroglus). A large population including many young plants, streamside under conifers, Samaria, SN/120.405, S.B.Evans, 1994.
- +46/9/1. *Moenchia erecta* (Upright Chickweed) (Gornwlyddyn Syth). Grazed acidic grassland, Ramsey Island, SM/700.234, P.Jones, 1994.
- +46/20/11. *Silene gallica* (Small-flowered Catchfly) (Gludlys Amryliw). In cereal stubble, Aber Mawr, Granston, SM/883.348, J.Partridge, 1994. Other arable weeds present included *Chrysanthemum segetum*, *Kickxia elatine*, *Sherardia arvensis*.
- +!75/32/23. *Cotoneaster atropurpureus* (Purple-flowered Cotoneaster). Old wall in lane, NW of village green and church, Penally, SS/116.993, G.Hutchinson, 1988, det. J.Fryer.
- +77/19/1. *Trifolium ornithopodioides* (Bird's-foot Clover) (Corfeillionen Wen). Disused runways of Dale Airfield, SM/79.06, F.Bos, 1994.
- +77/19/25. *Trifolium subterraneum* (Subterranean Clover) (Meillionen Wen Ymgudd). Frequent to locally abundant in unimproved grassland, horse grazed, Dale Fort, SM/820.051, K.Bissett, 1994.
- +107/29/2. *Petroselinum segetum* (Corn Parsley) (Eilunberllys). Several plants in disturbed grassland, Ffordd Porthclais, SE of St David's, SM/745.248, G.R.&S.B.Evans, 1993.
- 135/28/6a. *Hieracium umbellatum* subsp. *umbellatum* (Narrow-leaved Hawkweed) (Heboglys Culddail). Minor roadside bank on E side of road near Cadifor Hall, 2.3 km N of Treleck, SN/284.324, G.Hutchinson & R.D.Pryce, 1993.
- +152/5/1. *Scirpus sylvaticus* (Wood Club-rush) (Clwbfrwynen y Coed). Wetland, East Williamson, SN/095.044 & SN/101.046, M.Lang, 1994.
- +162/5/1. *Neottia nidus-avis* (Bird's-nest Orchid) (Tegeirian Nyth Aderyn). Grassy bank of minor road within replanted ancient woodland, Minwear Wood, SN/053.137, G.Nuttgens, 1994.
- 162/13/1. *Platanthera chlorantha* (Greater Butterfly-orchid) (Tegeirian Llydanwyrdd). +Three spikes in neutral grassland hay meadow, Mountain Meadows, Clarboston Road, SN/061.221, S.&A.Coker; +one large spike in secondary woodland, Fachongle Isaf, Constantinople, SN/081.377, N.McIlvenna, both 1994.
- 162/20/3. *Orchis morio* (Green-winged Orchid) (Tegeirian y Waun). +Two spikes in neutral grassland, Tangiers, Haverfordwest, SM/953.186, A.Moorby; +37 spikes in coastal grassland and heath, West Blockhouse Point, Dale, SN/001.018, K.Bissett; +damp unimproved hay field, Bee Hall Farm, Pembroke, SN/001.018, M.Lang, all 1994.

## CARDIGAN, v.c. 46 (comm. A.O.Chater)

- 5/1/1. *Ophioglossum vulgatum* (Adder's-tongue) (Tafod y Neidr). +At least 500 fronds in unimproved pasture, 500 m N of Pencarreg, Llanrhystud, SN/532.699, S.Morley, 1994; +unimproved pasture SSW of Esgair-las, Cellan, SN/633.477, BSBI Field Meeting, 1994; +unimproved pastures above Llanfair Clydogau, SN/6.5, A.O.Chater, J.Turner & J.P.Woodman, 1994.
- +5/2/1. *Botrychium lunaria* (Moonwort) (Lloerlys). Unimproved pastures above Llanfair Clydogau, SN/6.4, A.O.Chater, J.Turner & J.P.Woodman, 1994.
- \*17/1/1x2. *Polystichum* x *bicknellii* (*P. setiferum* x *P. aculeatum*) (a hybrid shield-fern). With both parents in wheelpit of Esgair Hir leadmine, 7 km ENE of Tal-y-bont, SN/727.910, S.P.Chambers, 1993, conf. A.M.Paul. First record.
- \*128/4/1. *Eranthis hyemalis* (Winter Aconite) (Bleidd-dag y Gaef). Established in lawns, Welsh Agricultural College, Llanbadarn Fawr, SM/602.811, S.P.Chambers, 1994. First record.
- +28/13/25b. *Ranunculus penicillatus* subsp. *pseudofluitans* var. *pseudofluitans* (Stream Water-crowfoot) (Crafanc y Nant). With *R. peltatus* in Afon Dulas, by Ffynnon Cybi, Llangybi, SN/605.528, A.O.Chater, 1993, det. S.D.Webster, 1994. Second record.
- +30/1/4. *Papaver rhoeas* (Common Poppy) (Pabi Coch). Refuse tip, SW side of Pendinas, Aberystwyth, SN584.799, S.P.Chambers, 1994.
- +30/1/5a. *Papaver dubium* subsp. *dubium* (Long-headed Poppy) (Pabi Hirben). Refuse tip, SW side of Pendinas, Aberystwyth, SN584.799, S.P.Chambers, 1994.
- +31/5/1b. *Fumaria capreolata* subsp. *babingtonii* (White Ramping-fumitory) (Mwg y Ddaear Afreolus). Tipped soil on roadside NM of Cilcert, Ffos-y-ffin, SN/440.614, J.P.Woodman & A.O.Chater, 1994.
- +43/1/6. *Chenopodium rubrum* (Red Goosefoot) (Troed yr Ŵydd Ruddog). Abundant around old, extensive manure heap, 200 m WNW of Cilcert, Ffos-y-ffin, SN/439.614, A.O.Chater, 1994.
- +43/1/13. *Chenopodium ficifolium* (Fig-leaved Goosefoot) (Troed yr Ŵydd Ffigys-ddail). Disturbed part of refuse tip, SW side of Pendinas, Aberystwyth, SN585.799, J.P.Woodman & A.O.Chater, 1994. Second record.
- \*43/3/4. *Atriplex longipes* (Long-stalked Orache) (Llygwyn Hirgoes). Amongst *Juncus maritimus* along c.100 m at top of salt marsh alongside sea wall 300 m E of mouth of Afon Leri, Dyfi estuary, SN/620.936, A.O.Chater, 1993, det. J.R.Akeroyd. First record.
- !44/1/1. *Amaranthus retroflexus* (Common Amaranth) (Chwyn Moch). One plant on pavement by Llys Hen Ysgol, North Road, Aberystwyth, SN/587.818, A.O.Chater, 1994. First record since 1928.
- +46/5/4. *Stellaria neglecta* (Greater Chickweed) (Brechlys Mwyaf). Pathside in damp ash wood below Penlan-y-mor, Gilfachreda, SN/416.595, A.O.Chater, 1994.
- +46/9/1. *Moenchia erecta* (Upright Chickweed) (Cornwlyddyn Syth). Dry grassy slope W of Banc Llanrhystud, SN/534.703, J.Turner & J.P.Woodman, 1994. First record since 1941 (near Mwnt) and only extant record.
- +146/18/1. *Lychnis coronaria* (Rose Campion) (Lluglys Gwridog). Rough ground by Welsh Books Centre, Bryn Road, Aberystwyth, SN/586.823, S.P.Chambers, 1994. Second record.
- +47/8/10. *Rumex hydrolapathum* (Water Dock) (Tafol y Dŵr). Large clump at upstream tip of island in Afon Teifi just below Llechryd Bridge, SN/217.436, A.O.Chater, 1994. Apparently arrived here in 1993, having been washed down river as a mature plant.
- \*151/1/for. *Hypericum forrestii* (a St John's-wort). Large bush in mixed woodland on N bank of Afon Ystwyth in old leat 200 m W of Chwarel Goch, Pontrhyd-y-groes, SN/725.721, A.O.Chater, 1994, det. N.K.B.Robson. First record. A 'wild' site, far from any habitation.
- \*57/1/9b. *Viola palustris* subsp. *juressi* (Marsh Violet) (Fioled y Gors). Alder carr, Rhos Pil-bach D.W.T. Reserve, Plwmp, SN/367.529, A.O.Chater & S.P.Chambers, 1994.

- \*61/1/3a. *Populus nigra* subsp. *betulifolia* (Black Poplar) (Poplysen Ddu). Steambank below Tanllan, Llanfihangel-y-Creuddyn, SN/658.762, and another tree 450 m downstream, A.O.Chater, 1992, det. E.Milne-Redhead; bank of dry gulley, by tributary of Afon Mwldan, Glennydd, Penparc, SN/212.485, A.O.Chater, 1994. First and second records as native trees. About 25 obviously planted trees are known in the VC.
- +61/2/12x16. *Salix* × *ambigua* (*S. aurita* × *S. repens*) (a hybrid willow). One plant, damp heathy pasture, Rhos Gargoed SSSI, Strata Florida, SN/758.668, A.O.Chater, J.Turner & J.P.Woodman, 1994. Second post-1930 record.
- +61/2/16. *Salix repens* (Creeping Willow) (Corhelygen). Flushed heathy slope 1.5 km E of Eglwys Fach P.O., SN/702.956, R.Bamford & A.O.Chater, 1994. Seems to be var. *argentea*, known from the Ynys-las dunes, but not previously inland in the VC.
- !62/10/1. *Matthiola incana* (Hoary Stock) (Murwyll Coesbren). Abundant on steep bank above road 100 m up from beach, Llangranog, SN/311.541, A.O.Chater & S.P.Chambers, 1994. Seen here by Salter (1935).
- +62/12/3. *Rorippa islandica* (Northern Yellow-cress) (Berwr Melyn y Gogledd). About 150 plants in ox-bow hollow in pasture 150m WSW of Bercoeduchaf, 3 km WSW of Llandsul, SN/392.396, A.O.Chater, 1994.
- +62/12/4. *Rorippa palustris* (Marsh Yellow-cress) (Berwr Melyn y Gors). About 30 plants on disturbed ground and ditch margin 600 m W of Ty-mawr, Cors Fochno NNR, SN/623.928, A.D.Hale, 1994, conf. A.O.Chater. The only record of this species away from the Teifi.
- +62/28/1. *Thlaspi arvense* (Field Penny-cress) (Codywasg). About 30 plants in strawberry field, Penlan-las, SW of Rhydyfelin, SN/606771, S.P.Chambers, 1995. Not seen here in 1991-1993.
- +!62/38/1. *Hirschfeldia incana* (Hoary Mustard) (Cedw Penllwyd). Waste ground opposite Police Station, Park Avenue, Aberystwyth, SN/587.812, S.P.Chambers, 1994.
- \*!65/8/1. *Gaultheria shallon* (Shallon) (Sialon). Colony 15 × 10 m in mixed woodland 100m NW of Furnace bridge, SN/684.952, A.O.Chater, 1994; extensively naturalised in estate woodland, Glandyfi Castle, SN/692.965, A.O.Chater & W.M.Condry, 1994. First and second records.
- 69/6/3. *Anagallis minima* (Chaffweed) (Corfrilys). A few plants in one place only, with abundant *Radiola*, Aberleri Fields, Cors Fochno NNR, SN/614.914, A.O.Chater & M.Bailey, 1994. Recorded at Ynys-las in 1841 and 1948, but otherwise there are no records for the north of the VC.
- !72/1/1. *Escallonia macrantha* (Escallonia) (Esgallonia). Bush between sleepers of disused railway line, Station yard, Aberystwyth, SN/585.815, S.P.Chambers, 1994. Second record.
- +!74/7/1. *Tolmiea menziesii* (Pick-a-back-plant) (Crudlys). By old cottage site in mixed woodland, Cwm Wyre, 2 km E of Llanrhystud, SN/556.698, J.Davies, 1994. Second record.
- \*75/8/234. *Rubus flexuosus* (a bramble). Dominant over much of mixed deciduous woodland W of Nant Adal, 700 m S of Llanilar, not flowering (but flowering well on nearby roadside hedgebank in open), SN/622.743; scrub on overgrown railway, 1.5 km WNW of Llanilar, SN/607.756, both D.E.Allen & A.O.Chater, 1994. First and second records.
- \*75/8/313. *Rubus nemorosus* (a bramble). Stream bank E of church, Llanrhystud, SN/538.696, D.E.Allen & A.O.Chater, conf. A.Newton. First record.
- +75/19/9. *Alchemilla xanthochlora* (Intermediate Lady's-mantle) (Mantell Fair Gyfryngol). Frequent in neglected pasture SE of Tynybanadl, Swyddffynnon, SN/698.665, S.Morley, 1994.
- !75/19/15. *Alchemilla mollis* (a lady's-mantle). +Grassy waste ground, Llanilar station yard, SN/626.753, S.P.Chambers, 1994; +grassy central strip of lane running N from A484 at Alltbywla, 1 km NW of Cenarth, SN/260.423; roadside verges and waste ground, upper part of Pontrhyd-y-groes, SN/741.723, both A.O.Chater, 1994.



- \*75/21/5x16. *Rosa* × *involuta* (*R. pimpinellifolia* × *R. sherardii*) (a hybrid rose). Coastal heath, Ministry of Defence site, Aber-porth, SN/245.524, A.O.Chater, 1994. First record.
- 75/28/24. *Sorbus torminalis* (Wild Service-tree) (Cerddinen Folwst). Two trees on wooded N bank of Afon Drywi 400 m up from sea, SN/428.604, A.O.Chater, 1994; c.15 trees on steep S facing oak coppice replanted with larch, Cwm Wyre, 2 km E of Llanrhystud, SN/558.699, J.Spikes & J.Davies, 1994.
- !77/22/1. *Laburnum anagyroides* (Laburnum) (Tresi Aur). Self-sown bush on waste ground between sidings, Aberystwyth station yard, SN/586.814, S.P.Chambers, 1994. The first record of a certainly self-sown plant in the VC.
- 77/14/11c. *Vicia sativa* subsp. *sativa* (Common Vetch) (Ffugbysen Faethol). One plant on reconstructed bank below A44(T) by Glanyrafon Bridge, Llanbadarn Fawr, SN/609.805, S.P.Chambers, 1994. Only extant locality for this subspecies and apparently the first record since before 1935.
- +77/14/12. *Vicia lathyroides* (Spring Vetch) (Ffugbysen y Gwanwyn). Dry coastal slope W of Banc, Llanrhystud, SN/534.703, J.P.Woodman & J.Turner, 1994.
- +77/15/12. *Lathyrus nissolia* (Grass Vetchling) (Ytbysen Goch). One plant on grassy bank by gravel extraction works, Glanrhyd-ty-noeth, Capel Bangor, SN/667.785, R.Liford, 1994. Site destroyed a month after discovery.
- +84/1/3x6. *Epilobium montanum* × *E. obscurum* (a hybrid willowherb). Disturbed shaley ground, Pencwmganol, Cwm Wyre, SN/572.705, A.O.Chater, 1994, det. T.D.Pennington. Second record.
- \*184/4/1x3. *Oenothera glazioviana* × *O. biennis* (a hybrid evening-primrose). Five plants on refuse tip on SW side of Pendinas, Aberystwyth, SN/584.799, S.P.Chambers, 1994, conf. J.C.Bowra. First record.
- !99/1/1. *Acer platanoides* (Norway Maple) (Masarnen Norwy). Abundant self-sown saplings and seedlings on wooded slope above Afon Ystwyth just E of road bridge, Llanfarian, derived from old trees in pasture across river, SN/591.777, S.P.Chambers, 1994.
- +103/2/2. *Erodium moschatum* (Musk Stork's-bill) (Pig y Crêyr Mwsgaidd). Four plants at edge of B4321 road under retaining wall below houses 250 m up from shore, Llangrannog, SN/312.541, A.O.Chater & S.P.Chambers, 1994. Second record and first since 1941 (near Aber-porth).
- +111/3/2b. *Calystegia sepium* subsp. *roseata* (Hedge Bindweed) (Taglys Mawr). W hedge of A487(T), 200 m S of Pont Llyfnant, Glândyfi, SN/703.976, A.O.Chater, 1994.
- \*116/4/3. *Symphytum tuberosum* (Tuberous Comfrey) (Cyfardwf Oddfynog). Hedgebank of lane from road to Y Felin, Aber-mad, SN/596.763, A.O.Chater, 1994.
- 116/15/1 × 4. *Myosotis* × *suzae* (*M. scorpioides* × *M. laxa*) (a hybrid forget-me-not).  
+Swamp at SW corner of Glaryrafon Industrial Estate, Llanbadarn Fawr, SN/607.800;  
+shaded pond 200 m ENE of Fferm-y-peel, Rhos Pil-bach DWT Reserve, Plwmp, SN/368.528; +ditch in pastures, Brongest, Lampeter, SN/585.477; all A.O.Chater, 1994.
- \*118/1/ann. *Stachys annua* (Annual Yellow-woundwort) (Briwllys-melyn Blynnyddol). One plant on waste ground opposite Police Station, Park Avenue, Aberystwyth, SN/587.812, J.P.Lyons, 1994.
- 118/6/3. *Galeopsis speciosa* (Large-flowered Hemp-nettle) (Penboeth Amryliw). +Infilled railway cutting behind Penyrangor, Aberystwyth, SN/581.808, A.O.Chater, 1994;  
+shingle by Afon Ystwyth above Pen-y-banc bridge, Llanilar, SN/620.755, J.P.Lyons, 1994. Apparently becoming commoner in the last few years.
- 118/18/4. *Clinopodium vulgare* (Wild Basil) (Brenhinllys Gwyllt). +Disturbed sandy slope above Teifi estuary, Penyregwyd, Gwbert, SN/164.485, A.O.Chater & J.P.Woodman, 1994; +edge of ash wood W of Pantygwyfol, Llanilar, SN/622.758, J.P.Lyons, 1994.
- +118/23/3xlon. *Mentha* × *villosa* × *nervata* (*M. longifolia* × *M. spicata*) (a hybrid mint). Well-established on reclaimed part of refuse tip, SW side of Pendinas, Aberystwyth, SN/582.799, A.O.Chater & J.P.Woodman, 1994. Second record.

- 120/1/6. *Callitriche brutia* (Pedunculate Water-starwort) (Brigwlydd Coesog). +Margin of recently made pond by coastguard Stn., New Quay Head, SN/378.600; +dominant, with *Elatine hexandra*, on area of mud c.80x5-15 m by Teifi, S part of Cors Caron NNR, SN/673.615, both A.O.Chater, 1994. +Forming circular patches to 150 cm in diameter, dying away in centre, on bare peat by ditches, Aberleri Fields, Cors Fochno NNR, SN/610.912, A.O.Chater & M.Bailey, 1994. +Exposed mud at margin of Llyn Teifi (recorded here by Burkill & Willis in 1894), SN/787.679; +margin of Llyn Egnant, SN/790.672, both A.O.Chater & R.A.Jones, 1994. +Abundant around margin and on bed of drained reservoir, Bog Pond, 2 km NW of Ponterwyd, SN/732.824, A.O.Chater, 1994.
- +124/13/3x4. *Linaria x dominii* (*L. purpurea* x *L. repens*) (a hybrid toadflax). One plant in colony of *L. repens* in scrub on disused railway, 50 m N of Teifi bridge, Lampeter, SN/581.476, A.O.Chater, 1994.
- 124/23/1. *Parentucellia viscosa* (Yellow Bartsia) (Gorudd Melyn). +Six plants on reconstructed slope below A44(T) by Glanyrafon Bridge, Llanbadarn Fawr, SN/609.805, S.P.Chambers, 1994. Second record; +abundant over several acres of leadmine spoil, reclaimed and reseeded in 1989, lower part of Goginan leadmine, SN/689.815, J. Harvey & J. Lewis 1994. Second and third records. In the latter site *Parentucellia* has not been seen in previous years and, if present, must have been in very small quantity; the site has been undisturbed, except for occasional grazing, since 1989.
- 124/25/2b. *Pedicularis sylvatica* subsp. *hibernica* (Lousewort) (Melog y Cŵn). +Rhos pasture, Rhos Pil-bach DWT Reserve, Plwmp, SN/368.529, A.O.Chater & S.P.Chambers, 1994; +poor fen, Clwydgoch, 2km N of Cilcennin, SN/520.617, A.O.Chater & P.Dalley, 1994; +pingo rampart, Rhos Llawr-cwrt NNR, Talgarreg, SN/411.500; +wet heath, Cors y Cletwr NNR, Talgarreg, SN/420.494; +heathy pasture above Llanfair Clydogau, SN/6.4, all A.O.Chater, 1994.
- +129/3/1. *Wahlenbergia hederacea* (Ivy-leaved Bellflower) (Clychlys Eiddew). Poor fen, Clwydgoch, 2 km N of Cilcennin, SN/520.617, A.O.Chater & P.Dalley, 1994.
- \*130/6/5b. *Galium palustre* subsp. *elongatum* (Great Marsh-bedstraw) (Briwydden Fawr y Llyn). By stream in wooded dingle 2 km WSW of Aber-ffrwd, SN/667.778, S.P.Chambers, 1994. First record.
- 133/1/2. *Valerianella carinata* (Keeled-fruited Cornsalad) (Llysiau'r Oen Rhychiog). +By gatepost at house entrance opposite St Anne's church, Penparcau, SN/592.799, S.P. Chambers, 1994; +c.60 plants on gravelly track by ford, Ynys-hir, Eglwys-fach, SN/684.958, A.O.Chater, 1994.
- +135/6/3. *Cirsium dissectum* (Meadow Thistle) (Ysgallen Gorswaun). Three colonies in valley mire 1 km ESE of Berthgoed, Strata Florida, SN/776.649, A.O.Chater, 1994.
- +135/28/14. *Hieracium subcrocatum* (a hawkweed). Shaded rocks in gorge of Afon Mwyr, 2.5 km E of Strata Florida, SN/770.652, A.O.Chater, 1994, det. P.D.Sell.
- 135/28/24. *Hieracium scabrisetum* (a hawkweed). +Leadmine spoil 750 m W of Cwmerfyn farm, SN/685.830, J.Bevan & A.O.Chater, 1994, conf. P.D.Sell; +rocks in Afon Myherin 150 m N of Blaenmyherin, 5 km E of Ponterwyd, SN/799.797, A.O.Chater, 1991, det. P.D.Sell; +verge of forestry road by Nant Caeliogyn bridge, Cae Gaer, SN/823.820, A.O.Chater, 1993, det. P.D.Sell.
- +135/28/62. *Hieracium vulgatum* (a hawkweed). Ballast by sidings just SE of Aberystwyth station, SN/588.811, A.O.Chater, 1990, det. P.D.Sell 'fits exactly var. *subravusculum* W.R.Linton.'
- 135/28/67. *Hieracium subamplifolium* (a hawkweed). +N facing cliff, 1 km ENE of Mydroilyn, SN/468.555, J.Bevan & A.O.Chater, 1994; +roadside bank under trees 1.2 km NW of Llanfair Clydogau, SN/618.520, A.O.Chater, 1994; +rocks in Afon Rheidol below Gyfarllwyd Falls, Devil's Bridge, SN/742.775, A.O.Chater, 1994; all det. P.D.Sell.
- +135/28/70. *Hieracium diaphanoides* (a hawkweed). Scree below waterfalls at head of Afon Myherin, 5 km E of Ponterwyd, SN/798.806, J.Bevan & A.O.Chater, 1994.

- +135/28/77. *Hieracium submatubile* (a hawkweed). Abundant along 500 m of roadside hedgebank SE of Betws Leucu, SN/613.578, J.Bevan & A.O.Chater, 1994, conf. P.D.Sell.
- !135/28/138. *Hieracium grandidens* (a hawkweed). +Under beeches 200m NNW of Trawsgoed mansion, SN/669.732, A.O.Chater, 1994, conf. J.Bevan; +dry E facing rocks by Afon Diliw, Lluest-dolgwal, Cwmystwyth, SN/842.769, A.O.Chater, 1990, det. P.D.Sell.
- +135/28/153. *Hieracium argenteum* (Silver Hawkweed) (Heboglys Arian). Dry lawn by Bethel chapel, Pontrhyd-y-groes, SN/739.724, A.O.Chater, 1994, det. P.D.Sell.
- \*1135/80/2. *Galinsoga quadriradiata* (Shaggy Soldier) (Galinsoga Blewog). Weed in flowerbed, Aberystwyth promenade, SN583.823, S.P.Chambers, 1994. First record.
- \*148/1/1. *Spirodela polyrrhiza* (Greater Duckweed) (Llinad Mawr). In small quantity among *Lemna minor* in ox-bow pool S of Afon Teifi, 1.5 km W of Cenarth, SN/253.413, A.O.Chater, 1994. First record. Far from any habitation and no non-native species present.
- \*151/1/25x26. *Juncus* × *diffusus* (*J. effusus* × *J. inflexus*) (Diffuse Rush) (Brwynen Dryledol). Damp pasture by Afon Mwldan, Penparc, SN/196.483; damp pasture N of Llwyn-llwyd, Penparc, SN/201.489, both J.P.Woodman & A.O.Chater, 1994. First and second records. +Damp pasture, Coed Maidie B.Goddard D.W.T. Reserve, Llechryd, SN/212.440, S.P.Chambers, 1994, conf. T.A.Cope.
- 152/3/3. *Eleocharis uniglumis* (Slender Spike-rush) (Sbigfrwynen Un Plisgyn). Abundant over several acres, with *E. palustris*, around margin and on partially vegetated peaty bed of seasonally drained leadmine reservoir, Bog Pond, 2 km NE of Ponterwyd, SN/732/824. A.O.Chater, 1994, conf. S.M.Walters. This site is at 325 m a.s.l., and the pH of the substrate is 5.0-6.9. No other calcicolous species are present. *E. uniglumis* is rarely found inland.
- +152/8/2. *Isolepis cernua* (Slender Club-rush) (Clwbfrwynen Eiddil). Flush fen N of Llwyn-llwyd, Penparc, SN/201.488, A.O.Chater & J.P.Woodman, 1994. The only recent inland record.
- +152/16/9. *Carex vesicaria* (Bladder-sedge) (Hesgen Chwysigennaidd). Colony 1.5x1 m in dried-up pond, Pant-y-gwaith leadmine, Pontrhyd-y-groes, SN/747.722, A.O.Chater & J.P.Woodman, 1994.
- +152/16/18. *Carex dioica* (Dioecious Sedge) (Hesgen Ysgar). Flush by track SE of Bryn-bras farm, Ponterwyd, SN/746.799, A.O.Chater & J.P.Woodman, 1994.
- 152/16/23. *Carex hirta* (Hairy Sedge) (Hesgen Flewog). +Marshy pasture, Pylliau Gleision, Highhead, SN/507.428, A.O.Chater, 1994; +disused railway 1 km W of Llanilar, SN/614.754, J.P.Lyons, 1994.
- +152/16/24. *Carex lasiocarpa* (Slender Sedge) (Hesgen Fain). Pools in upland mire 2 km NE of Nant-y-maen, SN/776.598, A.O.Chater, 1994.
- \*!153/4/1. *Sasaella ramosa* (Hairy Bamboo). Extensively naturalised in estate woodland, Glandyfi Castle, SN/692.966, A.O.Chater & W.M.Condry, 1994. First record.
- 153/30/1. *Trisetum flavescens* (Yellow Oat-grass) (Ceirchwellt Melyn). +Grassy triangle in middle of crossroads, South Gate, Penparcau, SN/593.799; +5 clumps on refuse tip, SW side of Pendinas, Aberystwyth, SN/584.799, both S.P.Chambers, 1994.
- +153/40/1. *Calamagrostis epigejos* (Wood Small-reed) (Mawnwellt). Colony 30x10 m on steep scrub slope on sea cliffs N of Mwnt-bach, Felin-wynt, SN/225.519, A.O.Chater, 1994.
- +153/50/3. *Bromus racemosus* (Smooth Brome) (Pawrwellt Llyfn). Abundant in hay meadow 500 m N of Pencarreg, Llanrhystud, SN/531.699 - 532.700, J.P.Woodman, 1994.
- \$158/24/1. *Allium schoenoprasum* (Chives) (Cennin Syfi). Hedgebank below caravan park, Penlan-y-mor, Gilfachreda, SN/416.594, A.O.Chater, 1994. Second record.
- \*!158/33/5b. *Narcissus pseudonarcissus* subsp. *obvallaris* (Tenby Daffodil) (Cenhinen Dinbych y Pysgod). Roadside slope, Bank y Warren, Penparc, SN/204.476, A.O.Chater

& J.R.Akeroyd, 1994; roadside hedgebank W of The Woodlands, Ciliau Aeron, SN/509.586, A.O.Chater, 1994. First and second localised records. Found well naturalised in 15 other sites, mostly churchyards and roadsides, but also in scrub in corner of pasture where Cefn-coch footpath leaves road, Trefenter, SN/612.701, A.O.Chater, 1994.

- \*159/8/1. *Crocus vernus* (Spring Crocus) (Saffrwm y Gwanwyn). Several hundreds of clumps, well-naturalised in Penparc chapel graveyard, SN/212.478; abundant over much of Tregroes churchyard, SN/406.447, both A.O.Chater, 1994. First and second records. Naturalised in at least 20 other sites, chiefly church and chapel graveyards and roadside verges.
- \*159/13/1. *Crocsmia paniculata* (Aunt-Eliza). Large clump in hedgebank of cemetery, Llancynfelyn, SN/648.922.; slope S of Afon Rheidol by playing fields, Penparcau, SN/592.804, both A.O.Chater, 1994. First and second records.
- \*162/16/1b. *Gymnadenia conopsea* subsp. *densiflora* (Fragrant Orchid) (Tegeirian Pêr). Base-rich fen by Afon Mwdan, Penparc, SN/195.483, A.O.Chater, 1986, det. F.Rose, 1990 from colour slides. First record.
- \*162/16/1c. *Gymnadenia conopsea* subsp. *borealis* (Fragrant Orchid) (Tegeirian Pêr). Heathy slope, Banc Cwmerfyn, SN/704.824, A.O.Chater, 1988, det. F.Rose, 1990 from colour slides and pickled floret. First record of subspecies. Known here c.1950-c.1965, when much of slope was reseeded; not seen again until 1977, since when c.20-60 plants have been seen each year.

MONTGOMERY, v.c. 47 (comm. Mrs M.Wainwright)

- 17/3/3b. *Dryopteris affinis* subsp. *cambrensis* (a scaly male-fern). Breidden Hill, SJ/29.14, British Pteridological Society Meeting, 1989.
- \*120/5/2. *Larix kaempferi* (Japanese Larch) (Llarwydden Japan). Plentiful regeneration along forestry tracksides, Uwch-y-Garreg, SN/77.93, A.J.Morton & W.A.Thompson, 1990. First localised record.
- 61/1/3a. *Populus nigra* subsp. *betulifolia* (Black Poplar) (Poplysen Ddu). +Hillside copse with other mature trees, Llansantffraid-ym-mechain, SJ/22.21, M.Wainwright; +beside old mill leat, Pentre, SO/277.918, H.Jones; +meadows between River Severn and R.Mule, SO158.944, C.Small, E.Roberts & M.Wainwright, all 1994.
- \*169/3/1. *Cyclamen hederifolium* (Cyclamen) (Bara'r Hwch). Two well established clumps on bank of the Bechan Brook which joins the roadside, Aberbechan, SO/139.939, C.A.Small, 1989. First record. Clearly a roadside dumping originally, but known here for 9 years and well established.
- \*84/1/3x6. *Epilobium* × *aggregatum* (*E. montanum* × *E. obscurum*) (a hybrid willowherb). Laneside near VC 50 border, Ffridd Llanerch, SJ/14.22, P.M.Benoit, 1988. First localised record.
- \*129/7/2. *Lobelia erinus* (Garden Lobelia). Roadside parking place, NW of Talywern, SH/820.009, C.A.Small, 1989; +stone beach beside Afon Rhiw, NW of Felindre, SJ/160.022, E.Roberts & M.Wainwright, 1989; +Bed of R. Banwy, on stones exposed by drought (far from any habitation), New Bridge, SW of Meifod, SJ/131.100, M.Wainwright, 1990. First and subsequent records.
- \*135/28/34. *Hieracium sparsifolium* (a hawkweed). Rocky banks of Afon Trannon, E of Staylittle, SN/91.93, A.J.Morton, 1987, conf. J.Bevan; +on stone bridge, Llawryglyn, SN/92.91, A.J.Morton, 1987. First & second records.
- \*135/28/140. *Hieracium exotericum* (a hawkweed). Large population with other members of this section, railway cutting, S of Talerddig, SN/93.99; +stream valley woodland on rock ledge, N of Talerddig, SH/93.01, both A.J.Morton, 1989. First & second records.
- \*143/1/1. *Ruppia maritima* (Beaked Tasselweed) (Tusw Dyfrllys). 30-40 plants in 4 different brackish pools in salt-marsh, Dovey Junction, SN/695.985, F.Evans, E.Gwynn & A.Law, 1993. First record.

- +151/1/8. *Juncus ambiguus* (Frog Rush) (Brwynen y Broga). Frequent in upper saltmarsh, Dovey Junction, with *J. bufonius*, SN/695.983, P.M.Benoit, 1987. Second record.
- 153/3/1. *Sasa palmata* (Broad-leaved Bamboo) (Bambŵ). Now spreading in Powis Castle grounds, Welshpool, SJ/21.06, G.Hutchinson, 1989.
- +153/12/10. *Festuca filiformis* (Fine-leaved Sheep's-fescue) (Peisgwellt Manddail). Hummocks in boggy field, NE of Llanfihangel-yng-ngwynfa, SJ/09.15, P.M.Benoit, 1989. Second record.
- \*153/59/1. *Hordeum distichon* (Two-rowed Barley) (Haidd Dwy-resog). Farm manure heap, SE of Llanwyddyn, SJ/02.18, C.J.Tyas, 1986. First record.

MERIONETH, v.c. 48 (comm. P.M.Benoit)

- +156/5/1. *Cystopteris fragilis* (Brittle Bladder-fern) (Rhedynen Frau). Between garden steps, Plas Penrhyn, SW of Minffordd, SH/590.378, R.E.Hughes, 1994.
- 47/1/16. *Persicaria minor* (Small Water-pepper) (Clymog Bychan). In marshland by Afon Glaslyn near Penrhyndeudraeth, SH/5.3, P.M.Benoit, 1994.
- +162/30/8. *Lepidium draba* (Hoary Cress) (Pupurlys Llwyd). Persistent garden weed, Bettws Gwerfil Goch, SJ/03.46, E.Davies, 1994, det. G.Hutchinson.
- 75/8/15. *Rubus bertramii* (a bramble). Lanq, near Hafod-y-meirch, Brithdir, SH/7.1, M.A.E.Richards, 1948, det. D.E.Allen, 1995.
- 110/4/1. *Hyoscyamus niger* (Henbane) (Ffa'r Moch). One plant still on waste sand at Mochras, near Llanbedr, SH/5.2, where recorded by D.A.Jones in 1899, P.M.Benoit & D.J.Brown, 1994.
- \*135/62/12. *Senecio erucifolius* (Hoary Ragwort) (Creulys Llwyd). One large plant on roadside bank, Pont Isllyn, Trawsfynydd, SH/7.3, P.M.Benoit, 1994. First certain record.

CAERNARFON, v.c. 49 (comm. G.Battershall)

- +4/1/4. *Equisetum fluviatile* (Water Horsetail) (Marchrawn yr Afon). Ditches near Llanrhos church, Llandudno, SH/794.801, W.McCarthy, 1994.
- +5/2/1. *Botrychium lunaria* (Moonwort) (Lloerlys). Grassland near lighthouse, Great Orme, SH/755.842, W.McCarthy, 1994.
- 7/1/1. *Cryptogramma crisa* (Parsley Fern) (Rhedynen Bersli). Rock scree in disused quarry, near Gwylwyr Carreglefain, Nefyn, SH/31.41, I.G.Williams, 1991.
- +15/3/1. *Ceterach officinarum* (Rustyback) (Rhedynen Gefngoch). One plant on limestone boulder, Great Orme, SH/756.833; several plants on mortared wall, W Shore, Llandudno, SH/775.815, both W.McCarthy, 1994.
- +17/1/1. *Polystichum setiferum* (Soft Shield-fern) (Gwrychredynen Feddal). Edge of Coed Isaf, Llandudno, SH/803.802; woods in Penrhynside, SH/810.809, both W.McCarthy, 1994.
- 17/3/5. *Dryopteris aemula* (Hay-scented Buckler-fern) (Marchredynen Aroglus). Streamside in deciduous woodland, SH/40.48, R.J.Cooke, 1991.
- 11/1/3. *Polypodium cambricum* (Southern Polypody) (Llawredynen Gymreig). Maritime cliff, Porth Ceiriad, near Abersoch, SH/30.24, I.Edgar & D.Jones, 1991, det. R.H. Roberts.
- +28/13/17b. *Ranunculus ficaria* subsp. *bulbilifer* (Lesser Celandine) (Llygad Ebrill). Edge of footpath, Llandudno, SH/796.813, W.McCarthy, 1994.
- +28/17/4. *Thalictrum minus* (Lesser Meadow-rue) (Arianllys Bach). Limestone crags, Mynydd Pant, Llandudno, SH/813.816, W.McCarthy, 1994.
- +46/5/4. *Stellaria neglecta* (Greater Chickweed) (Brechlys Mwyaf). Woods behind Gloddaeth Isaf farm, Llandudno, SH/811.812, W.McCarthy, 1994.
- +46/25/5. *Dianthus deltoides* (Maiden Pink) (Penigan Gwryfaidd). Limestone grassland near summit, Great Orme, SH/765.834, W.McCarthy, 1994.

- \*\$46/8/1. *Myosoton aquaticum* (Water Chickweed) (Llinesg y Dŵr). Flower beds, Llandudno, SH/780.827, W.McCarthy, 1994. First confirmed record.
- +51/1/10. *Hypericum humifusum* (Trailing St Johns-wort) (Eurinllys Mân Ymdaenol). Grassy sea cliffs, Great Orme, SH/751.835, W.McCarthy, 1994.
- 51/1/11. *Hypericum linarifolium* (Toadflax-leaved St John's-wort) (Eurinllys Culddeiliog). 31 plants at new site in hectad on rocky outcrops facing SE, Pwllheli, SH/3., I.Edgar, 1991; +25 plants on rock ledges and short cliff top turf facing SE, Tremadog, SH/5.4. A.Jones, 1991.
- +62/32/1. *Subularia aquatica* (Awlwort) (Mynawydlys Dyfrdri). Muddy shore of Llyn Eigiau, near Dolgarrog, SH/722.6466, W.McCarthy, 1994.
- +62/33/1. *Diplotaxis tenuifolia* (Perennial Wall-rocket) (Cedw Meindwf y Tywod). Dunes between Conwy Morfa & Penmaenbach Point, c.2 km NW of Conwy, SH/76.78, R.Lewis, 1994.
- \*!62/36/1. *Erucastrum gallicum* (Hairy Rocket) (Berwr Ffrengig). In tarmac on promenade, Llandudno, SH/792.821, W.McCarthy, 1994. First record.
- +!62/38/1. *Hirschfeldia incana* (Hoary Mustard) (Cedw Penllwyd). Side of track on grassy bank, Varde, Deganwy, SH/78.79, R.Lewis, 1994.
- +!62/40/1. *Rapistrum rugosum* (Bastard Cabbage) (Berwr Crychiog). Dunes between Conwy Morfa & Penmaenbach Point, c.2 km NW of Conwy, SH/76.78, R.Lewis, 1994.
- +75/8/93. *Rubus cardiophyllus* (a bramble). Hedgerow, near Trefriw, SH/78.62, G.Battershall, 1994, conf. A.Newton.
- +75/8/154. *Rubus lanaticaulis* (a bramble). Hedgerow, Cwm Penmachno, SH/81.52, G.Battershall, 1994, conf. A.Newton.
- +75/8/299. *Rubus pedemontanus* (a bramble). Woodland edge, Cwm Penmachno, SH/81.52, G.Battershall, 1994, conf. A.Newton.
- +!75/19/15. *Alchemilla mollis* (a lady's-mantle). Waste ground, Deganwy, SH/77.79, G.Battershall, 1994.
- +!75/21/6. *Rosa rugosa* (Japanese Rose) (Rhosyn Japan). Waste ground, Glan Conwy, SH/79.77, G.Battershall, 1994.
- +75/21/12dum. *Rosa canina* group *Dumales* (Dog-rose) (Rhosyn Coch Gwyllt). Steep slope on mountainside, Nantffrancon, Snowdonia, SH/63.63, A.P.Conolly *et al.*, 1994, det. A.L.Primavesi.
- 75/21/12 x 5. *Rosa* x *hibernica* (*R. canina* x *R. pimpinellifolia*) (a hybrid rose). Roadside hedge, Poth Neigwl, Lleyn, SH262.292, A.Burns & A.P.Conolly, 1994, det. A.L.Primavesi. First VC & second Welsh record.
- +75/21/13b. *Rosa caesia* subsp. *glauca* (Glaucous Dog-rose) (Rhosyn Llwydwyrdd). Hedge-bank, Borth Colman, Llangwnadl, Lleyn, SH/195.341, A.P.Conolly & A.Burns, 1994, det. A.L.Primavesi.
- +!75/28/7. *Sorbus intermedia* (Swedish Whitebeam) (Cerddinen Dramor). Waste ground, Deganwy, SH/77.79, G.Battershall, 1994.
- +!75/32/18. *Cotoneaster conspicuus* (Tibetan Cotoneaster). Heathland, Gogarth reserve, Great Orme, SH/759.831, W.McCarthy, 1994, conf. J.Fryer. Second record.
- \*!75/32/22. *Cotoneaster hjelmqvistii* (Hjelmqvist's Cotoneaster). Edge of path near toll-gate, W shore, Llandudno, SH/769822, W.McCarthy, 1994, conf. G.M.S.Easy. First VC & second Welsh record.
- +!77/8/2sat. *Lotus corniculatus* var. *sativus* (Common Bird's-foot-trefoil) (Pysen y Ceirw). Large, 0.6 m patch with a few small plants nearby on road verge, below Sarn & Four Crosses, SH/222.317, A.P.Conolly, 1994, det. C.A.Stace.
- +84/1/5. *Epilobium tetragonum* (Square-stalked Willowherb) (Helyglys Pedronglog). Damp hollow on margin of pasture, Bardsey Island, SH/118.227, A.P.Conolly, A.Burns & W.E.Hughes, 1994.
- +!88/1/2. *Mercurialis annua* (Annual Mercury) (Bresych y Cŵn Blynnyddol). Garden weed, Ty Gwyn road, Great Orme, SH/777.828, W.McCarthy, 1994.

- 101A/Ski/jap. *Skimmia japonica*. Two bushes amongst *Ulex* & *Rubus* scrub, N side of B5279 between Tyn-y-Groes and Talycafn Bridge, SH/785.719, R.Lewis, First Welsh & second British record.
- +!103/1/1x2. *Geranium* × *oxonianum* (*G. endressii* × *G. versicolor*) (Druce's Crane's-bill). Alongside footpath E of Baclaw Farm & B5106 road, c.2.5 km S of Conwy, SH/778.749, R.Lewis, 1994. Third record.
- +107/17/1. *Crithmum maritimum* (Rock Samphire) (Corn Carw'r Môr). One large plant on vertical face of wall over-looking Conwy estuary, Benarth Hall, Conwy, SH/78.77, R.Lewis, 1994.
- !110/7/1. *Lycopersicon esculentum* (Tomato) (Tomato). Several plants on sandy beach, W Shore, Llandudno, SH/769.821, W.McCarthy, 1994.
- +!118/4/1c. *Lamiastrum galeobdolon* subsp. *argentatum* (Variegated Yellow Archangel) (Marddanhadlen Felen Arianddail). Edge of footpath, Penrhyn Bay, SH/819.809, W.McCarthy, 1994.
- +118/5/2. *Lamium maculatum* (Spotted Dead-nettle) (Marddanhadlen Fraith). Bank of Afon Roe, near Pont Wgan, Conwy, SH/765.709, W.McCarthy, 1994.
- \*!118/24/1. *Rosmarinus officinalis* (Rosemary) (Rhos Mari). One large shrub on dunes, 2 km NW of Conwy, SH/759.783, R.Lewis, 1994. First VC & Welsh record.
- +!123/3/1. *Syringa vulgaris* (Lilac) (Leilac). Side of footpath in wooded area, disused quarry, Vardre, Deganwy, SH/78.79, R.Lewis 1994.
- \*!129/1/9. *Campanula portenschlagiana* (Adria Bellflower) (Clychlys Adria). Seven plants on boundary wall between roadway and railway cutting, Cadnant Park, Conwy, SH/777.777, R.Lewis, 1994. First record.
- +135/56/1. *Chrysanthemum segetum* (Corn Marigold) (Melyn yr Yd) Disturbed ground, near Tan Dderwen farm, Glanwydden, SH/816.807, W.McCarthy, 1994.
- +151/1/14. *Juncus acutiflorus* (Sharp-flowered Rush) (Brwynen Flodfain). Damp grassland, at edge of NW golf-course, Llandudno; SH/776.810, W.McCarthy, 1994.
- +152/16/57. *Carex limosa* (Bog-sedge) (Hesgen Eurwerdd). Boggy moorland between B4407 and Afon Conwy, Migneint, near Ysbyty Ifan, SH/784.444, W.McCarthy, 1994.
- \*153/12/x13/1x1. × *Festulolium loliaceum* (Hybrid Fescue) (Peisgwellt Croesryw). Pasture land, Glanwydden, near Llandudno, SH/819.807, W.McCarthy, 1994, det. T.A. Cope. First record.
- +!153/17/3. *Briza maxima* (Great Quaking-grass) (Crydwellt Mwyaf). Large stand, well naturalised in rough roadside grassland, Tregarth, SH/608.681, P.Smith, 1991.
- !158/6/2. *Kniphofia praecox* (Greater Red-hot-poker). Roadside opposite disused quarry, Bodafon, Llandudno, SH/801.816, W.McCarthy, 1994. Second record.
- 158/8/1. *Lloydia serotina* (Snowdon Lily) (Lili'r Wyddfa). Cwmglas Mawr, Snowdon, SH/6.5, D.Jones, 1994. First record at this locality for many years.
- !158/20/3. *Hyacinthoides hispanica* (Spanish Bluebell) (Clychau Cog Sbaen). +Waste ground, Deganwy, SH/77.79; +waste ground, Little Orme, SH/81.82, both G.Battershall, 1994.
- \*!158/23/2. *Muscari armeniacum* (Garden Grape-hyacinth) (Clychau Glas yr Ardd). Grassy waste ground at side of lane, Hendre, 1 km SSW of Conwy, SH/761.764, R.Lewis, 1994. First record.
- +162/10/1. *Hammarbya paludosa* (Bog Orchid) (Gefell-lys y Gors). Approx. 100 plants in flushed area with *Rhynchospora alba* and *Carex dioica*, Llanberis Pass, SH/6.5, P.I.Morris, 1991. First post 1930 record for hectad.

DENBIGH, v.c. 50 (comm. Mrs J.A.Green)

- +1/1/1. *Huperzia selago* (Fir Clubmoss) (Cnwpfwsogl Mawr). Wet flush in rocks, Craig Berwyn, SJ/075.332, J.A.Green, 1994.
- +1/4/1. *Diphasiastrum alpinum* (Alpine-clubmoss) (Cnwpfwsogl Alpaid). Roadside bank, Gorsmaenllwyd NR, SH/973.583, J.A.Green, 1994.
- 16/5/1. *Cystopteris fragilis* (Brittle Bladder-fern) (Rhedynen Frau). Rocks, Craig Berwyn, SJ/073.329, J.A.Green, 1994.
- +28/13/4. *Ranunculus sardous* (Hairy Buttercup) (Crafanc y Frân Blewog). Earth bank (sea defence), Llandulas, SH/921.781, W.McCarthy, 1994.
- +28/13/26. *Ranunculus fluitans* (River Water-crowfoot) (Crafanc Hirddail). River Alun, Rossett, SJ/382.565, G.Wynne, 1986, det. N.Holmes. First post 1950 record
- \*!29/1/9. *Berberis darwinii* (Darwin's Barberry). Roadside, Capel Garmon, SH/80.56, W.McCarthy, 1994. First record.
- !37/1/1. *Juglans regia* (Walnut) (Coeden Cnau Ffrengig). +Near farm, Pen-y-cae, SJ/273.452, BSBI Group; +orchard, Knolton Bryn, SJ/365.395, J.A.Green, both 1994.
- +46/5/3. *Stellaria pallida* (Lesser Chickweed) (Gwlydd y Tywod). Short grass, Mynydd Caedig, SH/79.69, W.McCarthy, 1994.
- +!47/5/2. *Fallopia sachalinensis* (Giant Knotweed) (Clymog Sachalin). Field, Cerrig-y-druidion, SH/93.44, W.McCarthy, 1994.
- +52/1/2. *Tilia cordata* (Small-leaved Lime) (Pisgwydden Deilen Fach). Woods, Cefn, SJ/012.708, A.Jones, 1994.
- +61/2/3. *Salix alba* (White Willow) (Helygen Wen). Streamside, Penley, SJ/406.393, K.Watson, 1994.
- +61/2/9x10. *Salix* × *sericans* (*S. viminalis* × *S. caprea*) (a hybrid willow). Streamside, Langwm, SH/975.452, J.A.Green, 1994.
- +62/14/3. *Cardamine amara* (Large Bitter-cress) (Berwr Chwerw). Wet deciduous wood, Ffrith, Wrexham, SJ/276.547, P.Day, 1994.
- +!62/31/2. *Coronopus didymus* (Lesser Swine-cress) (Olbrain Lleiaf). Paving near house, Trefnant, SJ/071.701, J.A.Green, 1994.
- +!62/38/1. *Hirschfeldia incana* (Hoary Mustard) (Cedw Penllwyd). Gravel near sea, Llandulas, SH/917.784, W.McCarthy, 1994.
- !62/40/1. *Rapistrum rugosum* (Bastard Cabbage) (Berwr Crychiog). New soil by roadside carpark, Ysbytty Ifan; +field edge, Glan Conwy, SH/802.766, both W.McCarthy, 1994. First and second records.
- 74/5/16. *Saxifraga hypnoides* (Mossy Saxifrage) (Tormaen Llydandroed). Wet cliffs, Craig Berwyn, SJ/076.333, J.A.Green, 1994. First post 1950 record.
- \*!75/3/1x2. *Spiraea* × *rosalba* (*S. salicifolia* × *S. alba*) (Intermediate Bridewort). Alwen reservoir, SH/953.534, A.Parry-Jones, 1994. First record.
- \*!75/3/1 × 3. *Spiraea* × *pseudosalicifolia* (*S. douglasii* × *S. salicifolia*). Cadney Moss, SJ/469.348, K.Watson, 1994. First record.
- \*75/8/57. *Rubus lentiginosus* (a bramble). Forestry track, Dawn, SH/85.74, G.Battershall, 1994, det. A.Newton. First record.
- +75/8/146. *Rubus bartonii* (a bramble). Limestone wood, Bryn Euryn, Colwyn Bay, SH/834.795, G.Battershall, 1994, det. A.Newton.
- 75/8/163. *Rubus vestitus* (a bramble). +Roadside hedge, Tal-y-Cafn, SH/796.725; +Colwyn Bay, SH/848.777, both G.Battershall, 1994, det. A.Newton
- +75/8/174. *Rubus wiralensis* (a bramble). Limestone outcrop, Bryn Euryn, Colwyn Bay, SH/834.795, G.Battershall, 1994, det. A.Newton.
- +75/15/2. *Agrimonia procera* (Fragrant Agrimony) (Llys y Dryw Peraroglus). Laneside bank, Nantglyn, SJ/009.636, W.McCarthy, 1994. First record since 1928.
- +!75/17/3b. *Sanguisorba minor* subsp. *muricata* (Fodder Burnet) (Gwyddlwn Tramor). Edge of forest track, Pen y cae, SJ/263.455, BSBI Group, 1994.



- \*!75/32/34. *Cotoneaster bullatus* (Hollyberry Cotoneaster). Limestone rocks, Llandulas, SH/914.777, W.McCarthy, 1994, det. J.Fryer. First record.
- +77/15/12. *Lathyrus nissolia* (Grass Vetchling) (Ytbsyen Goch). Edge of road, Hanmer by-pass, SJ/451.398, G.Emery, 1994.
- \*!77/24/1. *Spartium junceum* (Spanish Broom) (Banadl Sbaeneg). Railway bank, Llandulas, SH/894.784, G.Hutchinson, 1994. First record.
- +84/1/5a. *Epilobium tetragonum* subsp. *tetragonum* (Square-stalked Willowherb) (Helyglys Pedronglog). Damp bank. Abergele, SH/930.782, J.A.Green, 1994.
- +84/6/1x2. *Circaea x intermedia* (Upland Enchanter's-nightshade) (Gwynlys Mynydd-dir). Bank of River Dee, Llangollen, SJ208.431, J.A.Green, 1994. Second record.
- +!94/1/2. *Linum usitatissimum* (Flax) (Llin Amaeth). Dawn, Bettws yn Rhos, SH/874.732, W.McCarthy, 1994, Third record.
- 107/28/4. *Apium inundatum* (Lesser Marshwort) (Dyfrforon Leiaf). Wet lake edge, Trefechan, SJ/269/454, BSBI group, 1994.
- +!107/41/2. *Heracleum mantegazzianum* (Giant Hogweed) (Efwr Enfawr). Roadside, Nebo, SH/83.55, W.McCarthy, 1994.
- +!103/1/23. *Geranium phaeum* (Dusky Crane's-bill) (Gweddw Galarus). Lane near cottages, Maeshafn, SJ/202.610, J.A.Green, 1994.
- \*!115/1/1. *Phacelia tanacetifolia* (Phacelia). Weedy field, Dawn, Bettws yn Rhos, SH/874.733, W.McCarthy, 1994. First record.
- +116/2/1. *Echium vulgare* (Viper's-bugloss) (Glas y Graean). Wasteground, Fenns Moss, SJ/478.368, K.Watson, 1994.
- +!116/4/3. *Symphytum tuberosum* (Tuberous Comfrey) (Cyfardwf Oddfynog). Roadside, Pentrefoelas, SH/87.51, W.McCarthy, 1994.
- +118/1/5x6. *Stachys x ambigua* (*S. sylvatica* x *S. palustris*) (Hybrid Woundwort) (Briwllys Croesryw). Canal bank, Fenns Moss, SJ/475.357, K.Watson, 1994.
- +119/1/1. *Hippuris vulgaris* (Mare's-tail) (Rhawn y Gaseg). Reservoir, Trefechan, SJ/271.453, BSBI group, 1994.
- +125/1/1. *Lathraea squamaria* (Toothwort) (Dantlys). Hazel wood, Llandegla, SJ/190.532, W.McCarthy, 1994.
- +129/3/1. *Wahlenbergia hederacea* (Ivy-leaved Bellflower) (Clychlys Eiddew). Streamside, Craigfechan, SJ/158.547, J.A.Green, 1994. Second post 1970 record.
- +!131/5/1. *Leycesteria formosa* (Himalayan Honeysuckle) (Bachgen Llwm). Plas Muriau plantation, Capel Garmon, SH/80.56, W.McCarthy, 1994. Second record.
- +!131/6/4. *Lonicera xylosteum* (Fly Honeysuckle) (Gwyddfid Syth). Pwllcrocahan Woods, SH/844.786, G.Battershall, 1994.
- +!135/71/3. *Petasites albus* (White Butterbur) (Alan Bach). Under hedge in small lane, Bontuchel, SJ/094.584, I.Evans, 1994. First record since 1940.
- +135/81/2. *Bidens tripartita* (Trifid Bur-marigold) (Graban Deiran). Streamside, Mochdre, SH/819.779, W.McCarthy, 1994.
- +138/2/1. *Stratiotes aloides* (Water-soldier) (Alaw Diosgo). Farm pond, Denbigh, SJ/055.677, B.Jones, 1994.
- +152/16/39. *Carex laevigata* (Smooth-stalked Sedge) (Hesgen Ylfinog Lefn). Shady wet flush, Melin y Coed, SH/818.605, W.McCarthy, 1994.
- +158/17/1. *Paris quadrifolia* (Herb-Paris) (Cwllwm Cariad). Woods, Froncysyllte, SJ/281.410, E.Meilleur, 1994.
- +158/35/1. *Ruscus aculeatus* (Butcher's-broom) (Celynnen Fair). Hedge, Craigfechan, Ruthin, SJ/149.544, R.Whitehead, 1994.
- +162/18/5. *Dactylorhiza purpurella* (Northern Marsh-orchid) (Tegeirian y Ffign). 40-50 plants on broad verge of A55, Abergele, SH/926.781, J.A.Green, 1994.

## FLINT, v.c. 51 (comm. G.Wynne)

- +17/3/3c. *Dryopteris affinis* subsp. *borreri* [Borrer's Male-fern] (Marchredynen Feddal). Garth Wood, Pontblyddyn, SJ/282.602, J.Phillips, 1994.
- +28/13/21. *Ranunculus baudotii* (Brackish Water-crowfoot) (Egyllt y Mordir). Brackish pool, SE of Flint Castle, SJ/250.730, J.A.Green, 1994. Fourth record.
- +30/4/1. *Glaucium flavum* (Yellow Horned-poppy) (Pabi'r Môr). Waste ground near foreshore, Mostyn, adjacent to Warwick International Works, SJ/163.806, G.Wynne, 1994. Second record post 1930.
- +46/10/7a. *Sagina apetala* subsp. *apetala* (Annual Pearlwort) (Corwlyddyn Anaf-flodeuog). Bare ground, Y Graig NR, Tremeirchion, SJ/085.721, J.A.Green, 1994. Second record.
- +46/25/7. *Dianthus armeria* (Deptford Pink) (P'nigan y Porfeydd). Grass and thin scrub on steep S facing slope on old limestone quarry waste, Coed-y-felin NR, Hendre, SJ/196.678, J.A.Green, 1994. First record post 1930.
- +62/2/1. *Descurainia sophia* (Flixweed) (Berwr y Fam). Path, near sand dunes, Point of Air, SJ/120.849, J.A.Green, 1994. Second record post 1970.
- \*162/38/1. *Hirschfeldia incana* (Hoary Mustard) (Cedw Penllwyd). Waste ground S of railway, Rhyl, SJ/003.805, J. A. Green, 1994; +waste ground, old colliery site, Knowle Hill, Buckley, SJ/289.644, J.Phillips, 1994. First and second records.
- \*175/19/15. *Alchemilla mollis* (a lady's-mantle). Grassy road verge, 100 m from houses, Burntwood Pentre, Buckley, SJ/292.648, J.Phillips, 1994. First record.
- +175/22/3. *Prunus cerasifera* (Cherry Plum) (Gaugeiriosen). Hedge, Silverdale Meadow, N of Gwern Estyn, Hope, SJ/320.583, J.Phillips, 1994. Third record.
- +175/32/16. *Cotoneaster integrifolius* (Small-leaved Cotoneaster) (Cotoneaster Dail Bach). Disused limestone quarry, Ffrith, SJ/285.554, J.Phillips, 1994.
- \*175/32/40. *Cotoneaster sternianus* (Stearn's Cotoneaster). Disused limestone quarry, houses nearby, Tremeirchion, SJ/081.732, J.Phillips, 1994, det. G.Hutchinson. First record.
- +75/35/8. *Crataegus laevigata* (Midland Hawthorn) (Draenen Ysbyddaden). Hedge on minor road, Tremeirchion, SJ/074.717, J.A.Green, 1993. Second record and first post 1930.
- +103/1/15. *Geranium pusillum* (Small-flowered Crane's-bill) (Pig yr Aran Mânflodeuog). Floor of disused limestone quarry, Y Graig, Tremeirchion, SJ/085.719, J.A.Green, 1994.
- +116/6/4. *Anchusa arvensis* (Bugloss) (Bleidd-drem). Waste ground Shotton Steelworks, SJ/298.709, J.Phillips, 1994.
- +142/1/7. *Potamogeton alpinus* (Red Pondweed) (Dyfrllys Coch). Pond in disused limestone quarry, just SE of Rhewl Farm, Llanfynydd, SJ/281.560, J.Phillips, 1994, det. N.Holmes & C.D.Preston. Second record.
- \*153/12/7g. *Festuca rubra* subsp. *megastachys* (a red fescue). Disused railway, Meliden, SJ/058.803, J.A.Green, 1993, det. C.A.Stace. First record for subsp.
- +162/20/3. *Orchis morio* (Green-winged Orchid) (Tegeirian y Waun). Limestone grassland, 2 plants in flower, Gop, Trelawnyd, SJ/08.79, B.Greenwood, 1994.

## ANGLESEY, v.c. 52 (comm. R.H.Roberts)

- 57/1/7. *Viola lactea* (Pale Dog-violet) (Millyn Gwelw Grugog). Limestone scrub, Y Bonc, Marianglas, SH/504.839, A.Turner, 1994, conf. R.H.Roberts.
- \*62/22/2. *Erophila glabrescens* (Glabrous Whitlowgrass) (Bystwn Llyfn). Sand dunes, Aberffraw, SH/35.68, J.Lowell, 1994. First record of segregate.
- +64/1/1a. *Empetrum nigrum* subsp. *nigrum* (Crowberry) (Creiglys). Maritime heath, Ynys Llanddwyn, SH/3.6, M.&L.Howe, 1994. Second record and first post 1930.
- +75/8/65. *Rubus monensis* (a bramble). Sandy woodland, Newborough Forest, SH/40.60, G.Halliday, 1994, det. A.Newton.
- \*175/8/134. *Rubus armeniacus* (Giant Blackberry). Car park, Beaumaris, SH/60.76, D.Earl, 1994. First record.

