

Progress towards a third Atlas of Britain and Ireland



Pete Stroh

Scientific Officer, Atlas Coordinator, 'England Officer'

Atlas records - Ireland

891, 064 = number of records since 2000

113, 871^{*} = records collected in 2015

141^{**} = number of BSBI members in Ireland

*albeit 80, 000 are from Wexford!

**England (1,793), Scotland (299), Wales (190)

Atlas 2020 - the basics

- Third atlas of the British & Irish flora
- Systematic recording at tetrad precision or better across GB and Ireland
- Updated distribution maps for native and introduced taxa
- How has our flora changed?
- Why has our flora changed?

What is required by 2020?

- Minimum sample coverage of 3 tetrads (Ireland) or 12 monads per hectad, although note this is a minimum!
- National and county rare/scarce/threatened species **recorded at ≤ 100 m resolution**
- Data uploaded to DDb – little and often is preferable **if at all possible, but if there is a backlog we're not fussy!** tom.humphrey@bsbi.org
- Verification of records in the DDb – automated whenever possible

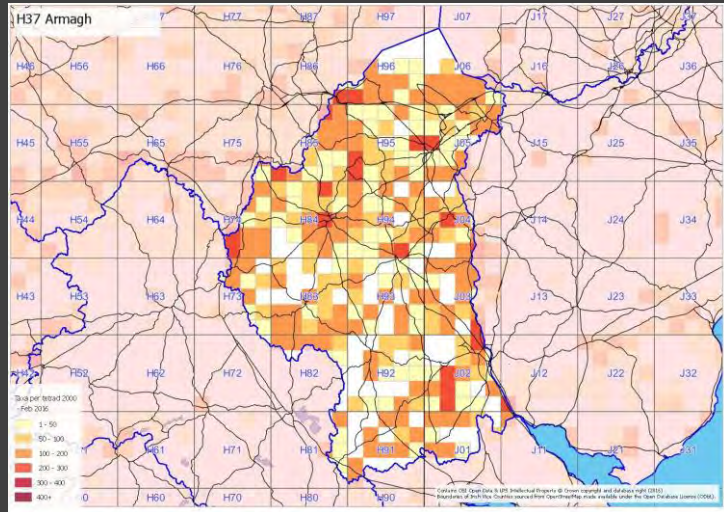
What will the Atlas look like?

- Personal preference is for a book (inc. CD) & online maps
- Book to focus on our changing flora– telling the story using example species, maps (not just hectad), photos, etc.
- **Online ‘dot’ maps (fixed at the end of 2019) + potential for relative abundance (tetrad frequency), tetrad maps for Atlas date class, recorder effort, abundance for rare, etc.**
- Discussions with CEH next week to start developing methods and running test analyses
- Options to Council in April, followed by wider discussion with VCRs, members and stakeholders

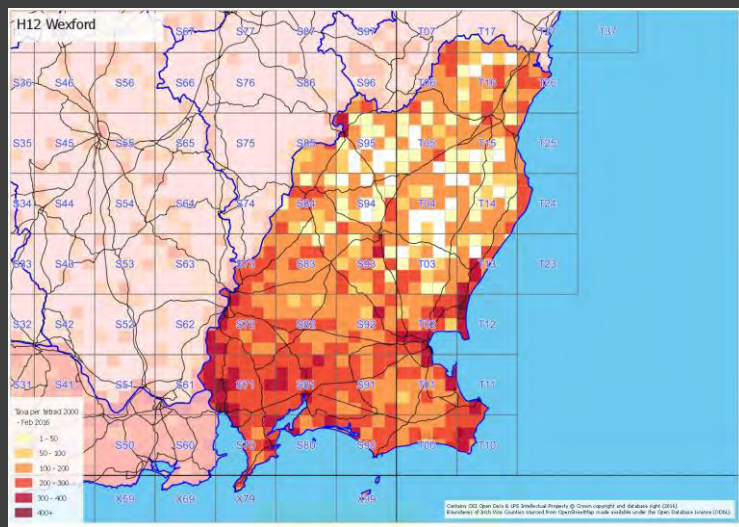
Guidance for recorders

- Atlas 2020 web page
 - Updated Atlas 2000 booklets
1. *An instruction booklet for members and VCRs*
 2. *A beginners guide to recording*
 3. *Where and what do we record*
 4. *Notes on identification works and difficult or under-recorded taxa*
- **Also to follow...** ‘Fern Crib’, and Handbooks on Oenothera, Viola and Euphrasia
 - Updated coverage maps by VC

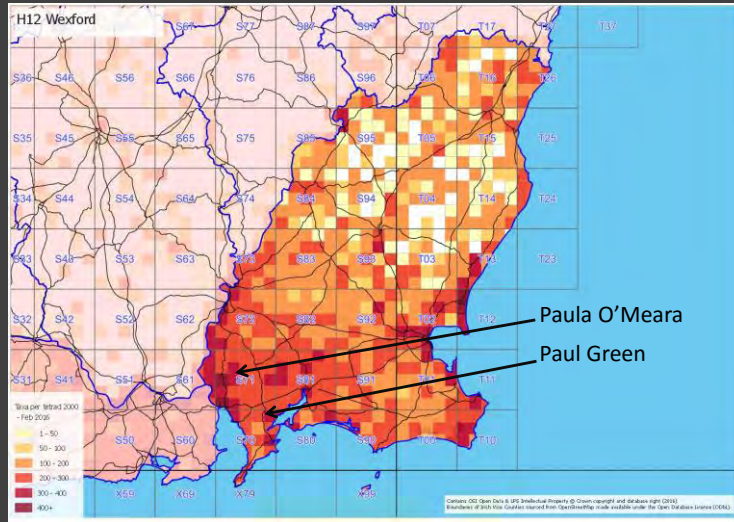
2000+ coverage maps (QGIS)



2000+ coverage maps (QGIS)



2000+ coverage maps (QGIS)



1987-99 vs. 2000+ no. species/hectad



1987-1999



2000-2015

N.B. If records are not in the DDb they won't appear on the map!

Four years to go...

- Data entry/submission
- Coverage maps – **focus on 'empty' hectads**
- WFS – Paul Green
- Cross-county meetings – sharing expertise and botanists!
- Think about planning BSBI field meetings in under-recorded areas
- Complementary projects – County Flora or Rare Plant Register
- Individual projects – single species or groups
- Rough Crew – see Maria

But most important of all....



thank you and have fun!