

A close-up, high-angle photograph of a dense field of yellow dandelion flowers. The flowers are in various stages of bloom, with some fully open and others as buds. The green leaves are interspersed among the flowers, creating a vibrant, textured background. The text is overlaid in the center of the image.

3. Introduction to dandelion characters. BSBI 2018

Tim Rich

- may have to look carefully at more than one leaf etc.
- some take a lot of experience to use
- can change through season



Base of petioles – outside at base

- white vs pink/red
- pink coloration often develops more when dried



- Petioles winged at base
- sometimes narrowly so



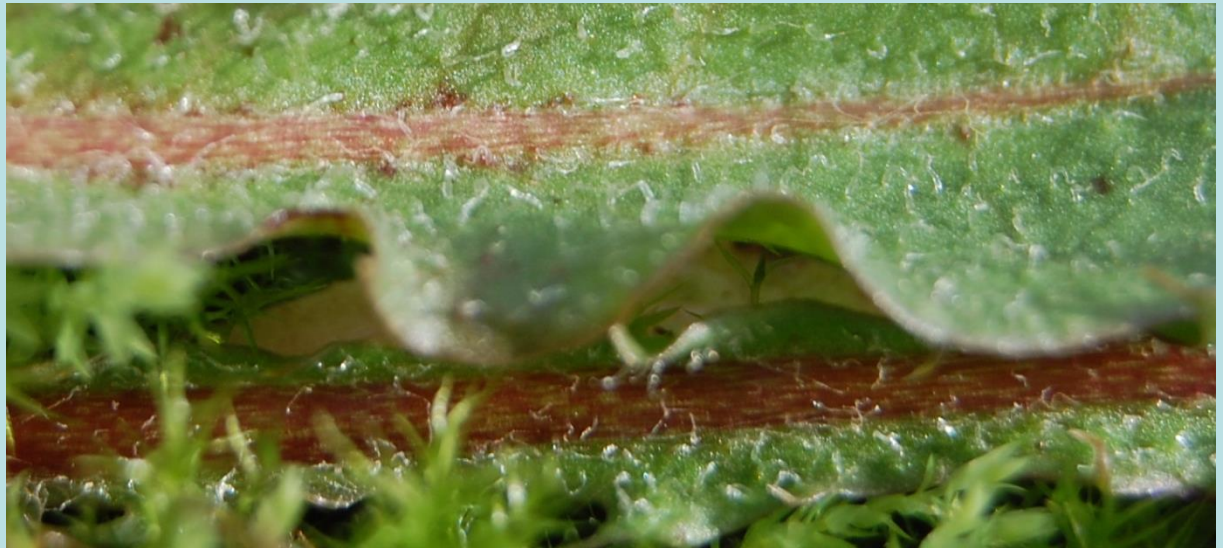
Interwoven midrib

Sections:

- Celtica
- Hamata
- Spectabilia
- Naevosa

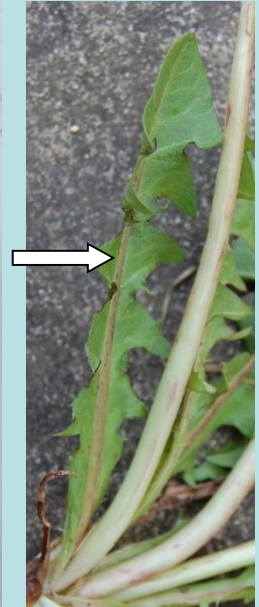


sahlinianum



palmeri

Petiole white/green, midrib darker



Petiole and midrib white/green

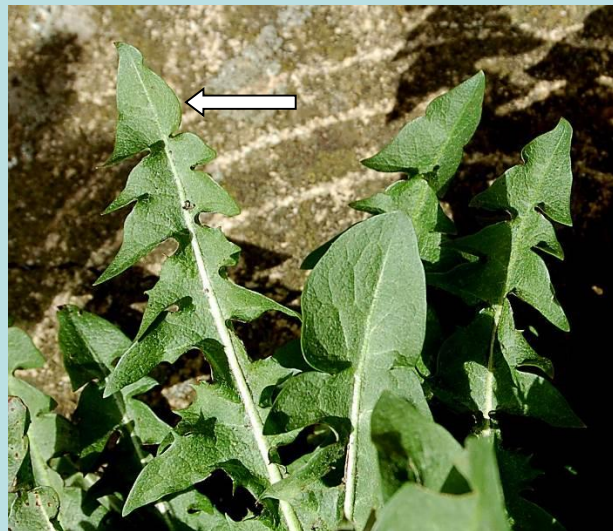


Terminal lobes

- very important, select leaves with good endlobes



Some subdivisions of endlobes rounded



Heterophyllous - with endlobes
of outer leaves markedly
different to inner leaves



Leaves with black spots

- spring leaves (may be absent in summer)



Interlobes
suffused blackish



Bracts have many characters:

- size – length and width (more variation than in handbook)
- shape – broad, narrow
- held in mature bud (appressed to reflexed, sometimes twisted)
- colour
- borders



Capitulum width

- measure when fully open
- often more variation than given in handbook

Ligule stripe colour

- surprisingly hard to decide which colour is which!



Inrolled ligules (not opening properly)



Stigma colour (same as ligule=yellow, discoloured, blackish, orange)

- Occasionally colour obscured by abundant pollen



Pollen

- X10 lens at least
- Varies in quantity
- Sometimes washed off by rain



Achenes

- size (body, cone)
- colour - hints in young heads, best in mature
 - fade in herbarium specimens
- shape to some extent and spines

