

# Where are they now? Refinding Black Poplars in the NatHistCam area.



Roger Horton (rogerhorton@zoho.com)

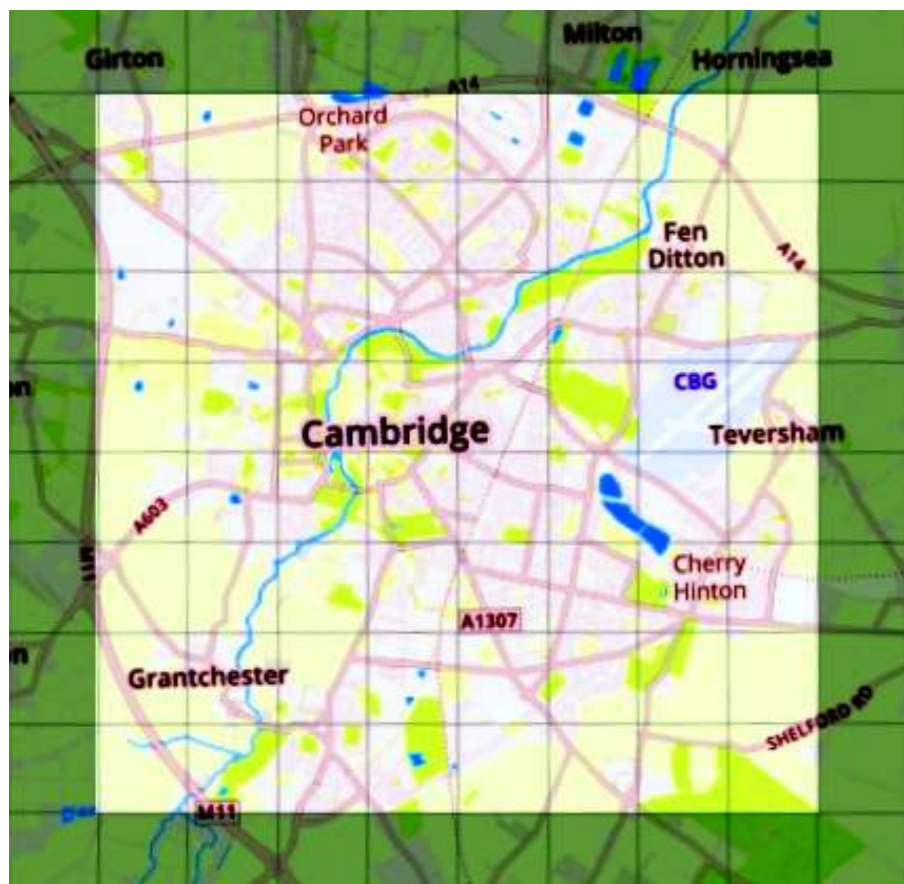
Cambridge Natural History Society – NatHistCam Project



## NatHistCam

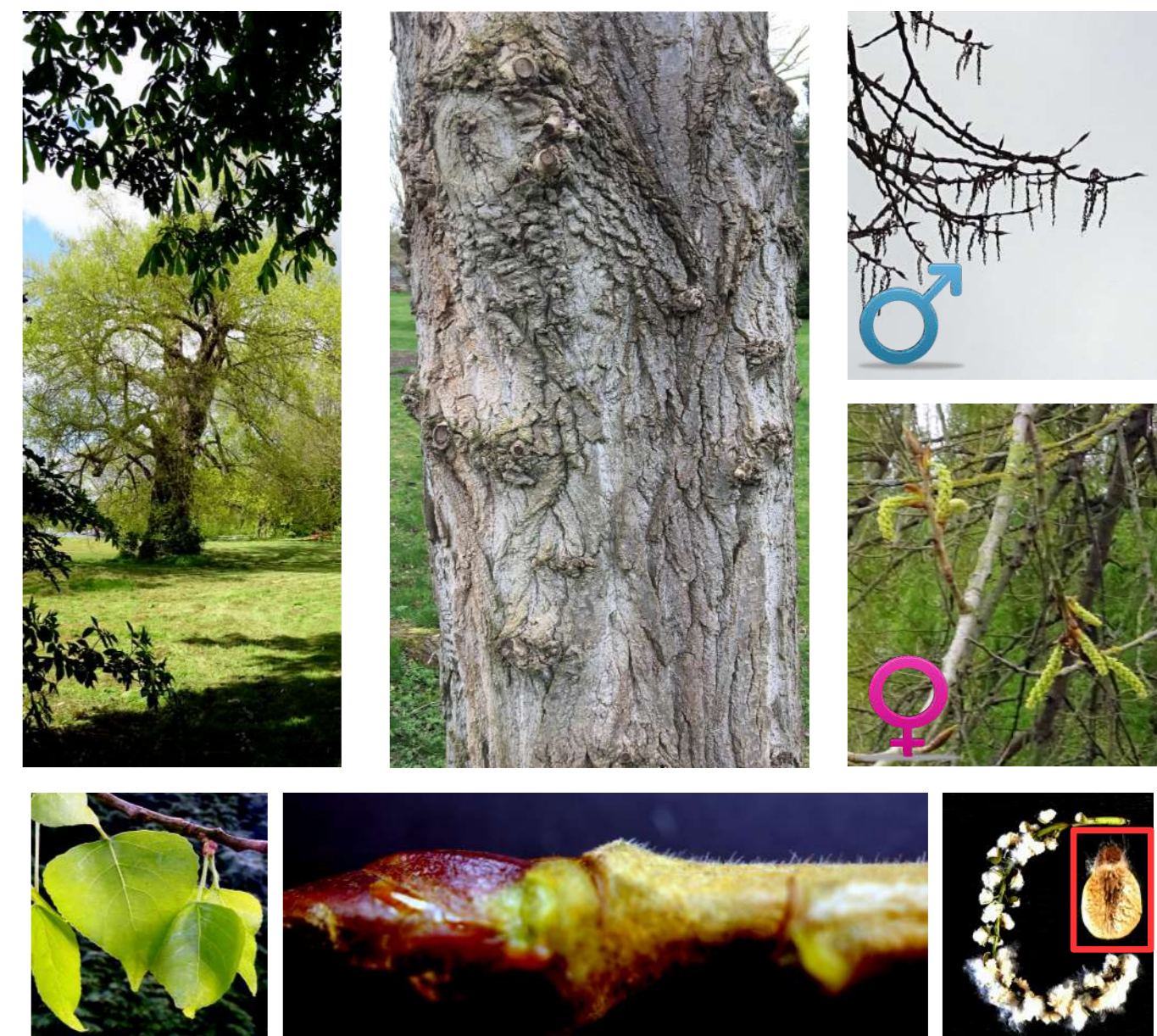
a project to study the natural history of Cambridge, based on an 8km X 8km square roughly centred on Mill Rd Cemetery. Aims:

- create a snapshot of the flora & fauna of Cambridge City and its immediate environs in a historical context
- increase public awareness of the diversity of plants, animals & fungi in the city

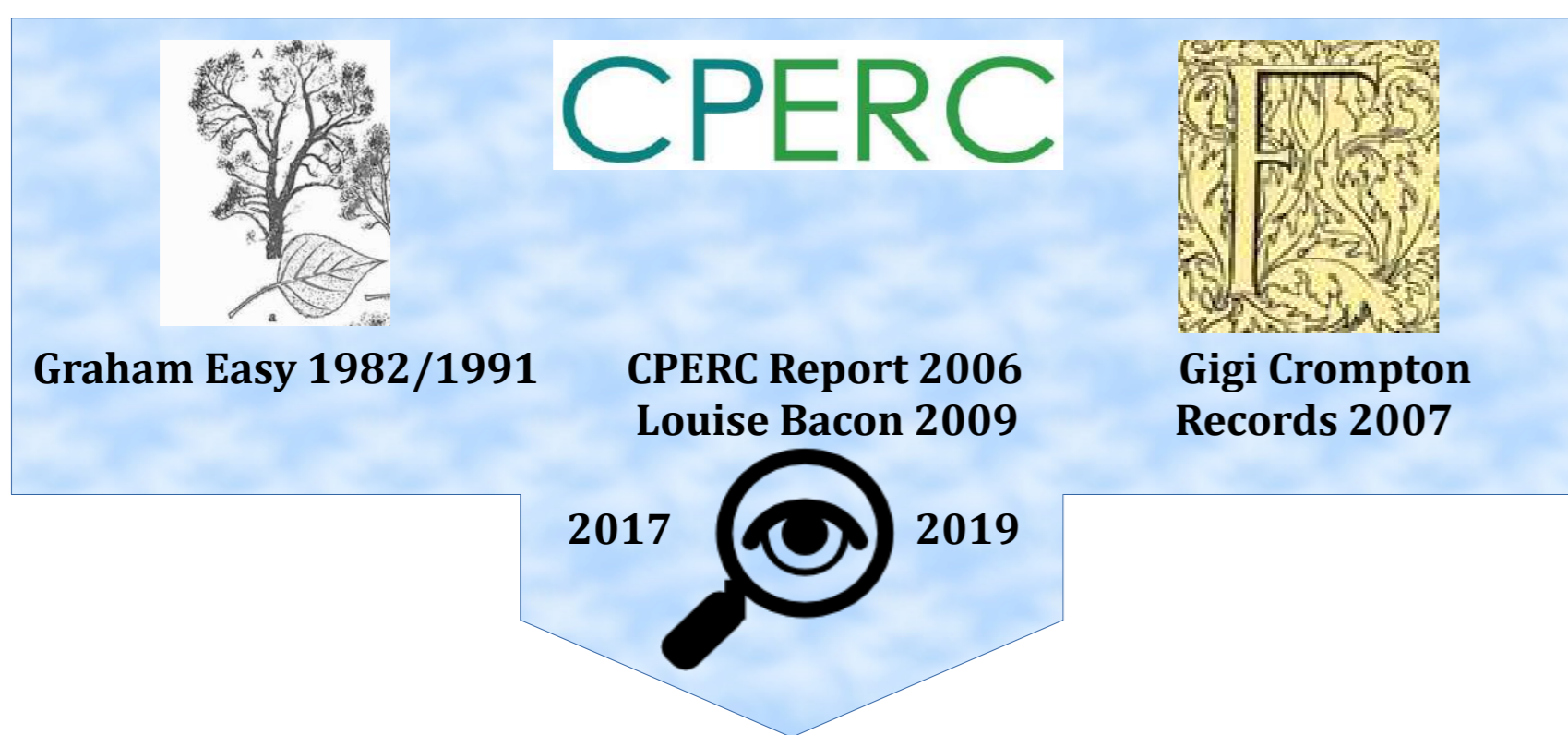


## Native Black Poplar ID

*Populus nigra betulifolia*: "England's rarest tree". Frequently found in and around Cambridge. A dioecious species, ♀ trees are particularly rare. NatHistCam: chance to re-examine distribution in city.



## Sources of Information

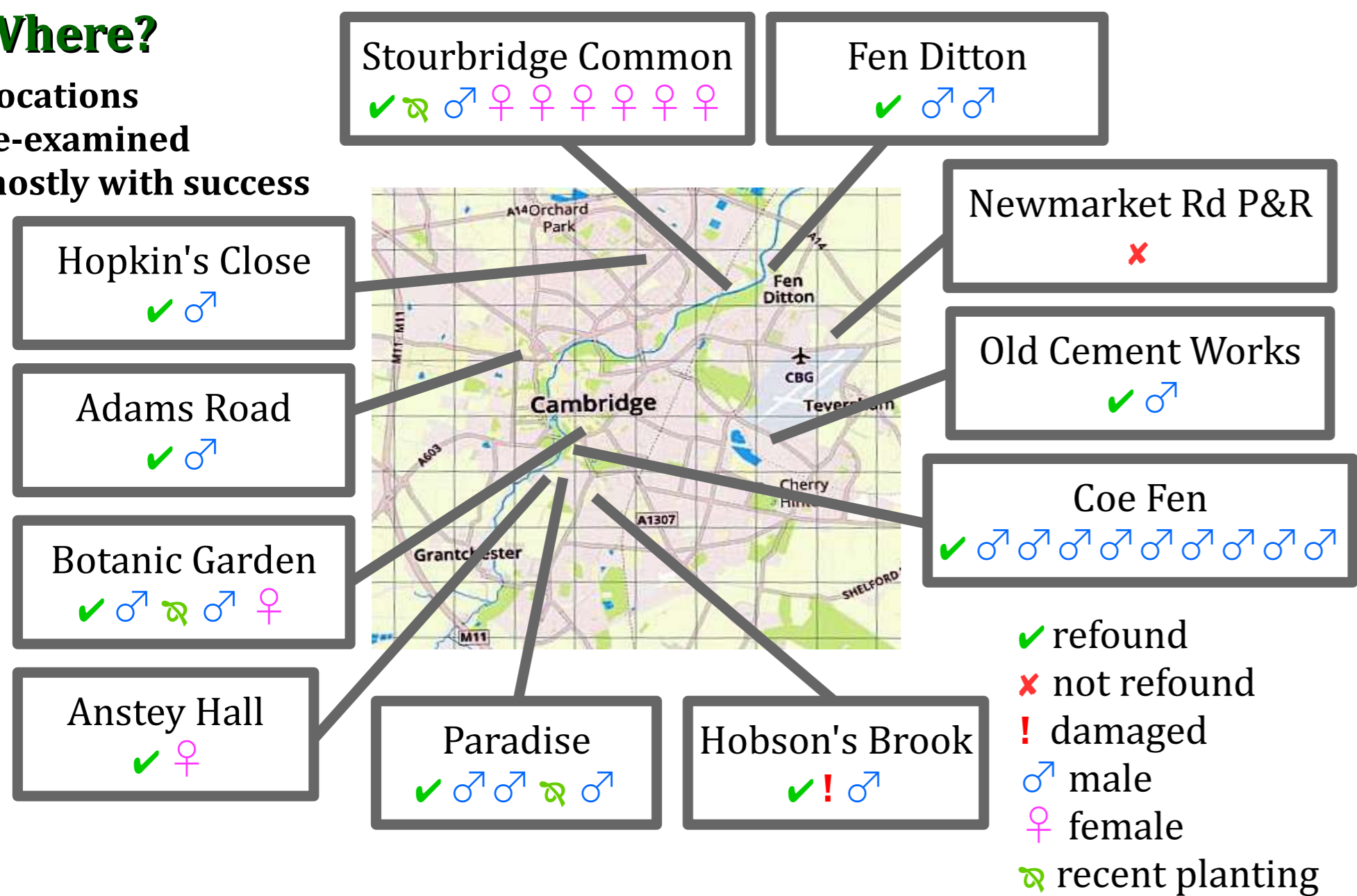


## NatHistCam Database

Graham Easy 1982 Black poplars in Cambridgeshire. Nature in Cambridgeshire 25 45-50.  
Graham Easy 1991 Black Poplars *Populus nigra* in Cambridgeshire. Nature in Cambridgeshire 33 45-49.  
CPERC 2006 Black Poplars (*Populus nigra betulifolia*) in Cambridgeshire: report.  
Gigi Crompton 2007 Cambridgeshire Flora Records (on-line database: <http://www.cambridgeshireflora.com/>)  
Louise Bacon 2009 Black Poplars (*Populus nigra betulifolia*) in Cambridgeshire. Nature in Cambridgeshire 51 69-53.

## Where?

Locations re-examined mostly with success



## Internet Resources

Follow further NatHistCam progress – Black Poplar & all other taxa - with these URLs or scan QR codes with your smart phone:

NatHistCam www

<http://www.nathistcam.org.uk/>

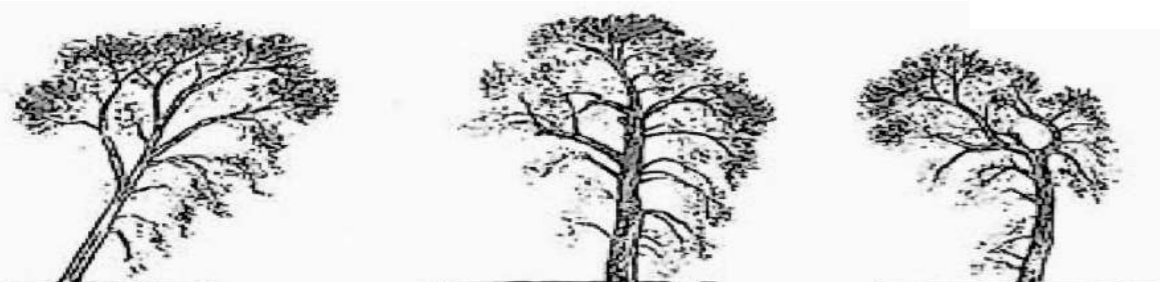


NatHistCam twitter

<https://twitter.com/NatHistCam>

CPERC records

(including the NatHistCam database)  
<http://www.cperc-record.org.uk/>



## Planted trees

### Botanic Garden

The Garden has young, planted specimen trees, both male and female.



### Stourbridge Common

Old, lost trees replaced by planting of mixed species, including male & female Black Poplars with willows.



## Old trees

### Fen Ditton

Two fine specimens still stand in the Paddock, below the church, by the River Cam (below and top).



### Hopkin's Close

A single tree survives in a housing estate on former Cambridge University Field Unit, or "Anthrax Site".



### Hobson's Brook

An old tree now fallen leaving just two sprouting stumps.



## Surprises

At the Old Cement Works there is just one survivor.



Next to the Fen Causeway a row of nine trees have appeared where one was previously reported.

