



V.C. H5 EAST CORK

Ballyannan Woods

V.C. H5 EAST CORK



Ballyvergan Marsh

V.C. H5 EAST CORK

WHAT WILL I BE TALKING (very fast) ABOUT?

- ME – FINBARR WALLACE
- ATLAS 2020 IN H5 - CURRENT STATUS
- ATLAS 2020 IN H5 - COVERAGE / RE-FIND ISSUES
- ATLAS 2020 IN H5 - PLANNING TIPS



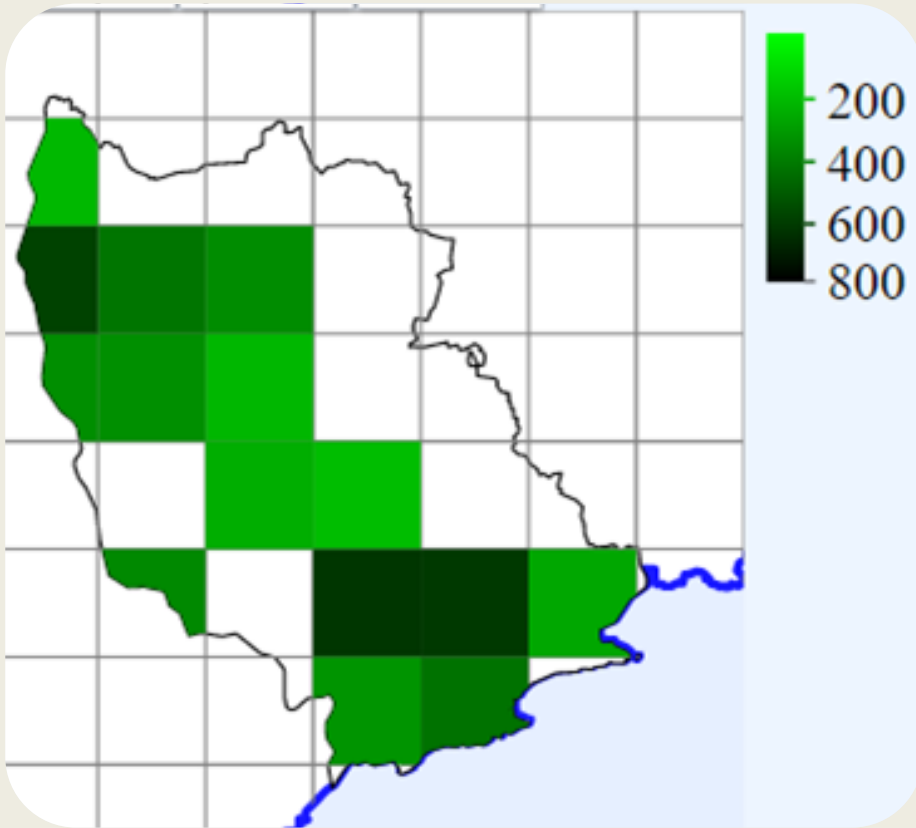
Ophrys apifera
Industrial Estate,
Midleton

Photo M.B. O'Sullivan

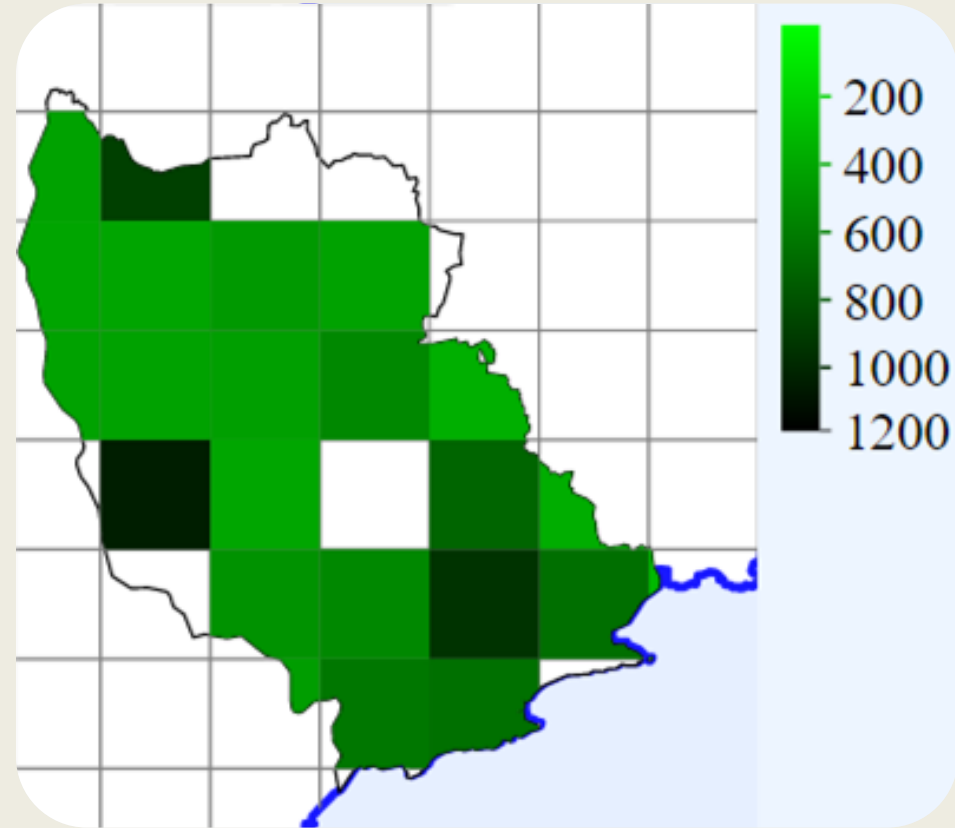
V.C. H5 EAST CORK



V.C. H5 EAST CORK

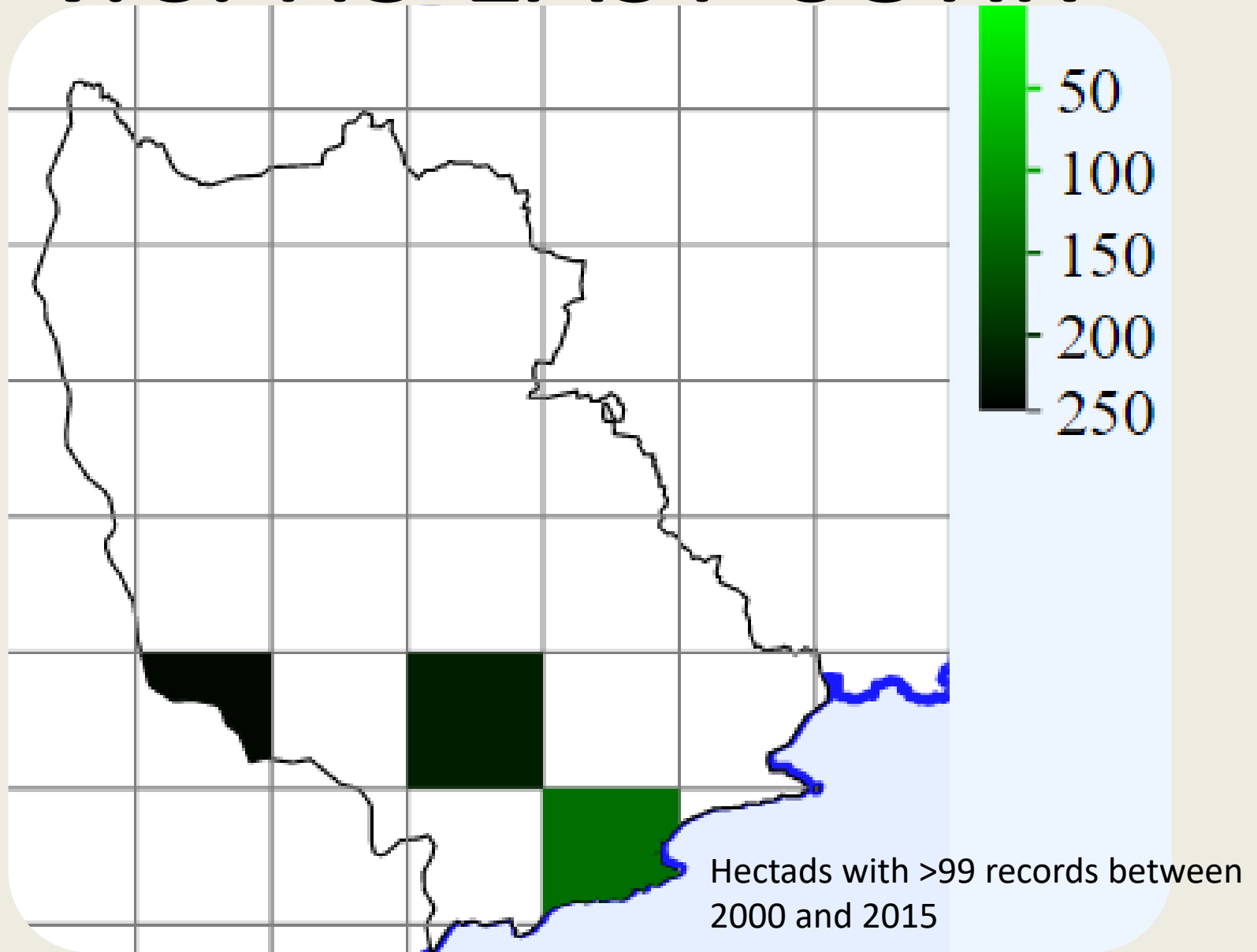


Hectads with >199 records since 2000



Hectads with >199 records from 1987 to 2000

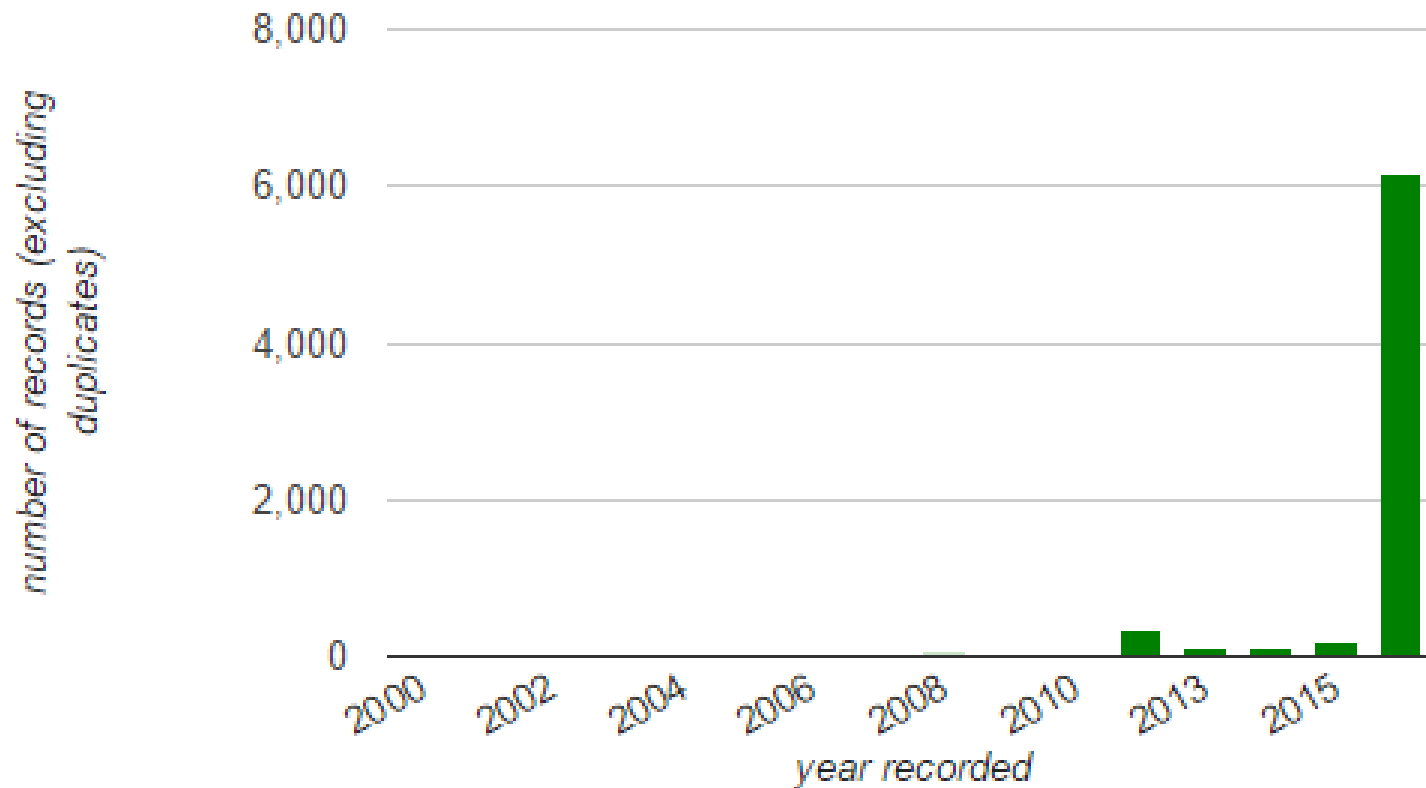
V.C. H5 EAST CORK



V.C. H5 EAST CORK

Recording since 2000

Year-by-year breakdown of recording since 2000.



V.C. H5 EAST CORK

| | A | B | C | D | E | F | G |
|----|---|----------|-------|------|--------|------|------------------------------|
| 1 | nameString | pre 2000 | 2000- | IBN | monads | freq | IBN COMMENT |
| 2 | <i>Veronica anagallis-aquatica</i> x <i>catenata</i> = <i>V. x lackschewitzii</i> | 2 | 0 | | ,R6500 | 2 | |
| 3 | <i>Rosa canina</i> x <i>tomentosa</i> = <i>R. x scabriuscula</i> | 2 | 0 | | ,R6800 | 2 | |
| 4 | <i>Mentha arvensis</i> x <i>spicata</i> = <i>M. x gracilis</i> | 2 | 0 | | ,R6802 | 2 | |
| 5 | <i>Populus nigra</i> subsp. <i>betulifolia</i> | 2 | 0 | | R6203 | 2 | |
| 6 | <i>Rosa rubiginosa</i> x <i>sherardii</i> = <i>R. x suberecta</i> | 1 | 0 | | R6800 | 1 | |
| 7 | <i>Rosa agrestis</i> | 1 | 0 | R60? | | 1 | Doneraile to Kilavullen Road |
| 8 | <i>Rosa rubiginosa</i> | 1 | 0 | R60? | | 1 | Doneraile to Kilavullen Road |
| 9 | <i>Achillea millefolium</i> | 1 | 0 | | | 1 | |
| 10 | <i>Agrimonia eupatoria</i> | 1 | 0 | | | 1 | |
| 11 | <i>Agrostis canina</i> | 2 | 0 | | | 2 | |
| 12 | <i>Aira caryophyllea</i> | 1 | 0 | | | 1 | |
| 13 | <i>Aira praecox</i> | 1 | 0 | | | 1 | |
| 14 | <i>Ajuga reptans</i> | 2 | 0 | | | 2 | |
| 15 | <i>Allium scorodoprasum</i> | 1 | 0 | | | 1 | |
| 16 | <i>Allium triquetrum</i> | 1 | 0 | | | 1 | |

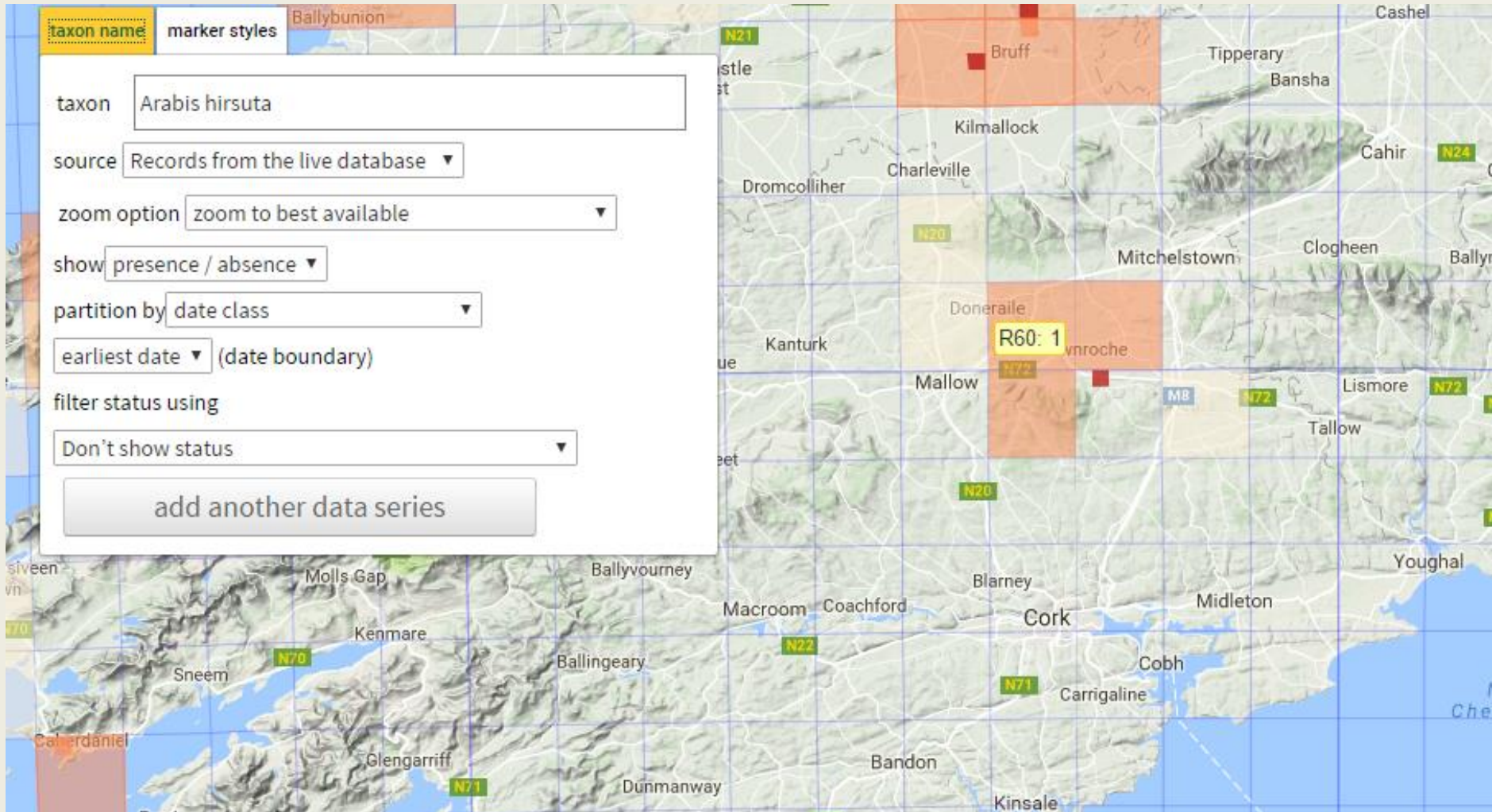
In R60, of 238 taxa not yet re-found from Atlas 2000 very little precise locational info.

V.C. H5 EAST CORK

| 1 | nameString | pre 2000 | 2000- | IBN | monad freq | IBN COMMENT |
|----|---|----------|-------|-----|------------|-------------|
| 20 | <i>Arabis hirsuta</i> | 1 | 0 | | 1 | |
| 21 | <i>Arctium minus</i> | 1 | 0 | | 1 | |
| 22 | <i>Arctium minus</i> subsp. <i>minus</i> | 1 | 0 | | 1 | |
| 23 | <i>Arctium nemorosum</i> | 1 | 0 | | 1 | |
| 24 | <i>Arenaria leptoclados</i> | 1 | 0 | | 1 | |
| 25 | <i>Arenaria serpyllifolia</i> subsp. <i>serpyllifolia</i> | 1 | 0 | | 1 | |
| 26 | <i>Artemisia vulgaris</i> | 1 | 0 | | 1 | |
| 27 | <i>Avenula pubescens</i> | 1 | 0 | | 1 | |
| 28 | <i>Berberis vulgaris</i> | 1 | 0 | | 1 | |
| 29 | <i>Berula erecta</i> | 1 | 0 | | 1 | |
| 30 | <i>Betula pubescens</i> subsp. <i>pubescens</i> | 1 | 0 | | 1 | |
| 31 | <i>Bidens tripartita</i> | 1 | 0 | | 1 | |
| 32 | <i>Blackstonia perfoliata</i> | 1 | 0 | | 1 | |
| 33 | <i>Blechnum spicant</i> | 1 | 0 | | 1 | |
| 34 | <i>Brassica rapa</i> | 1 | 0 | | 1 | |
| 35 | <i>Briza media</i> | 1 | 0 | | 1 | |
| 36 | <i>Bromopsis ramosa</i> | 1 | 0 | | 1 | |
| 37 | <i>Bromus hordeaceus</i> | 1 | 0 | | 1 | |
| 38 | <i>Butomus umbellatus</i> | 1 | 0 | | 1 | |

NOTE 170 re-finds.

V.C. H5 EAST CORK



V.C. H5 EAST CORK

taxon name marker styles Abbeyfeale N21

taxon

source

zoom option

show

partition by

(date boundary)

filter status using

Kilmallock

Mitchelstown

Doneraile

R60: 1

Tallow

Lisr

Blarney

Cork

Midleton

Cobh

Carrigaline

Ballingeary

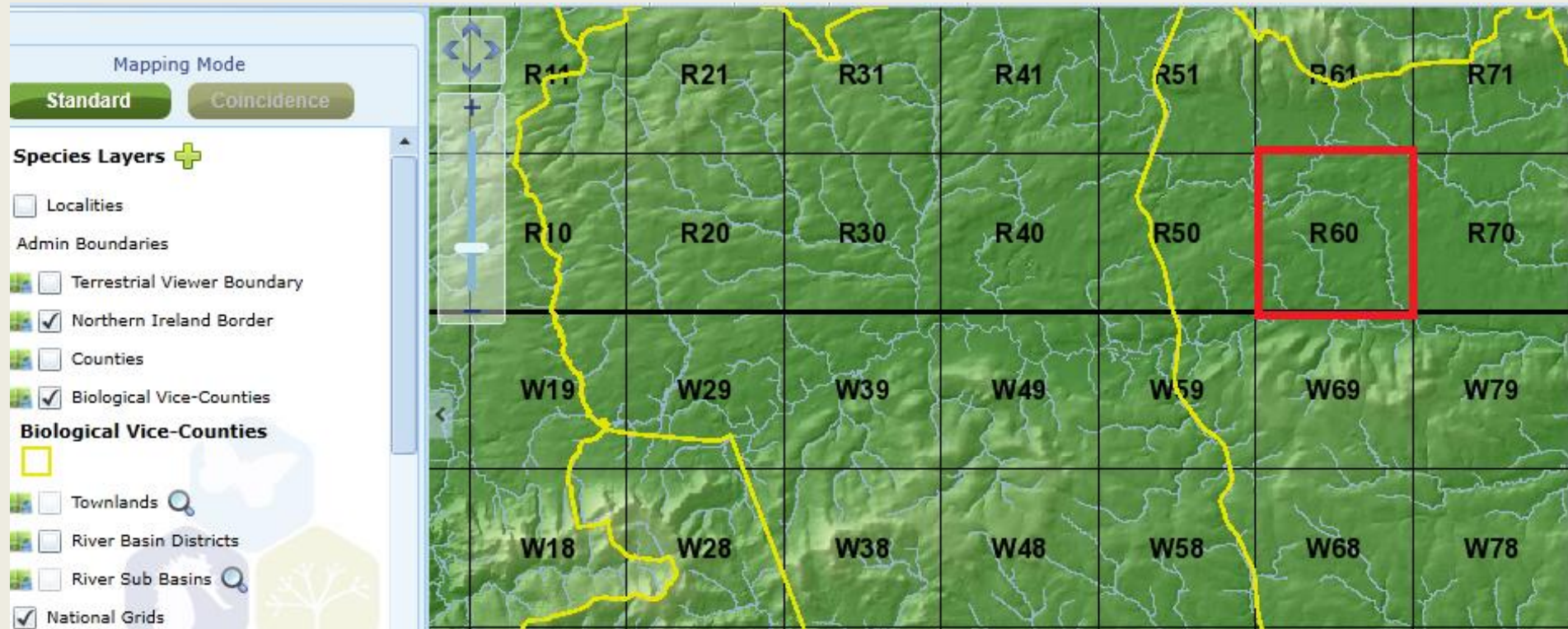
Glengarriff

Dunmanway

Bandon

Kinsale

V.C. H5 EAST CORK



V.C. H5 EAST CORK



V.C. H5 EAST CORK

The image displays a GIS software interface with the following components:

- Menu Bar:** Menu, Home, Analysis, Search, Reporting, Advanced Reporting
- Navigation Tools:** Zoom In, Zoom Out, Pan (highlighted), Full Extent, Reset Extent, Previous Extent, Next Extent, Magnifier
- Functionality Tools:** Point Identify, Print Map, Add a species, Date Filter
- Layers Panel:**
 - Mapping Mode: Standard (selected), Coincidence
 - Bat Landscapes
 - BirdWatch Ireland
 - Forestry (checked)
 - Protected Areas
 - Transport (checked)
 - Rivers & Lakes (checked)
 - Geology
 - Base Maps
 - OSi Discovery
 - OSi Ortho
 - OSi Base Map
 - Base Map
- Map View:** A topographic map showing a grid of 100m squares. A vertical red line is drawn through the grid. The map includes labels for various locations and grid coordinates:
 - Grid coordinates: F5906, R6006, R6106, R6206, F5905, R6005, R6105, R6205, R5904, R6004, R6104, R6204
 - Locations: Lishadough, Aghnacree, Dromdeer West, Dromdeer, Glenor North, Powerstown, Church, Moated Site
 - Other labels: Corridor Noonan's Cross Rds, Dromdeer 133, 04, 05, 04

V.C. H5 EAST CORK

The image shows a screenshot of a GIS software interface. At the top, there is a toolbar with various navigation and utility tools. Below the toolbar is a 'Layers' panel on the left, and a map view on the right. The map view shows a satellite-style map with several colored overlays. A red rectangle highlights a specific area on the map, and the text 'R6005' is visible within this area.

Navigation Tools: Zoom In, Zoom Out, Pan, Full Extent, Reset, Previous Extent, Next Extent, Magnifier, Point Identify, Print Map, Add a species, Date Filter.

Layers Panel:

- Mapping Mode: Standard (selected), Coincidence
- Commonage 2011
- Seacliffs
- Inventory of Coastal Lagoons 2011
- Margaritifera Sensitive Areas
- Saltmarsh Monitoring Project 2011
- Fossitt Habitats
- Fossitt Wetlands
- Bat Landscapes
- BirdWatch Ireland
- Forestry (checked)
- Protected Areas
- Transport (checked)

Map View: The map shows a rural landscape with fields and roads. A red rectangle highlights a central area. The text 'R6005' is overlaid on the map within the red rectangle.

V.C. H5 EAST CORK

Instructions: Find a grid reference on the Google map by simply right-clicking on the map. Enter a location search below.

Location (Road , Town)

Grid Reference

X (Easting) Y (Northing)

Lat Long

V.C. H5 EAST CORK

Instructions: Find a grid reference on the Google map by simply right-clicking on the map. Enter a location search below.

Location (Road , Town)

Grid Reference

X (Easting) Y (Northing)

?

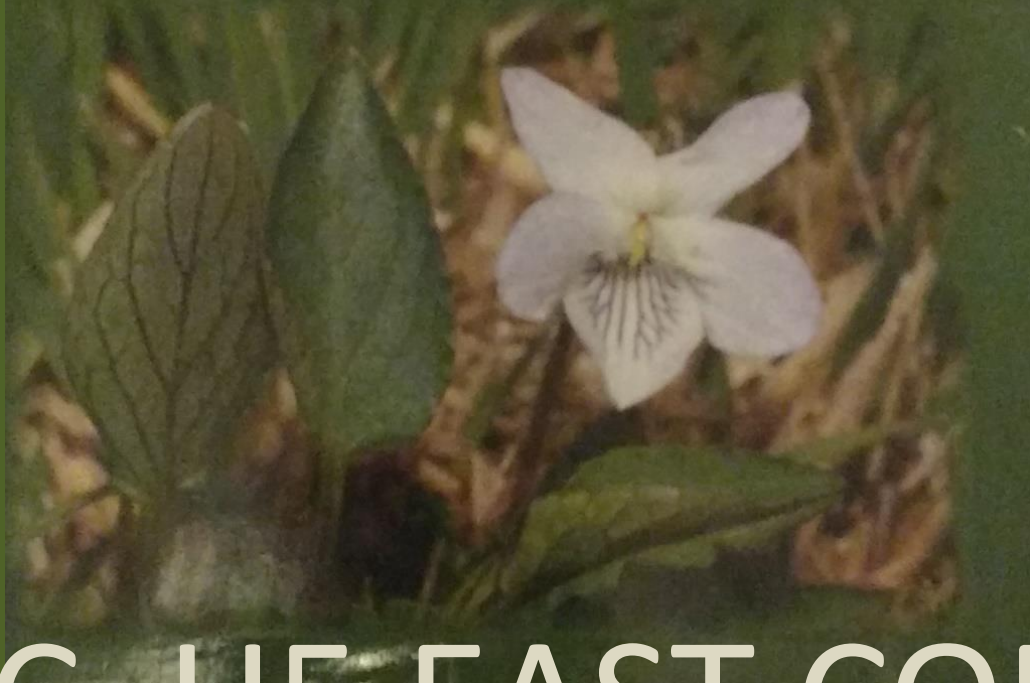
Lat Long

?



TONY O'MAHONY

Wildflowers of
Cork City
and County



V.C. H5 EAST CORK

The details of the websites used as examples when looking at planning for Atlas 2000 are as follows:

The **National Biodiversity Data Centre** homepage url is:

<http://www.biodiversityireland.ie/>

or just search for 'national biodiversity data centre Ireland' online.

When you get there, scroll down the page to 'Biodiversity Maps' and click to get to the maps section.

Note that the mapping architecture needs Silverlight to operate properly. I am finding that at the moment Internet Explorer is the only browser that supports this. You will be prompted to install Silverlight if you do not already have it. If you do not have Internet Explorer you can download it from Microsoft. Not sure how this works on Mac.

The other website I used as an example was **Irish Grid Reference Finder** and the homepage url for that is : <http://irish.gridreferencefinder.com/> or just search for 'Irish grid reference finder ' online.

There are other mapping sites. These two are just a sample. I really like the OSI (Ordnance Survey Ireland) historic maps functionality to look at historic coverage e.g. of woodland.