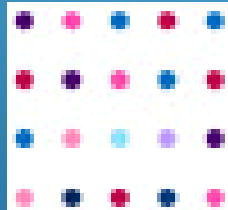


MapMate Overview

Jim McIntosh, BSBI Scottish Officer



What is MapMate?

- A program that can be downloaded onto a PC
- That is a simple way to digitise paper **records**
- In our case, records of Vascular Plants (flowering plants, conifers, ferns, fern allies) and Stoneworts
- That allows the records to be easily viewed, edited, stored, mapped, analyzed and shared...
- ... and specifically shared with the BSBI MapMate hub which updates the BSBI Database within an hour.



Who can get MapMate?

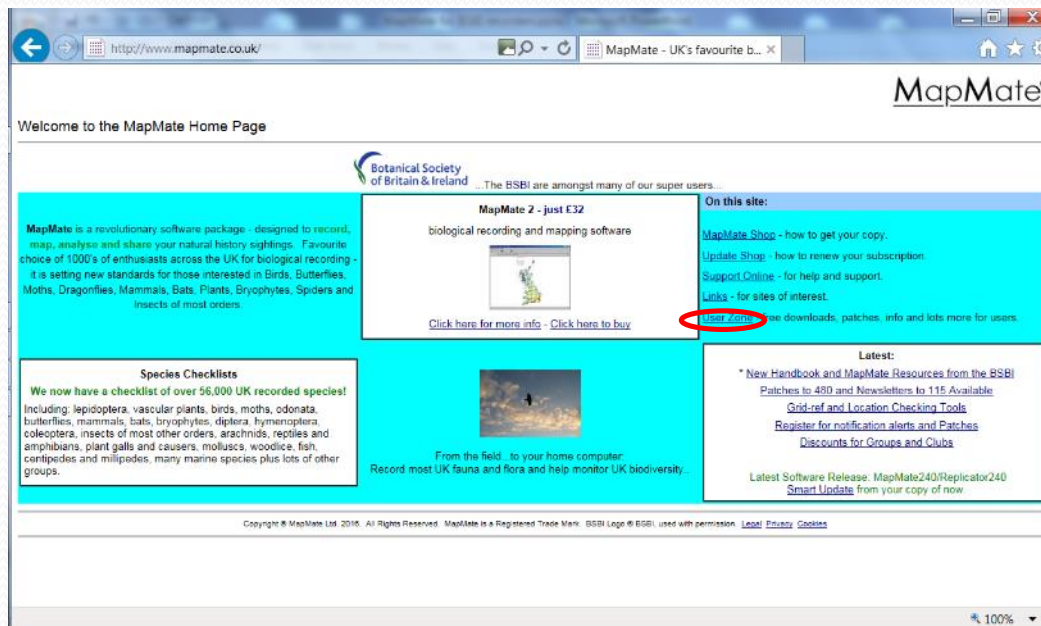
- All BSBI Recorders are very **welcome** to have a copy – which we will supply for free.
- Anyone contributing records to a BSBI Recorder may be nominated by the Recorder for a free copy.
- Anyone volunteering to digitise records for a BSBI Recorder may also be nominated for a free copy.

We pay the annual licence for all BSBI supplied copies, and can add anyone to our group licence who has come to the BSBI already with MapMate.



Where is MapMate?

- Well apart from on your PC – the [MapMate](http://www.mapmate.co.uk/) website has much support & advice.
- Users *must* register before records can be exchanged with other MapMate users and updates (patches) received.



When do you use MapMate?

- Recorders should use it as soon after each field recording excursion as possible, to enter the records collected.
- Whenever MapMate notifies you that another MapMate user has sent you MapMate records.
- Whenever MapMate itself notifies you that updates (patches) are available.
- To send records to the hub after each data entry session
- Regularly to back-up your MapMate database!



When wouldn't you use MapMate?

- Irregular contributors of records to VC Recorders will not find it worthwhile learning to use it.
- Simpler to just enter and supply records in a spreadsheet

(We can supply spreadsheets which make this easy – and are easy for Recorders to check then import into MapMate.)



Advantages of MapMate

- Simple to learn to use
- Easy to enter records
- Can easily exchange data with other MapMate users
- Flexible mapping
- Powerful analysis
- Can update species dictionaries



Disadvantages of MapMate

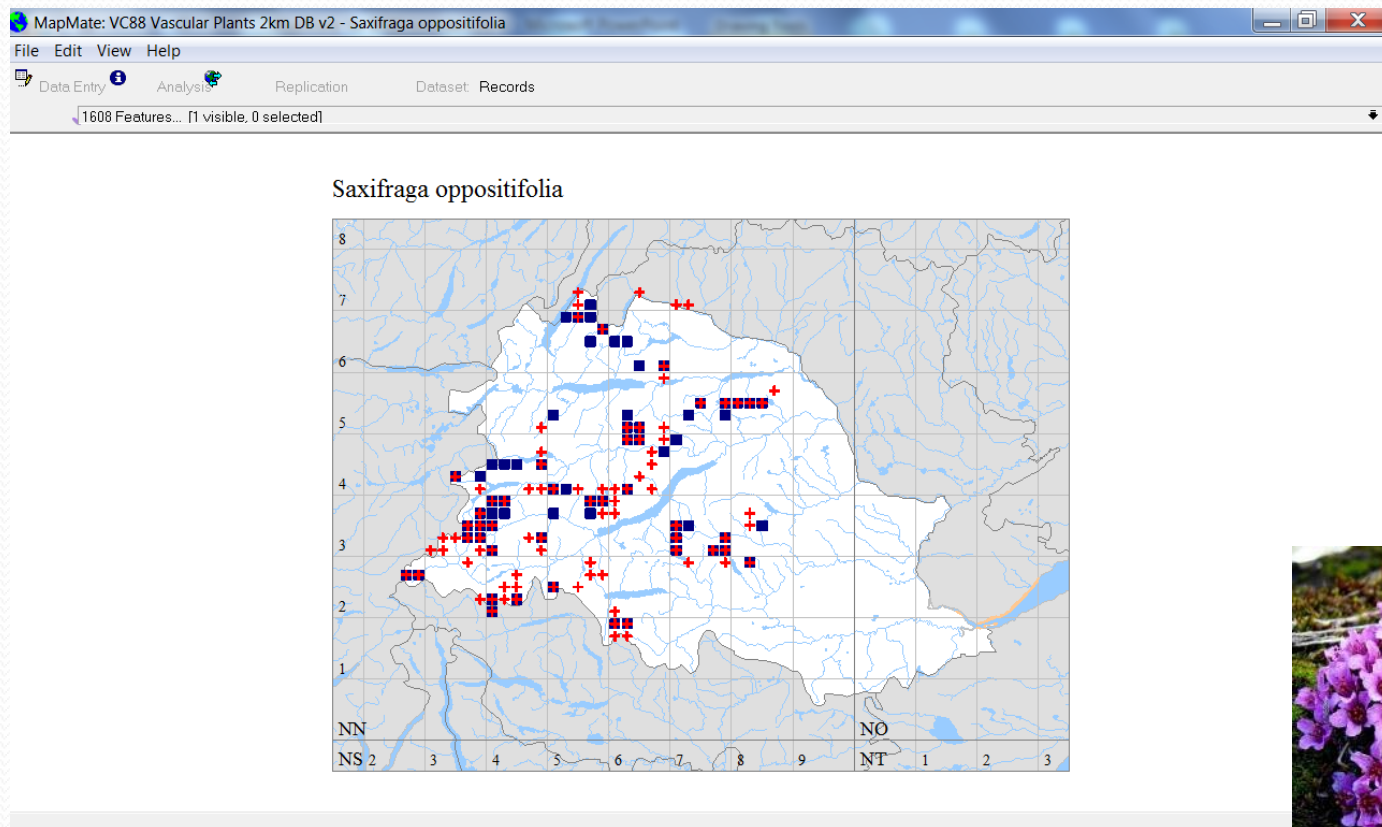
- It is a bit clunky compared with modern apps
- It does take time to learn how to use MM fully

(That's why if you only infrequently contribute records its much easier and simpler just to use spreadsheets.)



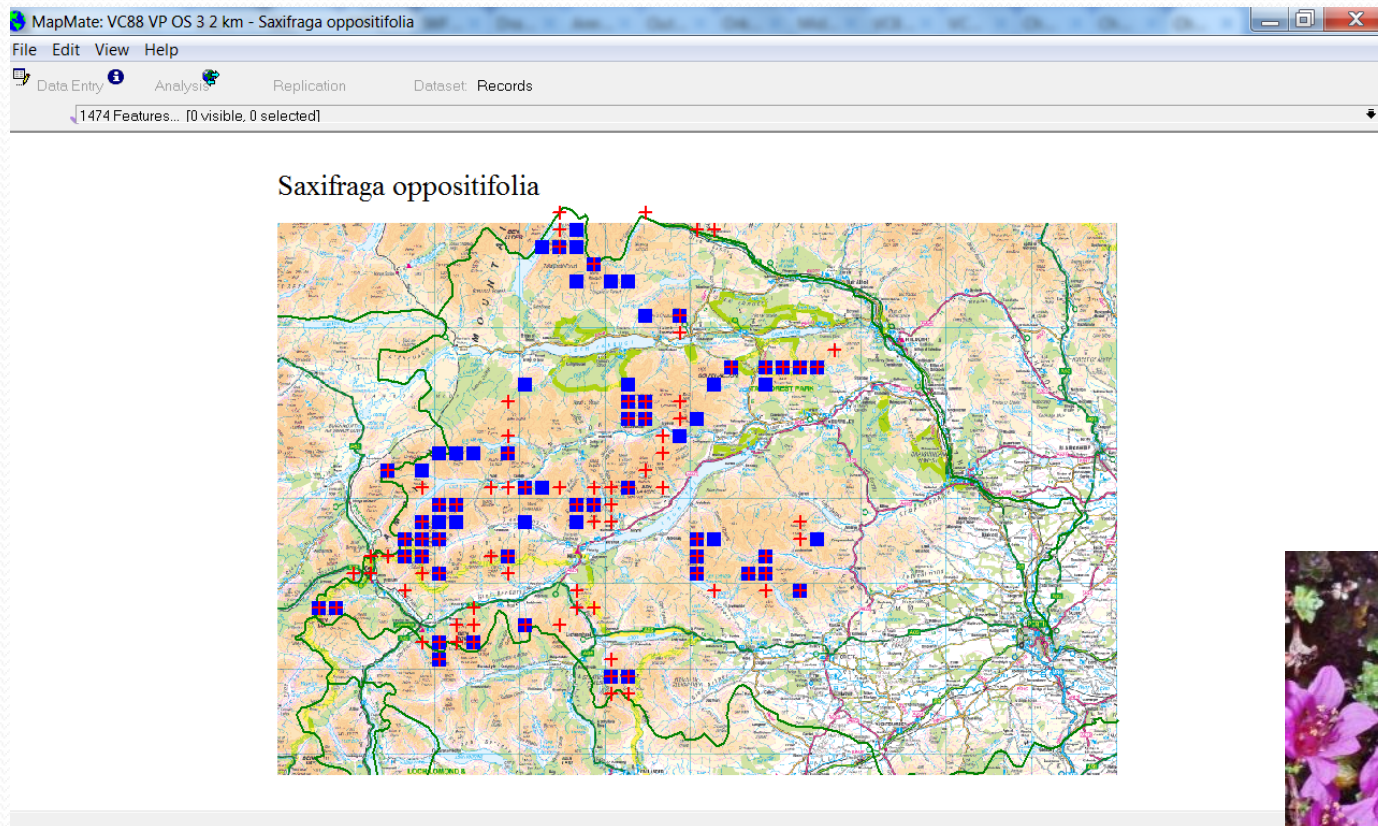
Mapping your Data

Date banded – pre 2000 ■ post 2000 +



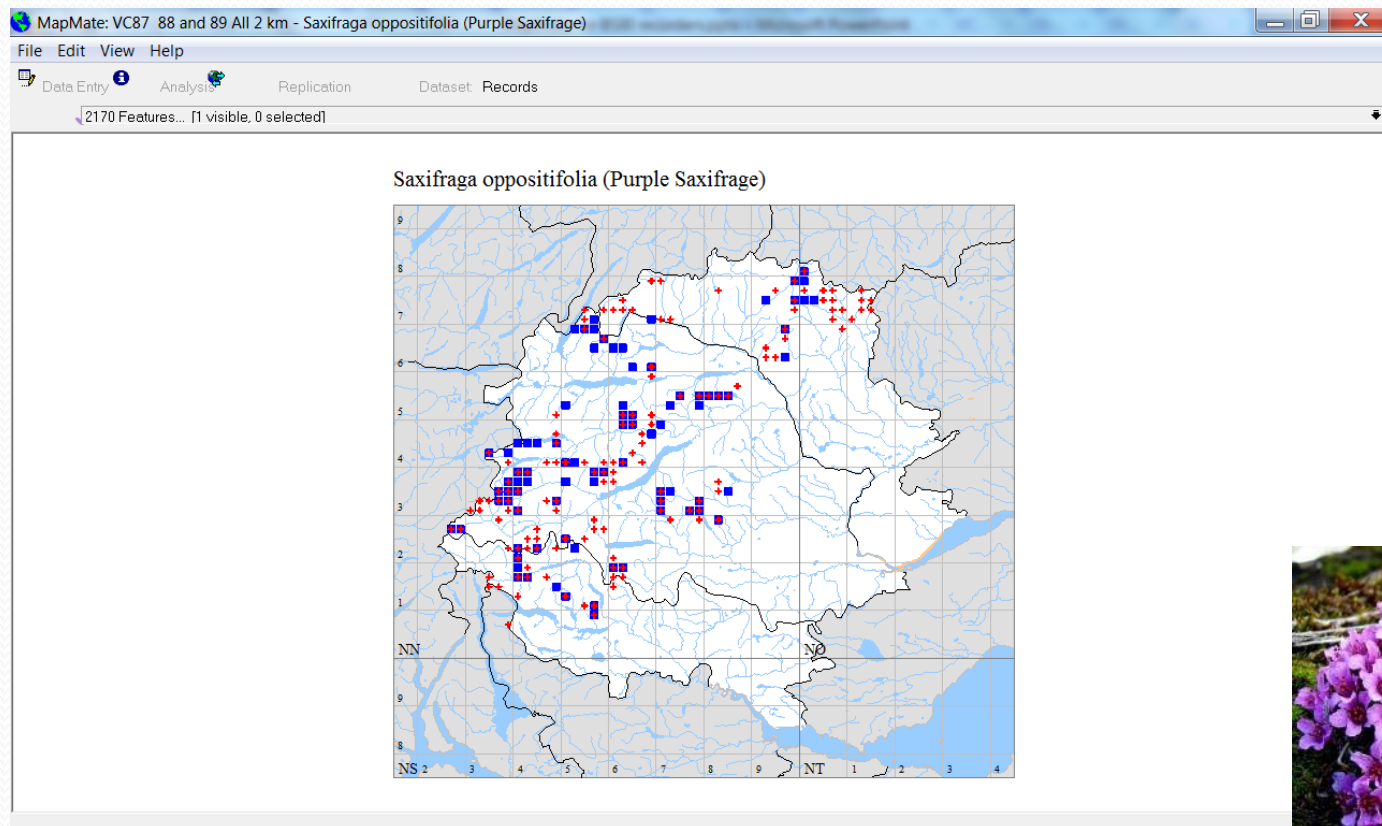
Mapping your Data

Date banded – pre 2000 ■ post 2000 +



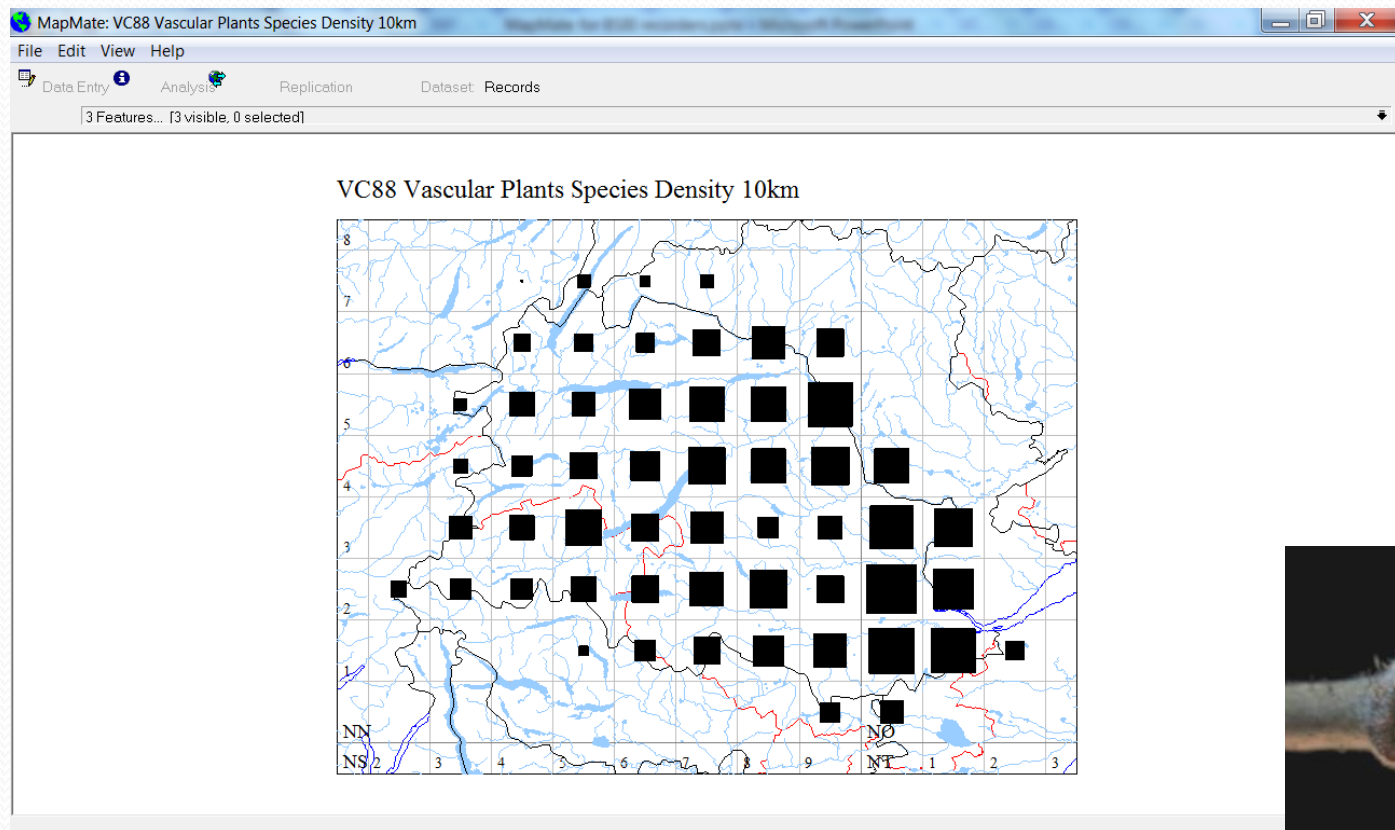
Mapping your Data

Date banded – pre 2000 ■ post 2000 +

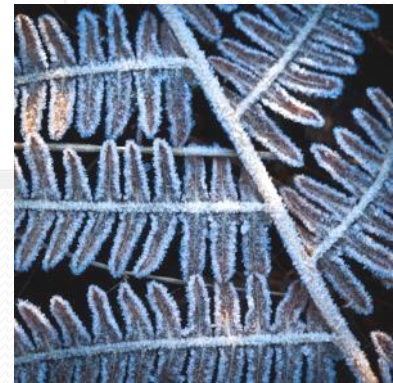
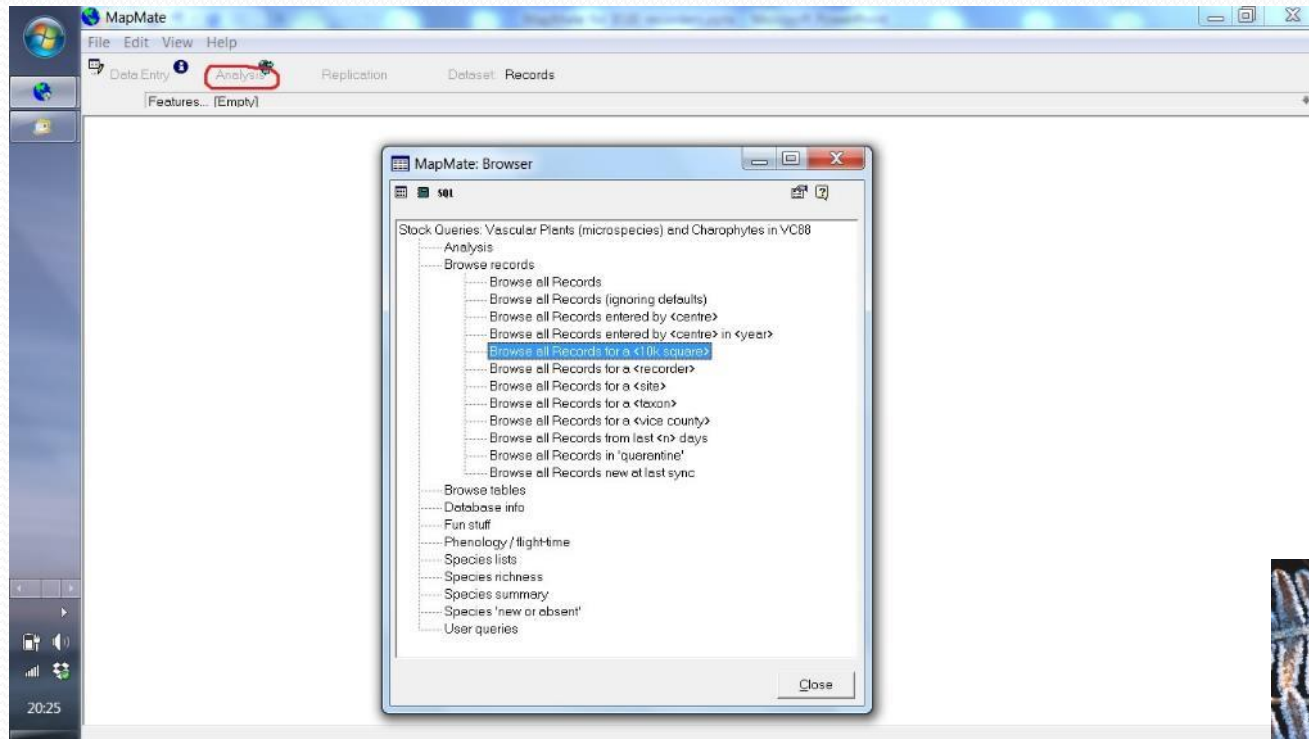


Mapping your Data

Special Maps...



Analyzing your data



Analyzing your data

Browse all Records for a <10k square> [nn22]

	Code	Taxon	Vernacular	Site	Gridref	Vice	Guar	Date	Recorder
▶	7	Achillea millefolium	Yarrow	Ben Oss, north east corrie crags	NN2926	88	0	14 Jul 1994	Thomas, R.E. & Gallagher, J.
	35.2	Agrostis canina	Velvet Bent	Ben Lui, north east corrie	NN22T	88	0	11 Jul 1988	Stewart, N.F., Stewart, O.M., Bevan, J. & McCosh, D.
	35.2	Agrostis canina	Velvet Bent	Ben Lui	NN275270	88	0	12 Jul 2009	Jones, J.R.
	35	Agrostis canina sens. lat.	Velvet Bent	Ben Oss, north east corrie crags	NN2926	88	0	14 Jul 1994	Thomas, R.E. & Gallagher, J.
	35	Agrostis canina sens. lat.	Velvet Bent	Ben Oss, north side	NN2926	88	0	05 Sep 1996	Watson, K.J.
	40	Agrostis capillaris	Common Bent	Ben Lui, north east corrie	NN22T	88	0	11 Jul 1988	Stewart, N.F., Stewart, O.M., Bevan, J. & McCosh, D.
	40	Agrostis capillaris	Common Bent	Ben Oss, north side	NN2926	88	0	05 Sep 1996	Watson, K.J.
	35.1	Agrostis vinealis	Brown Bent	Ben Oss, north east corrie crags	NN2926	88	0	14 Jul 1994	Thomas, R.E. & Gallagher, J.
	46	Ajuga reptans	Bugle	Ben Oss, north east corrie crags	NN2926	88	0	14 Jul 1994	Thomas, R.E. & Gallagher, J.
	48	Alchemilla alpina	Alpine Lady's-mantle	Ben Oss, north east corrie crags	NN2926	88	0	14 Jul 1994	Thomas, R.E. & Gallagher, J.
	48	Alchemilla alpina	Alpine Lady's-mantle	Coire Buidhe Cliffs	NN2926	88	0	15 Jul 1988	Stewart, N.F.
	48	Alchemilla alpina	Alpine Lady's-mantle	Ben Oss, north side	NN2926	88	0	05 Sep 1996	Watson, K.J.
	48	Alchemilla alpina	Alpine Lady's-mantle	Ben Lui	NN275270	88	0	12 Jul 2009	Jones, J.R.
	48	Alchemilla alpina	Alpine Lady's-mantle	Ben Lui (Beinn Laoigh) North - Crags between	NN22T	88	0	12 Jul 2009	Godfrey, A. & BSBI
	48	Alchemilla alpina	Alpine Lady's-mantle	Ben Lui, north east corrie	NN22T	88	0	11 Jul 1988	Stewart, N.F., Stewart, O.M., Bevan, J. & McCosh, D.
	48	Alchemilla alpina	Alpine Lady's-mantle	Ciochan Beinn Laoigh	NN22T	88	0	09 Jul 2005	Muscott, Miss J.
	48	Alchemilla alpina	Alpine Lady's-mantle	Ben Lui (VC88)	NN2627	88	0	12 Jul 2009	Carl Farmer & BSBI field meeting
	4480	Alchemilla filicaulis	Hairy Lady's-mantle	Ben Lui, north east corrie	NN22T	88	0	11 Jul 1988	Stewart, N.F., Stewart, O.M., Bevan, J. & McCosh, D.
	51	Alchemilla glabra	Smooth Lady's-mantle	Ciochan Beinn Laoigh	NN22T	88	0	09 Jul 2005	Muscott, Miss J.
	51	Alchemilla glabra	Smooth Lady's-mantle	Ben Lui	NN275270	88	0	12 Jul 2009	Jones, J.R.
	51	Alchemilla glabra	Smooth Lady's-mantle	Ben Oss, north side	NN2926	88	0	05 Sep 1996	Watson, K.J.
	51	Alchemilla glabra	Smooth Lady's-mantle	Ben Oss, north east corrie crags	NN2926	88	0	14 Jul 1994	Thomas, R.E. & Gallagher, J.
	51	Alchemilla glabra	Smooth Lady's-mantle	Ben Lui (VC88)	NN2627	88	0	12 Jul 2009	Carl Farmer & BSBI field meeting
	51	Alchemilla glabra	Smooth Lady's-mantle	Ben Lui (Beinn Laoigh) North - Crags between	NN22T	88	0	12 Jul 2009	Godfrey, A. & BSBI
	51	Alchemilla glabra	Smooth Lady's-mantle	Ben Lui, north east corrie	NN22T	88	0	11 Jul 1988	Stewart, N.F., Stewart, O.M., Bevan, J. & McCosh, D.
	59	Alchemilla wichurae		Ben Lui	NN275270	88	0	12 Jul 2009	Jones, J.R.
	59	Alchemilla wichurae		Ben Lui (Beinn Laoigh) North - Crags between	NN27602696	88	0	12 Jul 2009	Godfrey, A. & BSBI
	105	Anemone nemorosa	Wood Anemone	Ben Lui (VC88)	NN2627	88	0	12 Jul 2009	Carl Farmer & BSBI field meeting
	105	Anemone nemorosa	Wood Anemone	Ben Lui (Beinn Laoigh) North - Crags between	NN22T	88	0	12 Jul 2009	Godfrey, A. & BSBI
	105	Anemone nemorosa	Wood Anemone	Ben Lui, north east corrie	NN22T	88	0	11 Jul 1988	Stewart, N.F., Stewart, O.M., Bevan, J. & McCosh, D.
	105	Anemone nemorosa	Wood Anemone	Ciochan Beinn Laoigh	NN22T	88	0	09 Jul 2005	Muscott, Miss J.
	105	Anemone nemorosa	Wood Anemone	Ben Oss, north east corrie crags	NN2926	88	0	14 Jul 1994	Thomas, R.E. & Gallagher, J.
	105	Anemone nemorosa	Wood Anemone	Ben Lui	NN275270	88	0	12 Jul 2009	Jones, J.R.
	109	Angelica sylvestris	Wild Angelica	Ben Oss, north east corrie crags	NN2926	88	0	14 Jul 1994	Thomas, R.E. & Gallagher, J.

Record 1 of 929 Records

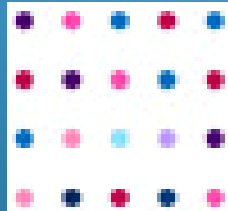


Questions?



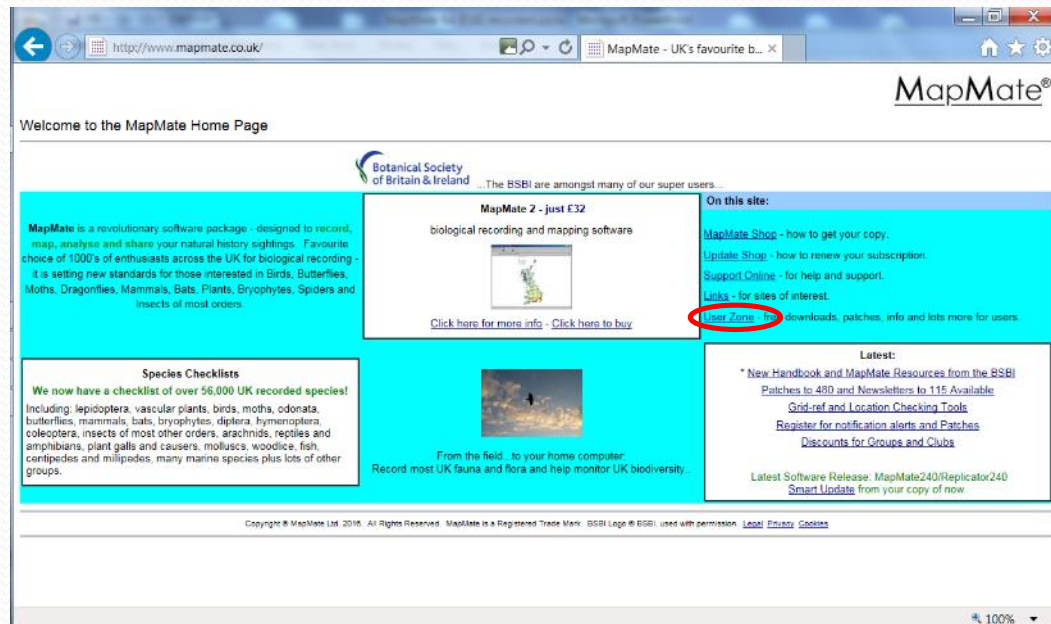
MapMate practical: the basics

Jim McIntosh, BSBI Scottish Officer



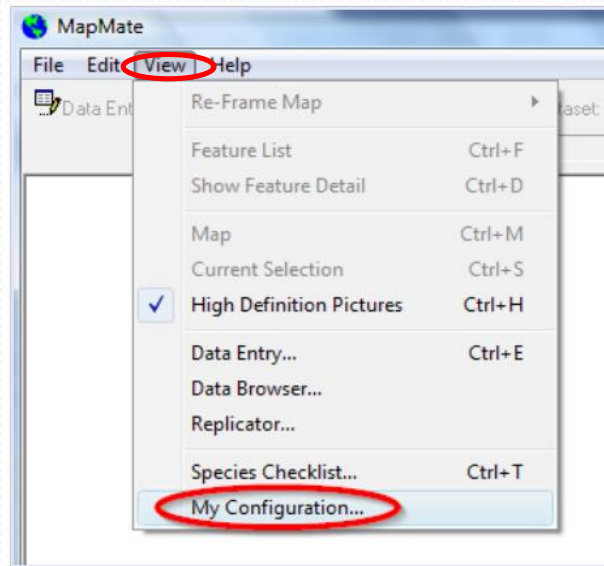
Register & Log-on to MapMate

1. You must register with MM so that you'll receive alerts and be able to use its synching service.



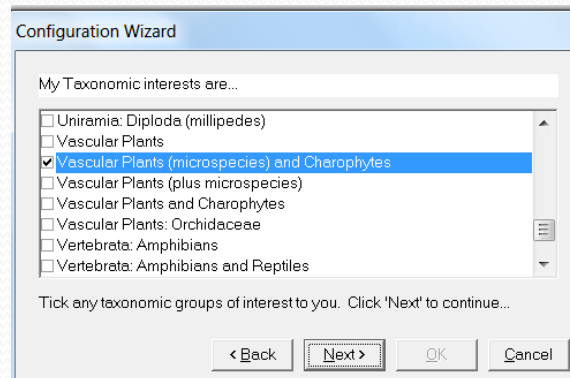
Keeping up to date

1. When you get an email alert that a new patch or patches have been issued, you ought to download them, follow the given instructions.
2. Then synch them into your database.
3. Then you MUST go through View> My configuration:



Keeping up to date

Select your taxonomic interests



Configuration Wizard

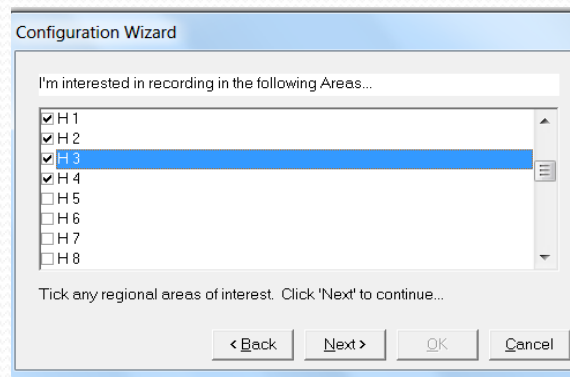
My Taxonomic interests are...

- ☐ Uniramia: Diploida (millipedes)
- ☐ Vascular Plants
- ☒ Vascular Plants (microspecies) and Charophytes
- ☐ Vascular Plants (plus microspecies)
- ☐ Vascular Plants and Charophytes
- ☐ Vascular Plants: Orchidaceae
- ☐ Vertebrata: Amphibians
- ☐ Vertebrata: Amphibians and Reptiles

Tick any taxonomic groups of interest to you. Click 'Next' to continue...

< Back Next > OK Cancel

Select your VC – AND all neighbouring VCs



Configuration Wizard

I'm interested in recording in the following Areas...

- ☒ H 1
- ☒ H 2
- ☒ H 3
- ☒ H 4
- ☐ H 5
- ☐ H 6
- ☐ H 7
- ☐ H 8

Tick any regional areas of interest. Click 'Next' to continue...

< Back Next > OK Cancel



Backing-up

How often?



Backing-up

How often? – just think of having to re-enter all the data since your last back-up! So after **every** data entry session!

Two ways to do it:

1. Copy entire “My MapMate” folder onto a pen drive (best)

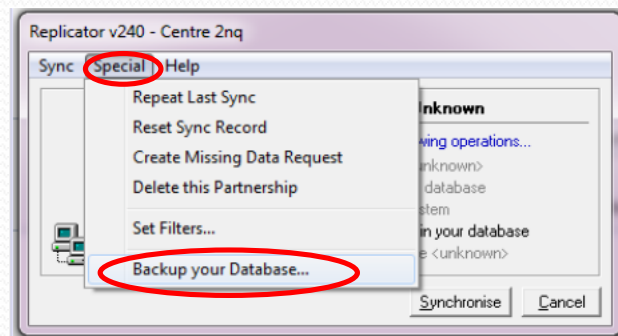


Backing-up

How often? – just think of having to re-enter all the data since your last back-up! So after **every** data entry session!

Two ways to do it:

1. Copy entire “My MapMate” folder onto a pen drive (best)
2. Use Replicator > Special > Backup your Database...



Synching data out

Most important thing to remember is that synching is ALWAYS a two step process.

To send data:

1. Create synch file after setting up synch partner & filters
2. Send it to them

If successful will get confirmation emails within a few hours.



Synching data in

Most important thing to remember is that synching is ALWAYS a two step process.

To receive data:

1. Download synch file
2. Synch it into your MapMate database

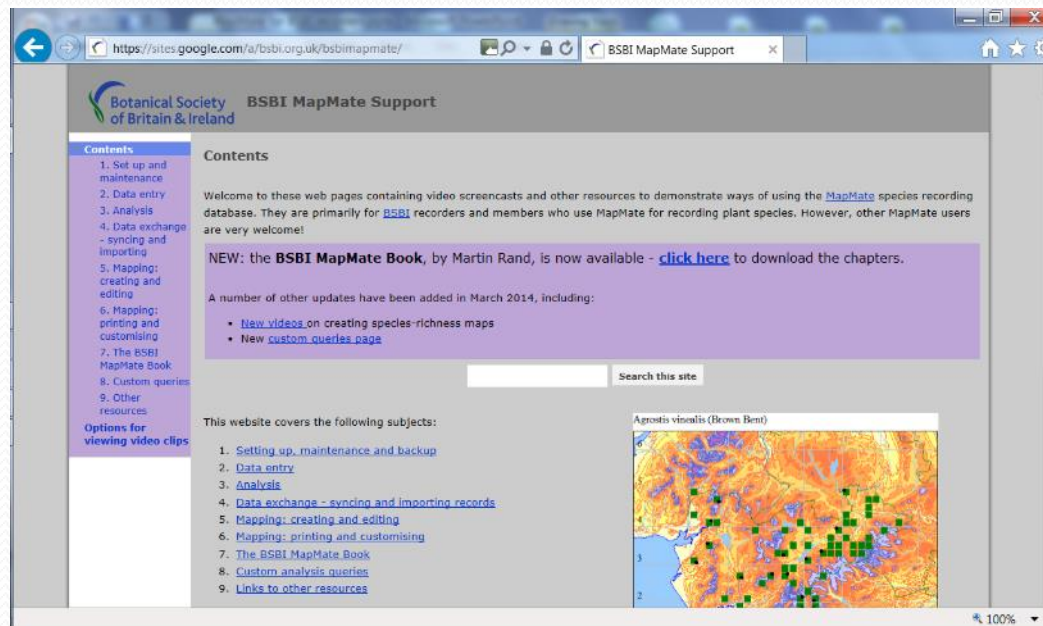
You will get option to send confirmation email –
And you should do that to acknowledge recipient.



More information on MapMate

- On the MapMate site and in MapMate's own "Help" files.
- On the BSBI MapMate website* mainly as short videos.
- Also in the BSBI MapMate Handbook - on BSBI MM site.

*Google "BSBI MapMate"



Thanks

- Martin Rand who wrote the BSBI MapMate Handbook (On which much of this is based.)
- To all those who entered the BSBI Photographic Competition in 2015!

