

'Let us assay our plot': The NPMS in 2016

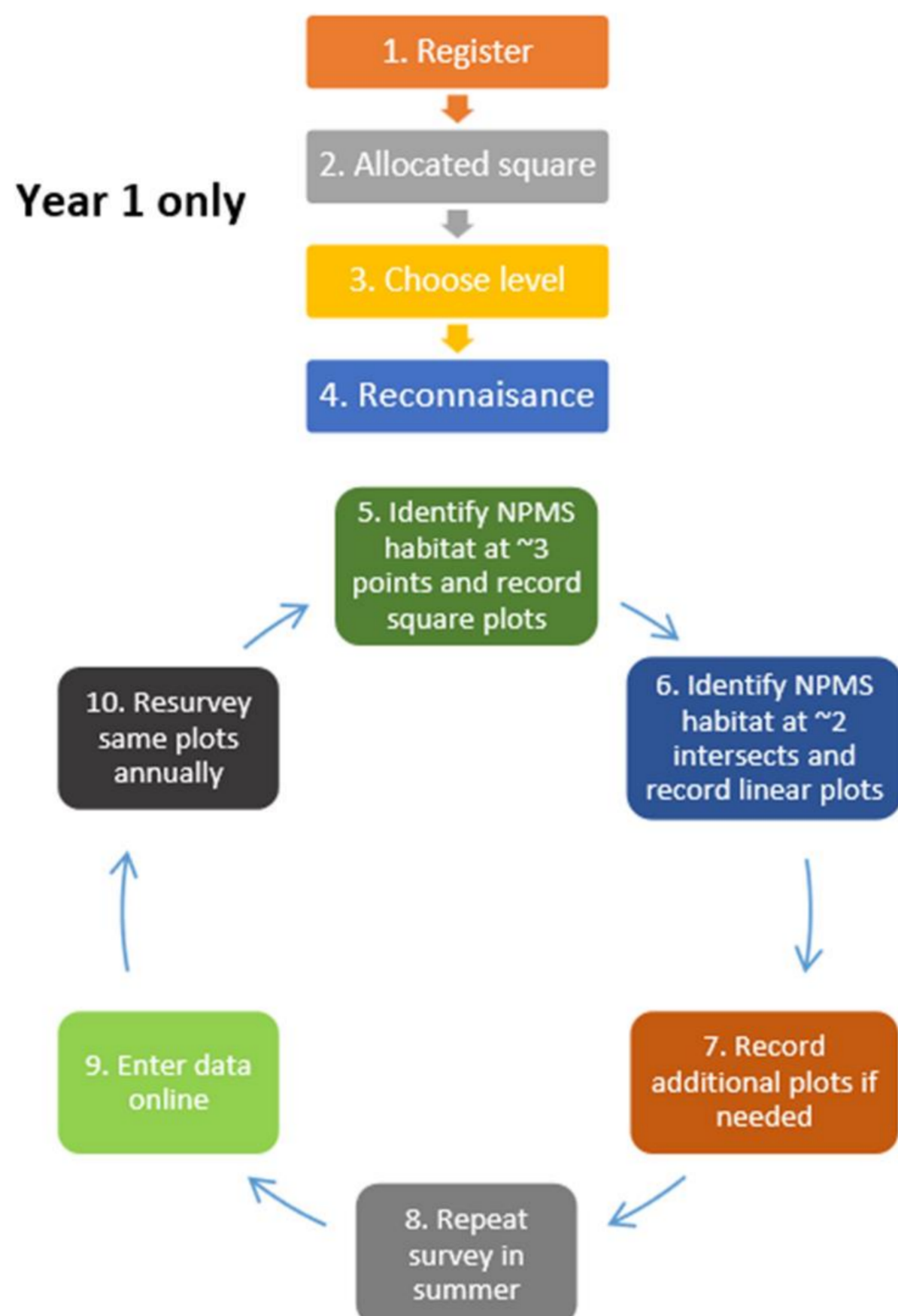
O. Pescott, D. Roy (CEH), H. New, F. Harris (Plantlife), K. Walker (BSBI),
N. Newton (JNCC), L. Somerville (NIEA), P. Campbell (NMNI)



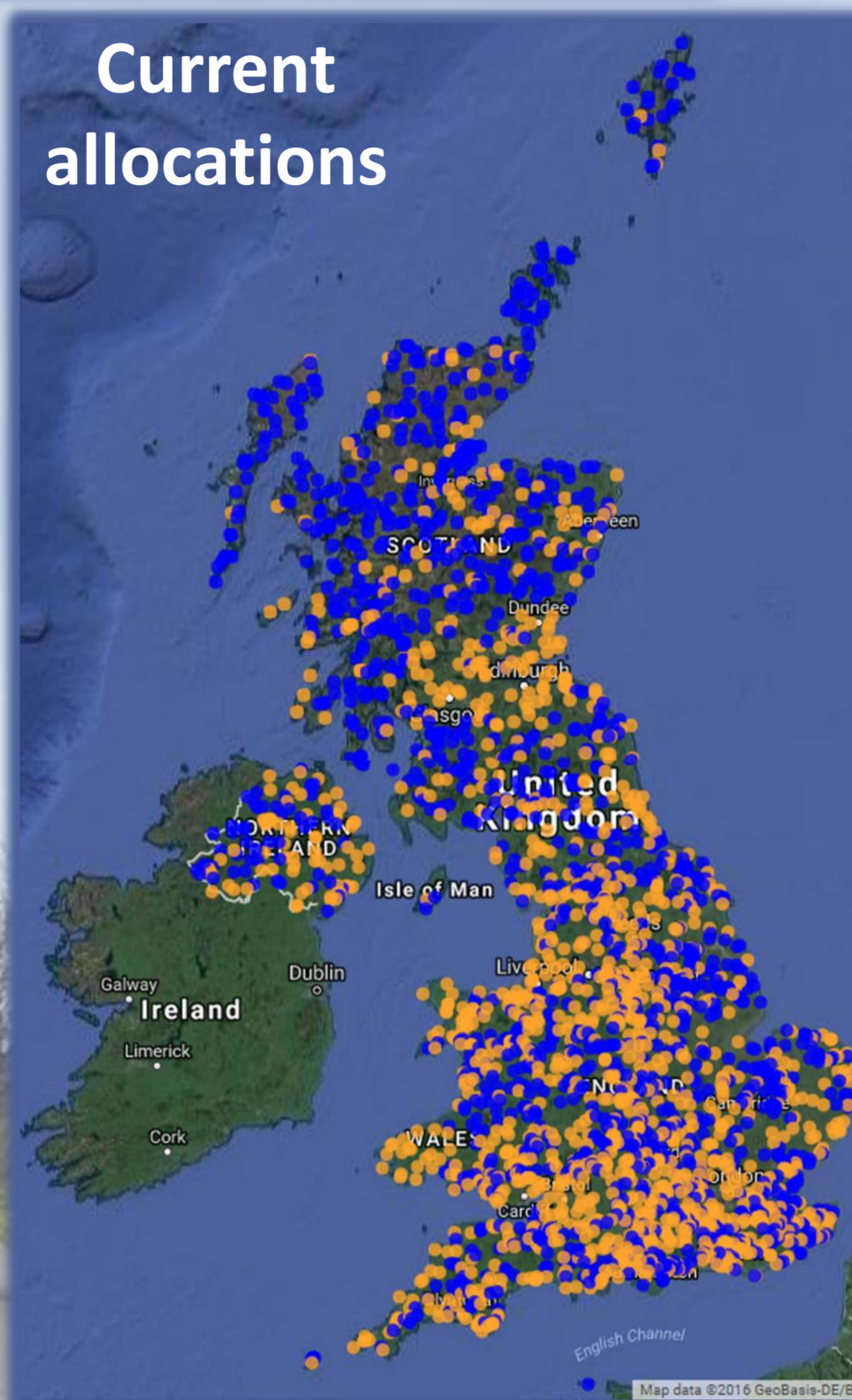
National Plant Monitoring Scheme

www.npms.org.uk

Scheme overview



Current allocations



Orange squares are allocated; blue squares are still available. Extra squares in a 100 x 100 km area are released when 75% of the existing set are allocated.



– 2016 developments –

- Increased uptake – 20% increase, 106 surveyors with >1 square
- 28 training workshops with 269 participants
- Local mentoring schemes in place
- Photo upload flowing to iRecord for verification
- Improved website, including YouTube instructional videos
- Partnerships with WTs, National Trust, AONBs, National Parks

Broad habitat samples: 2015/16

Arable margins	399
Bog & wet heath	300
Broadleaved woodland etc.	1922
Coast	362
Freshwater	328
Heathland	321
Lowland grassland	1613
Marsh & fen	46
Upland grassland	102
Native pinewood & juniper scrub	57
Rock outcrops, cliffs & scree	100

Unique plots: 2015/16

Wildflower	670
Indicator	985
Inventory	853

