



Databases Combine to Clarify Relationships in Botanising Families.

Roger Horton  
St Bede's Crescent, Cambridge [rogerhorton@zoho.com](mailto:rogerhorton@zoho.com)

Charles E. G. Pease  
Kinloch Hotel, Pennyghael, Isle of Mull, Argyll. [kinlochhotel@btinternet.com](mailto:kinlochhotel@btinternet.com)



**herbaria@home** (h@h) is over 10 years old but still outshines many more recent on-line citizen science databases in that it allows volunteers not only to document herbarium sheets but also to join in a community to extend the biographical details of botanists, such information having been initially incorporated in the database from Kent and Allen (1984), and Desmond (1994). Botanists such as Frederick Janson and Francis Alfred Hanbury were often linked but their family relationship was unclear. Similarly Rachel Ford Thompson was clearly a contributor to a herbarium of 'R.F. and F.P. Thompson', but who was her associate?

Relationships, can be difficult to establish when they passes through a line of non-botanists, or where one sibling eclipses the contribution of another.

Many botanical collectors were Quakers, quite often from the same extended families. Two such families were the Hanburys and the Thompsons. The h@h database contains Frederick Janson (FJH), Francis Alfred (FAH), and Daniel (DH), Hanbury; and in excess of twenty named Thompson, including Rachel Ford Thompson and her close family.

One of us (CEGP) has collected data relating to the his family and others in the Pease Family Index (PFI), a database of Quaker extended families.

1 A specimen collected by FAH and kept in his herbarium was later transferred to that of FJH. But how were they related? h@h has a single specimen from DH. Was he also a relative?

PFI has the answer: FJH and FAH were fifth-cousins, both descended from Richard Hanbury (1647-1714). DH was also related (first-cousin once removed), and with his brother, Sir Thomas Hanbury (1832-1907), laid out the La Mortola gardens at Ventimiglia, Italy.

2 Many specimens collected by Rachel Ford Thompson were retained in the 'R.F. & F.P. Thompson'. Who was her associate?

PFI gives an answer. A younger sister, Frances Phillips Thompson (1862-1946). An older brother, Silvanus Phillips Thompson (1851-1916), although 'noted for his contributions to electrical and magnetic science' (natstand) is also recorded as 'S. P. S.' collecting a specimen with Rachel.

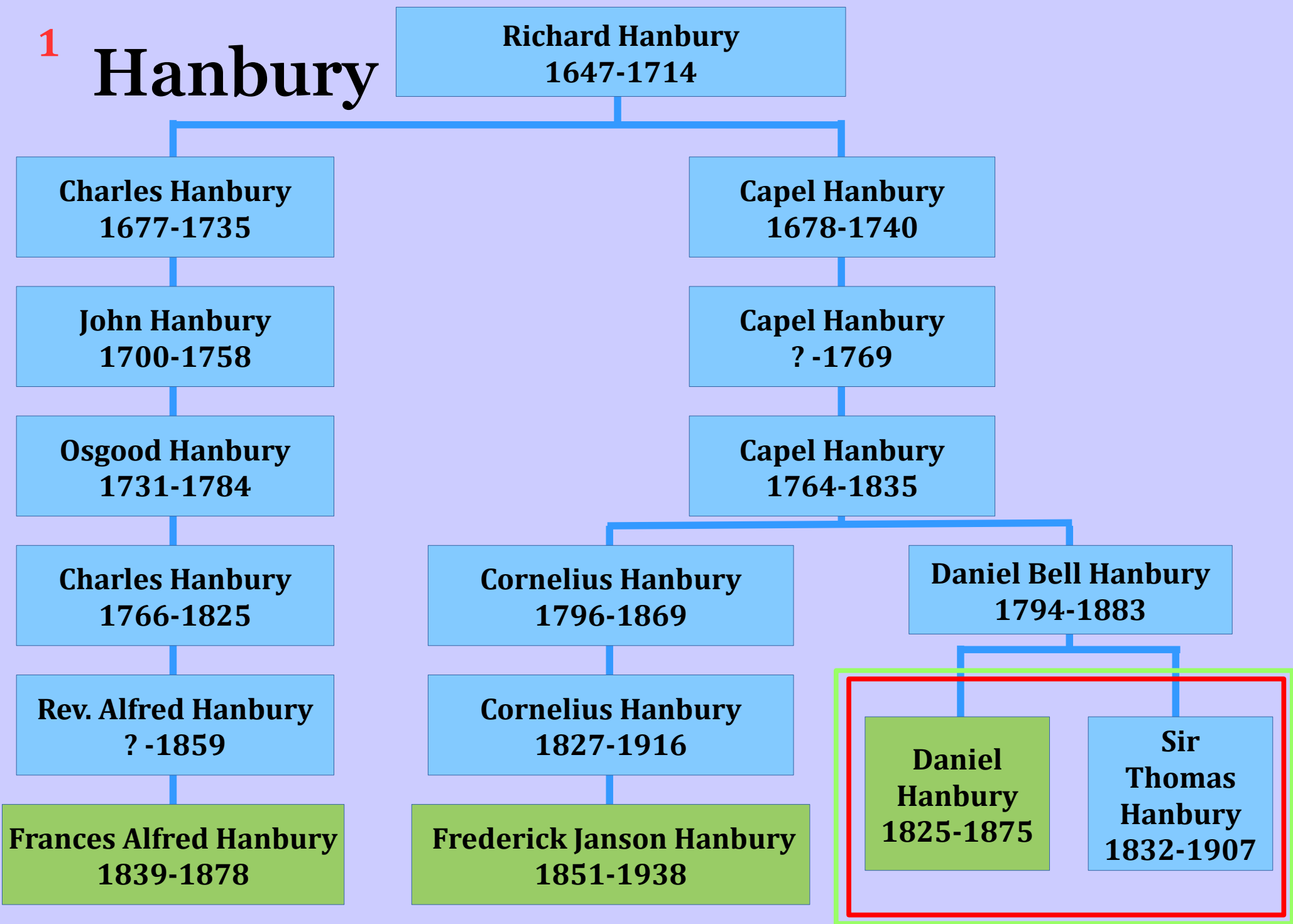
Key:

botanist with at least 1 specimen in h@h

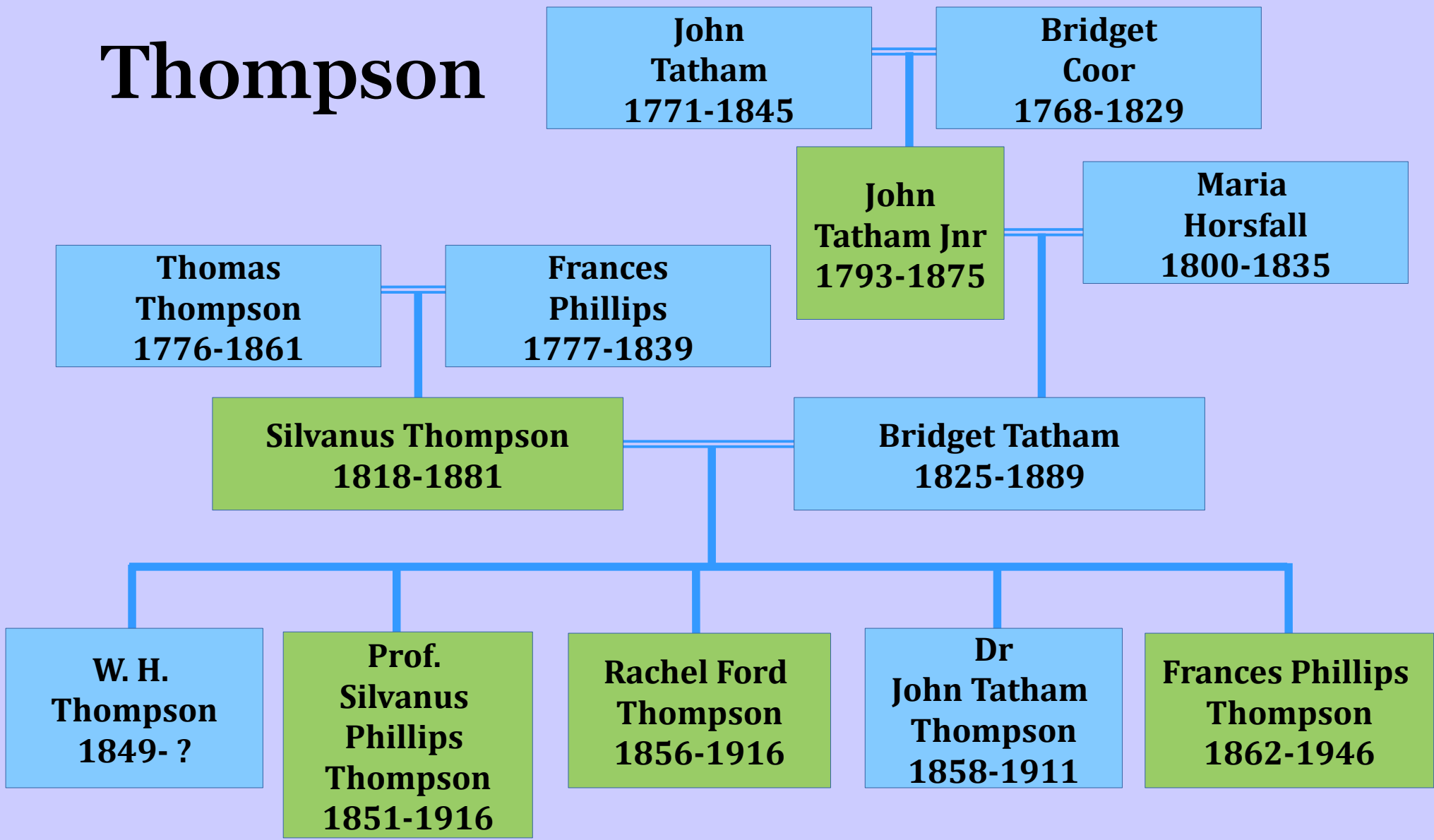
other individuals

founders La Mortola gardens

1 Hanbury

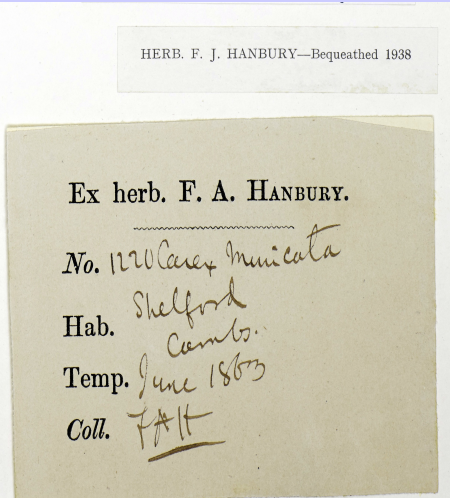


2 Thompson



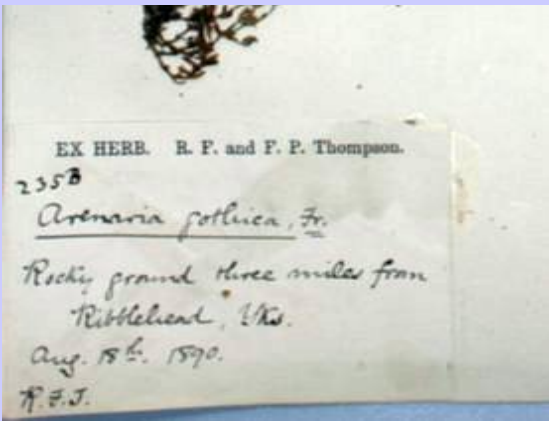
Typical labels

1



Specimen collected by FAH and kept in his herbarium, but later transferred to that of F.J. Hanbury. (sheet 383436)

2



Specimen collected by R.F.T., herbarium R.F. and F.P. Thompson. (sheet 268711)

Acknowledgments and References

BSBI Botanical Society of Britain & Ireland, Natural History Museum, Cromwell Rd, London, SW7 5BD: [herbaria@home](http://herbariaunited.org/atHome/) <http://herbariaunited.org/atHome/> herbaria@home database manager Tom Humphrey ([tom@herbariumathome.org](mailto:tom@herbariumathome.org))

Pease Family Index <http://www.pennyghael.org.uk/genealogy.htm>

British and Irish Herbaria D. H. Kent and D. E. Allen, 1984.

Dictionary of British and Irish Botanists and Horticulturalists R. Desmond, 1994.

Other resources:

Tatham Family Genealogical Chart <http://www.tathamhistory.org.uk/tatham-family.php> (early Tathams)

Natstand <http://www.natstand.org.uk/index.htm> (Silvanus Thompson, FP Thompson)

Silvanus Phillips Thompson, D.Sc., LL.D., F.R.S. : his life and letters, Jane Smeal Thompson & Helen G. Thompson, 1920.

<https://archive.org/stream/silvanusphillips00thomuoft>