

CORNISH BIODIVERSITY NETWORK



by Colin French
West Cornwall (VC1) Recorder

Cornish Biological Records Unit at Murdoch House (1972-1987)



The CBRU at the Trevithick Centre (1989-1996)



The millionth record

Sailfin Dory (*Zenopsis conchifer*)
caught off Looe 29/09/1995





CBRU



CWT/ERCCIS

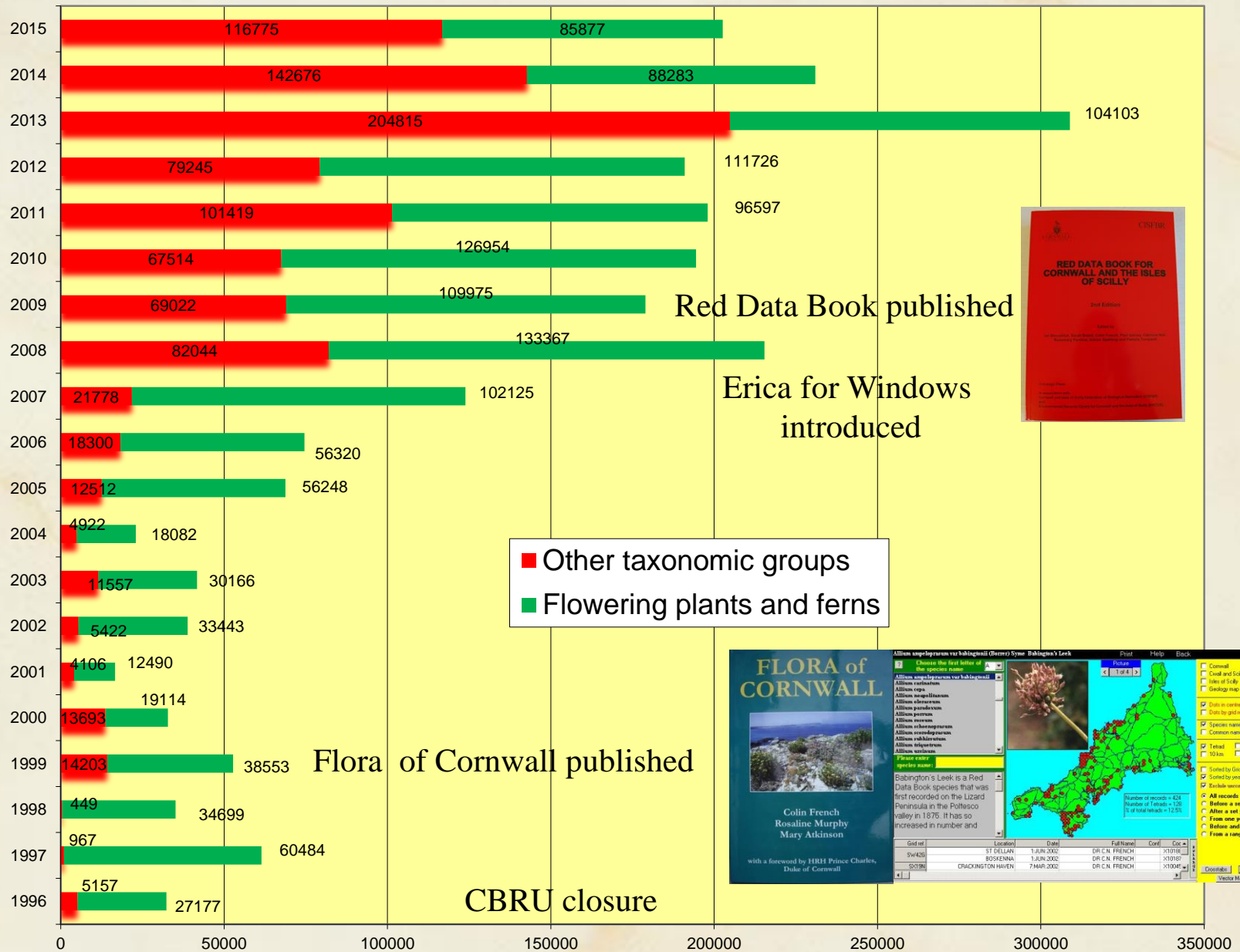


ERICA at Exeter Univ.



ERICA on PC

Number of records entered in ERICA per year



1987 – 1997 - 1,078,242 records entered



CBRU



ERCCIS

?

ERICA at Exeter Univ.



ERICA on PC



ERICA for
WINDOWS



CORNISH BIODIVERSITY NETWORK



No charge / donation for data

National Recording Groups (e.g. BSBI) NBN Gateway

Cost / charge for data

Local Recording Groups

Recording Community

Commercial organisations

Statutory Agencies

NGOs

Education

Museums

Public

CORNISH BIODIVERSITY NETWORK

MASTER DATABASE

Validation & verification – V.C. Recorders



ERICA for Windows

ERICA for Windows interface showing data for *Hieracium umbellatum*.

Map View: A map of the study area with a grid overlay. A key indicates records from 1999 (black dots) and before 2000 (red dots). The map shows a high density of records in the central and eastern parts of the area.

Photographs: Three photographs of *Hieracium umbellatum* plants with yellow flowers and green leaves are displayed side-by-side.

Table View: A table listing records for *Hieracium umbellatum* (Narrow-leaved Hawkweed). The table includes columns for Species, Common name, G.R., Full grid ref., Easting, Northing, Recorder, Location, Date, Day, Month, Year, and Notes.

Species	Common name	G.R.	Full grid ref.	Easting	Northing	Recorder	Location	Date	Day	Month	Year	Notes
<i>Hieracium umbellatum</i>	Narrow-leaved Hawkweed	SW32U	SW376295	1376	295	C.E. WILD	LITTLE KELYNACK FARM	30/Jun/2016	30	6	2016	
<i>Hieracium umbellatum</i>	Narrow-leaved Hawkweed	SX16J	SX138696	2138	696	MR I.J. BENNALICK	BURY CASTLE, EAST OF	6/Jul/2016	6	7	2016	
<i>Hieracium umbellatum</i>	Narrow-leaved Hawkweed	SW73A	SW702317	1702	317	C.E. WILD	CARNEBONE	25/May/2016	25	5	2016	
<i>Hieracium umbellatum</i>	Narrow-leaved Hawkweed	SW73S	SW76153536	17615	3536	DR C.N. FRENCH	NEAR ROSKROW	20/Jul/2016	20	7	2016	
<i>Hieracium umbellatum</i>	Narrow-leaved Hawkweed	SW73S	SW76113535	17611	3535	DR C.N. FRENCH	NEAR ROSKROW	20/Jul/2016	20	7	2016	
<i>Hieracium umbellatum</i>	Narrow-leaved Hawkweed	SW73P	SW741381	1741	381	C.E. WILD	TREBOST	16/Jul/2016	16	7	2016	
<i>Hieracium umbellatum</i>	Narrow-leaved Hawkweed	SW75A	SW70375141	17037	5141	DR C.N. FRENCH	ST AGNES HEAD	15/Aug/2016	15	8	2016	
<i>Hieracium umbellatum</i>	Narrow-leaved Hawkweed	SW73N	SW744372	1744	372	DR C.N. FRENCH	STITHIANS SHOWGROUND	19/Aug/2016	19	8	2016	
<i>Hieracium umbellatum</i>	Narrow-leaved Hawkweed	SW95F	SW93365055	19336	5055	DR C.N. FRENCH	TRENOWTH WOOD	12/Aug/2016	12	8	2016	
<i>Hieracium umbellatum</i>	Narrow-leaved Hawkweed	SW95F	SW93145063	19314	5063	DR C.N. FRENCH	TRENOWTH WOOD	12/Aug/2016	12	8	2016	
<i>Hieracium umbellatum</i>	Narrow-leaved Hawkweed	SW96V	SW99876109	19987	6109	DR C.N. FRENCH	TRENOWER, ROCHE	16/Aug/2016	16	8	2016	

Summary: Squares before = 482, After = 956. No of records = 2014.

Cornish Biodiversity Network

File Taxonomy

Cornish Flora 1999

Edit old floras

Western Ramping-fumitory is an endemic, Red Data Book plant which is almost totally restricted to West Cornwall and the Isles of Scilly. It is seen most readily on the western half of the Lizard where it can be found at the same spot for many years. Elsewhere it tends to be more casual in its occurrence, dependent on the management of a site at any particular time. This fumitory grows in fields, on Cornish Hedges, road verges, in gardens and on waste ground, especially where soil is dumped or disturbed.

New Flora of Cornwall

EDIT NEW FLORA

Cornish Red Data Book 2009

Range & Status
Native; endemic to Cornwall and the Isles of Scilly.

Regional Distribution
In total it has been recorded from 256 1km squares which are almost entirely restricted to West Cornwall and the Isles of Scilly. In West Cornwall the main populations are centred around Helston (SW62) and the east Lizard area (SW61), Hayle (SW53), Camborne (SW64) and Newquay (SW86). On the Isles of Scilly it is only found on St. Mary's (SV91), although it has occurred on St. Martin's (SV91). In East Cornwall

Davey Flora 1909

Native. Cultivated ground chiefly among root crops, roadsides, waste places. Very local. A. May-October.
First record: Pugsley in *Journ. Bot.* 1904, 217-220.

4. Little Petherick, Riley. Rock, St. Minver, Tellam.
5. Newquay, frequent, Vigurs. Perranporth, 1907.
7. Helston, Riddelsdell in *Journ. Bot.* 1904, 217. Sithney, Emlyn.
8. St. Ives, Mrs. Adamson. Margin of a wood, Lelant, Mrs. E. S. Gregory. Penzance, Pugsley *l.c.*

Margetts Review 1981

Frequent and widespread in West Cornwall, very rare in the East. As its world distribution is restricted to Cornwall, we have felt it advisable to list all records additional to those in the Flora and Suppt.

West 32, Lands End, BRC; 42, Mousehole, J.M.M.; 53, Lelant Church, L.J.M.; Phillack, L.J.M.; Upton Towans, B.E.M.G. and J.A.P.; near Gwithian Church, J.A.P.; Connor Downs, A.C.L.; St Erth, J.A.P.; (54), Godrevy, J.S.R.; 61, Mullion, BRC; 62, Gunwalloe, CNT; Porthleven, H.B.S.; 63, Piece, Carnkie, L.J.M.; Penponds, and

Cornish Red Data Book 1997

Range & Status
Native; endemic to Cornwall and the Isles of Scilly.

Regional Distribution
In 1983 (Perring & Farrell, 1983) *Fumaria occidentalis* was recorded as being 'abundant' in at least 20 stations in Cornwall and the Isles of Scilly, these covering 16 10km. squares. By December 1994 the number of recorded sites had increased to at least 114 stations with a distribution through 27 10km. squares. The rate of spread eastwards, however, is very slow. Two stations were then known in east Cornwall (VC2) and by 1994 this number had increased to only

Supplement 1922

F. occidentalis, Pugsley.

5. Garden weed, Penwortha near Perranporth, 1916, Thurston. Bolingey and Treworthen, Perranzabuloe, Tresidder. Lam-bourne Hill, Perranzabuloe, Rilstone. Hayle, 1911, Jenner.
8. Marazion Station, Davey, *R.I.C.*, 1911, p. 376. "Garden ground, Newlyn, 1881 (Herb. C. Bailey as *F. confusa*), the earliest known example" Puaslev. *Journ. Bot.* 1913, p. 50.

Supplement 1991

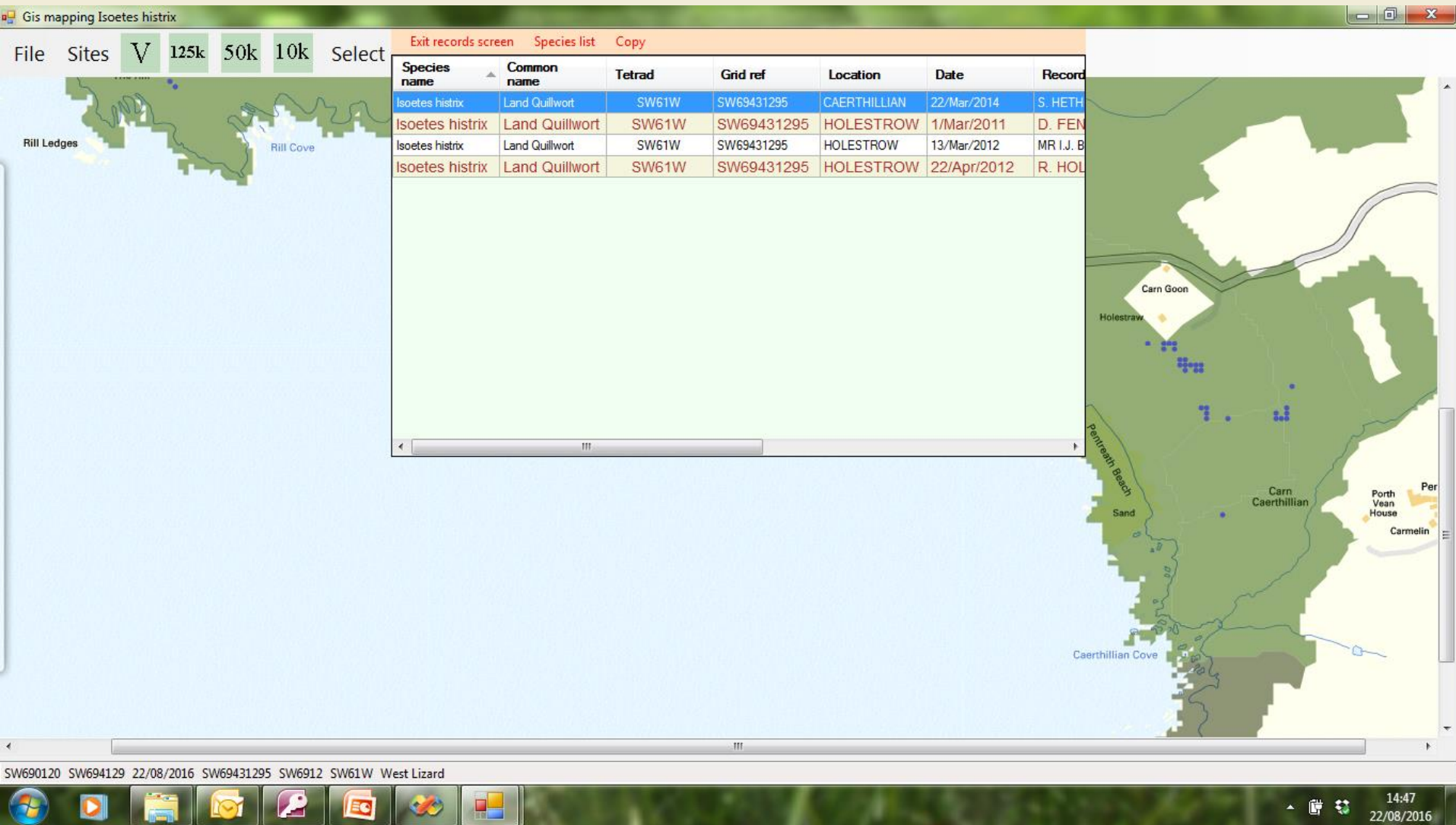
Probably spreading as a colonist of recently disturbed ground, but still absent from most of East Cornwall.

West 53, Nutwalk between Carbis Bay and St Ives, L.J.M.; near bridge, Townshend, A.L.G., L.J.M. & K.S.; 53 & 63, abundant on disturbed ground, Camborne-Hayle bypass, K.S.; 63, council tip, Leedstown, WEA; 61, 62, 71 & 72, scattered over the Lizard, UBLP; 72, in quarry, Tregaddra, the Lizard, P.D.S., CGE, comm. BRC; 74, frequent on disturbed ground by roadside between

Squares before = 179, After = 280 No of records = 896

14:44 22/08/2016

Cornish Biodiversity Network



Cornish Biodiversity Network

Gis mapping

File Sites **V** 125k 50k 10k Select Exit records screen Species list Copy

Species Common Tetrad Gridref Location Date Rec

View Species List

File Copy Sort

Species name	Common name	Family name	First Year	Last Year	BAP species	Cornish RDB	Rare Plant Register	Importa Plant Area	RDB 2014	Status	Native
<i>Plantago major</i>	Greater Plantain	Plantaginaceae	1996	2009					LC		NATIVE
<i>Plantago maritima</i>	Sea Plantain	Plantaginaceae	1979	2009					LC		NATIVE
<i>Platycleis albimanus</i>		Syrphidae	2015	2015							
<i>Platycleis albopunctata</i>	Grey Bush-cricket	Tettigoniidae	1992	2013		CRDB2				Scarce	NATIVE
<i>Plebejus argus</i>	Silver-studded Blue	Lycaenidae	1994	1994	BAP	CRDB2				Scarce	NATIVE
<i>Plocamium cartilagineum</i>	Cocks Comb	Plocamiaceae	1958	1980							
<i>Plumaria plumosa</i>		Ceramiaceae	1958	1980							NATIVE
<i>Poa annua</i>	Annual Meadow-grass	Poaceae	1979	2015					LC		NATIVE
<i>Poa humilis</i>	Spreading Meadow-grass	Poaceae	1981	2009					LC		NATIVE
<i>Poa infima</i>	Early Meadow-grass	Poaceae	2011	2015		CRDB2	MORE THAN 20 TETRA...	IPA SPE...	LC	Scarce	NATIVE
<i>Poa pratensis</i>	Smooth Meadow-grass	Poaceae	1979	2005					LC		NATIVE
<i>Poa trivialis</i>	Rough Meadow-grass	Poaceae	2005	2009					LC		NATIVE
<i>Podalonia hirsuta</i>	Hairy Sand Wasp	Sphecidae	1984	2015		CRDB2				Scarce	NATIVE
<i>Poecile palustris</i>	Marsh Tit	Paridae	1974	1976	BAP						NATIVE
<i>Pohlia wahlenbergii</i> var. <i>wahlenbergii</i>	Pale Glaucous Thread-moss	Bryaceae	1996	1996							NATIVE
<i>Polycera quadrilineata</i>		Polyceridae	1995	2013							
<i>Polygala serpyllifolia</i>	Heath Milkwort	Polygalaceae	1992	2008					NT		NATIVE
<i>Polygala vulgaris</i>	Common Milkwort	Polygalaceae	1979	2015					LC		NATIVE
<i>Polygonia c-album</i>	Comma Butterfly	Nymphalidae	1992	1994							NATIVE
<i>Polygonum arenastrum</i>	Small-headed Knotgrass	Polygonaceae	2009	2010					LC		ARCHAE...
<i>Polygonum aviculare</i>	Knotgrass	Polygonaceae	1979	2009					LC		NATIVE
<i>Polygonum maritimum</i>	Sea Knotgrass	Polygonaceae	2008	2008		CRDB2	CORNWALL SCARCE (in...	IPA SPE...	VU	RDB	NATIVE
<i>Polygonum oxyspermum</i> subsp. <i>raii</i>	Rays Knotgrass	Polygonaceae	2007	2010			MORE THAN 20 TETRA...		LC		NATIVE
<i>Polydus rotundus</i>	Goat Tang	Polydidae	1958	1980							

1135 taxa

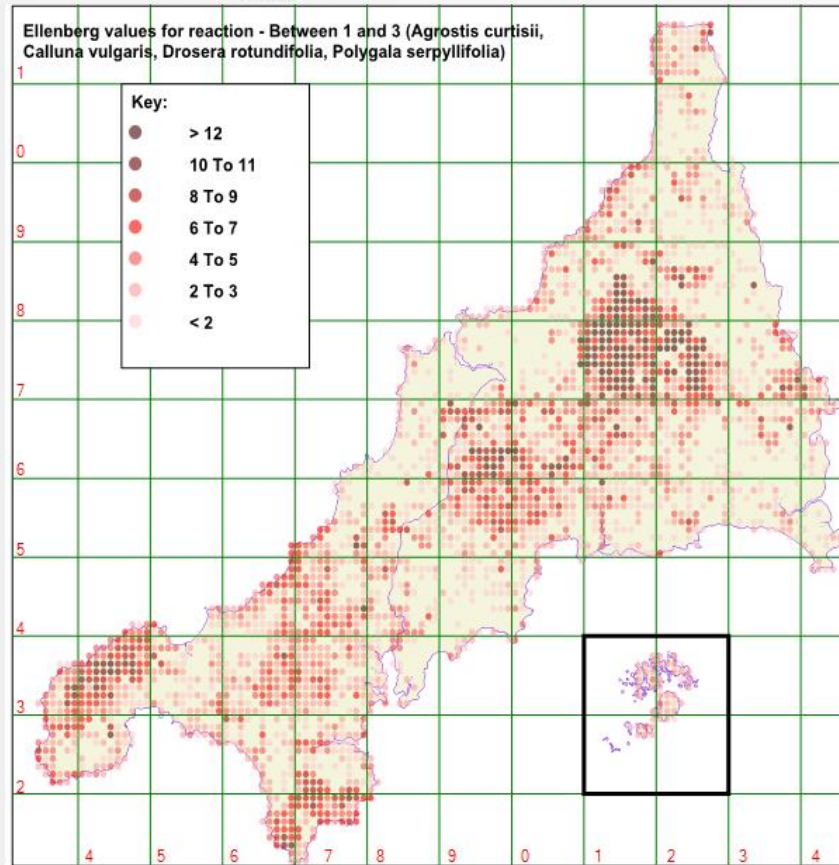
SW71 SW751160 22/08/2016 SW7516 SW71N

11:55 22/08/2016 22/08/2016

Cornish Biodiversity Network

Gis mapping Ellenberg values for reaction - Between 1 and 3 (*Agrostis curtisii*, *Calluna vulgaris*, *Drosera rotundifolia*, *Polygala serpyllifolia*)

File Sites **V** 125k 50k 10k Select Records Options  Rarities PlantAtt Hotspots BryoAtt Key




SW670130 SW676135 22/08/2016 SW3146 SW34 SW34D

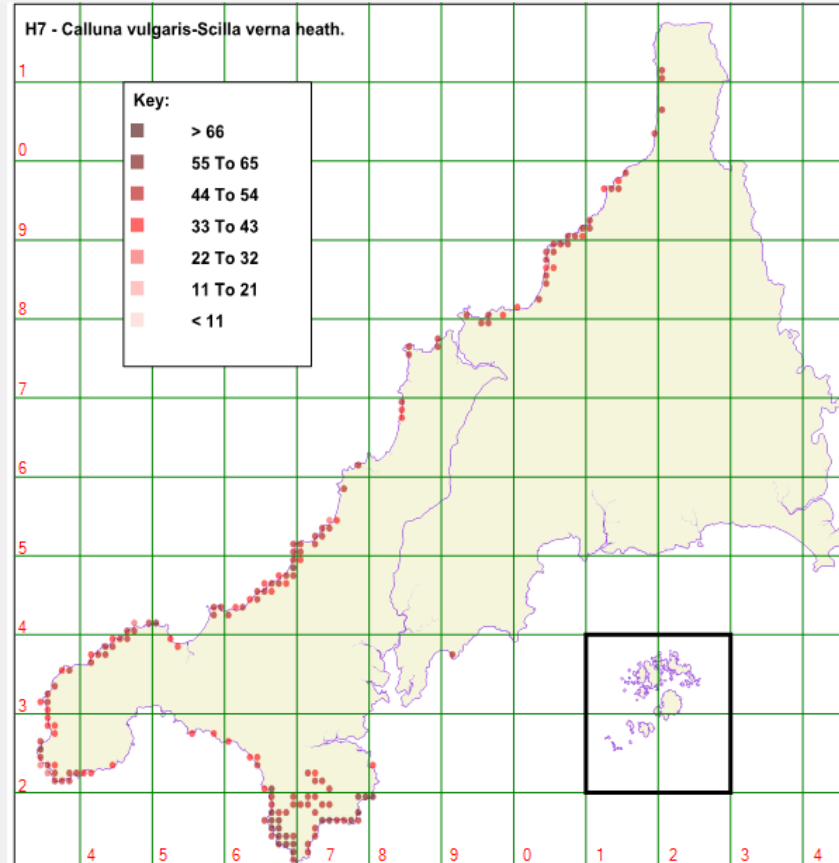


14:56
22/08/2016

Cornish Biodiversity Network

Gis mapping H7 - Calluna vulgaris-Scilla verna heath.

File Sites **V** 125k 50k 10k Select Records Options  Rarities PlantAtt Hotspots BryoAtt Key



SV79 22/08/2016 SW3052 SW35 SW35B





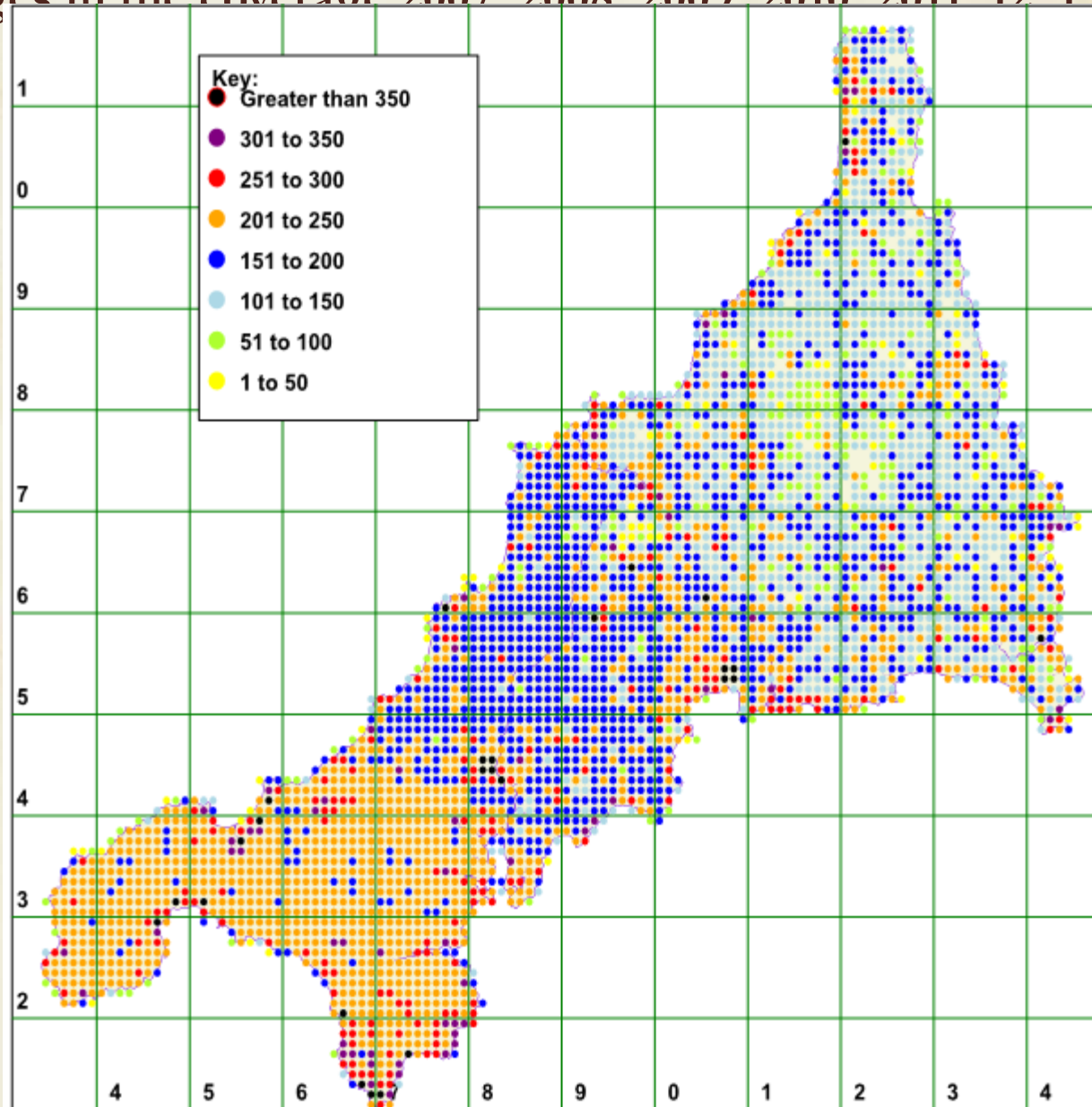
Cornish Biodiversity Network

Cornwall is the most comprehensively and most intensively recorded region in Britain.

The CBN currently holds:

- 3,504,000 plant and animal records.
- 1,921,381 vascular plant records.
- 27,009 taxa.
- 20,402 people have supplied records.
- 14,868 bibliographic sources extracted.

Changes in the coverage 2007 2008 2009 2010 2011 12 13 14, 15 & 16.



Number
of
species
recorded
since
1999





Cornish Biodiversity Network

An over-arching, online database that is designed to fully meet the needs of the biological recording community.

It will overcome the inadequacies of ERCCIS by:

- Financially supporting the recording community.
- Improving the quality and quantity of recording – all data must go through the correct channels.
- Ensuring the recording community have free access to all the data.
- Providing data to a much larger audience – schools & colleges, general public, etc.
- Embodying new technologies – mobile phone and internet.