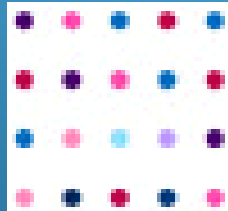


MapMate for Atlas 2020

Jim McIntosh, BSBI Scottish Officer



What is MapMate?

- A program that can be downloaded onto a PC
- That is a simple way to digitise paper **records**
- In our case, records of Vascular Plants (flowering plants, conifers, ferns, fern allies) **and** Stoneworts
- That allows the records to be easily viewed, edited, stored, mapped, analyzed and shared...
- ... and specifically shared with the BSBI MapMate hub which updates the BSBI Database every fortnight



Who can get MapMate?

- All BSBI Recorders are very **welcome** to have a copy – which we will supply for free.
- Anyone contributing records to a BSBI Recorder may be nominated for a free copy.
- Anyone volunteering to digitise records for a BSBI Recorder may also be nominated for a free copy.

We pay the annual licence for all BSBI supplied copies, and can add anyone to our group licence who has come to the BSBI already with MapMate.



When do you use MapMate?

- Recorders should use it as soon after each field recording excursion as possible, to enter the records collected.
- Whenever MapMate notifies you that another MapMate user has sent you MapMate records.
- Whenever MapMate itself notifies you that updates (patches) are available.
- Monthly or at least quarterly to send records to the hub.
- Regularly to back-up your MapMate database!



When wouldn't you use MapMate?

- If you are an irregular contributor of records to a VC Recorder then it's not worth learning to use it.
- Simpler to just enter and supply records in a spreadsheet

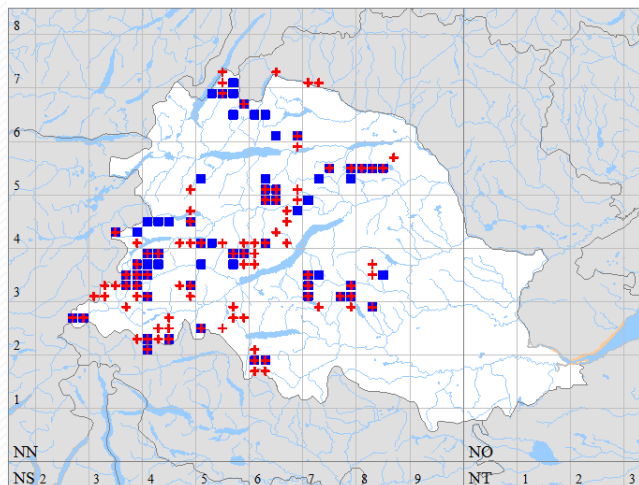
(We can supply spreadsheets which make this easy – and are easy for Recorders to check then import into MapMate.)



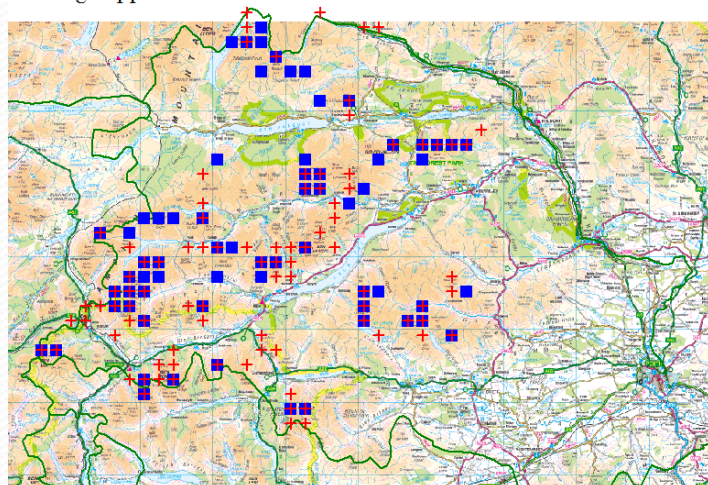
Advantages of MapMate

- Simple to learn to use
- Easy to enter records
- Can easily exchange data with other MapMate users
- Powerful analysis
- Flexible mapping

Saxifraga oppositifolia



Saxifraga oppositifolia



Pre 2000 ■

Post 2000 +



Top Tips: 1. *Before* Entering Data

1. Make sure your card or notebook is fully prepared for data entry.
2. Everything should be legible & all codes and notes fully explained.
3. Ideally all specimens collected should be determined and there shouldn't be any question marks on the card!



2. Starting to enter Data

Enter all the fields except the Taxon & Comment – and double check they are all correct!

Grid Reference		The Name of the Locality																										
NN63--70--		MEALL NA LEITREACH																										
Tetrad																												
Vice County 88		Habitat																										
Date 02092014																												
<table border="1"><tr><td>e</td><td>j</td><td>p</td><td>u</td><td>z</td></tr><tr><td>d</td><td>i</td><td>n</td><td>t</td><td>y</td></tr><tr><td>c</td><td>h</td><td>m</td><td>s</td><td>x</td></tr><tr><td>b</td><td>g</td><td>i</td><td>r</td><td>w</td></tr><tr><td>a</td><td>f</td><td>k</td><td>q</td><td>v</td></tr></table>		e	j	p	u	z	d	i	n	t	y	c	h	m	s	x	b	g	i	r	w	a	f	k	q	v	Recorder(s)	
e	j	p	u	z																								
d	i	n	t	y																								
c	h	m	s	x																								
b	g	i	r	w																								
a	f	k	q	v																								
0 2 4 6 8		JW McIntosh																										
Species	Locality	Grid Reference																										
CAREX CAPILLARIS		NN63991 7065																										
BETULA NATIVA		NN63975 7065																										
SAXIFRAGA ALBA		NN63912 7070																										
LYCOPodium ANNOTINUM		NN63859 70550	732M LARGE PATCH																									
JUNCUS TALICOIDES		NN63829 70345	750M COMPARABLE SPURS WITH CAREX PUL- -SA 30L																									
LYCOPodium ANNOTINUM		NN63930 70218	761M LARGE ENTIRE PATCH.																									

Data Entry: New Record - Vascular Plants (microspecies) and Charophytes in VC88

Records Fields Query Help

Taxon

Quantity Stage

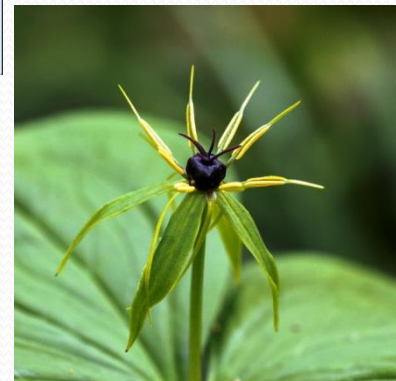
Site

Date Status

Recorder Determiner Method

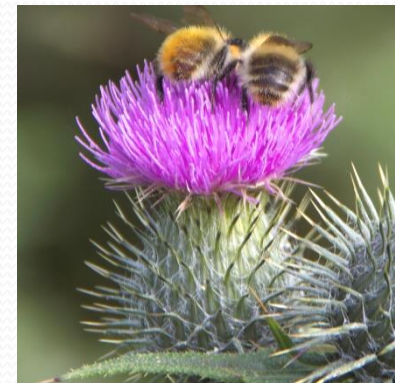
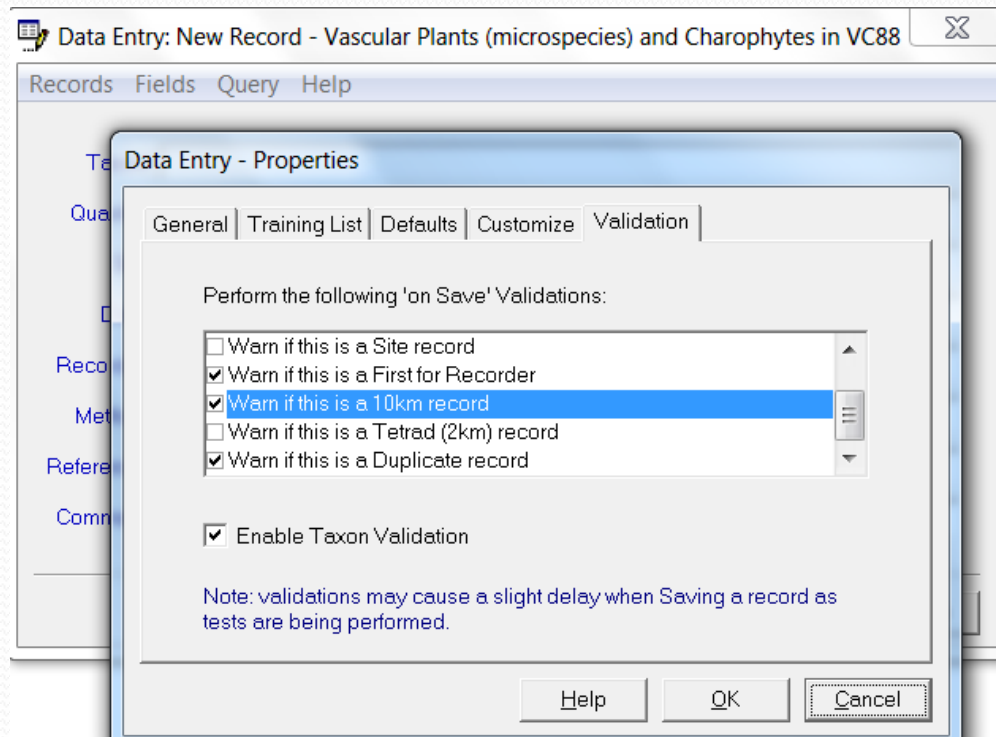
Reference

Comment



3. Set up validation checks

Remember to set up validation checks (Records> Properties > Validation) to warn if record is a new VC, hectad or tetrad record or new for the recorder, or a duplicate.



Regularly list all records entered so far by pressing f5 to bring up a list that matches all valid fields in the Data Entry window.

1480	Arctostaphylos	421	myr	284	Myrica	200	Will	1204	Malv	1463	Phlox
1485	Arctostaphylos	423	myr	284	Myrica	200	Will	1204	Malv	1463	Phlox
1490	Arctostaphylos	424	myr	284	Myrica	200	Will	1204	Malv	1463	Phlox
1495	Arctostaphylos	425	myr	284	Myrica	200	Will	1204	Malv	1463	Phlox
1500	Arctostaphylos	426	myr	284	Myrica	200	Will	1204	Malv	1463	Phlox
1505	Arctostaphylos	427	myr	284	Myrica	200	Will	1204	Malv	1463	Phlox
1510	Arctostaphylos	428	myr	284	Myrica	200	Will	1204	Malv	1463	Phlox
1515	Arctostaphylos	429	myr	284	Myrica	200	Will	1204	Malv	1463	Phlox
1520	Arctostaphylos	430	myr	284	Myrica	200	Will	1204	Malv	1463	Phlox
1525	Arctostaphylos	431	myr	284	Myrica	200	Will	1204	Malv	1463	Phlox
1530	Arctostaphylos	432	myr	284	Myrica	200	Will	1204	Malv	1463	Phlox
1535	Arctostaphylos	433	myr	284	Myrica	200	Will	1204	Malv	1463	Phlox
1540	Arctostaphylos	434	myr	284	Myrica	200	Will	1204	Malv	1463	Phlox
1545	Arctostaphylos	435	myr	284	Myrica	200	Will	1204	Malv	1463	Phlox
1550	Arctostaphylos	436	myr	284	Myrica	200	Will	1204	Malv	1463	Phlox
1555	Arctostaphylos	437	myr	284	Myrica	200	Will	1204	Malv	1463	Phlox
1560	Arctostaphylos	438	myr	284	Myrica	200	Will	1204	Malv	1463	Phlox
1565	Arctostaphylos	439	myr	284	Myrica	200	Will	1204	Malv	1463	Phlox
1570	Arctostaphylos	440	myr	284	Myrica	200	Will	1204	Malv	1463	Phlox
1575	Arctostaphylos	441	myr	284	Myrica	200	Will	1204	Malv	1463	Phlox
1580	Arctostaphylos	442	myr	284	Myrica	200	Will	1204	Malv	1463	Phlox
1585	Arctostaphylos	443	myr	284	Myrica	200	Will	1204	Malv	1463	Phlox
1590	Arctostaphylos	444	myr	284	Myrica	200	Will	1204	Malv	1463	Phlox
1595	Arctostaphylos	445	myr	284	Myrica	200	Will	1204	Malv	1463	Phlox
1600	Arctostaphylos	446	myr	284	Myrica	200	Will	1204	Malv	1463	Phlox
1605	Arctostaphylos	447	myr	284	Myrica	200	Will	1204	Malv	1463	Phlox
1610	Arctostaphylos	448	myr	284	Myrica	200	Will	1204	Malv	1463	Phlox
1615	Arctostaphylos	449	myr	284	Myrica	200	Will	1204	Malv	1463	Phlox
1620	Arctostaphylos	450	myr	284	Myrica	200	Will	1204	Malv	1463	Phlox
1625	Arctostaphylos	451	myr	284	Myrica	200	Will	1204	Malv	1463	Phlox
1630	Arctostaphylos	452	myr	284	Myrica	200	Will	1204	Malv	1463	Phlox
1635	Arctostaphylos	453	myr	284	Myrica	200	Will	1204	Malv	1463	Phlox
1640	Arctostaphylos	454	myr	284	Myrica	200	Will	1204	Malv	1463	Phlox
1645	Arctostaphylos	455	myr	284	Myrica	200	Will	1204	Malv	1463	Phlox
1650	Arctostaphylos	456	myr	284	Myrica	200	Will	1204	Malv	1463	Phlox
1655	Arctostaphylos	457	myr	284	Myrica	2					

1188	zollu	gher	157	224	1433	seo	1891	nenao	2138	
1189	zollu	phor	1943	negu	1437	seo	1899	luc	2140	valer off
1190	zollu	phor	1947	negu	1437	zoriup xyl	1897	luc	2142	valer off
1191	zollu	phor	1948	negu	1437	zoriup xyl	1899	luc	2143	valer off
1192	zollu	phor	1948	negu	1437	zoriup xyl	1899	luc	2144	valer off
1193	zollu	phor	1948	negu	1437	zoriup xyl	1899	luc	2145	valer off
1194	zollu	phor	1948	negu	1437	zoriup xyl	1899	luc	2146	valer off
1195	zollu	phor	1948	negu	1437	zoriup xyl	1899	luc	2147	valer off
1196	zollu	phor	1948	negu	1437	zoriup xyl	1899	luc	2148	valer off
1197	zollu	phor	1948	negu	1437	zoriup xyl	1899	luc	2149	valer off
1198	zollu	phor	1948	negu	1437	zoriup xyl	1899	luc	2150	valer off
1199	zollu	phor	1948	negu	1437	zoriup xyl	1899	luc	2151	valer off
1200	zollu	phor	1948	negu	1437	zoriup xyl	1899	luc	2152	valer off
1201	zollu	phor	1948	negu	1437	zoriup xyl	1899	luc	2153	valer off
1202	zollu	phor	1948	negu	1437	zoriup xyl	1899	luc	2154	valer off
1203	zollu	phor	1948	negu	1437	zoriup xyl	1899	luc	2155	valer off
1204	zollu	phor	1948	negu	1437	zoriup xyl	1899	luc	2156	valer off
1205	zollu	phor	1948	negu	1437	zoriup xyl	1899	luc	2157	valer off
1206	zollu	phor	1948	negu	1437	zoriup xyl	1899	luc	2158	valer off
1207	zollu	phor	1948	negu	1437	zoriup xyl	1899	luc	2159	valer off
1208	zollu	phor	1948	negu	1437	zoriup xyl	1899	luc	2160	valer off
1209	zollu	phor	1948	negu	1437	zoriup xyl	1899	luc	2161	valer off
1210	zollu	phor	1948	negu	1437	zoriup xyl	1899	luc	2162	valer off
1211	zollu	phor	1948	negu	1437	zoriup xyl	1899	luc	2163	valer off
1212	zollu	phor	1948	negu	1437	zoriup xyl	1899	luc	2164	valer off
1213	zollu	phor	1948	negu	1437	zoriup xyl	1899	luc	2165	valer off
1214	zollu	phor	1948	negu	1437	zoriup xyl	1899	luc	2166	valer off
1215	zollu	phor	1948	negu	1437	zoriup xyl	1899	luc	2167	valer off
1216	zollu	phor	1948	negu	1437	zoriup xyl	1899	luc	2168	valer off
1217	zollu	phor	1948	negu	1437	zoriup xyl	1899	luc	2169	valer off
1218	zollu	phor	1948	negu	1437	zoriup xyl	1899	luc	2170	valer off
1219	zollu	phor	1948	negu	1437	zoriup xyl	1899	luc	2171	valer off
1220	zollu	phor	1948	negu	1437	zoriup xyl	1899	luc	2172	valer off
1221	zollu	phor	1948	negu	1437	zoriup xyl	1899	luc	2173	valer off
1222	zollu	phor	1948	negu	1437	zoriup xyl	1899	luc	2174	valer off
1223	zollu	phor	1948	negu	1437	zoriup xyl	1899	luc	2175	valer off
1224	zollu	phor	1948	negu	1437	zoriup xyl	1899	luc	2176	valer off
1225	zollu	phor	1948	negu	1437	zoriup xyl	1899	luc	2177	valer off
1226	zollu	phor	1948	negu	1437	zoriup xyl	1899	luc	2178	valer off
1227	zollu	phor	1948	negu	1437	zoriup xyl	1899	luc	2179	valer off
1228	zollu	phor	1948	negu	1437	zoriup xyl	1899	luc	2180	valer off
1229	zollu	phor	1948	negu	1437	zoriup xyl	1899	luc	2181	valer off
1230	zollu	phor								



5. Synching

Remember that synching is ALWAYS a two step process!

To send data:

1. Create synch file after setting up synch partner & filters
2. Send it to them

You get confirmation email (if successfully received).

To receive data:

1. Download synch file
2. Synch it into your MapMate database

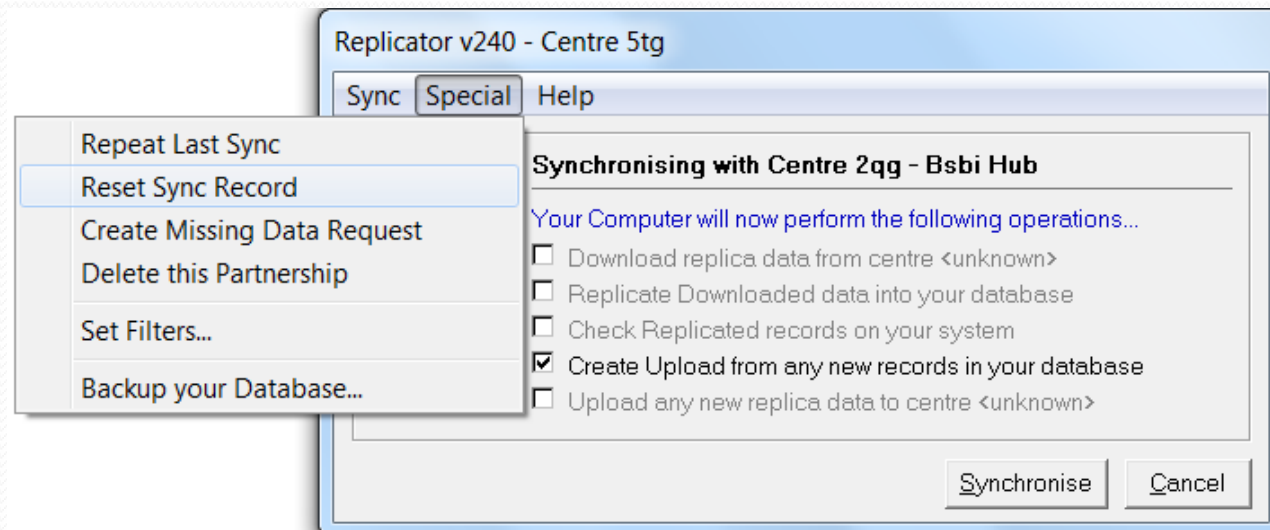
You send confirmation email.



6. Regularly Reset Synch

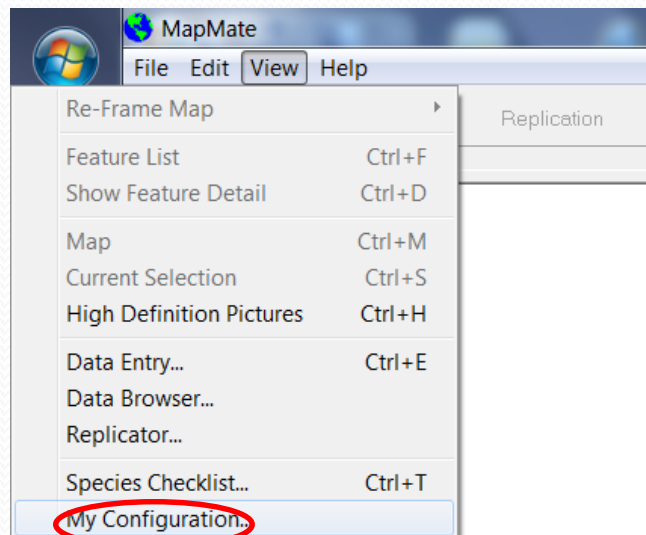
Its important to regularly reset synch with partners – especially hub – and resend all your data.

Replication > Special > Reset Synch Record



7. Keeping up to date

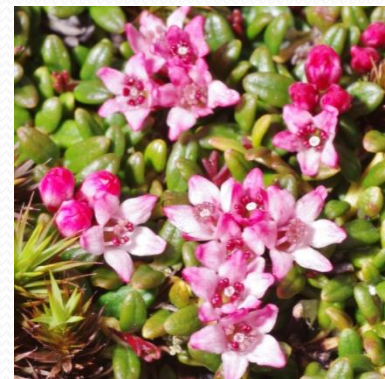
1. When you get an email alert that a new patch or patches have been issued, you ought to download them. Follow the instructions given.
2. Then synch them into your database.
3. Then you MUST go through View> My configuration:



8. Backing-up

How often? – just think of having to re-enter all the data since your last back-up! So after **every** data entry session!

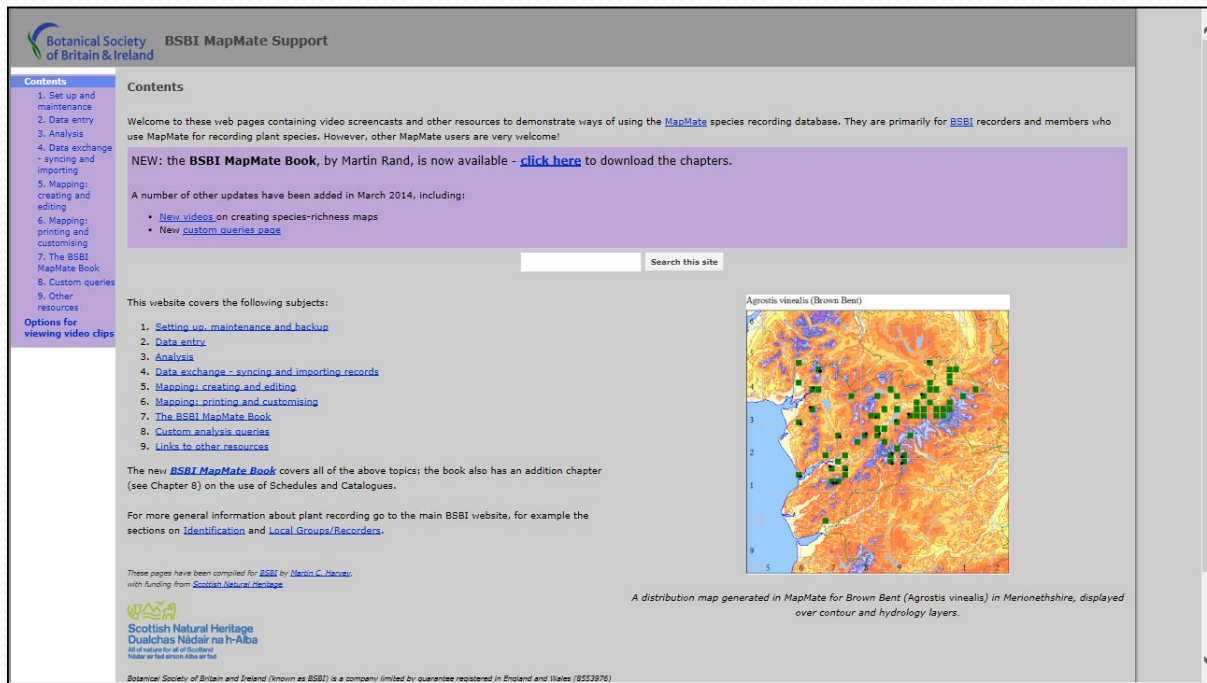
Best way to do it is to copy entire “My MapMate” folder onto a pen drive.



More information on MapMate

- On the MapMate site and in MapMate's own "Help" files.
- On the BSBI MapMate website* mainly as short videos.
- Also in the BSBI MapMate Handbook - on BSBI MM site.

*Google "BSBI MapMate"



Botanical Society of Britain & Ireland BSBI MapMate Support

Contents

1. Set up and maintenance
2. Data entry
3. Analysis
4. Data exchange - syncing and importing
5. Mapping: creating and editing
6. Mapping: printing and customising
7. The BSBI MapMate Book
8. Custom queries
9. Other resources

Options for viewing video clips

Contents

Welcome to these web pages containing video screencasts and other resources to demonstrate ways of using the [MapMate](#) species recording database. They are primarily for [BSBI](#) recorders and members who use MapMate for recording plant species. However, other MapMate users are very welcome!

NEW: the BSBI MapMate Book, by Martin Rand, is now available - [click here](#) to download the chapters.

A number of other updates have been added in March 2014, including:

- [New videos](#) on creating species-richness maps
- [New custom queries page](#)

Search this site

This website covers the following subjects:

1. [Setting up, maintenance and backup](#)
2. [Data entry](#)
3. [Analysis](#)
4. [Data exchange - syncing and importing records](#)
5. [Mapping: creating and editing](#)
6. [Mapping: printing and customising](#)
7. [The BSBI MapMate Book](#)
8. [Custom analysis queries](#)
9. [Links to other resources](#)

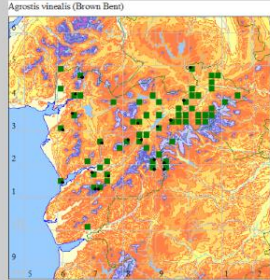
The new [BSBI MapMate Book](#) covers all of the above topics; the book also has an addition chapter (see Chapter 8) on the use of Schedules and Catalogues.

For more general information about plant recording go to the main BSBI website, for example the sections on [Identification](#) and [Local Groups/Recorders](#).

These pages have been compiled for BSBI by [Martin C. Harvey](#) with funding from [Scottish Natural Heritage](#)

Botanical Society of Britain and Ireland (known as BSBI) is a company limited by guarantee registered in England and Wales (8553976)

Agrostis vinealis (Brows Bent)



A distribution map generated in MapMate for Brown Bent (*Agrostis vinealis*) in Merionethshire, displayed over contour and hydrology layers.



Questions?

