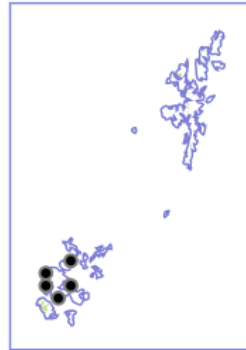
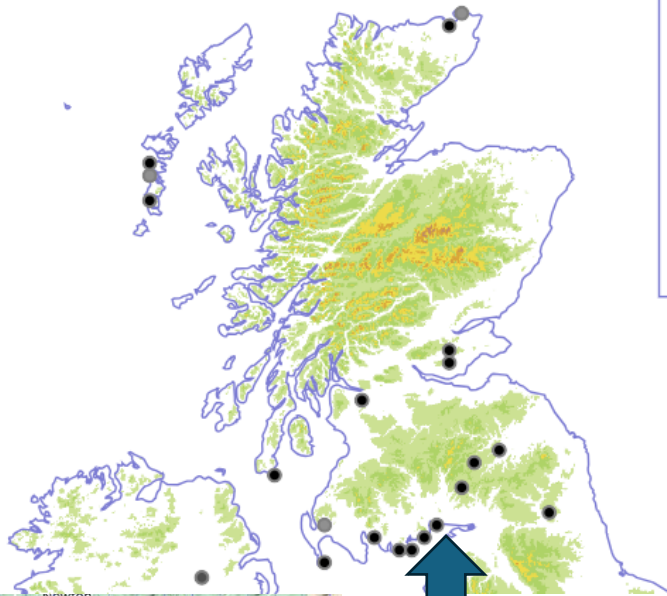


	GB	IR
2000–19	● 22	0
1987–99	● 15	1
1970–86	● 14	1
1930–69	● 9	1
pre-1930	○ 4	1



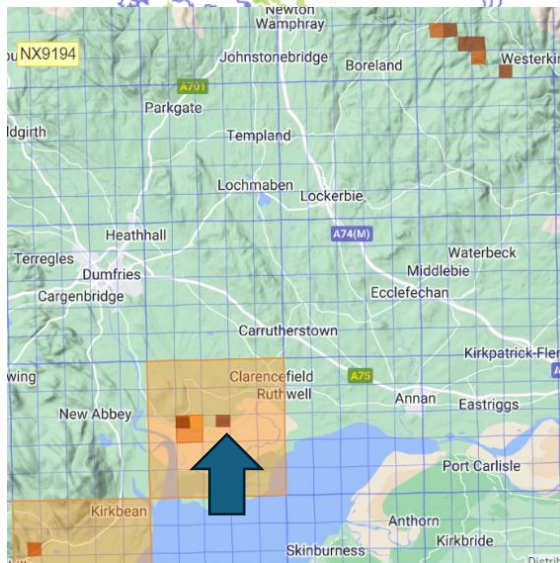
Holy-grass

Hierochloa odorata

(L.) P.Beauv.

A rhizomatous perennial grass of wetland habitats, including lakeside reedbeds, sedge swamps, willow-carr, riverbanks and wet meadows; also, in south-western Scotland, at the base of coastal cliffs where streams emerge and along the upper edge of fringing saltmarshes. 0–300 m (Clearburn Loch, Selkirkshire).

Native in Britain and Ireland.



Holy-grass *Hierochloa odorata*. A new population at Caerlaverock WWT Reserve April 2024.

The arrows show the location of the site locally on the DDb map and against the UK and Irish population in the Atlas 2020 map.



Habitat at Caerlaverock WWT Reserve where new colony was found



Holy-grass at Caerlaverock WWT Reserve May 2024

Dave Pickett Reserve Manager for WWT at Caerlaverock thought he might have found **Holy-grass** *Hierochloa odorata* amongst the gorse where they were digging pools for Natterjack toads. I went to look and confirm this was indeed a new population of **Holy-grass** extending over an area 100m x160m. It is within the SSSI and NNR boundary and about 3km east of a population on the seaward side of Castle Wood. The colony is safe from new excavations and light grazing keeps open conditions.