



# Welsh Bulletin

No. 112

August 2023



**Editors: Richard Pryce, Sally Whyman & Katherine Slade**





2



3



4

**Alpine Garden**

The alpine garden is a collection of plants from the high mountains of the Breidden Hills. The plants are chosen to represent the diversity of the alpine flora, from the low-growing, succulent-like plants to the tall, grassy species. The garden is designed to provide a glimpse of the natural environment of the Breidden Hills, and to allow visitors to see the plants in their natural habitat.



**Breidden Hills SSSI**

The Breidden Hills are a Site of Special Scientific Interest (SSSI) in the Breidden Hills area of the Breidden Hills. The site is designated for its geological and geomorphological interest, and for its scientific and educational value. The Breidden Hills are a unique landscape, and the SSSI status helps to protect and conserve the site for future generations.

The Breidden Hills are a Site of Special Scientific Interest (SSSI) in the Breidden Hills area of the Breidden Hills. The site is designated for its geological and geomorphological interest, and for its scientific and educational value. The Breidden Hills are a unique landscape, and the SSSI status helps to protect and conserve the site for future generations.

# Contents

Editorial, <i>S.P.Whyman</i> .....	4
Jim Davies.....	5
Correction to issue 111, February 2023.....	5
Wales Launch for Atlas 2020, <i>K.McGinn</i> .....	5
BSBI Award 2022, <i>D.Williams</i> .....	6
Hermon Copper Bog (Meirionnydd) site visit November 2022, <i>H.Garrett</i> .....	7
Breidden Hills display at the National Botanic Garden of Wales, <i>K.Thorne</i> .....	9
Notes on a Flora for Denbighshire, <i>D.Williams</i> .....	11
Welsh Plant Records 2023.....	15

Images 1-3: see article on page 7. Photos © Heather Garrett.

Front cover, image 1: Hermon copper bog workings in November 2022.

Page 2, Image 2: *Silene uniflora* (Sea Campion) growing at an altitude of 190 m at Hermon copper bog. The only inland Meirionnydd record for this species.

Image 3: *Sabulina verna* (Spring Sandwort), growing on bare soils that were laced with the heavy metals at Hermon copper bog.

Image 4. Breidden Hills display at the National Botanic Garden of Wales. © NBGW. See article on page 9.

---

Items for inclusion in the next Welsh Bulletin should be sent to Richard Pryce by 1 Dec 2023. Editors: *Richard D. Pryce*, Trevethin, School Road, Pwll, Llanelli, Carmarthenshire, SA15 4AL [PryceEco@aol.com](mailto:PryceEco@aol.com). *Sally Whyman* ([sally.whyman@museumwales.ac.uk](mailto:sally.whyman@museumwales.ac.uk)) and *Katherine Slade* ([katherine.slade@museumwales.ac.uk](mailto:katherine.slade@museumwales.ac.uk)), Dept. Natural Sciences, Amgueddfa Cymru-National Museum Wales, Cathays Park, Cardiff, CF10 3NP.

See [bsbi.org.uk/wales](http://bsbi.org.uk/wales) for back issues. Printed versions of some back issues are still available on request.



# Editorial

*Sally Whyman, Curator of Botany, Amgueddfa Cymru*

This year we not only celebrated National Meadow's Day on 1st July, but we also celebrated ten years of our Urban Meadow at Amgueddfa Genedlaethol Caerdydd. We marked the day with the Celebration of Nature event at Sain Ffagan Amgueddfa Werin Cymru where visitors could learn the skills used in the herbarium to make their own identification booklets.

Initial funding from the Cemex Community Fund has allowed our Urban Meadow to go from an area of "species poor amenity grassland." (Biodiversity Survey, AC-MW, 2009) to the creation of a meadow with over 56 plant species recorded in the last survey (Biodiversity Survey, AC-MW, 2021).

Plants such as *Lotus corniculatus* (Common Bird's-foot-trefoil), *Leucanthemum vulgare* (Oxeye Daisy), *Galium verum* (Lady's Bedstraw) and *Trifolium pratense* (Red Clover) add colour to this part of the city every summer, joined by Mallard ducks and a grass snake looking for some shelter. Exotic looking *Ophrys apifera* (Bee Orchids) appear (image 7, inside back cover) in flower in late May/early June every year too. By July the meadow is buzzing with insect life and birds looking to eat those insects and seeds (image 8, inside back cover), joined by honeybees from hives on the Museum roof. It's only a short flight for them to collect nectar and pollen from the Urban Meadow during the summer months.

During the Covid 19 lockdowns the meadow carried on without many people to see it or staff and volunteers to help maintain it, meaning some of the grasses have now taken over. Smaller flowering plants can't compete against the more robust grasses such as *Alopecurus pratensis* (Meadow foxtail), *Dactylis glomerata* (Cock's-foot) and *Phleum pratense* (Timothy). On the damper corner *Holcus lanatus* (Yorkshire-fog) is dominating. These may well all be native grasses, but we don't want too many. To allow the non-grasses space to grow seeds of *Rhinanthus minor* (Yellow-rattle) (image 6, inside back cover) will be sown this autumn. This annual plant is a parasite on grass roots. The seeds need to sit in the soil during the winter and experience the cold to germinate, yellow flowers appear in spring, followed by rattling seed pods.

The Urban Meadow hasn't just been an opportunity to increase biodiversity at Cathays Park by making it a nice place for plants and animals to live, it has helped people too. Staff and volunteers have been joined by many local school and community groups who have visited the meadow to learn about this city habitat. They have helped us to sow seed and plant small plants, mow and



generally tidy up. One group even found a horseshoe! Lucky perhaps for the person who found it, but not for the horse who lost it!

#### References

Biodiversity Survey of Vascular Plants Amgueddfa Genedlaethol Caerdydd  
National Museum Cardiff, Cathays Park, Cardiff, 2009. AC MW, 6pp.

Biodiversity Survey of Vascular Plants Amgueddfa Genedlaethol Caerdydd  
National Museum Cardiff, Cathays Park, Cardiff, 2021. AC MW, 25pp.

## Jim Davies notice

Naturalist Jim Davies (James Noel Davies) died aged 86 on 17 June 2023. We will remember Jim in the next issue of the bulletin.

## Correction to issue 111, February 2023

The Monmouthshire Report on Arable Plants article attributed to Steph Tyler, was also written by Elsa Wood.

## Wales Launch for Atlas 2020

*Kevin McGinn, NBGW Curator - Seed Bank and Herbarium*

On 10<sup>th</sup> March, the National Botanic Garden of Wales (NBGW) hosted a Wales Launch for Atlas 2020 (see image 9 on the back cover). Refreshments, including an Atlas-themed cake and cupcakes expertly made by Pippa Bonner, created a celebratory feel and were enjoyed by all. Joint Vice County Recorder for Merionethshire, Heather Garrett, was chosen at random to be the lucky person to cut the cake. The event was chaired by Chair of the Wales Committee of BSBI, John Palmer.

An introduction by BSBI CEO Julia Hanmer was followed by a series of short talks: botanist Dr Trevor Dines spoke about atlases past and present, a recorded talk by BSBI Head of Science Dr Kevin Walker introduced the current atlas, and Botanist, Mycologist & Lichenologist Ray Woods then provided insightful comments about trends and future directions. This was followed by a Q&A session, and closing words from NBGW Director, Dr Lucy Sutherland.

Despite inclement wintery weather affecting the north, around 50 people managed to attend in person (see image 10 on the back cover), including BSBI staff, Vice County Recorders, members and varied representatives from the conservation sector, records centres, Amgueddfa Cymru and NBGW. A hybrid option provided a chance for those unable to attend in-person to view the talks. After a lunch break, many attendees joined a behind the scenes tour of NBGW's native flora horticulture, seed bank, herbarium and research work, or a tour around the restored landscape and Waun Las National Nature Reserve.

Hard copies of the Atlas were kindly donated by the BSBI to NBGW's library, which is open to all by appointment. Pictured in image 11 on the back cover are BSBI CEO Julia Hanmer (left) and NBGW Director Dr Lucy Sutherland (right).

## BSBI Award 2022

An outstanding contribution to botany in your area (county, region or country)

Martyn O. Stead

*Delyth Williams, Vice-county Recorder Denbighshire*

The BSBI wants to widen its scope for recognising the many exceptional things that its members do to support and enthuse their fellow botanists. To this effect two new awards have been inaugurated, to be given annually. Each recipient will receive a certificate and their name will be placed on the Awards page of the BSBI website.

One award is for 'An outstanding contribution to botany in your area (county, region or country)' and the other for 'An outstanding contribution to British and Irish Botany'. For more details, see the most recent BSBI News (no.153).

I am pleased to report that one of these first awards has been given to Martyn Stead, whom many of you will know. Martyn lives in Chester and has contributed enormously to its flora, more recently along the canals during the covid years but significantly in Denbighshire v.c.50 over a good many years when we were 'square-bashing' avidly for Atlas 2020. His input in Caernarvonshire v.c.49, Flintshire v.c.51, Anglesey v.c.52, Merioneth v.c.48 and Carmarthenshire v.c.44 is no less impressive.

This honour is very well-deserved.

From BSBI News No. 153 April 2023 page 66



# Hermon Copper Bog (Meirionnydd) site visit November 2022

*Heather Garrett, Joint Vice-county Recorder for Meirionnydd v.c.48*

The extent of Hermon Copper Bog (SH740255) is less than 7 ha, and it is owned and managed by Natural Resources Wales (NRW). See image 1 on the front cover and image 5 showing the site boundary below. The site, also known as Dolfrwynog Bog and Turf Copper Mine, was last surveyed in 2014 by the NRW Lowland Peatland team. These surveyors commented that:

*... "Hermon Copper Bog has long been of interest to geologists, ecologists and botanists and has been subject to scientific study for decades (e.g. Henwood, 1857; Farago et al., 1980; Andrews & Fuge, 1986; Price & Abrahams, 1994; Brewin et al., 2003; SSSI citation) – this is truly a Site of Special Scientific Interest" (NRW, 2015).*

With such a statement how could the Meirionnydd Naturalists Group resist updating some of the botanical records?

Travelling between Dolgellau and Trawsfynydd, it would be easy to dismiss the extensive Coed y Brenin forestry plantation for its lack of botanical interest,

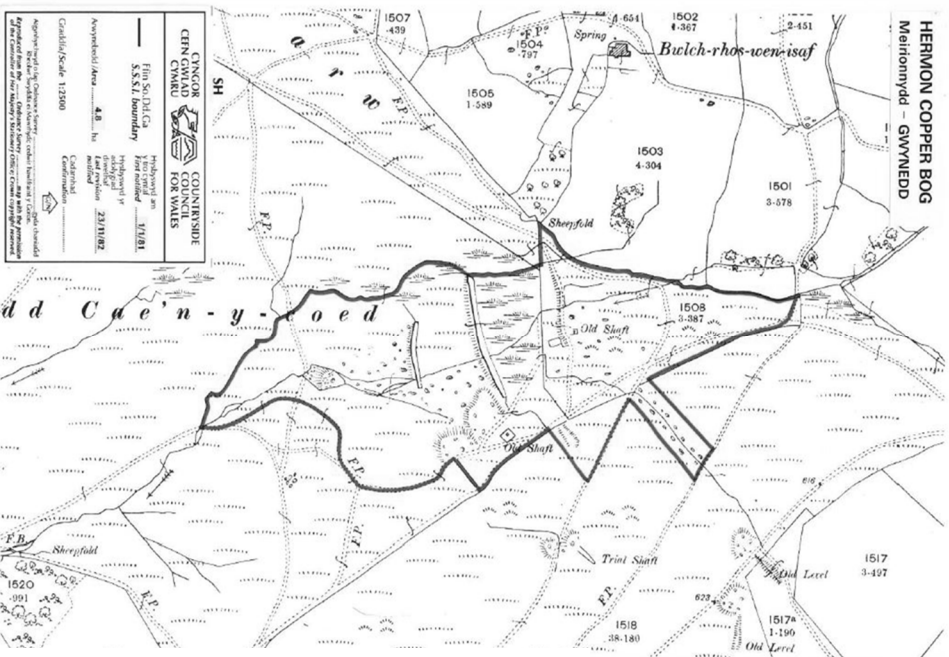


Image 5: Boundary of Hermon Copper Bog

however, within the eastern flank of its industrial conifer landscape stands this small and intriguing area of waterlogged copper-rich peat which was once the centre of a different industry. In the 1850s, the Victorians stripped and transported tons of this peat to Swansea where it was burned to extract the precious metal. It was a lucrative business, which in one year, for example, produced 2000 tons of ash at a profit of £20,000 (NRW, 2015). The ruins of the old workings are still visible although only 25% of the original semi-natural habitat remains.

The site was notified in 1981 as a SSSI for its geo-botanical interest of copper-indicative plants (Countryside Council for Wales, 1982). Such is the concentration of metals in the soils and water that there are reports of leaves on living plants having a thin surface coat of bright metallic copper. These conditions and their adapted plant communities arise from the underlying geology which, in addition to copper, produces ground waters rich in metals such as molybdenum, zinc, cobalt, silver and gold. It's a misnomer to call the site a bog because the composition of the plant communities conforms more to fens fed by either groundwater or rainwater (NRW, 2015) but nothing about this site is typical!

Our group visited in November 2022 after almost 10 months of near-drought conditions. My fear that the site would be dried out was unfounded and we were delighted to see *Armeria maritima* (Thrift) and *Silene uniflora* (Sea Champion) (see image 2, page 2) growing inland at an altitude of 190 m. This is the only inland Meirionnydd record for *A. maritima* (BSBI, 2023) and *S. uniflora* is Scarce in this vice-county (Stille, 2014). The adaptations that enable these species to tolerate salt seem to help them to develop a high tolerance for copper as well (Countryside Council for Wales, 2007). The SSSI citation mentions other Merionethshire Rare Plant Register species but we were not able to find them so late in the season: *Ophioglossum vulgatum* (Adder's-tongue), *Platanthera bifolia* (Lesser Butterfly-orchid), *Epipactis helleborine* (Broad-leaved Helleborine) and *Dactylorhiza purpurella* (Northern Marsh-orchid).

In addition, we noted many discrete clumps of *Sabulina (Minuartia) verna* (Spring Sandwort), some of which were flowering (see image 3 on page 2). This species is Rare in Meirionnydd and has Near Threatened status on the UK scale (Stille, 2014). It was growing on bare soils that were laced with the heavy metals that make the substrate inhospitable to other non-metallophyte species.

This designated site is surrounded by publicly owned forestry plantations which are the source of the self-seeded *Picea sitchensis* (Sitka Spruce) saplings which are impacting the condition of its plant communities.



Field trip participants were: John Clayfield, Joanna Clark, David Elias, Gill Foulkes, Peter Foulkes, Andrew Graham, Mari Roberts and Heather Garrett.

## References

BSBI. (2023). *Armeria maritima* *Meirionnydd* records. [BSBI distribution database download 14 March 2023].

Countryside Council for Wales (CCW). (1982). *Hermon Copper Bog SSSI citation*.

CCW. (1982). *Hermon Copper Bog SSSI boundary map*.

CCW. (2007). *Hermon Copper Bog SSSI Site Management Statement*.

Natural Resources Wales (NRW). 2015. SH72/04P Hermon Copper Bog Lowland Peatland Survey Site Report. Unpub.

Stille, S. (2014). Merionethshire Rare Plant Register. BSBI.

## Breidden Hills display at the National Botanic Garden of Wales

*Kate Thorne, joint vice-county record for Montgomeryshire, v.c.47*

The board in front of the display states the following:

*'Just north of Welshpool is one of Wales richest botanical sites. Breidden Hill Site of Special Scientific Interest is home to some of the rarest species in Wales and this display represents plant species that grow there.*

*The complex geology of the site makes it rich in rare flowers with acid loving plants growing close to plants that thrive in alkaline conditions.*

*Welsh botanists have been excited about its rare plants since Edward Llwyd first wrote about its rare plants in 1689. Unfortunately, greedy Victorian plant hunters and extensive 20<sup>th</sup> century tree planting restricted the range of the surviving plants. Many of the major roads in Britain contain crushed dolerite from Breiddens Criggion Quarry but the rock shelves left exposed by quarrying have proven to be a safe refuge for many of the rarest plants.*

*The Garden is now working with the current quarry owners, Hanson Aggregates, to actively conserve many of these rare flowers by growing new plants from seeds collected on Criggion Quarry'.*

In 2015, I was contracted to collect seeds for 2 years from the rarities and their associates on Breidden Hill, Montgomeryshire (v.c.47). My main assistant was John Thorne. Seed collection was largely on the natural west and south crags but Simon Cope and Nicola Wheeler, using their climbing gear, collected *Potentilla*

*rupestris* (Rock Cinquefoil) and *Silene (Lychnis) viscaria* (Sticky Catchfly) seeds from the northern 'benches' (rock shelves) on which a restoration trial was attempted in the 1980's.

Several visits were required to try and get ripe seeds from each selected species. Seed was collected from the following species (those in bold type can be seen in image 4 on page 2).

The three rarities included *Potentilla rupestris*, *Silene (Lychnis) viscaria* and *Veronica spicata* (Spiked Speedwell).

Associates included *Teucrium scorodonia* (Wood Sage), *Scabiosa columbaria* (Small Scabious), *Pilosella peleteriana* ssp. *subpeleteriana* (Shaggy Mouse-ear-hawkweed), *Geranium sanguineum* (Bloody Crane's-bill), *Hieracium cinderella* (Long-bracted Hawkweed), *Hieracium lasiophyllum* and similar, *Thymus polytrichus* (*T. drucei*) (Wild Thyme), *Petrosedum (Sedum) forsterianum* (Rock Stonecrop), *Origanum vulgare* (Wild Marjoram), *Erica cinerea* (Bell Heather), *Helianthemum nummularium* (Common Rock-rose) and *Festuca ovina* (Sheep's - fescue).

The *Potentilla* was also collected (separately) from our garden; these plants had come indirectly from seed collected at the quarry in the 1980s (for the same purpose i.e. for reseeding areas where quarrying had finished), via a previous Vice-County Recorder.

A single *Rosa spinosissima* (Burnet Rose) hip (3 ripe seeds) was also collected from the nearby Blodwell Rocks, as no hips were seen on the Breidden plants.

The seed collection was overseen by Andy Shaw (AS) back at the Garden who was to be in charge of growing them on. In March 2017 we drove down to the Garden to deliver our load (we are only talking grams here!) to Andy. With Simon due to take on further seed collecting at the quarry – it seemed more appropriate to have someone younger, and with climbing gear - my part in this project ended at this point!

The main reason for the seed collection was to grow these plants on at the Garden in order to produce more seed which would eventually be planted back at the quarry in areas where quarrying had finished. Although planting seed and/or plants on the rock benches was initially envisaged, it was realised that any planting of rare plants or their seed would require a more careful selection of locations with Andy advising, for example, exposed rocky crags with shallow summer friable soil, as well as much aftercare work, at least in the first two years.



There must be a sequel to the above, but we do know, from Kevin McGinn, that the spare seed is being stored long-term in the seed bank.

## Notes on a Flora for Denbighshire

*Delyth Williams, vice-county recorder v.c.50 Denbighshire*

At the time of writing there is no flora for v.c.50 Denbighshire. Although Jean Green, my predecessor as Vice-County Recorder, compiled a checklist of plants (Green, 2006) and I released in 2022 an updated Rare Plant Register (RPR) for the county, the nearest we have published to date is a couple of papers written over a century ago by Dallman (1911, 1913).

Dallman had '*a view to the preparation of a joint flora of Flint [v.c.51] and Denbigh*' and wrote '*I find I have in no way over-estimated the difficulty of such an undertaking*'. More than a hundred years later, my sentiments entirely.

Arthur Augustin Dalman was a well-known and well-respected botanist, edited the *North Western Naturalist* for its entire history from 1926 to 1955 and got a good way towards a Flora of Flintshire but was not able to complete his aim of a flora for Denbighshire. The two papers make fascinating reading, not least for his comments:

In 1910 he spent three weeks in August in Cyffylliog, a small village outside Ruthin, (SJ0557) '*this being near the middle of the county*' and a week in the Tanat Valley (Llanrhaeadr-ym-Mochnant SJ1226) '*A bicycle was taken.....but owing to the hill country and the wretched nature of the by-roads, this was of less advantage than I had anticipated.....during the time I covered a distance of approximately 750 miles...*'

In 1912 he spent a fortnight in Llansannan (SH9365) where '*there is a wild and somewhat dreary expanse of country, where habitations are few and far between, and where a stranger or tourist is rarely seen*'.

On the other hand, many of the records in the papers are from '*districts that have long been favourite resorts of the plant collector [sic] and botanists*' - such as Llangollen and Colwyn Bay.

His notes show that he was acutely aware of the dangers of plant collectors; he comments on *Asplenium ceterach* (Rustyback fern): '*I am informed that this formerly grew on a wall between Mochdre and Llandudno Junction, but was exterminated by collectors*' and for other plants such comments as '*Recorded*

from three Denbighshire stations, which it is undesirable to specify' are helpful in indicating their rarity at that time. (NB it is heartening to know that there is a record from 2015 for *A. ceterach* in Mochdre SH8278 (McCarthy & Stead, 2015)).

About 50 recorders contributed to the papers, either personally or via herbaria.

There are 4525 records in the papers from 1911 and 1913:

1860 were taken by Dallman himself,

686 by the Harnaman brothers (of Derwen and Alvanley),

675 by the Thomas family of Chester,

270 by Dr W.B. Russell, Colwyn Bay, and

268 from the Ruddy family and Hb.

The earliest record was taken in 1808 from S. Hailstone's herbarium.

Various herbaria were consulted, notably Miss E Potts and Rev. J Harris, both from Chester, Miss E. Foulkes Jones, Llansilin and Miss E.M. Wood, Llansannan.

He does not include bibliographical sources of information.

He records the taxon, the recorder, the date if from an herbarium, the location (of varying degrees of precision), occasional comments on quantity, distribution and veracity.

I fell to wondering to what extent are these taxa extant – or not. He wrote '*The list only represents a small proportion of the material*' and '*I have omitted the commoner plants*' – but are they here now? And if so, in what quantity and at what distribution?

It is difficult to make valid comparisons between today's records and these lists, taken as they were from a fairly restricted number of locations and relatively few in number.

Having transcribed the records from both papers, this is what emerges:

- 4525 records were included
- 668 taxa were recorded

The table on page 13 shows the number of native, archaeophyte and other (i.e. any taxon not native or archaeophyte) taxa recorded.

It compares these with their current rarity status in v.c.50.

- Rare – taxa currently occurring in 3 or fewer monads (1km sq.) since 2000.
- Scarce – taxa currently occurring in 4 to 10 monads since 2000.
- Near Scarce – taxa currently occurring in 11 to 30 monads since 2000.

Status/Rarity	Rare	Scarce	Near Scarce	Present	Last seen			Not in DDB	Total taxa recorded
					1830 to 1916	1943 to 1979	1986 to 1995		
Native	55	81	108	208	7	7	8	2	476
Archaeophyte	9	11	12	34	6	3	5	1	81
Other				98	7	1	2	3	111
Total									668

Table: Number of native, archaeophyte and other taxa recorded from Denbighshire in Dallman's papers, published in 1911 and 1913.

Of the 668 taxa recorded, 83% are native or archaeophyte.

Of the 476 native taxa, 244 (52%) are in the Rare Plant Register (RPR) for v.c.50.

Of the 81 archaeophytes (i.e. ancient introductions) 32 (40%) are in the RPR.

For the majority of these taxa, although we know they are the 'less common' it is difficult to know how rare or scarce they were at that time. Some were and still are: *Aegonychon purpureocaeruleum* (Purple Gromwell) '*in quantity, in one station only, which I do not specify*' (Dallman 1913); *Dryopteris submontana* (Rigid Buckler-fern) '*in one inland station on limestone*' (Dallman 1913); *Ophrys insectifera* (Fly Orchid) '*Dr Russell informs me that he had an undoubted specimen of Fly Orchis sent him time ago. This solitary record of its occurrence in Denbighshire refers to a station in the northern portion of the county*' (Dallman 1911); *Ranunculus baudotii* (Brackish Water-crowfoot) Llandudno Junction. W. Hodge, 1913 (single record). These plants are still to be found in these same sites and nowhere else in v.c.50.

Some, given the number of records, were clearly not rare nor probably scarce: *Cynoglossum officinale* (Hound's-tongue) 13 records from widely disparate sites; *Genista tinctoria* (Dyer's Greenweed) eight records; *Serratula tinctoria* (Saw-wort) ten records. These plants, since 2000, have each been found in only three sites or fewer.

Suffice it to say that over half of the native taxa recorded then and 40% of the archaeophytes have a significant rarity status now.

And what of losses? 45 taxa in the records have not been recorded since 1995, some of them not for a very long time before that. Nine of the records are

herbarium specimens dating from 1830 to 1909, four native, two archaeophyte and three neither.

Of the 476 native taxa, 5% have not been recorded since 1995.

Of the 81 archaeophyte taxa, 19% have not been recorded since 1995.

Of the 668 taxa recorded, six have not been found on the BSBI database. One of these is *Galatella linosyris* (syn. *Aster linosyris*) (Goldilocks Aster), for which there is one record about which Dallman writes in 1911, '*formerly occurred in one coast station, but is probably now extinct*'.

What of the 'Others'? 17% of the records are neophytes, introductions, garden escapes or casuals: an eclectic mix from the well-established which remain in evidence today to the fleeting and exotic, never seen since, but making interesting reading in their own right. *Petroselinum crispum* (Garden Parsley) '*in quarry by Henllan Church*' (1913) Miss C.E. Ruddy and *Cheiranthus cheiri* (Wallflower) '*rocks and walls about Denbigh Castle*' (1911) A.A. Dallman, are still there today.

Is there anything to be made of this?

1. Of Dallman's records, very few native plants have been lost, or rather, not recorded since 1995.
2. Of his records, about 20% of the archaeophytes have not been recorded since 1995.
3. 52% of his native plant records have a rarity status.
4. 40% of his archaeophyte records have a rarity status.

I suppose recording in Denbighshire needs to continue to monitor the probable decline and loss of these plants, but I shall continue to peruse Dallman's work, of which this is but a short review and much of interest has been omitted.

## References

Dallman, A.A. (1911). Notes on the Flora of Denbighshire. *J. Bot. Lond.* 49 (Supplement) 1–50.

Dallman, A.A. (1913). Further Notes on the Flora of Denbighshire. *J. Bot. Lond.* 51. (Supplement 11) 1–43.

Green, Jean A. (2006). *The Flowering Plants and Ferns of Denbighshire, A botanical check-list for vice-county 50*. Countryside Council for Wales, Bangor.

McCarthy, W. and Stead, M.O. (2015). BSBI Distribution Database



# Welsh Plant Records 2023

Welsh Plant Records are compiled by Stephen Coker, Mountain Grove, Clarboston Road, Haverfordwest, Pembs, SA63 4SG, from reports of BSBI vice-county Recorders to whom records should be sent. Plants are listed for each vice-county in the order of D.H. Kent's *List of Vascular Plants of the British Isles* (1992) and *Supplements 1, 2 & 3* (1996 & 2000) the number in those lists preceding the name so that names changed since 1996 can be given without giving the former name. Latin names follow the 3<sup>rd</sup> edition of C.A. Stace's *New Flora of the British Isles* (2010) or, if not in that Flora, E.J. Clement & M.C. Foster's *Alien Plants of the British Isles* (1994). T.B. Ryves, E.J. Clement & M.C. Foster's *Alien Grasses of the British Isles* (1996) or Sell & Murrell's *Flora of Great Britain and Ireland* (1996-2009). Authorities for Latin names are not given unless the name is not in any of these works. English names are those in Stace (2010) or *English Names of Wild Flowers* ed. 2 (1986) by Dony *et al*, or, if not in either of those, Clement & Foster (1994), Ryves, Clement & Foster (1996) or Sell & Murrell (1996-2009). English names enclosed by square brackets do not occur in any of these books but have been used elsewhere. Welsh names are those in *Planhigion Blodeuol, Conwydd a Rhedyn*, published by Cymdeithas Edward Llwyd (2003).

The following symbols are used:

\* to indicate a new v.c. record;  $\ddot{A}$  to indicate an updated VCCC record;  $\hat{A}$  to indicate a record demonstrating the rediscovery of a taxon published as extinct in the VCCC

+ to indicate a new hectad record;  $\hat{A}$  to indicate an updated hectad record;  $\gamma$  to indicate a new tetrad record

† indicates archaeophyte; ‡ indicates neophyte; © indicates casual.

†‡© before the species number: to indicate that the species is regarded as an archaeophyte, neophyte or casual at least somewhere in the British Isles.

†‡© after the species number: to indicate that the species is regarded as an archaeophyte, neophyte or casual generally within the vice county, different from that of the British Isles.

†‡© before the record: to indicate a species which although a native, archaeophyte or neophyte at least somewhere in the vice county, is not so in the locality recorded.

[ ] to indicate that the record, previously published in error, should be deleted.

⌘ to indicate an update to a rare or scarce taxon.

∅ to indicate that the taxon is now believed to be extinct in the locality cited.

N, S, E, W indicate points of the compass.

In general, only records which update the *Vice-county Census Catalogue* [VCCC] (2003) or the *New Atlas of the British & Irish Flora* (2002) will be listed. Other records are included at the discretion of the vice-county recorder. The minimum grid reference is to a hectad but, if supplied by the recorder, more precise grid references may be included. A letter in parentheses following a grid reference indicates a tetrad.

The Vice-county Recorders from 2023 are:

MONMOUTH, v.c.35; Dr Stephanie J. Tyler, Yew Tree Cottage, Lone Lane, Penallt, Mons, NP25 4AJ; [steph\\_tyler2001@hotmail.com](mailto:steph_tyler2001@hotmail.com) & Mrs Elsa. Wood (*all correspondence to Dr Tyler*).

GLAMORGAN, v.c.41 (West); Mr Barry Stewart, 36 Pencaecrwn Road, Gorsenion, Swansea, SA4 4FU; [moonmoths@virginmedia.com](mailto:moonmoths@virginmedia.com)

GLAMORGAN, v.c.41 (East); Mr Julian P. Woodman, 25 Heol y Pentre, Pentyrch, Cardiff, CF15 9QD; [juwood66@gmail.com](mailto:juwood66@gmail.com), David Barden & Karen Wilkinson

BRECON, v.c.42; Mr Mike Porter, Aberhoywy Farm, Cyffredyn Lane, Llangynidr, near Crickhowell, Powys NP8 1LR; [mikechris1@btinternet.com](mailto:mikechris1@btinternet.com) & Dr J.R. Crellin; [jrc@crellin.org.uk](mailto:jrc@crellin.org.uk) (all correspondence to John Crellin).

RADNOR, v.c.43; Miss Elizabeth R. Dean, Enmore House, Croft Lane, Kingsland, Leominster, Herefordshire, HR6 9PP; [erd@btconnect.com](mailto:erd@btconnect.com)

CARMARTHEN, v.c.44; Mr Richard D. Pryce & Mrs Kath A. Pryce, Trevetin, School Road, Pwll, Llanelli, Carmarthenshire SA15 4AL; [pryceeco@aol.com](mailto:pryceeco@aol.com)

PEMBROKE, v.c.45; Mr Stephen B. Evans, Glan-y-Mor, Dinas Cross, Newport, Pembrokeshire SA42 0UQ; [glanymor.dinas@gmail.com](mailto:glanymor.dinas@gmail.com)

CARDIGAN, v.c.46; Mr Steve Chambers, 7 Cefn Melindwr, Capel Bangor, Aberystwyth, Ceredigion SY23 3LS; [sterilecrust@gmail.com](mailto:sterilecrust@gmail.com)

MONTGOMERY, v.c.47; Dr A Kate Thorne, Churton House, Church Pulverbatch, Shropshire, SY5 8BZ; [k.thorne@btinternet.com](mailto:k.thorne@btinternet.com) & Mrs Gill Foulkes

MERIONETH, v.c.48; Jo Clark, 6 Ffordd Tanrhiw, Tregarth, Bangor, Gwynedd, LL57 4AH; [j.clark315@btinternet.com](mailto:j.clark315@btinternet.com). & Heather Garrett, Ael y Bryn, Ffordd Bryn Hyfryd, Tywyn, Gwynedd, [heather@sundaydance.co.uk](mailto:heather@sundaydance.co.uk).

CAERNARFON, v.c.49; Mrs Wendy N. McCarthy, 5 Tyn-y-coed, Great Orme, Llandudno, Conwy LL30 2QA. [wendorme@aol.com](mailto:wendorme@aol.com)

DENBIGH, v.c.50; Mrs Delyth Williams, Bryn Siriol, Graigfechan, Ruthin, Denbighshire, LL15 2HA; [delyth@siriolbryn.co.uk](mailto:delyth@siriolbryn.co.uk)

FLINT, v.c.51; Ms Gail Quartly-Bishop, 32 Delamere Street, Warrington, WA5 1PD; [gailqb@hotmail.com](mailto:gailqb@hotmail.com) & Ms Emily Meilleur

ANGLESEY, v.c.52; Mr Ian R. Bonner, 15 Littledean Hill Road, Cinderford, Gloucestershire, GL14 2BD; [bonner@caetrefor.co.uk](mailto:bonner@caetrefor.co.uk) and Mr Nigel Brown, Granary Cottage, Llanddyfnan, Talwrn, Llangefni, Anglesey, LL77 8JA; [nigelhbrown55@yahoo.com](mailto:nigelhbrown55@yahoo.com)

MONMOUTH, v.c.35 (comm. S.J. Tyler & E. Wood)

+c1-4-fle *Nitella flexilis* (Smooth Stonewort). Shallow pond on coal spoil, Mynydd Varteg, SO24 06, E. Wood & A. Wood, S. Tyler, 3rd Aug 2002.

+011/1. *Polypodium cambricum* (Southern Polypody) (Llawredynen Gymreig). Walls of church, Christchurch, ST34 89, E. Wood, A. Wood & S. Tyler, 25th Feb 2022.

+I017/2.1. *Cyrtomium falcatum* (House Holly-fern) (Gwrychredynen-y-Celyn y Tŷ). Hedgerow, Caerleon, ST24 90, E. Wood & S. Tyler, 9th Feb 2022; (+) edge of woodland, Cuhere Wood, ST45 92, L. McLean, 25th Feb 2022.

- +†043/1.05. *Chenopodium glaucum* (Oak-leaved Goosefoot) (Troed-yr-wydd Dail Derw). Beet field, Cross Ash, SO40 19, S. Tyler & E. Wood, 17th Aug 2022.
- +†044/1.2. © *Amaranthus hybridus* (Green Amaranth) (Blodyn Amor Gwyrdd). Allotments, Cwmbran, ST29 94, S. Tyler & E. Wood, 10th Nov 2022.
- +†047/4.6. *Polygonum rurivagum* (Cornfield Knotgrass) (Canclwm y Tir Âr). Arable field, Caldicot moor, ST44 87, S. Tyler & E. Wood, 3rd Oct 2022; (+) arable field, Nr Woolpitch Wood, SO48 04, E. Wood & S. Tyler, 30th Aug 2022.
- 051/1.16. *Hypericum elodes* (Marsh St John's-wort) (Eurinllys y Gors). Edge of pond, Newbridge, ST205 976, E. Wood & A. Wood, 8th Sep 2022, first recent record in this hectad of this species that is declining in the county.
- +057/1.01.c *Viola odorata* var. *subcarnea*. Naturalised in churchyard, Llantrisant, ST39 96, S. Tyler & E. Wood, 10th Mar 2022.
- Ä ©062/30.4. *Lepidium virginicum* (Least Pepperwort) (Pupurlys Bach). Cemetery, Newport, ST33 88, S. Tyler & E. Wood, 2nd Nov 2022.
- +†062/33.2. *Diplotaxis muralis* (Annual Wall-rocket) (Roced-y-muriau'r Tywod). Wainfelin, SO27 00, S. Tyler & E. Wood, 22nd Jun 2022.
- +†063/1.2. *Reseda alba* (White Mignonette) (Melengu Wen). On a mound of disturbed soil, Redwick, ST41 84, S. Tyler & E. Wood, 3rd Oct 2022; (+) edge of maize field, Llancayo, SO36 03, S. Tyler & E. Wood, 21st Sep 2022.
- +†069/6.2.a.lil *Anagallis arvensis* subsp. *arvensis* f. *lilacina* (Scarlet Pimpernel lilac form)(Llysiâu'r cryman). Beet field, Cross Ash, SO40 18, S. Tyler & E. Wood, 17th Aug 2022.
- \*075/19.10.a. *Alchemilla filicaulis* subsp. *filicaulis* (Mantell-Fair Goesfain). Edge of limestone chipping track in openwoodland, Chepstow, ST512 942, Monmouthshire Botany Group, det. E. Wood, 23rd Apr 2022, first county record for this subsp.
- +084/1.02×08 *Epilobium ×floridulum*. Llanvapley, SO37 14, E. Wood & S. Tyler, 14th Jun 2022.
- +091/2.07. *Euphorbia stricta* (Upright Spurge) (Llaethlys Syth). Bank by football field, Wainfelin, SO27 00, S. Tyler & E. Wood, 22nd Jun 2022.
- +†102/1.10. *Oxalis debilis* (Large-flowered Pink-sorrel) (Suran Oddfog). Allotments, Usk, SO38 01, E. Wood & S. Tyler, 26th Oct 2022.
- +†103/2.2. *Erodium moschatum* (Musk Stork's-bill) (Pig-y-crêyr Fwsg). Tredeger Park Newport, ST292 859, Monmouthshire Botany Group, 10th Sep 2022, recreation ground car park.
- Ä 105/1.1. † *Impatiens noli-tangere* (Touch-me-not Balsam) (Ffromlys Melyn). Last recorded here in 1888, Wyndcliffe, ST52 96, C. Titcombe & C. Hatch, Aug 2022, on the track down to the Otter Hole entrance close to the salt marsh.
- +107/19.1. *Oenanthe fistulosa* (Tubular Water-dropwort) (Cegiden Bibellaidd). Edge of overgrown stream, Llantilio Crossenny, SO38 14, E. Wood, A. Wood & S. Tyler, 12th Jun 2022.
- +107/19.3. *Oenanthe pimpinelloides* (Corky-fruited Water-dropwort) (Cegiden Mynwy). In paddock of Whitebrook House, Wentwood, ST421 924, S. Tyler & E. Wood, 25th

- Jun 2022; (+) garden meadow at Old House, Penallt, SO508 079, S. Tyler, 24th Jun 2022.
- +‡110/1.1. © *Nicandra physalodes* (Apple-of-Peru) (Afal Periw). Allotments, Caerleon, ST33 90, E. Wood & S. Tyler, 26th Oct 2022.
- +©110/NIC.tab. *Nicotiana tabacum* (Tobacco) (Baco). Allotments, Newport, ST30 96, S. Tyler & E. Wood, 10th Nov 2022.
- +‡118/23.1×2×3. *Mentha ×smithiana* (Tall Mint) (Mintys Coch). By cycle track near cemetery, Mynydd Varteg, SO25 07, E. Wood, A. Wood & S. Tyler, 3rd Aug 2022.
- \*‡124/02.5. *Scrophularia vernalis* (Yellow Figwort) (Gwrnerth Melyn). Abersychan, SO270 032, R. Hewitt, May 2022.
- +‡124/09.1. *Misopates orontium* (Weasel's-snout) (Y Trwyn-y-llo Lleiaf). Chepstow Allotments, Bulwark, ST53 92, E. Wood & S. Tyler, 12th Oct 2022, first record in county since 1988.
- +124/20.01.b. *Euphrasia rostkoviana* subsp. *montana*. Meadow at White Horse farm on the 200m contour, Edge of Wentwood, ST418 971, E. Wood & S. Tyler, 30th Aug 2022, second recent record.
- +124/20.05. *Euphrasia arctica* (Arctic Eyebright) (Effros yr Arctig). Edges of open track in Wentwood forest, Pen-y-cae-mawr, ST41 94, E. Wood & A. Wood, 29th Sep 2022.
- +124/20.05×09. *Euphrasia arctica* × *E. confusa*. Old coal spoil, Blaenavon nr, Garn Lakes, SO23 10, E. Wood & S. Tyler, 13th Aug 2022.
- +124/20.07×09. *Euphrasia nemorosa* × *E. confusa*. Old coal spoil, The British, SO25 03, E. Wood, A. Wood & S. Tyler, det. E. Wood, 20th Jun 2022.
- +124/20.18. *Euphrasia micrantha* (Purple-stemmed Eyebright) (Effros Mân-flodeuog). Old coal spoil, Garndiffaith, SO25 04, E. Wood, A. Wood & S. Tyler, 20th Jun 2022.
- +131/2.2. *Viburnum lantana* (Wayfaring-tree) (Gwifwrnwydden). Hedge, Hendre, SO440 162, W. Tyler-batt, 16th Apr 2022.
- +142/1.13. *Potamogeton pusillus* (Lesser Pondweed) (Dyfrllys Eiddil). Garn Lakes, SO23 10, Monmouthshire Botany Group, det. E. Wood, 12th Aug 2022; (+) pond at the Old Vicarage, Pen yr rhoel, SO42 11, E. Wood & S. Tyler, 11th Jun 2022.
- \*148/1.ol *Spirodela oligorhiza*. Water tub in St Julian's allotments, Newport, ST318 897, E. Wood & S. Tyler, 10th Nov 2022, second Welsh record.
- +148/2.val. *Lemna valdiviana*. Pond in allotments, Caerleon, ST33 90, E. Wood & S. Tyler, 26th Oct 2022.
- \*148/3.2. *Wolffia columbiana* (Columbian water-meal). Gwent levels, ST38, R. Lansdown, 2022, according to R. Lansdown *Wolffia arriza* does not occur on the Levels - it is all *columbiana*.
- +151/1.13×14. *Juncus ×surrejanus*. Wet hollow on old coal spoil, Garndiffaith, SO25 04, E. Wood, A. Wood & S. Tyler, 20th Jun 2022.
- +‡152/11.2. *Cyperus eragrostis* (Pale Galingale) (Ysnoden-Fair Welw). Edge of allotments, Rogiet, ST46 89, S. Tyler & E. Wood, 3rd Oct 2022.
- +153/46.1. ‡ *Polypogon monspeliensis* (Annual Beard-grass) (Barfwellt Unflwydd). Wainfelin, SO27 00, E. Wood & S. Tyler, 22nd Jun 2022.
- \*153/47.1×2. *Alopecurus ×brachystylus*. Growing by a patch of *A. geniculatus*, Monmouth Cap, SO395 264, S. Tyler, 5th Jun 2022, first record for the county.



- +‡153/50.7. *Bromus secalinus* (Rye Brome) (Pawrwellt Bach). Arable field, Ilandevenny, ST40 87, S. Tyler & E. Wood, 3rd Oct 2022; (+) arable field, Caldicot Moor, ST40 87, S. Tyler, 7th Jun 2022.
- +‡153/53.3. © *Ceratochloa cathartica* (Rescue Brome) (Pawrwellt Porthi). Alongside the stream, Bishton, ST394 878, E. Wood & S. Tyler, 23rd Jun 2022.
- +153/54.1. *Brachypodium pinnatum* (Heath False-brome) (Breichwellt y Calch). Roadside verge, Bishton, ST394 879, E. Wood & S. Tyler, 23rd Jun 2022.
- \*‡153/71.1. © *Digitaria ischaemum* (Smooth Finger-grass) (Byswellt Llyfn). In pavements in the town, Abergavenny, SO296 142, E. Wood & S. Tyler, 10th Aug 2022, second County record - 1st was in 1908 from Newport Docks.
- +©153/PAN.cap. *Panicum capillare* (Witch-grass) (Miled y Wrach). Edge of cemetery, Abergavenny, SO28 13, E. Wood & S. Tyler, 19th Oct 2022.
- 158/24.11. *Allium oleraceum* (Field Garlic) (Garlleg y Maes). Hedgerow in Minnetts lane, Rogiet, ST458 882, E. Wood & A. Wood, 6th Jul 2022, not the first record for the hectad but a new site and the other sites no longer have this species that is declining in the county.
- +‡159/08.1. *Crocus vernus* (Spring Crocus) (Saffrwm y Gwanwyn). Naturalised in grass verge, Newbridge, ST38 95, S. Tyler & E. Wood, 10th Mar 2022.
- Â 162/03.6. *Epipactis leptochila* (Narrow-lipped Helleborine) (Y Galdrist Finfain). Beech woodland at the Court, Wyndcliffe Court, ST518 973, C. Evans & D. Evans, det. A. Richards, 28th Jun 2022, declared extinct in the county in 2007.
- +162/18.2×4. *Dactylorhiza ×hallii*. Chepstow Park wood, ST48 97, Monmouthshire Botany Group, det. S. Tyler, 4th Jun 2022; (+) fields at the 'Spout', Earlswood, ST49 95, E. Wood & S. Tyler, 18th Jun 2022.
- +‡101A/CHO.ter. *Choisya ternata* (Mexican Orange) (Llwyn Oren Mecsico). Hedge, Caerleon, ST24 90, E. Wood & S. Tyler, 9th Feb 2022

#### GLAMORGAN, v.c.41 (comm. J.P. Woodman & B. Stewart)

- ⊞+c1-1-glo *Chara globularis* (Fragile Stonewort). Dyffryn Gardens, ST094 723, Barry Stewart, 16th Oct 2022.
- ⊞+017/1.1×2. *Polystichum ×bicknellii*. Wooded roadside, Tor-y-Coed, Rhiwsaeson, ST061 829, David Barden, 7th Nov 2021, 1 plant with 2 plants of *P. aculeatum* and frequent *P. setiferum*.
- ⊞+043/3.02×04. *Atriplex ×gustafssoniana* (Kattegat Orache) (Llygwyn Kattegat). Llanrhidian, SS5028 9325, J.M. Parmenter, 5th Sep 2022.
- ⊞+‡046/01.1.llo. *Arenaria serpyllifolia* subsp. *lloydii* ([Dune Sandwort]). Baglan, SS728 917, Glamorgan Botany Group, 18th Jun 2022.
- ⊞+047/8.18.‡ *Rumex pulcher* (Fiddle Dock) (Tafolen Ganolfain). Barry Docks, ST124 676, Sharon Pilkington, 7th Jul 2022.
- Ä 057/1.01. *Viola ×scabra* (Sweet Violet). Bank on NW side of track, Coed y Stanby, Graig Penllyn, SS9836 7732, David Barden, 21st Mar 2021, first record in VC since 1907, a large patch in full flower.

- \*057/1.12×13. *Viola* ×*contempta*. Dune, Whiteford NNR, SS4455 9544, J.M. Parmenter, 6th Sep 2022, *Viola tricolor* x *V. arvensis*.
- ♣+059/1.1. † *Frankenia laevis* (Sea-heath) (*Grugeilun Llyfn*). Swansea Bay, SS967 926, Barry Stewart, 31st Aug 2022.
- ♣+061/2.11×16. *Salix* ×*subsericea*. Oxwich Burrows, SS508 874, Barry Stewart, 21st Jul 2022.
- \* †062/14.4. *Cardamine raphanifolia* (Greater Cuckooflower) (*Blodyn Llefrith Mawr*). Wind Street, Swansea, SS657 929, Barry Stewart, 18th Oct 2022, from Wind Street/Princess Way/Green Dragon Lane pavement flora.
- ♣+118/23.5. *Mentha pulegium* (Pennyroyal) (*Brymlys*). Pentre, SS975 960, Paul Denning, 18th Oct 2022, presumed var. *erecta*, non-native taxon.
- +135/25.01.14. *Taraxacum inopinatum* (Unexpected Dandelion). Crymlyn Burrows, SS72 93, Charles Hipkin, 3rd Apr 2022.
- ♣+135/28.07.661. *Hieracium lepiduloides* (Irregular-toothed Hawkweed). Baglan, SS740 921, Glamorgan Botany Group, det. Tim Rich, 18th Jun 2022.
- ♣+ †135/28.07.67. *Hieracium subamplifolium* (Balloon-leaved Hawkweed). Baglan, SS740 921, Glamorgan Botany Group, det. Tim Rich, 18th Jun 2022.
- +162/18.2×4. *Dactylorhiza* ×*hallii*. Llantrisant Common, ST0480 8457, David Barden, 25th Jun 2021, update of 1938 record for this hectad

BRECON, v.c.42 (comm. M. Porter & J. Crellin)

- 017/1.1. *Polystichum setiferum* (Soft Shield-fern) (*Gwrychredynen Feddal*). Tir Canol, SN76 11, John Crellin, Sue Goodhead, Joan Millard & Arlene Jones, det. John Crellin, 30th Mar 2022.
- +017/2.for.1 *Cyrtomium fortunei* subsp. *clivicola*. Forest track drainage bund, SN76 11, John Crellin, Sue Goodhead, Joan Millard & Arlene Jones, det. Fred Rumsey, 30th Mar 2022.
- + †020/1.1. © *Abies alba* (European Silver-fir) (*Ffynidwydden Arian*). Llangammarch Wells, SN93 47, John Crellin, Sue Goodhead, Joan Millard, Alan Salter & Tess Lister, det. John Crellin, 16th Mar 2022.
- + †020/1.3. © *Abies procera* (Noble Fir) (*Ffynidwydden Urddasol*). Wern Frank Wood, SO19 33, John Crellin, 12th Jan 2022.
- \* †020/1.nor. *Abies nordmanniana* (Caucasian Fir) (*Ffynidwydden y Cawcasws*). Gopwllau, SO25 19, John Crellin, Steph Coates & Joan Millard, 13th May 2022.
- \* ©020/4.eng. *Picea engelmannii* (Engelmann Spruce) (*Sbriwsen Engelmann*). Llangammarch Wells, SN93 47, John Crellin, Sue Goodhead, Joan Millard, Alan Salter & Tess Lister, det. John Crellin, 16th Mar 2022.
- + †020/6.lib. *Cedrus libani* (Cedar-of-Lebanon) (*Cedrwydden Libanus*). Gliffaes Hotel grounds, SO16 19, John Crellin, 6th Apr 2022.
- + †020/7.2. *Pinus nigra*. Caeronen Orchard, SO17 37, John Crellin, Sue Goodhead, Joan Millard, Tess Lister, Linda Wyndham & Joanne Wilson, det. John Crellin, 18th May 2022, surrounding orchard.

- +028/03.1. *Helleborus foetidus* (Stinking Hellebore) (Crafanc-yr-arth Ddrewllyd). Quarry - Halfway Forest, SN84 34, John Crellin & Sue Goodhead, det. John Crellin, 15th Jun 2022.
- +028/16.1. *Aquilegia vulgaris* (Columbine) (Troed y Golomen). Diamond Park, SN78 09, Arlene Jones, 11th Jul 2022, one only.
- 030/2.1. *Papaver cambricum* (Welsh Poppy) (Pabi Cymreig). Diamond Park, SN78 09, Arlene Jones, 11th Jul 2022.
- Ä 033/1.1×3.‡ *Ulmus* × *vegeta* (Huntingdon Elm) (Llwyfen Huntingdon). Pen-y-rhiw, SN99 58, John Crellin, det. Max Coleman, conf. M Coleman 10/2/2023, 6th Jul 2022.
- +‡035/2.1. *Ficus carica* (Fig) (Ffigysbren). Llysven, SO12 38, Ray Woods, John Crellin & Liz Dean, 2nd Jul 2022.
- +‡037/1.1. *Juglans regia* (Walnut) (Coeden Cnau Ffrengig). Near Talsarn, SO16 23, Anne Griffiths & Joan Millard, 22nd Nov 2022; (+) Aberllynfi, SO17 37, John Crellin, Sue Goodhead, Joan Millard, Tess Lister, Linda Wyndham & Joanne Wilson, det. John Crellin, 18th May 2022, in orchard.
- +‡039/4.7. © *Quercus rubra* (Red Oak) (Derwen Goch). Talybont Reservoir North, SO10 19, Anne Griffiths & Joan Millard, 20th Dec 2022.
- +040/3.1.‡ *Carpinus betulus* (Hornbeam) (Oestrwydden). Talybont Reservoir North, SO09 19, Anne Griffiths, 28th Apr 2022.
- ±+046/11.2 *Scleranthus annuus* (Annual Knawel) (Dinodd Unflwydd). Near gate, Nantsebon, SN90 33, John Crellin & Moyrah Gall, det. John Crellin, 28th Jun 2022; (±+) Pen y Rhiw, SN99 58, John Crellin, Joan Millard, Anne Griffiths, Andy Shaw & Joanne Wilson, det. John Crellin, 1st Jun 2022, abundant on ridge and tracks near farm.
- 047/1.06. *Persicaria bistorta* (Common Bistort) (Llysiâu'r Leidr). Llanwyrtyd Wells West, SN87 46, Anne Griffiths, 31st May 2022; Blackrock, SO21 12, John Crellin & Anne Griffiths, 17th Jun 2022.
- †047/4.3. *Polygonum arenastrum* (Equal-leaved Knotgrass) (Y Canclwm Manddail). Diamond Park, SN78 09, Arlene Jones, 11th Jul 2022, verges of walkways.
- 051/1.06×07. *Hypericum* × *desetangsii* (*H. perforatum* × *H. maculatum*) (Des Etangs' St John's-wort) (Eurinllys Des Etangs). Diamond Park, SN78 09, Arlene Jones, 11th Jul 2022.
- +052/1.2. *Tilia cordata* (Small-leaved Lime) (Pisgwydden Dail Bach). Ffrwdgrech Road, SO03 27, John Crellin, Anne Griffiths, Joan Millard & Sue Goodhead, 12th Oct 2022.
- +†061/2.03. *Salix alba* (White Willow) (Helygen Wen). Llangoed farm, SO11 40, Ray Woods, John Crellin & Liz Dean, 2nd Jul 2022.
- +062/11.1. *Barbarea vulgaris* (Winter-cress) (Berwr-y-gaeaf). Allt Troedrhiw-fer, SN84 33, John Crellin & Sue Goodhead, det. John Crellin, 15th Jun 2022.
- +062/14.qu *Cardamine quinquefolia* (Whorled Coralroot). Gliffaes Hotel grounds, SO17 19, John Crellin, 6th Apr 2022.
- +‡062/16.1. *Aubrieta deltoidea* (Aubretia) (Cynfas Biws). Cwmdu, SO17 23, Anne Griffiths, Joan Millard & Sue Goodhead, 23rd Feb 2022.

- \*©062/42.sat. *Raphanus sativus* (Garden Radish) (Rhuddygl y Gerddi). Wye South of Llangoed, SO12 39, Ray Woods, John Crellin & Liz Dean, 2nd Jul 2022.
- ±†063/1.1. *Reseda luteola* (Weld) (Melengu). Quarry - Halfway Forest, SN84 33, John Crellin & Sue Goodhead, det. John Crellin, 15th Jun 2022; (±+) Cwm Clydach, SO19 12, John Crellin & Anne Griffiths, 17th Jun 2022, common down the gorge.
- +064/1.1. *Empetrum nigrum* (Creiglusen). Llangoed Common, SO09 38, John Crellin, Steph Coates, Anne Griffiths, Sue Goodhead, Arlene Jones & Joanne Wilson, det. John Crellin, 13th Jul 2022.
- +†075/08.0.02. *Rubus tricolor* (Chinese Bramble) (Llwyn Mwyar Trilliw). Grassland opposite Allt Rhongyr, SN85 15, Beverley Lewis, det. John Crellin, 5th Nov 2022.
- +†075/17.3. *Poterium sanguisorba* (Bwrned). Tir Canol, SN76 11, John Crellin, Sue Goodhead, Joan Millard & Arlene Jones, det. John Crellin, 30th Mar 2022.
- +†075/17.3.b. *Poterium sanguisorba* subsp. *balearicum* (Fodder Burnet) (Bwrned Ebran). Below Sports Ground, SO19 12, John Crellin, Anne Griffiths, Joan Millard & Sue Goodhead, det. Anne Griffiths, 14th Sep 2022, redetermined by Anne Griffiths as subsp. *balearicum* 19/9/22.
- +†075/19.15. *Alchemilla mollis* (Garden Lady's-mantle) (Mantell-Fair y Gerddi). Diamond Park, SN78 09, Arlene Jones, 11th Jul 2022, verges, meadow,.
- +077/14.06. *Vicia hirsuta* (Hairy Tare) (Ffacbysen Flewog). Llanwyrtyd Wells West, SN87 46, Anne Griffiths, 31st May 2022.
- +†077/17.3. *Melilotus officinalis* (Ribbed Melilot) (Yr Wydro Resog). Blackrock, SO21 12, John Crellin & Anne Griffiths, 17th Jun 2022.
- +077/18.1. *Medicago lupulina* (Black Medick) (Maglys Du). Llanwyrtyd Wells West, SN87 46, Anne Griffiths, 31st May 2022.
- +077/19.13. *Trifolium micranthum* (Slender Trefoil) (Meillionen Hopysaidd Eiddil). Pen-y-rhiw, SN99 58, John Crellin, Joan Millard, Anne Griffiths, Andy Shaw & Joanne Wilson, det. John Crellin, 1st Jun 2022; Llangoed Common W, SO08 38, John Crellin, Steph Coates, Anne Griffiths, Sue Goodhead, Arlene Jones & Joanne Wilson, det. John Crellin, 13th Jul 2022.
- 099/1.3. *Acer campestre* (Field Maple) (Masarnen Fach). Tir Canol, SN76 11, John Crellin, Sue Goodhead, Joan Millard & Arlene Jones, det. John Crellin, 30th Mar 2022.
- 103/1.18. *Geranium lucidum* (Shining Crane's-bill) (Pig-yr-aran Loywddail). Llangammarch Wells, SN93 47, John Crellin, Sue Goodhead, Joan Millard, Alan Salter & Tess Lister, det. John Crellin, 16th Mar 2022.
- +108/3.2. *Centaurium erythraea* (Common Centaury) (Y Ganrhi Goch). Pen-yr-heol, SN99 11, Anne Griffiths & Joan Millard, 26th Jul 2022.
- +†109/1.3. *Vinca major* (Greater Periwinkle) (Perfagl Fawr). Penheolmeirch, SO23 22, Anne Griffiths & Joan Millard, 1st Feb 2022.
- 110/8.1. *Solanum nigrum* (Black Nightshade) (Codwarth Du). Road verge, SO19 12, John Crellin, Anne Griffiths, Joan Millard & Sue Goodhead, det. John Crellin, 14th Sep 2022.
- +†115/1.1. © *Phacelia tanacetifolia* (Phacelia) (Ffaselia). Crickhowell, SO21 18, John Crellin, Anne Griffiths & Sue Goodhead, 30th Nov 2022, grown as a crop in an allotment and clearly escaped to rough grass on the verge.



- +116/02.1. *Echium vulgare* (Viper's-bugloss) (Gwiberlys). Below Sports Ground, SO19 12, John Crellin, Anne Griffiths, Joan Millard & Sue Goodhead, det. John Crellin, 14th Sep 2022; (+) Coed Ffyddlwn, SO22 12, Anne Griffiths & Joan Millard, 28th Jun 2022.
- +‡116/03.1. *Pulmonaria officinalis* (Lungwort) (Llysiau'r Ysgyfaint). Llangammarch Wells, SN93 47, John Crellin, Sue Goodhead, Joan Millard, Alan Salter & Tess Lister, det. John Crellin, 16th Mar 2022.
- \*‡116/04.6. *Symphytum orientale* (White Comfrey) (Cyfardwf Wen). Llangattock, SO21 17, Ray Woods, det. John Crellin, 12th Apr 2022.
- +118/10.2. *Scutellaria galericulata* (Skullcap) (Cycyllog). Ystrad Fawr Nature Reserve, SN79 10, Steph Coates, 14th Jun 2022.
- +118/20.1. *Origanum vulgare* (Wild Marjoram) (Penrhudd). Pen yr Heol, SO24 20, Anne Griffiths & Joan Millard, 6th Dec 2022.
- +‡122/1.2. *Buddleja davidii* (Butterfly-bush) (Y Gynffon Las). Clydach, SO19 12, John Crellin, Anne Griffiths, Joan Millard & Sue Goodhead, det. John Crellin, 14th Sep 2022.
- +124/02.2. *Scrophularia auriculata* (Water Figwort) (Gwrnerth y Dŵr). Allt Troedrhwi-fer, SN84 33, John Crellin & Sue Goodhead, det. John Crellin, 15th Jun 2022; (+) Pen-yr-heol, SN99 11, Anne Griffiths & Joan Millard, 26th Jul 2022.
- +124/11.1. *Cymbalaria muralis* (Ivy-leaved Toadflax) (Trwyn-y-llo Dail Eiddew). Allt Troedrhwi-fer, SN84 33, John Crellin & Sue Goodhead, det. John Crellin, 15th Jun 2022.
- +‡124/16.23. *Veronica filiformis* (Slender Speedwell) (Rhwyddlwyn Main). Near River Irfon, Llangammarch Wells, SN93 47, John Crellin, 15th Apr 2022.
- +‡124/16.24. *Veronica hederifolia* (Ivy-leaved Speedwell) (Rhwyddlwyn Dail Eiddew). Llangammarch Wells, SN93 47, John Crellin, Sue Goodhead, Joan Millard, Alan Salter & Tess Lister, det. John Crellin, 16th Mar 2022.
- +130/6.03. *Galium uliginosum* (Fen Bedstraw) (Briwydd y Fign). Carreg Wen Fawr, SN82 62, John Crellin, Steph Coates & Sue Goodhead, det. John Crellin, 27th Jul 2022.
- +134/1.1. *Dipsacus fullonum* (Wild Teasel) (Cribau'r-pannwr Gwyllt). Troed y Rhiw Lliidiart, SN93 46, Anne Griffiths, 1st Aug 2022; (+) Wern Coed, SN99 57, John Crellin, Joan Millard, Anne Griffiths, Andy Shaw & Joanne Wilson, det. John Crellin, 1st Jun 2022.
- +135/01.1.sl. *Arctium lappa*. Cwm Clydach, SO20 12, John Crellin, Anne Griffiths, Joan Millard & Sue Goodhead, det. John Crellin, 14th Sep 2022.
- +135/06.3. *Cirsium dissectum* (Meadow Thistle) (Ysgallen y Ddôl). Near Llangorse lake, SO12 26, Matt Sutton, 8th Jul 2022, c.30 plants in M24.
- +‡135/12.1. *Cichorium intybus* (Chicory) (Ysgello). Below Sports Ground, SO19 12, John Crellin, Anne Griffiths, Joan Millard & Sue Goodhead, det. John Crellin, 14th Sep 2022.
- 135/21.2. *Sonchus arvensis* (Perennial Sow-thistle) (Llaethysgallen y Tir Âr). Allt Troedrhwi-fer, SN84 33, John Crellin & Sue Goodhead, det. John Crellin, 15th Jun 2022.

- +135/26.1. *Crepis paludosa* (Marsh Hawk's-beard) (Gwalchlys y gors). Lanwrtyd Wells bridge, SN87 46, Tim Rich & Andy Shaw, det. Rich, TCG, 20th Jun 2022.
- 135/28.04.24. *Hieracium scabrisetum* (Scabrous Hawkweed). Nant Henog, SN84 48, Tim Rich & Andy Shaw, det. Rich, TCG, 20th Jun 2022.
- †135/28.07.dae. *Hieracium daedalolepioides* (Petite-leaved Hawkweed). Nant Henog, SN85 48, Tim Rich & Andy Shaw, det. Rich, TCG, 20th Jun 2022, by old 2 plant bridge, 3 flowering more vegetative.
- 135/37.1. *Pulicaria dysenterica* (Common Fleabane) (Cedowydd). Penmoelallt, SO00 09, Anne Griffiths & Joan Millard, 9th Aug 2022.
- 135/40.1. *Solidago virgaurea* (Goldenrod) (Eurwialen). Coedcae-Prince, SN79 09, Arlene Jones, 30th Jul 2022, woodland pathside,.
- ‡135/71.4. *Petasites fragrans* (Winter Heliotrope) (Alan Pêr). Gilwern Hill NW, SO23 13, Anne Griffiths, 20th Oct 2022.
- ±137/1.1. *Sagittaria sagittifolia* (Arrowhead) (Saethlys). Canal, Llangynidr, SO15 20, G S Motley, 19th Jul 2022.
- +‡147/5.2. *Arum italicum* (Italian Lords-and-Ladies) (Pidyn-y-gog Eidalaid). Gwndwn, SO16 23, Anne Griffiths & Joan Millard, 22nd Nov 2022; (+) Pen yr Heol, SO24 20, Anne Griffiths & Joan Millard, 6th Dec 2022.
- +148/2.3. *Lemna trisulca* (Ivy-leaved Duckweed) (Llinad Dail Eiddew). Artificial pond / drainage scheme, SN76 11, John Crellin, Sue Goodhead, Joan Millard & Arlene Jones, det. John Crellin, 30th Mar 2022.
- ±152/01.2. *Eriophorum latifolium* (Broad-leaved Cottongrass) (Plu'r Gweunydd Llydanddail). Nantsebon, SN90 33, John Crellin, 28th Jun 2022.
- +152/16.31 *Carex pendula* (Pendulous Sedge) (Hesgen Bendrom). Llangammarch Wells, SN93 47, John Crellin, Sue Goodhead, Joan Millard, Alan Salter & Tess Lister, det. John Crellin, 16th Mar 2022.
- 153/12.01. *Schedonorus pratensis* (Meadow Fescue) (Peiswellt). Llwyn Cus, SN92 50, Ray Woods, John Crellin & Jenny Farrow, 6th Jul 2022.
- +153/21.1. *Catapodium rigidum* (Fern-grass) (Gwenithwellt Caled). Allt Troedrhiw-fer, SN84 33, John Crellin & Sue Goodhead, det. John Crellin, 15th Jun 2022, quarry floor; (+) Pen-yr-heol, SN99 11, Anne Griffiths & Joan Millard, 26th Jul 2022.
- +153/25.1. *Melica nutans* (Mountain Melick) (Meligwellt Pendrwm). Darren Ddu, SO22 13, John Crellin, Stephen Marshall, Anne Griffiths & Joanne Wilson, det. John Crellin, 8th Jun 2022, one plant on verge.
- ‡158/32.1. *Galanthus nivalis* (Snowdrop) (Eirlys). Llangammarch Wells, SN93 47, John Crellin, Sue Goodhead, Joan Millard, Alan Salter & Tess Lister, det. John Crellin, 16th Mar 2022.
- +159/05.08.‡ *Iris foetidissima* (Stinking Iris) (Gellesgen Ddrewllyd). Cwmdu, SO17 23, Anne Griffiths, Joan Millard & Sue Goodhead, 23rd Feb 2022.
- +162/03.4. *Epipactis helleborine* (Broad-leaved Helleborine) (Y Galdrist Lydanddail). Abergwesyn, SN85 52, John Crellin & Sue Goodhead, det. John Crellin, 23rd Jun 2022, a good population of 8 or more plants

RADNOR, v.c.43 (comm. E.R.Dean & S.M.Spencer)

- Ä036/2.1. *Parietaria judaica* (Pellitory-of-the-wall) (Paladr y Wal). Presteigne, SO31489 64313, E.R. Dean & S.M. Spencer, 4th Jan 2022, on New Year walk, Hereford Road at junction with Back Lane.
- \*©043/1.gig. *Chenopodium giganteum* (Tree Spinach) (Troed-yr-wydd Mawr). Knucklas, SO25 74, E.R. Dean & R.G. Woods, 10th Oct 2022, allotments, naturalising.
- \*‡047/3.1. *Fagopyrum esculentum* (Buckwheat) (Gwenith yr Hydd). Knucklas, SO25 74, E.R. Dean & R.G. Woods, 10th Oct 2022, allotments, naturalising.
- \*062/ERC.ves. *Eruca vesicaria* (Garden Rocket) (Roced yr Ardd). Presteigne, SO36, E.R. Dean, S.M. Spencer, K. van den Ende, C. Driver & J. Stevens, 4th Jan 2022, on New Year walk, in flower in Presteigne town car park.
- \*‡069/3.2. *Cyclamen coum* (Eastern Sowbread) (Bara'r-hwch y Gaeaf). Presteigne, SO36, E.R. Dean, S.M. Spencer, K. van den Ende, C. Driver & J. Stevens, 4th Jan 2022, on New Year walk, The Warden nr. Presteigne. Plants in flower. Naturalised.
- \*‡080/1.1. *Gunnera tinctoria* (Giant-rhubarb) (Rheonllys Mawr). The Banks, Cabalva Farm north,, SO23 46, E.R. Dean & R.G. Woods, 17th Aug 2022, pond, surviving. BIS day.
- \*135/26.3. *Crepis biennis* (Rough Hawk's-beard) (Gwalchlys Garw). Glan Dulas, SO024 541, R.G. Woods, 26th May 2022, hundreds of plants, new embankment on re-aligned A470, east of Red House, Cwmbach Llechrhyd.
- \*‡139/1.1. *Aponogeton distachyos* (Cape-pondweed) (Alaw De Affrica). Oaklea Park, SO30 65, E.R. Dean & S.M. Spencer, 30th Apr 2022, pond by allotments at Withy Beds.
- \*151/1.26.sub. *Juncus effusus* var. *subglomeratus*. Gors Goch SSSI, SN893 633, Mark Duffell, 10th Aug 2022.
- \*153/18.01. *Poa infirma* (Early Meadow-grass) (Gweunwellt Cynnar). Creigiau Dolfolau, SN913 656, R.G. Woods, 22nd Oct 2022, amongst gravel in upper drawdown zone of Garreg Ddu reservoir below Craig Dolfaenog.

CARMARTHEN, v.c.44 (comm. R.D. Pryce)

- +015/2.5.a. *Asplenium trichomanes* subsp. *trichomanes* (a subspecies of Maidenhair Spleenwort). Llandeilo Abercywyn, SN3153 1238, BSBI Meeting, 7th Jul 2022, on Old Red Sandstone cliff; (+) Heol Mansant Pontyates, SN46095 09809, R.D.Pryce & K.A.Pryce, 30th Apr 2022, one plant growing from crack in partly vegetated grit boulder forming part of hedgebank, on shady laneside.
- +031/5.03. *Fumaria bastardii* (Tall Ramping-fumitory) (Mwg-y-ddaeear Grymus). Penback Farm, Llanboidy, SN235 207, Matt Sutton, 1st Jul 2022, in regenerating barley stubble.
- +040/3.1. © *Carpinus betulus* (Hornbeam) (Oestrywdden). West of Green Bridge, Pendine, SN22056 09159, Ian K. Morgan, 27th Jul 2022, planted in hedge at corner of entrance splay to East Pool farm. Also planted *Acer campestre*.

- \*046/15.1. *Polycarpon tetraphyllum* (Four-leaved Allseed) (Gorhadog). National Botanic Garden of Wales, Lanarthne, SN520 182, Andy Shaw, 1st Jul 2022, locally abundant in grit hard-standing outside the horticulture block.
- +046/20.04. *Silene vulgaris* (Bladder Campion) (Gludlys Codrwrth). Whitland old creamery site, SN20153 16522, Matt Sutton, 10th Sep 2022, brownfield site.
- +047/.4.? *Polygonum polycnemiforme* (Bushy Knotgrass). Eithinduon, Llangynnin, SN2479 2038, WWBIC recording meeting, 1st Jul 2022, limestone-gravel surfaced yard.
- +047/4.bel. *Polygonum agrestinum* (Red-knotgrass). Eithinduon, Llangynnin, SN2479 2038, WWBIC recording meeting, 1st Jul 2022, limestone-gravel surfaced yard, Herb.NBGW
- +047/5.1×3. *Fallopia ×conollyana* (*F. japonica* × *F. baldschuanica*). Llandybie, SN619 153, Kevin McGinn, 21st Jul 2022, garden weed growing in vicinity of both parents.
- \*047/8.21. ©*Rumex maritimus* (Golden Dock) (Tafolen Felen). Ammanford, SN63003 12101, Ian K. Morgan, 18th Aug 2022, single plant growing as a weed in a recently planted swale in the car park in the centre of the town. Herb.NBGW
- 052/1.2. *Tilia cordata* (Small-leaved Lime) (Pisgwydden Dail Bach). Waun Tir Bryn, Pont Aber, SN74055 22369, R.D. & K.A. Pryce and Lobby & Georgie Bailey, 27th Jun 2022, one small tree on north-east-facing side of wooded Afon Sawdde ravine. New site.
- +061/2.11×16. *Salix ×subsericea*. Pembrey Burrows LNR, SS41312 99599, R.D.Pryce & K.A. Pryce, 6th May 2022, one bush each of *Salix cinerea*, *S. repens* and *S. ×subsericea* growing adjacent to each other in dune grassland at south-west corner of pond.
- 061/2.16. *Salix repens* (Creeping Willow) (Corhelygen). Waun Tir Bryn, Pont Aber, SN73850 22464, R.D. & K.A. Pryce and Lobby & Georgie Bailey, 27th Jun 2022, one plant at scrubby edge of unmanaged *Molinia* dominated area. New tetrad.
- \*062/21.4. *Draba muralis* (Wall Whitlowgrass) (Llysiau'r-bystwn y Muriau). Llandybie, SN619 153, Kevin McGinn, 31st May 2022, a single plant growing beneath an old lime mortar garden wall.
- +†062/31.2. *Lepidium didymum* (Lesser Swine-cress) (Olbrain Bach). Eithinduon, Llangynnin, SN2482 2035, WWBIC recording meeting, 24th Aug 2022, garden adjacent to house.
- 067/1.1.b. *Monotropa hypopitys* subsp. *hypophegea*. Burry Port, SN4481 0046, Stephanie Thomas, 30th Jun 2022, six to eight plants between the twin boundary walls of the site of the former Grillo works.
- 069/6.3. *Centunculus minimus* (*Anagallis minima*) (Chaffweed) (Gwlyddyn-Mair Bach). C9 Range, Pendine Burrows, SN27237 07400, Matt Sutton, 12th Jul 2022, three plants growing with abundant *Centaurium pulchellum* in one of the small patches de-turfed in the spring to create habitat for *Petalophyllum ralfsii*.
- +†074/08.1. *Tellima grandiflora* (Fringecups) (Clychau'r Clawdd). Horeb, SN1785 2755, R.D. & K.A. Pryce and Chris Maynard, 23rd Apr 2022, one plant on southern roadside hedgebank.



- +‡075/07.1. *Kerria japonica* (*Kerria*) (*Cerria*). NE of entrance to Penybank, Crwbin, SN46954 13010, Ian K. Morgan, 9th Apr 2022, the old garden form 'Pleniflora' growing at the edge of a minor road, presumably dumped.
- +075/13.1. *Geum rivale* (*Water Avens*) (*Mapgoll Glan y Dŵr*). Eithinduo, Llangynnin, SN2504 2047, WWBIC recording meeting, 24th Aug 2022, valley bottom under semi-natural woodland; (+) Bryn-y-mor, Kidwelly, SN3883 0727, Janet Higgins & Bob Ellis, 9th Jul 2022, by rocky track/winter stream.
- \*077/07.1.lap. *Anthyllis vulneraria* subsp. *lapponica*. Whitland old creamery site, SN201 165, Matt Sutton, 10th Sep 2022, brownfield site. First VC record of subspecies.
- +077/19.13. *Trifolium micranthum* (*Slender Trefoil*) (*Meillionen Hopysaidd Eiddil*). Pembrey Burrows LNR, SS41305 99601, R.D.Pryce & K.A. Pryce, 6th May 2022, south-west corner of vegetated pond. *Thalictrum flavum* locally frequent and *Ranunculus lingua* abundant here.
- 077/25.2. *Genista tinctoria* (*Dyer's Greenweed*) (*Melynog y Waun*). Waun Tir Bryn, Pont Aber, SN73930 22357, R.D. & K.A. Pryce and Lobby & Georgie Bailey, 27th Jun 2022, one plant in flower in Bracken-dominated area. New tetrad record.
- 077/25.4. *Genista anglica* (*Petty Whin*) (*Cracheithinen*). Waun Tir Bryn, Pont Aber, SN73827 22420, R.D. & K.A. Pryce and Lobby & Georgie Bailey, 27th Jun 2022, one large plant in flower and seed and three or four small plants growing in unmanaged Tussocky *Molinia*-dominated grassland with *Dryopteris carthusiana* locally abundant in the vicinity. New tetrad record.
- +‡084/4.3. *Oenothera biennis* (*Common Evening-primrose*) (*Melyn yr Hwyr*). Former Copperworks site, Llanelli, SS5081 9907, Richard D. Pryce, 28th Sept. 2022, on soil/sub-soil bund.
- +‡084/4.4. *Oenothera cambrica* (*Small-flowered Evening-primrose*) (*Melyn-yr-hwyr Mân-flodeuog*). Horeb, SN1826 2775, R.D. & K.A. Pryce and Chris Maynard, 23rd Apr 2022, on roadside bank.
- +‡085/2.1. *Aucuba japonica* (*Spotted-laurel*) (*Coeden Frech Felen*). Bynea, SS54819 99808, Ian K. Morgan, 15th Apr 2022, possibly bird-sown by footpath.
- +092/2.1. *Frangula alnus* (*Alder Buckthorn*) (*Breuwydden*). ©Glan y Mor LNR, Kidwelly, SN39933 06993, Ian K. Morgan, 19th Apr 2022, row of four planted *Frangula alnus* along path in wet section in NW part of site.
- 103/1.15. *Geranium pusillum* (*Small-flowered Crane's-bill*) (*Pig-yr-aran Fân-flodeuog*). Brynymor monad, SN3810 0742, Janet Higgins & Bob Ellis, 9th Jul 2022, new site.
- +107/43.3. *Torilis nodosa* (*Knotted Hedge-parsley*) (*Troed-y-cyw Clymog*). Near main entrance to MOD Pendine Test Ranges, SN26105 08641, Matt Sutton, 2nd Feb 2022, several plants on regularly mown grass roadside verge, flowering on 12/7/2022. 4th VC record.
- +118/01.5×6. *Stachys ×ambigua* (*Hybrid Woundwort*) (*Briwlys Croesryw*). Llandeilo Abercywyn, SN3100 1275, BSBI Meeting, 7th Jul 2022, at top edge of saltmarsh.
- +©124/SUT.cor. *Sutera cordata* (*Bacopa*). John Street, Llanelli, SN50614 00224, Ian K. Morgan, 8th Jun 2022, one white-flowered plant growing at the edge of the kerb presumably germinated from seed from a past year's hanging basket. 2nd VC record.

- \*‡131/6.5. *Lonicera henryi* (Henry's Honeysuckle) (Gwyddfifd Henry). Tan-y-Lan, near Llangadog, SN6974 2407, Matt Sutton, 14th Nov 2022, established throw-out by wooded track, growing with *Crococsmia x crocosmiflora*.
- +‡135/17.1. *Helminthotheca echioides* (Bristly Oxtongue) (Tafod-y-llew Gwrychog). Eithinduoan, Llangynnin, SN2482 2035, WWBIC recording meeting, 24th Aug 2022, garden adjacent to house.
- +135/24.1. *Mycelis muralis* (Wall Lettuce) (Gwylaeth y Fagwyr). Llanelli Railway Goods Shed, SS5103 9935, R.D.Pryce & K.A.Pryce, 18th Aug 2022, one plant on disused stone railway-platform wall.

The following *Taraxacum* records all determined or confirmed by Prof. A.J. Richards, November 2022.

- \*135/25.01.12. *Taraxacum fulvum* (Cinnamon-fruited Dandelion). Cilycwm road nr. Abergwenlais, SN75615 39352, R.D.Pryce & K.A.Pryce, 7th May 2022, on wide verge on north side of road, Herb.NMW
- +135/25.01.14. *Taraxacum inopinatum* (Unexpected Dandelion). Pembrey Burrows LNR, SS41403 99530, R.D.Pryce & K.A.Pryce, 6th May 2022, in dry dune grassland on sandy mound with rabbit diggings and latrines, Herb.NMW
- +135/25.01.2. *Taraxacum arenastrum* (Sand Dandelion). Pembrey Burrows LNR, SS41378 99607, R.D.Pryce & K.A.Pryce, 6th May 2022, in dry dune grassland. Herb.NMW
- +135/25.01.20. *Taraxacum pseudoproximum* (Essex Dandelion). Pembrey Burrows LNR, SS41401 99532, R.D.Pryce & K.A.Pryce, 6th May 2022, dry dune grassland on sandy mound with rabbit diggings and latrines, Herb.NMW
- +135/25.01.21. *Taraxacum retzii* (De Retz's Dandelion). Near Pantglas tumulus, Llanglydwen, SN21382 26201, R.D.Pryce & K.A.Pryce, 23rd Apr 2022, on hedgebank on west side of road. 2nd VC record, Herb.NMW
- +135/25.04.35. *Taraxacum faeroense* (Faeroes Dandelion). Pant-y-llyn Farm, Abernant, SN34992 25867, R.D.Pryce & K.A.Pryce, 14th May 2022, in wet acidic rushy meadow, Herb.NMW
- +135/25.07.60. *Taraxacum duplidentifrons* (Double-toothed Dandelion). New Lodge Wood, between Burry Port and Pwll, SN46029 01538, R.D.Pryce & K.A.Pryce, 20th Apr 2022, from vertical bank on north side of green lane through base-rich mature woodland on south-facing slope. Herb.NMW
- \*135/25.07.akt. *Taraxacum akteum* (Hampshire Dandelion). Dan-y-graig, Brechfa, SN46947 28511, R.D.Pryce & K.A.Pryce, 9th Apr 2022, on narrow mossy laneside verge. Extension of range. Herb.NMW
- +135/25.08.101. *Taraxacum subhamatum* (Large Hook-lobed Dandelion). South of Nolais, Cwmfelin Mynach, SN20865 24937, R.D.Pryce & K.A.Pryce, 23rd Apr 2022, on hedgebank on north-west side of road, Herb.NMW
- +‡135/25.08.93. *Taraxacum lancidens* (Spear-toothed Dandelion). Near Glasfryn, Cwmfelin Mynach, SN22417 24143, R.D.Pryce & K.A.Pryce, 23rd Apr 2022, on wide verge, west side of road, Herb.NMW

- +‡135/25.08.97. *Taraxacum pruinatum* (Pruinose Dandelion). East of Penplwyf, Llangydeyrn, SN45471 15442, R.D.Pryce & K.A.Pryce, 15th Apr 2022, in vicinity of new gateway on south side of road at base of hedgebank, Herb.NMW
- +135/25.08.sah. *Taraxacum sahlinianum* (Sahlin's Dandelion). South of Nolais, Cwmfelin Mynach, SN20860 24932, R.D.Pryce & K.A.Pryce, 23rd Apr 2022, on vegetated cut stump at top of hedgebank on north-west side of road, Herb.NMW
- +‡135/25.09.105. *Taraxacum acutifrons* (Acute-leaved Dandelion). Bryn-cyrnau, Cwmffrwd, SN43118 17615, R.D.Pryce & K.A.Pryce, 15th Apr 2022, at edge of large limestone chippings surfaced vision splay.
- +135/25.09.108. *Taraxacum alatum* (Green Dandelion). Plasgwyn, Horeb, SN17614 27462, R.D. & K.A. Pryce and Chris Maynard, 23rd Apr 2022, AJR comment: "long grass form". Growing amongst Blueberry plantings, Herb.NMW; (+) Aberlledle Road, NW of Waun-boeth, Pontyberem, SN48217 11238, R.D.Pryce & K.A.Pryce, 3rd Apr 2022, on acid roadside bank with adjacent low-cut hedge, Herb.NMW
- \*‡135/25.09.112. *Taraxacum angulare* (Angular-lobed Dandelion). New Lodge Wood, between Pwll and Burry Port, SN46023 01537, R.D.Pryce & K.A.Pryce, 20th Apr 2022, in base-rich mature woodland, near woodland edge, Herb.NMW
- +‡135/25.09.113. *Taraxacum angustisquameum* (Multilobed Dandelion). Suth of Cefn Mystrych, SN36960 21518, R.D.Pryce & K.A.Pryce, 14th May 2022, on large shaly surfaced gateway, Herb.NMW; (+) Near entrance to Tyllwyd Mawr, Login., SN43354 18991, R.D.Pryce & K.A.Pryce, 15th Apr 2022, on slope above small vegetated quarry, Herb.NMW
- +‡135/25.09.127. *Taraxacum densilobum* (Close-lobed Dandelion). Aberlledle Road, NW of Waun-boeth, Pontyberem, SN48220 11211, R.D.Pryce & K.A.Pryce, 3rd Apr 2022, on acid roadside bank with adjacent low-cut hedge, Herb.NMW
- +‡135/25.09.134. *Taraxacum exsertiforme* (Erect-bracted Dandelion). Near Glasfryn, Cwmfelin Mynach, SN22413 24116, R.D.Pryce & K.A.Pryce, 23rd Apr 2022, on wide roadside verge. 2nd VC record, Herb.NMW
- +‡135/25.09.145. *Taraxacum intumescens* (Red-tipped Dandelion). School Road, Pwll, Llanelli, SN47695 01229, R.D.Pryce, 26th Mar 2022, garden weed, Herb.NMW
- +‡135/25.09.149. *Taraxacum laeticolor* (Pale-stalked Dandelion). Bryn-cyrnau, Cwmffrwd, SN43135 17616, R.D.Pryce & K.A.Pryce, 15th Apr 2022, AJR comment: "gross overfed form". Growing on south side of road at edge of larch plantation. Also collected east of Penplwyf, Llangydeyrn at SN45459 15444 and SN45473 15445, R.D.Pryce & K.A.Pryce, 15th Apr 2022. All Herb.NMW
- +135/25.09.158. *Taraxacum longisquameum* (Elongate-bracted Dandelion). School Road, Pwll, Llanelli, SN47686 01209, Richard D. Pryce, 26th Mar 2022, garden weed, Herb.NMW
- \*‡135/25.09.168. *Taraxacum multicolorans* (Many-coloured Dandelion). Nr Llethr, Llandoverly, SN75261 35062, R.D.Pryce & K.A.Pryce, 7th May 2022, on verge under old oak tree on south side of road, Herb.NMW

- +‡135/25.09.176. *Taraxacum pachylobum* (Thick-lobed Dandelion). School Road, Pwll, Llanelli, SN47697 01210, Richard D. Pryce, 26th Mar 2022, garden weed. 2nd VC record, Herb.NMW
- +‡135/25.09.178. *Taraxacum pallescens* (Pink-stalked Dandelion). Near Pantglas tumulus, Llanglydwen, SN21384 26193, R.D.Pryce & K.A.Pryce, 23rd Apr 2022, at edge of 2m wide verge on east side of road, Herb.NMW
- +135/25.09.186. *Taraxacum polyodon* (Common Dandelion). Near entrance to Tyllwyd Mawr, Login, SN43346 18989, R.D.Pryce & K.A.Pryce, 15th Apr 2022, on north side of road above small vegetated quarry. Herb.NMW
- \*‡135/25.09.196. *Taraxacum scotiniforme* (Deltoid-lobed Dandelion). Entrance to Allt Penarth, SN65245 40590, R.D.Pryce & K.A.Pryce, 2nd May 2022, grassy bank between road and entrance track (W side of road), Herb.NMW
- +‡135/25.09.208 *Taraxacum sublongisquameum* (Roadside Dandelion). Rhydygorwen, Horeb, SN18346 27758, R.D. & K.A. Pryce, Chris Maynard and Julie Joliffe, 23rd Apr 2022, on north side of shady track, Herb.NMW
- \*135/25.09.118 *Taraxacum chlorofrugale* (A Dandelion). Pantyllyn, Blaenycloed., SN34708 25783, R.D.Pryce & K.A.Pryce, 12th May 2018, species-rich, semi-improved neutral grassland hayfield, Herb.NMW; (+) Heol Mansant Pontyates, SN46111 09855, R.D.Pryce & K.A.Pryce, 30th Apr 2022, shady laneside bank in bluebell wood, Herb.NMW; (+) Garn Ganol, Crwbin, SN47393 12560, R.D.Pryce & K.A.Pryce, 20th Apr 2019, in Waun Ganol species-rich, acid grassland pasture, 2nd VC record, Herb.NMW; (+) Cilgattw, Felingwm, SN51518 26364, R.D.Pryce & K.A.Pryce and Theresa Greenaway, 16th Apr 2022, semi-improved neutral grassland, west-facing slope. Also at SN 51497 26366; (+) East of Abernaint-fawr, SN64869 35489, R.D.Pryce & K.A.Pryce, 24th Apr 2021, grassy hedgebank, north side of road, Herb.NMW; (+) Carreg Sawdde Common, Llangadog, SN70591 27595, R.D.Pryce & K.A.Pryce, 15th May 2021, at edge of riverside gorse scrub on shingle, Herb.NMW; (+) Near Cilfara, Llanwrda, SN72140 33333, R.D.Pryce & K.A.Pryce, 7th May 2021, by small roadside lay-by under spreading oak tree, Herb.NMW
- \*135/25.eff. *Taraxacum effictum* inedit. Glanymor School Burry Port, SN44135 01173, R.D.Pryce & K.A.Pryce, 14th Apr 2022, on unmown verge of bus bays, Herb.NMW
- +135/25.pie. *Taraxacum pietii-oosterveldii*. Fronafon, Login, SN18321 23954, R.D. & K.A. Pryce and J.L. & P.E. Hartley, 5th May 2018, semi-improved neutral grassland pasture. 2nd VC record, Herb.NMW; (+) Brynceirch Farm, Blaenycloed, SN3376 2754, A.O. Chater, R.D.Pryce & K.A.Pryce, 12th Jul 2019, in middle of grassy path through scrub woodland by zig zag bend, Herb.NMW; (+) Wenallt, Meinciau, SN4717 1070, R.D.Pryce & K.A.Pryce, 11th May 2013, occasional in rhôs pasture. First collection of this species in Carms (species not described at that time), Herb.NMW; (+) Dan-y-graig, Brechfa, SN46951 28511, R.D.Pryce & K.A.Pryce, 9th Apr 2022, on narrow mossy roadside verge; (+) Esgair Llaethdy, SN78142 29942, R.D.Pryce & K.A.Pryce, 21st Apr 2021, in heavily sheep grazed wet acid grassland. Also in rushy, sheep grazed field between woodland belts at SN 78575 30047, Herb.NMW

- +‡135/43.4. *Erigeron karvinskianus* (Mexican Fleabane) (Amrhydlywyd y Cerrig). Hebron Chapel, SN18111 27699, Chris Maynard, 2nd Feb 2022, at the southern corner of the chapel graveyard.
- +‡135/43.fl.o. *Erigeron floribundus*. Whitland old creamery site, SN201 165, Matt Sutton, 10th Sep 2022, brownfield site.
- +©135/56.cor. *Chrysanthemum coronarium* (Crown Daisy) (Melyn-yr-^d Coronog). Kidwelly, SN4084 0704, Martyn O. Stead, 6th Jul 2022, car park near Kidwelly Castle.
- \*‡135/61.1. *Cotula coronopifolia* (Buttonweed) (Blodyn Botwm). Llandeilo Abercywyn, SN3153 1238, BSBI Meeting, 7th Jul 2022, frequent over perhaps 1ha of upper saltmarsh.
- +‡135/62.03. © *Senecio inaequidens* (Narrow-leaved Ragwort) (Creulys Gulddail). East end of MOD C9 track, Pendine Burrows, SN28493 07157, Matt Sutton, 23rd Jun 2022, one large plant at foot of south-facing wall of concrete structure. 2nd VC Record.
- +‡147/1.1. *Acorus calamus* (Sweet-flag) (Gellesgen Bêr). Welsh Wetland Centre, Penclacwydd, Llanelli, SS53761 98566, Ian K. Morgan, 15th Sep 2022, a couple of small clumps were planted here in the late 1990s on this then new water-body by Geoff Proffit and IKM and they have evidently spread considerably.
- +‡147/2.1. *Lysichiton americanus* (American Skunk-cabbage) (Pidyn-y-gog Americanaidd). Rhydygorwen, Horeb, SN1875 2762, R.D. & K.A. Pryce, Chris Maynard and Julie Joliffe, 23rd Apr 2022, on the bank of the Afon Taf bounding an unimproved field; presumably washed down river, known here for about 5 years.
- +‡148/2.val. *Lemna valdiviana*. Kidwelly Brickworks Pond, SN4026 0613, R.D.Pryce & K.A.Pryce, 4th Aug 2022, locally abundant in one section of vegetated and rather overgrown pond. Also at SN 4028 0611.
- 152/16.09.a. *Carex divulsa* subsp. *divulsa* (Grey Sedge). Road west of Penallt, Kidwelly, SN3857 0711, Janet Higgins & Bob Ellis, 9th Jul 2022, roadside hedgebank. New tetrad.
- +153/18.06. *Poa angustifolia* (Narrow-leaved Meadow-grass) (Gweunwellt Culddail). Penback Farm, Llanboidy, SN2366 2067, Matt Sutton, 1st Jul 2022, in rough grassland.
- 153/31.2. *Koeleria macrantha* (Crested Hair-grass) (Cribwellt). On edge of dune north of MOD C9 track, Pendine Burrows, SN2774 0738, Matt Sutton, 27th Apr 2022. New tetrad record.
- ‡153/46.2. *Polygonum viridis* (Water Bent) (Barfwellt y Dŵr). Kidwelly, SN4084 0704, M.O.Stead, 6th Jul 2022, car park near Kidwelly Castle. New tetrad record and first record for Kidwelly area.
- +153/50.3. *Bromus racemosus* (Smooth Brome) (Pawrwellt Llyfn). Llandeilo Abercywyn, SN3121 1295, BSBI Meeting, 7th Jul 2022, by track along edge of maize field. Also at SN 3153 1238.
- +‡153/52.5. *Anisantha madritensis* (Compact Brome) (Pawrwellt Cryno). Cwmbanfawr, Llanfynydd, SN5690 2806, Matt Sutton, 30th Jul 2022, three plants in farmyard.
- +‡153/68.1. © *Echinochloa crus-galli* (Cockspur) (Cibogwellt Rhydd). Llanelli Beach, SS496 996, Stuart Lewis, 2nd Sep 2022, det. from photograph by R.D. Pryce; (+)



- Dolycoed, Brynamman, SN6982 1435, BSBI Meeting, 9th Jul 2022, one plant near gateway to north-west corner of field.
- +‡159/02.1. *Sisyrinchium bermudiana* (Blue-eyed-grass) (*Sisirinciwm Glas Gwyddelig*). Cynheidre, SN49218 07692, Ian K. Morgan, 21st Jun 2022, one large flowering plant with a smaller specimen immediately adjacent in typically base-enriched flush (as noted at other ex-coal sites. Growing with *Pyrola rotundifolia*).
- +‡160/1.glo. *Yucca gloriosa* (Spanish-dagger). Pembrey Harbour, SN43832 00204, Ian K. Morgan, 12th Sep 2022, in dry dunes on east side of harbour; a garden in the nearby caravan site is a potential source.
- 162/09.1. *Liparis loeselii* (Fen Orchid) (*Tegeirian y Fign Galchog*). MOD East 4 Range, Pendine Burrows, SN3015 0718, BSBI Meeting, 10th Jul 2022, five plants. Last seen in Carms in 2002 and thought to have been extinct.
- \*162/16.1.b×18.1 *Gymnadenia densiflora* × *Dactylorhiza fuchsii*. West of Witchett Pool, MOD Pendine Burrows, SN2797 0758, BSBI Meeting, 10th Jul 2022, in rank, overgrown and scrubby, extensive M24 fen-meadow west of Witchett Pool, both parents in vicinity. Det. M.O. Stead & R.D.Pryce.
- +162/18.2×4. *Dactylorhiza* × *hallii*. Garn Ganol, Crwbin, SN47393 12610, R.D.Pryce & K.A.Pryce, 30th Jun 2022, growing near to a single plant of *Serratula tinctoria*.
- +‡024B/HOU.cor. *Houttuynia cordata*. Llandybie, SN614 616, Kevin McGinn, 6th Jun 2022, single shoot next to footpath gate and public refuse bin.

#### PEMBROKE, v.c.45 (comm. S.B. Evans)

- +028/13.11. *Ranunculus sceleratus* (Celery-leaved Buttercup) (*Crafanc yr Eryr*). Dowrog Common, St. Davids, SM7766 2760, Matt Sutton, 16th Oct 2022, dried bed of centre pond.
- +030/2.1.‡ *Papaver cambricum* (Welsh Poppy) (*Pabi Cymreig*). Wooded roadside, Llandilo-isaf, SN09902 26742, S.B.Evans, 10th May 2022, a few orange and yellow flowered plants naturalised on either side of shaded minor road. Almost certainly where garden waste had been dumped.
- +043/3.08. *Atriplex laciniata* (Frosted Orache) (*Llygwyn Ariannaid*). South of Hobbs Point, Pembroke Dock, SM9675 0390, Matt Sutton, 4th Jul 2022, edge of beach alongside brownfield site. It was frequent along the top edge of the beach here and to the north.
- +‡047/3.1. *Fagopyrum esculentum* (Buckwheat) (*Gwenith yr Hydd*). SSW of Ridgeway Lodge, Manorbier, SS0827 9979, Nigel Lee, 4th Sep 2022, over 30 plants by pheasant feeders on farmland.
- 050/1.1. *Elatine hexandra* (Six-stamened Waterwort) (*Gwybybyr Chwebrigerog*). Rosebush Reservoir, SN06 29, S.B.Evans, 8th Sep 2022, numerous plants in the draw-down zone at the end of the 2022 drought. Found from SN0615929718 to 0633329749 but it could have been further east again. At its only known locality in Pems where it had not been recorded since its discovery there in 1995.
- +051/1.06×07. *Hypericum* × *desetangii* (Des Etangs' St John's-wort) (*Eurinllys Des Etangs*). Pembroke Power Station, SM92 02, Tim Rich/Laura Grice, 26th Jul 2022.

- +†063/1.1. *Reseda luteola* (Weld) (Melengu). The Park, Martletwy, SN0366 1010, Matt Sutton, 4th Jul 2022, soil piles with *Spergula arvensis*.
- +073/1.1.† *Crassula tillaea* (Mossy Stonecrop) (Corchwyn Mwsoglog). Solva Woolen Mill, Middlemill, SM8055 2587, Matt Sutton, 22nd Nov 2022, edge of stone-surfaced car park.
- 073/5.5. *Sedum telephium* (Orpine) (Canewin). West of Aberfforest, Dinas Cross, SN0249 3957, Nigel Lee, 28th Aug 2022, in hedgerow by coast path at top of sea-cliff. First coastal record in the hectad and first post 2000 record for hectad.
- +†074/08.1. *Tellima grandiflora* (Fringecups) (Clychau'r Clawdd). Wooded roadside, Llandilo-isaf, SN09932 26701, S.B. Evans, 10th May 2022, on side of shaded minor road where garden waste had been dumped.
- \*†075/13.3. *Geum macrophyllum* (Large-leaved Avens) (Maggoll Fawr)). Woodland, Gilfach Slate Quarry, Llangolman, SN12669 26916, Steve Chambers, 16th May 2022, first Pembrokes record. About 6 plants. Two in flower and 4 young growing on the riverside edge of the woodland path on the west side of the Eastern Cleddau. In Ceredigion where it has been spreading fast in recent years it is often on the edges of footpaths where it is probably vectored by people and their canines.
- \*†091/2.obl. *Euphorbia oblongata* (Balkan Spurge) (Llaethlys y Balcanau). Grassland, Philbeach, Marloes, SM80786 07445, Matt Sutton, 4th Jun 2022, rough grassland on edge of irrigation reservoir.
- 094/1.1. *Linum bienne* (Pale Flax) (Llin Culddail). Manorbier Bay, SS05256 97850, Paul Culyer, 26th May 2022, 3 plants in narrow grassy margin to *Prunus spinosa* scrub on coast path on sea-cliffs just west of Manorbier. First hectad record since 1980 when it was on the cliffs nearer Swanlake Bay.
- †103/1.23. *Geranium phaeum* (Dusky Crane's-bill) (Gweddw Alarus). Bee-Hall, NE of Pembroke, SN00372 01748, Julie Garlick, 17th Jun 2022, old gateway on minor road away from habitation. The second hectad record but the only post 2000 find.
- +†117/1.bon. *Verbena bonariensis* (Argentinian Vervain) (Ferfain yr Ariannin). Spittal, SM9739 2311, Nigel Lee, 2nd Jul 2022, recently planted hawthorn hedge out in what was an open field at Spittal primary school. Arrived with the soil?
- 118/23.1. *Mentha arvensis* (Corn Mint) (Mintys yr Âr). Carnhedryn, St. Davids, SM7978 2799, Matt Sutton, 13th Aug 2022, a few small patches in horse-grazed damp improved pasture. Only post 1972 record in hectad.
- †135/62.13. *Senecio squalidus* (Oxford Ragwort) (Creulys Rhydychen). NE of Norchard Farm, Penally, SS0835 9961, Nigel Lee, 15th Jan 2022, path through pasture. First post 1970 record.
- +152/16.46.a. *Carex lepidocarpa* (Long-stalked Yellow-sedge). Marloes Mere, Marloes, SM77669 08052, Matt Sutton, det. Arthur Chater, 27th Jul 2022, a single plant in swamp edge with *Baldellia ranunculoides*, *Eleogiton fluitans* and *Eleocharis palustris*.
- +153/50.2. *Bromus commutatus* (Meadow Brome) (Pawrwellt y Ddôl). Arable, Pembroke Power Station, SM927 030, Tim Rich/Laura Grice, det. Tim Rich, 29th Jul 2022, abundant at this NGR and frequent around fields in 3 monads SM9202, 9203, 9303.

- +153/50.3. *Bromus racemosus* (Smooth Brome) (Pawrwellt Llyfn). Grassland, Philbeach, Marloes, SM80296 07737, Matt Sutton, 4th Jun 2022, rough grassland on edge of irrigation reservoir.
- Ä †153/50.7. *Bromus secalinus* (Rye Brome) (Pawrwellt Bach). Arable, Pembroke Power Station, SM927 030, Tim Rich/Laura Grice, det. Tim Rich, 29th Jul 2022, abundant at this NGR and occasional around fields in 3 monads SM9202,9203,9303. First record since 1867.
- +‡153/70.pum.© *Setaria pumila* (Yellow Bristle-grass) (Cibogwellt Melyn). Trehill, Marloes, SM7738 0851, Matt Sutton, 8th Sep 2022, rare on track edge by potato field. *Echinochloa crus-gallii* on the same track edge and was also rare.
- +‡158/20.3. *Hyacinthoides hispanica* (Spanish Bluebell) (Clychau'r-gog Sbaenaidd). Druidston, SM8621 1683, Matt Sutton, 6th May 2022, beside coast path below hotel.
- +‡158/31.1. *Leucojum aestivum* (Summer Snowflake) (Eiraiidd yr Haf). Troopers Inn, Freystrop, SM96219 10153, Hume Gravell, 6th Apr 2022, winter pool in corner of potato field

#### CARDIGAN, v.c.46 (comm. S.P. Chambers)

- 015/2.1. *Asplenium adiantum-nigrum* (Black Spleenwort) (Duegredynen Goesddu). E-NE facing flanks of two adjacent grey dunes, c. 150 m W of the visitor centre at Ynys-las dunes NNR, SN608 941, A.O. Chater, S.P. Chambers & Aberystwyth Botanical Society, det. A.O. Chater & S.P. Chambers, 8th May 2022, several plants with young fronds just unfurling. Novel dune grassland habitat for this fern in the VC.
- +028/13.12‡ *Ranunculus lingua* (Greater Spearwort) (Llafnlys Mawr). Field pond, Nant Cledlyn Pingos SSSI, c. 0.5 km WNW of Aber, c. 1.75 km WNW of Cwrtnewydd, SN471 485, M.D. Sutton, 27th Jun 2022, large patches. Planted here (on an SSSI!) & not native in the county.
- †036/1.2. *Urtica urens* (Small Nettle) (Danhadlen Fach). Disturbed ground at field edge, by the Nantferwig, Y Ferwig, SN181 494, S.P. Chambers & Y.J. Samari, det. S.P. Chambers, 27th Jul 2022, a few plants. New site & tetrad for VC-rare archaeophyte.
- 039/4.5. *Quercus petraea* (Sessile Oak) (Derwen Mes Di-goes). Upland *Avenella flexuosa* - *Vaccinium myrtillus* grass-heath, SE-flank of Bryn-y-croffttau, c. 2.5 km S of Strata Florida/Ystrad Fflur, SN747 633, S.P. Chambers, 27th Jun 2022, one small, c. 30 cm tall, young treelet, appearing naturally seeded, below rock outcrops on slope. New VC alt. limit of 432 m (previous limit was 370 m).
- +‡045/2.2. *Claytonia sibirica* (Pink Purslane) (Porpin Pinc). Shingle on riverbank, Afon Grannell, Rhos Glyn-yr-Helyg, c. 1 km NE of Gorsgoch, SN494 515, D.L. Davies & Aberystwyth Botanical Society members, det. D.L. Davies, Aug 2022, single plant.
- 046/10.8. *Sagina maritima* (Sea Pearlwort) (Corwlyddyn Arfor). Edge of salted roadside verge, N-side of the A44(T) at Bwlch Nantyrarian, SN719 812, S.P. Chambers & T.G.J. Rayner, det. S.P. Chambers, 22nd May 2022, frequent scattered plants extending for at least 50 m. New location, farthest inland site & new VC alt. limit of 310 m (previous limit was 300 m).

- 046/17.1. *Spergularia rupicola* (Rock Sea-spurrey) (Troellig Arfor y Clogwyn). Side of dead, decorticate tree trunk lying on saltmarsh, saltmarsh of the Afon Teifi near Castle Farm, c. 500 m N of Old Castle Farm, Cardigan, SN166 469, S.P. Chambers & Y.J. Samari, det. S.P. Chambers, 22nd Apr 2022, one plant growing lignicolously, rooted in fissure in firm lignum. An unusual novel niche & substrate for the VC. The tree appeared to be an *Acer pseudoplatanus*, the hard lignum mimicking a rock crevice.
- 046/20.04. *Silene vulgaris* (Bladder Champion) (Gludlys Codrwrth). Grass verge, roadside c. 200 m NW of Ynysfergi, Borth, SN611 896, S.P. Chambers & H.F. Clow, det. S.P. Chambers, 4th Jun 2022, three plants. Probably from 'wildflower' seed mix augmenting otherwise semi-natural roadside grassland, i.e. non-native site.
- 050/1.1. *Elatine hexandra* (Six-stamened Waterwort) (Gwybybyr Chwebrigerog). Upland pool, Pond Rhosrydd, near Trisant, SN705 750, T.G.J. Rayner & S.P. Chambers, det. S.P. Chambers, 26th Apr 2022, a few stems, floating loose in water c. 2 m from shore on E-side. A new site for this VC-scarce plant; former mine reservoir pool, Llantrisant, below Banc Llwynnwch, SN728 747, S.P. Chambers, 18th May 2022, a few washed up stems in 'tideline' debris zone at edge. Updated record for the site, previously recorded here in 1959, 1975, 1984 & 1989; small hilltop pool in sheepwalk, below the E-flank of Banc Penygwernydd, c. 1.5 km NW of Pont-rhydygroes, SN730 742, S.P. Chambers, 24th May 2022, several patches on muddy-peaty bottom. New site for VC-rare plant.
- †053/1.3. *Malva sylvestris* (Common Mallow) (Hocysen). Nettle-bed in scrub patch in pasture, by the Nantferwig, Y Ferwig, SN182 495, S.P. Chambers & Y.J. Samari, det. S.P. Chambers, 27th Jul 2022, one plant. The 1st post-1970 record for the tetrad.
- 057/1.11. *Viola lutea* (Mountain Pansy) (Trilliw y Mynydd). Relatively agriculturally unimproved but overgrazed sheep pasture, c. 200 m N of Hafodau, Goginan, SN695 805, S.P. Chambers, 16th Jun 2022, three flowers on one spot. Yellow-flowered. A new tetrad on the W-edge of the species' range in the county.
- +061/2.01. † *Salix pentandra* (Bay Willow) (Helygen Bêr). *Molinia caerulea* mire - marshy grassland, below Maesnant, c. 1 km NW of Pumlumon Fach, SN774 882, S.P. Chambers, 23rd Aug 2022, c. 8 poorly-grown, tube-planted trees. Planted as 3 ft whips in 2009 by the Monts Wildlife Trust for their 'Pumlumon Project' (fide C. Faulkner).
- +†061/2.09. *Salix viminalis* (Osier) (Helygen Wiail). Roadside hedge, NE-side of minor road near track to 'Rocklands', c. 1.5 km NW of Penparc, SN197 495, S.P. Chambers, 18th Nov 2022, one bush. The 1st hectad record, at least for the VC46 part of SN14.
- +†062/11.4. *Barbarea verna* (American Winter-cress) (Berwr-y-gaeaf cynnar). Foot of wall in car park, Cardigan Town, SN180 460, Y.J. Samari, det. S.P. Chambers (from digital photograph), 31st Mar 2022, a few plants. The 1st hectad record, at least for the VC46 part of SN14.
- +062/12.4. *Rorippa palustris* (Marsh Yellow-cress) (Berwr Melyn y Gors). Planter in garden, Gilfach-wen, c. 3 km SE of Pentrefelin, SN639 479, S. Andrews, det. S.P. Chambers (March 2023), 16th Jul 2021, singleton. Likely a compost alien, appearing

- in planter used for Sweet Peas (pers. comm. Sarah Andrews); det. SPC from seed sample examined microscopically. The 1st hectad record, at least for the VC46 part of SN64.
- 062/23.5. *Cochlearia danica* (Danish Scurvygrass) (Llwylys Denmarc). Edge of salted roadside verge, N-side of the A44(T) at Bwlch Nantyrarian, SN718 812, S.P. Chambers & T.G.J. Rayner, det. S.P. Chambers, 22nd May 2022, a few plants. New VC alt. limit of 310 m (previous limit was 300 m).
- +1062/34.2.a. *Brassica napus* subsp. *oleifera* (Oil-seed Rape) (Rêp Had Olew). Disturbed soil at edge of coastal footpath, c. 200 m E of Bryn-y-mor, c. 1 km NW of Cardigan, SN170 473, S.P. Chambers & Y.J. Samari, det. S.P. Chambers, 22nd Apr 2022, one plant. The 1st hectad record, at least for the VC46 part of SN14.
- +069/4.3. *Lysimachia vulgaris* (Yellow Loosestrife) (Trewyn). Riverbank, W-bank of the Afon Aeron, Aberaeron, SN457 625, D. Hawkins, 23rd Jul 2022, single stand of c. 25 plants. The 1st hectad record since c. 1908.
- ±073/1.3. *Crassula helmsii* (New Zealand Pigmyweed) (Corchwyn Seland Newydd). Marshy grassland at edge of lake, NE-end of Llyn Eiddwen NNR, Trefenter, SN608 672, D.L. Davies & Aberystwyth Botanical Society members, det. S.P. Chambers, 10th Sep 2022, in small quantity. The 1st record of *C. helmsii* at Llyn Eiddwen NNR.
- +±074/08.1. *Tellima grandiflora* (Fringecups) (Clychau'r Clawdd). Dry bed of river channel, Afon Hirwaun by Pontbren Pwll-crwyn, c. 1 km NW of Cenarth, SN258 424, S.P. Chambers & Y.J. Samari, det. S.P. Chambers, 16th Oct 2022, one plant on shingle by wedged trunk of dead *Quercus*. The 1st hectad record, at least for the VC46 part of SN24.
- 075/08.0.03. *Rubus saxatilis* (Stone Bramble) (Corfiaren). Mossy wet rockface above stream in upland woodland, Nant Cwm-du ravine, c. 1 km SW of Dolgoch, SN800 554, D.L. Davies & S.P. Chambers, 19th Jun 2022, c. 12 plants. Seemingly unchanged since last recorded at the location in 1996.
- +±075/08.0.11. *Rubus cockburnianus* (White-stemmed Bramble) (Miaren Goeswen). Wide grassland verge, Aeron Valley Enterprise Park, c. 1.5 km NW of Ystrad Aeron, SN516 576, S.P. Chambers, 10th Apr 2022, colony c. 15 x 20 m naturalised. The 4th VC record.
- +±075/17.3.b. *Poterium sanguisorba* subsp. *balearicum* (Fodder Burnet) (Bwrned Ebran). Grass verge, roadside c. 200 m NW of Ynysfergi, Borth, SN611 896, S.P. Chambers & H.F. Clow, det. S.P. Chambers, 4th Jun 2022, two plants. From 'wildflower' seed mix.
- 075/19.14. *Alchemilla glabra* (Mantell-Fair Lefn). Neutral grassland in upland pasture, c. 350 m NE of Tan-y-gro, c. 1 km E of Ysybyty Ystwyth, SN741 714, S & C. Duller & Aberystwyth Botanical Society members, det. S.P. Chambers, 24th Jul 2022, colony of c. 10 plants over c.20 x 15 m. New site & tetrad for VC-uncommon axiophyte.
- +075/28.24. *Sorbus torminalis* (Wild Service-tree) (Cerddinen Wylt). Trackside hedgebank, c. 200 m N of Rhosrhydd, c. 1 km W of Trisant, SN706 759, S.P. Chambers & T.G.J. Rayner, det. S.P. Chambers, 26th Apr 2022, three short young trees planted. Clearly planted in hedge & not native here.



- 075/35.07. *Crataegus monogyna* (Hawthorn) (Draenen Wen). Upland *Avenella flexuosa* - *Vaccinium myrtillus* grass-heath, SE-flank of Bryn-y-croffttau, c. 2.5 km S of Strata Florida/Ystrad Fflur, SN747 633, S.P. Chambers, 27th Jun 2022, old-looking solitary individual below rock outcrops on slope. New VC alt. limit of 432 m (previous limit was 415 m).
- 077/25.2. *Genista tinctoria* (Dyer's Greenweed) (Melynog y Waun). Heathy grassland in upland pasture, c. 200 m N of Gistfaen, c. 1.5 km E of Ysbyty Ystwyth, SN744 717, S & C. Duller & Aberystwyth Botanical Society members, det. S. Duller, 24th Jul 2022, small colony of c. 8 plants. New site & tetrad for declining axiophyte.
- †080/1.1. *Gunnera tinctoria* (Giant-rhubarb) (Rheonllys Mawr). Sandy bank in sand & gravel quarry, Penparc quarry, Penyparc, SN201 480, S.P. Chambers & Y.J. Samari, det. S.P. Chambers, 10th May 2022, two young patches/plants over c. 2 x 1 m, clearly self-seeded. An unusual habitat for the VC, new tetrad & self-seeded from somewhere but not seen elsewhere in the vicinity.
- 084/6.1×2. *Circaea ×intermedia* (Upland Enchanter's-nightshade) (Llysiâu-Steffan yr Ucheldir). Ancient woodland, E-side of the Afon Rheidol S of Ysbyty Cynfyn, Coed Rheidol NNR, SN748 788, S.P. Chambers & D.L. Davies, det. S.P. Chambers, 21st May 2022, new tetrad record for VC-uncommon plant.
- +091/2.12. *Euphorbia portlandica* (Portland Spurge) (Llaethlys Portland). Shingle on foreshore, c. 0.5 km NE of Aberaeron, SN462 635, D. Hawkins, conf. S.P. Chambers (from digital photos, 17/3/2023), 24th Jul 2022, a new & only the 5th extant site in the county.
- +†103/1.03. *Geranium nodosum* (Knotted Crane's-bill) (Pig-yr-aran Glymog). S-facing stone-faced bank between trees at edge of burial yard, Siloam Chapel, Y Ferwig, SN184 496, S.P. Chambers, 31st May 2022, one plant naturalised. The 2nd VC record, Herb. SPC
- \*†107/04.2. *Eryngium planum* (Blue Eryngo) (Celynnen-y-môr Las). Shingle on foreshore, Aberaeron, SN463 635, D. Hawkins, 24th Jul 2022, one plant. The 1st VCR, supported by digital photograph. Perhaps matching cv. 'Blue Hobbit'.
- 107/44.1.max. *Daucus carota* subsp. *maximus* (Mediterranean Carrot). Road verges associated with road junction & new railway car park construction works, around the A487 & A4159 junction by Bow Street railway station, SN622 843, A.O. Chater, 10th Aug 2022, in vast quantity (tens of thousands of plants) over c. 0.5 ha. Almost certainly from seed-mix used on the new verges constructed 2020-2021. The 2nd VCR for the subsp.
- †111/2.1.palr. *Convolvulus arvensis* f. *pallidiroseus* P. D. Sell. Grass verge below hedge by track entranceway, NE-side of the A44(T) c. 0.5 km WNW of Blaengeuffordd, SN640 807, S.P. Chambers & H.F. Clow, det. S.P. Chambers, 25th Jul 2022, the first markedly inland (6 km) record since 1992, & new site & tetrad.
- +113/2.1.† *Nymphoides peltata* (Fringed Water-lily) (Lili'r-dŵr Eddiog). Field pond, Nant Cledlyn Pingos SSSI, c. 0.5 km WNW of Aber, c. 1.75 km WNW of Cwrtnewydd, SN471 485, M.D. Sutton, 27th Jun 2022, frequent. Planted here on an SSSI!.

- \*†118/LAV.ang. *Lavandula angustifolia* (Garden Lavender). Harbour wall, Aberaeron, SN456 629, D. Hawkins, 23rd Jul 2022, single tiny plant growing out of SW-facing wall. The 1st VCR.
- +121/1.3.b. *Plantago major* subsp. *intermedia*. Damp trackside, Trychrug hill, 2.5 km E of Cilcennin, SN543 598, D. Hawkins, 18th Jul 2022.
- 124/02.2. *Scrophularia auriculata* (Water Figwort) (Gwrnerth y Dŵr). Wet woodland, Afon Hirwaun, Pont y Cwm, c. 1 km WNW of Capel Tygwydd, SN260 439, S.P. Chambers, 28th Oct 2022, one large collapsed plant below stonebridge. Only the 2nd tetrad record for SN24, at least for the VC46 part; marshy grassland, Llain-fach, Blaen-gors, c. 1.5 km S of Dihewyd, SN486 640, S.P. Chambers, 8th Jun 2022, c. 4 plants at edge of path. Another new site & tetrad for this increasing species; gravelly track edge by sewage treatment works, NE-end of Ynysfergi, Borth, SN615 897, S.P. Chambers & H.F. Clow, det. S.P. Chambers, 4th Jun 2022, patch c. 2 x 1 m. Another new site & tetrad for this increasing species.
- 130/6.07. *Galium album* (Hedge Bedstraw) (Briwydd y Clawdd). Grass verge, roadside c. 200 m NW of Ynysfergi, Borth, SN611 896, S.P. Chambers & H.F. Clow, det. S.P. Chambers, 4th Jun 2022, several patches along a c. 5 m length. Undoubtedly from 'wildflower' seed mix augmenting otherwise semi-natural roadside grassland, i.e. non-native site.
- 131/2.1. *Viburnum opulus* (Guelder-rose) (Gwifwrnwydden y Gors). Semi-natural woodland, c. 150m N of St Tygwydd's church, Llandygydd, SN242 439, S.P. Chambers, 18th Oct 2022, one bush on E-facing slope. New site & tetrad for a native occurrence.
- †131/5.1. *Leycesteria formosa* (Himalayan Honeysuckle) (Bachgen Llwm). Railed burial plot in graveyard, St Tygwydd's church, Llandygydd, SN242 437, S.P. Chambers, 18th Oct 2022, one presumably bird-sown plant. Only the 2nd tetrad, at least for the VC46 part of the hectad.
- 135/21.2. *Sonchus arvensis* (Perennial Sow-thistle) (Llaethysgallen y Tir Âr). *Deschampsia caespitosa* - *Molinia caerulea* vegetation beside track on former metal mine, Esgair-fraith mine, SN739 911, S.P. Chambers & D.M. Lamacraft, det. S.P. Chambers, 23rd Sep 2022, four stems. New VC alt. limit of 405 m (previous limit was 305 m).
- +†135/43.4. *Erigeron karvinskianus* (Mexican Fleabane) (Amrhydlywyd y Cerrig). Roadside wall by church, St Tygwydd's church, Llandygydd, SN242 438, S.P. Chambers, 18th Oct 2022, one plant looking convincingly self-sown. The 1st hectad record, at least for the VC46 part of SN24.
- 135/43.6 *Erigeron acris* (Blue Fleabane) (Amrhydlywyd Glas). Sandy field, adjacent to the Penparc sand & gravel quarry, Penparc, SN203 488, Y.J. Samari, 31st Oct 2022, a strong colony of at least c. 20 plants in. The 1st record hereabouts outside the actual sand quarry.
- \*†135/ISM.car. *Ismelia carinata* (Tricolour Chrysanthemum). Arable field, Llanerchaeron Estate (National Trust), c. 3.5 km SE of Aberaeron, SN484 601, D. Hawkins, 18th Jul 2022, single plant in the midst of other arable plants. Undoubtedly from a

- 'wildflower' seed mix used on the field. The 1st VCR, supported by digital photograph.
- +‡138/4.1. *Elodea canadensis* (Canadian Waterweed) (Ffugalaw Canada). Embayment at SE-corner of upland lake, Llyn Frongoch, near Trisant, SN722 751, S.P. Chambers & T.G.J. Rayner, det. S.P. Chambers, 26th Apr 2022, substantial submerged colony over c. 5 x 3 m & smaller amounts of floating loose stems.
  - 152/13.1. *Rhynchospora alba* (White Beak-sedge) (Corsfrwynen Wen). Upland basin mire, c. 400 m NE of Blaen-Glasfrwd, c. 3 km SE of Strata Florida/Ystrad Fflur, SN771 635, S.P. Chambers, 12th Jul 2022, locally frequent over at least 30 x 50 m in peaty runnels. New site & tetrad for VC-scarce axiophyte.
  - 152/16.08.b. *Carex muricata* subsp. *pairae* (Small-fruited Prickly-sedge). Sandy slope in quarry, Penparc quarry, Penyparc, SN204 487, S.P. Chambers & Y.J. Samari, det. S.P. Chambers (July 2022), 10th May 2022, one clump. Identified from sampled tuftlet grown on in garden pot. A new tetrad & novel habitat for the VC.
  - 152/16.59. *Carex magellanica* (Tall Bog-sedge) (Hesgen Eurwerdd Lefn). Upland mire, 1 km E of Llyn Rhuddnant, SN817 782, D.L. Davies, Jul 2022, last recorded at the site in 1998.
  - 153/14.2. *Vulpia bromoides* (Squirreltail Fescue) (Peisgwelld Cynffon Gwiwer). Edge of forestry track, Blaen-Glasfrwd, Tywi Forest, SN770 639, S.P. Chambers, 5th Jul 2022, one plant on edge. New VC alt. limit of 400 m (previous limit was 370 m).
  - ‡153/17.3 *Briza maxima* (Greater Quaking-grass) (Crydwelld Mawr). Roadside, Pen-bont Rhydybeddau, SN678 835, D.L. Davies, 20th May 2022, naturalised.
  - \*153/18.01. *Poa infirma* (Early Meadow-grass) (Gweunwelld Cynnar). Dry edge of roadside verge, SE-side of the A44(T) below Bwlch Nantyrarian, SN714 810, S.P. Chambers & T.G.J. Rayner, det. S.P. Chambers, 22nd May 2022, one plant, Herb. SPC
  - 153/18.09. *Poa compressa* (Flattened Meadow-grass) (Gweunwelld Cywasgedig). Dry kerb edge on roadside verge, N-side of the A44(T) at Bwlch Nantyrarian, SN719 812, S.P. Chambers & T.G.J. Rayner, det. S.P. Chambers, 22nd May 2022, occasional plants. New site for VC-uncommon plant.
  - +153/46.1. © *Polypogon monspeliensis* (Annual Beard-grass) (Barfwelld Unflwydd). Pavement by wall, Bridge Street, Lampeter, SN580 479, T.G.J. Rayner, 16th Jun 2022, one plant. The 5th VC record & new for at least the Cards. part of SN54.
  - +‡153/46.2. *Polypogon viridis* (Water Bent) (Barfwelld y Dŵr). Pavement edges, SE-ends of Albert Street & Water Street, Aberaeron, SN459 627, S.P. Chambers, 9th Apr 2022, occasional plants; edge of roadside kerb, Cefn Melindwr, Capel Bangor, SN658 801, S.P. Chambers, 27th May 2022, one plant. Very likely to have been inadvertently introduced by the recorder.
  - +158/24.03.bul. *Allium roseum* var. *bulbiferum*. S-facing stone-faced bank between trees at edge of burial yard, Siloam Chapel, Y Ferwig, SN184 496, S.P. Chambers, 31st May 2022, colony of c. 5 plants over c. 0.5 x 0.5 m. The 4th VC location

MONTGOMERY, v.c.47 (comm. Kate Thorne and Gill Foulkes)

- +017/1.1. *Polystichum setiferum* (Soft Shield-fern) (Gwrychredynen Feddal). Lake Vyrnwy (Hirddu Fach), SH95 20, Gillian Foulkes & Pete Foulkes, 29th Mar 2022, upland grassland and moorland on NW bank of Afon Hirddu Fach.
- +028/13.11. *Ranunculus sceleratus* (Celery-leaved Buttercup) (Crafanc yr Eryr). Machynlleth, SH74 01, D. Elias, 3rd Jun 2022, casual in muddy depression at roadworks for new viaduct opposite Machynlleth Eco park.
- +†036/1.1.2. *Urtica urens* (Small Nettle) (Danhadlen Fach). Llanfechain, SJ18 20, S. Swindells, 3rd Jul 2022, 2 stands growing on dumped soil/bricks on river bank.
- +051/1.06×07. *Hypericum ×desetangii* (Des Etangs' St John's-wort) (Eurinllys Des Etangs). Round Bank, SO21 88, Shanklin, J.D., 5th May 2022, at the *H. maculatum* end of the spectrum, but some translucent glands present.
- +052/1.2. *Tilia cordata* (Small-leaved Lime) (Pisgwydden Dail Bach). Coedydd y Beili SSSI, SN899 838, C. Forster-Brown, 24th Jun 2022, good-sized tree with hundreds of nearby saplings.
- +061/2.01×02. ‡ *Salix ×meyeriana* (*S. pentandra* × *S. fragilis*) (Shiny-leaved Willow) (Helygen Loywddail). River Severn south of Llandrinio, SJ31 16, M. Duffell, 17th Sep 2022, specimen retained. Pictures on iRecord.
- ♣+062/12.3. *Rorippa islandica* (Northern Yellow-cress) (Berwr Melyn Gogleddol). Caerhowel (N of river), SO203 981, A.K. Thorne, conf. T.Rich, 14th Oct 2022, river shingle, fruiting.
- +062/12.4. *Rorippa palustris* (Marsh Yellow-cress) (Berwr Melyn y Gors). Morben Isaf, SN7045 9844, G. Foulkes, 13th Jul 2022, disturbed road verge between caravan park and Dyfi Osprey, fruiting.
- +062/12.5. *Rorippa sylvestris* (Creeping Yellow-cress) (Berwr Melyn Ymlusgol). Meifod, SJ1692 1391, K. Thorne, G. Foulkes & M. Lawley, 31st Aug 2022, Vyrnwy river margin.
- ♣+062/14.3. *Cardamine amara* (Large Bitter-cress) (Berwr Chwerw Mawr). Ty du Wood, Bodynfoel (Llanfechain), SJ17 20, R. Dawes & Montgomeryshire Flora Group, 28th Apr 2022, mixed woodland and parkland.
- +062/34.5. ‡ *Brassica nigra* (Black Mustard) (Mwstard Du). Berriew (W of), SJ16 00, R.A. Dawes, 19th Jun 2022, arable.
- \*†062/38.1. *Hirschfeldia incana* (Hoary Mustard) (Mwstard Llwyd). Canal bank, Montgomery Canal, Pool Quay, SJ25 12, Kate Thorne & John Thorne, det. Kate Thorne, 8th Nov 2022, couple of plants by canal towpath; (\*) canal bank, Montgomery Canal, Wern, SJ25 13, Sue Southam & Kate Thorne, det. Kate Thorne, conf. M. Duffell, 30th Oct 2022, several widespread plants along margins of canal towpath, first collected in flower with very young fruits 29/9/22, later with more mature fruits 30/10/22.
- +062/4.1. *Arabidopsis thaliana* (Thale Cress) (Berwr y Fagwyr). Hafoty Cedig (NE of Vyrnwy), SH99 25, Gillian Foulkes & Pete Foulkes, 1st Jul 2022, stock gathering area.
- ♣+†062/42.1.a. *Raphanus raphanistrum* subsp. *raphanistrum* (Wild Radish) (Rhuddygl Gwyllt). Cem maes Road, SH81 03, G. Foulkes, 15th Sep 2022, recently disturbed road verge at SH813039. White petalled; (♣+) Trehelig, SJ2137 0219, A.K. Thorne, 3rd Oct 2022, central GR for large gravel bank by river. a few flowering/fruiting plants.

- ♣+075/09.14×15. *Potentilla ×mixta* (*P. erecta* × *P. reptans* & *P. anglica* × *P. reptans*) (Hybrid Cinquefoil) (Pumnaalen Groesryw). Powis Castle, SJ218 066, A.K. Thorne & G. Foulkes, det. A.K. Thorne, 17th Jun 2022, Dairy Pool and surrounds (NT Estate).
- +075/13.1. *Geum rivale* (Water Avens) (Mappgoll Glan y Dŵr). Llanmerewig, SO16 92, G. Foulkes & Montgomeryshire Flora Group, 14th Jun 2022, small stand on main road verge through woodland.
- +075/15.2. *Agrimonia procera* (Fragrant Agrimony) (Llysiâu'r-dryw Pêr). Berriew (Dinnant), SJ13 02, Kate Thorne & John Thorne, 24th Jun 2022, good stand on road verge and bank, fruiting.
- +077/14.08. *Vicia tetrasperma* (Smooth Tare) (Ffacbysen Lefn). Ty Bain, SJ19 21, S. Swindells, 13th Jun 2022, laneside hedge/hedgebank/verge.
- +077/18.5‡ *Medicago arabica* (Spotted Medick) (Maglys Brith). Wernllwyd, SJ2084 0273, A.K. Thorne, A.J. Hotchkiss & G. Foulkes, det. A.K. Thorne, 29th Sep 2022, maize field weed.
- +088/1.1. *Euonymus europaeus* (Spindle) (Piswydden). Coedydd y Beili SSSI, SN897 838, C. Forster-Brown, 29th Jun 2022, 20 small saplings and one larger just downstream of large waterfall.
- +‡117/1.1. *Verbena officinalis* (Vervain) (Y Ferfain). Derwenlas village, SN72 99, G. Foulkes, 18th Sep 2022, close to concrete slab bridge at SN7290.9998 in riverside grazing.
- \*‡117/1.bon. *Verbena bonariensis* (Argentinian Vervain) (Ferfain yr Ariannin). Llanfechain, SJ1888 2042, S. Swindells, conf. M. Duffell, 30th Aug 2022, single plant in churchyard.
- +118/23.1×3. *Mentha arvensis* × *M. spicata* = *M. ×gracilis* (Bushy Mint) (Mintys Culddail). Wernllwyd, SJ207 024, A.K. Thorne, 3rd Oct 2022, central GR for SW oxbow, flowering; (+) Cilcewydd, SJ222 036, A.K. Thorne, 3rd Oct 2022, edge of arable field, flowering.
- +118/23.4.‡ *Mentha suaveolens* (Round-leaved Mint) (Mintys Deilgrwn). Derwenlas village, SN72 99, G. Foulkes, 18th Sep 2022, disturbed road verge (E side) at SN728997.
- \*‡118/LAV.ang. *Lavandula angustifolia* (Garden Lavender). Machynlleth, SH70K, D. Elias, 5th Jun 2022, i small plant self-seeded in pavement crack.
- ♣+121/1.1. *Plantago coronopus* (Buck's-horn Plantain) (Llyriad Corn Carw). Derwenlas village, SN72 99, G. Foulkes, 8th Jun 2022, 1 plant at very edge of road verge.
- \*‡124/01.01 *Verbascum blattaria* (Moth Mullein) (Pannog y Gwyfyn). Penegoes, SH77 00, D. Elias, conf. M. Duffell, Jul 2022, 4 plants at entrance to small wood.
- ♣+124/20.07. *Euphrasia nemorosa* (Effros). Cwm Creignant (W of Trannon), SN8960 9523, Gillian Foulkes & Pete Foulkes, det. G. Foulkes, 18th Aug 2022, side of forestry track close to Allt Ddu LWS; (♣+) Bryn Perfedd NE of (Dyfnant), SH98 15, Gillian Foulkes & Pete Foulkes, det. G. Foulkes, 25th Jul 2022, trackside and banks/ditches/edge of plantation.
- ♣+124/20.19. *Euphrasia scottica* (Scottish Eyebright) (Effros Eiddil y Fawnog). Cwm Creignant (W of Trannon), SN8978 9549, Gillian Foulkes & Pete Foulkes, det. G.



- Foulkes, conf. C. Metherell, 18th Aug 2022, rushy mire at SN8978.9549 with *Pinguicula vulgaris* and *Linum catharticum*.
- +130/3.1. *Sherardia arvensis* (Field Madder) (Mandon Las yr ŷd). Pont Llogel (west of), SJ02 15, Gillian Foulkes & Pete Foulkes, 9th Jan 2022, on aggregate at entrance to Parc Llwydiarth.
- +‡135/19.1. *Tragopogon pratensis* (Goat's-beard) (Barf-yr-afr). Clatter, SN9932 9574, G. Foulkes, 14th Jul 2022, road bank.
- +135/23.2. *Cicerbita macrophylla* (Common Blue-sow-thistle) (Llaethysgallen Las). Lake Vyrnwy (E of), SJ00 21, G.A. Foulkes & Montgomeryshire Flora Group, det. Clayfield, J., 6th Jul 2022, likely garden escape.
- ⊞+‡135/28.07.dae. *Hieracium daedalolepioides* (Petite-leaved Hawkweed). Petite-leaved Hawkweed, SH9914 1171, P. Foulkes, det. Burrow, Brian, 8th Aug 2022, dry bank on side of sunken green lane.
- +‡135/35.1. *Inula helenium* (Elecampane) (Marchalan). Uwchlaw'r-coed (nr Clatter), SN9908 9600, G. Foulkes, 14th Jul 2022, road verge.
- +‡138/4.2. *Elodea nuttallii* (Nuttall's Waterweed) (Ffugalaw Nuttall). River Severn south of Llandrinio, SJ30 16, M. Duffell, 17th Sep 2022; (+) River Severn south of Llandrinio, SJ31 16, M. Duffell, 17th Sep 2022.
- \*142/1.01×06. *Potamogeton ×sparganiiifolius* (Ribbon-leaved Pondweed) (Dyfrllys Rhubanog). Montgomery Canal, Vyrnwy Aqueduct, SJ2541 1961, R.V.H. Lansdown, 29th Sep 2021, record submitted in 2022; couple of specimens lodged in herbarium at the Natural History Museum. Specimen to BM RVL 21/5.
- ⊞+142/1.07. *Potamogeton alpinus* (Red Pondweed) (Dyfrllys Coch). Twr-gwyn-bach (Carno Wind Farm), SN923 957, Kate Thorne & John Thorne, det. Preston, C.D., 4th Aug 2022, small quantity in small peaty pool/old man-made reservoir along course of stream.
- +148/2.1. *Lemna gibba* (Fat Duckweed) (Llinad Crythog). River Severn south of Llandrinio, SJ30 16, M. Duffell, 17th Sep 2022; (+) River Severn south of Llandrinio, SJ31 16, M. Duffell, 17th Sep 2022.
- +152/16.08.b. *Carex muricata* subsp. *pairae* (Small-fruited Prickly-sedge). Foel, SH99 11, A.K. Thorne, G Foulkes & Montgomeryshire Flora Group, 8th Aug 2022, along green lane.
- ⊞+152/16.09. *Carex divulsa* (Hesgen Lwyd). Coed Camnant Wood (Llanfechain), SJ171 206, J. Clayfield & Montgomeryshire Flora Group, det. A.K. Thorne, 28th Apr 2022, dry woodland bank.
- +153/12.02. *Schedonorus arundinaceus* (Tall Fescue) (Peiswellt Tal). Newtown (Bedw-Gwilym), SO09 93, Kate Thorne & John Thorne, 8th May 2022, lane hedge/bank.
- +‡153/28.5. © *Avena sativa* (Oat) (Ceirchen). Belan, SJ21 05, A.K. Thorne, G Foulkes & Montgomeryshire Flora Group, det. A.K. Thorne, 14th Sep 2022, arable field margin close to old lime kilns at Belan Locks.
- +‡153/59.1. © *Hordeum distichon* (Two-rowed Barley) (Haidd Dwyresog). Llanmerewig, SO15 92, David Elias & Montgomeryshire Flora Group, det. A.K. Thorne, 14th Jun 2022, lane hedge/verge.

- +153/59.2. *Hordeum murinum* (Wall Barley) (Haidd y Mur). Machynlleth, SH70K, D. Elias, 5th Jun 2022, 6-8 plants in gutter.
- \*‡153/70.1. *Setaria viridis* (Green Bristle-grass) (Cibogwellt Gwyrddlas). Floodplain, Dolydd Hafren, SJ203 000, M. Duffell, 24th Sep 2022, track; (\*) floodplain, Dolydd Hafren, SJ207 002, M. Duffell, 24th Sep 2022, arable/bird seed crop adjacent to Dolydd Hafren (triangular field within boundaries of MWT reserve).
- +159/05.08. *Iris foetidissima* (Stinking Iris) (Gellesgen Ddrewllyd). River Severn south of Llandrinio, SJ31 16, M. Duffell, 17th Sep 2022

MERIONETH, v.c.48 (J. Clark and H. Garrett)

- 001/3.1. *Lycopodium clavatum* (Stag's-horn Clubmoss) (Cnwp-fwsogl Corn Carw). Llyn Stwlan, SH64S, Meirionnydd Naturalists, 3rd Jun 2022; Cadair Idris, above Llyn Gafr, SH71B, Meirionnydd Naturalists Group, 18th Mar 2022.
- 001/4.1. *Diphasiastrum alpinum* (Alpine Clubmoss) (Cnwp-fwsogl Alpaidd). Llyn Stwlan, SH64S, Meirionnydd Naturalists, 3rd Jun 2022.
- 005/1.2. *Ophioglossum azoricum* (Small Adder's-tongue) (Tafod-y-neidr Bach). RSPB holding, Penllyn Farm, Tywyn, Gwynedd, SN59Z, Meirionnydd Naturalists Group, 20th May 2022.
- 005/2.1. *Botrychium lunaria* (Moonwort) (Lloer-redynen). Moel Fferna Quarry, SJ13J, A.N. & J.E.Graham, 3rd Jul 2022.
- ‡+011/1. *Polypodium cambricum* (Southern Polypody) (Llawredynen Gymreig). Trawsfynydd C, Llyn Trawsfynydd, SH63V, J.M. Parmenter, 23rd Oct 2022.
- 014/2.1. *Phegopteris connectilis* (Beech Fern) (Rhedynen Gorniog). Llyn Stwlan, SH64S, Meirionnydd Naturalists, 3rd Jun 2022.
- 015/2.3. *Asplenium obovatum* (Lanceolate Spleenwort) (Duegredynen Hirgul). Talsarnau C, SH63A, J.M. Parmenter, 24th Oct 2022.
- 015/2.6. *Asplenium viride* (Green Spleenwort) (Duegredynen Werdd). Cadair Idris, above Llyn Gafr, SH71B, Meirionnydd Naturalists Group, 18th Mar 2022.
- 016/5.1. *Cystopteris fragilis* (Brittle Bladder-fern) (Ffiolredynen Frau). Moelwyn Mawr, SH65 44, A. Turner, 13th Jun 2021.
- 028/02.1. *Trollius europaeus* (Globoseflower) (Cronnell). Tir Stent, SH71N, Meirionnydd Naturalists Group, 22nd Jul 2022.
- 028/17.4. *Thalictrum minus* (Lesser Meadow-rue) (Arianllys Bach). Cadair Idris, above Llyn Gafr, SH71B, Meirionnydd Naturalists Group, 18th Mar 2022.
- 030/2.1. *Papaver cambricum* (Welsh Poppy) (Pabi Cymreig). Cadair Idris, above Llyn Gafr, SH71B, Meirionnydd Naturalists Group, 18th Mar 2022.
- 030/4.1. *Glaucium flavum* (Yellow Horned-poppy) (Pabi Corniog Melyn). Morfa Dyffryn, SH52U, Meirionnydd Naturalists Group, 14th Oct 2022.
- 043/4.1.a. *Beta vulgaris* subsp. *maritima* (Sea Beet) (Betysen Arfor). Aber Dysynni shingle spit southern, Tywyn, Gwynedd, SH50R, H.M. Garrett, 12th May 2022; Morfa Dyffryn, SH52Q, Meirionnydd Naturalists Group, 14th Oct 2022.

- 046/04.2. *Minuartia verna* (Spring Sandwort) (Tywodlys y Gwanwyn). Hermon copper bog SSSI on spoil heap. Plant patch size approx. 1.5 m x 1.5 m., SH72M, Meirionnydd Naturalists Group, 25th Nov 2022; Hermon copper bog SSSI on wall of old derelict mine building, SH72M, Meirionnydd Naturalists Group, 25th Nov 2022; Dolydd, nr Hermon, Ganllwyd: Large pile of stones and waste timber deposited in the road to create roundabout near parking layby, SH72N, Meirionnydd Naturalists Group, 25th Nov 2022.
- 046/10.3. *Sagina subulata* (Heath Pearlwort) (Corwlyddyn Mynawydaidd). RSPB holding, Penllyn Farm, Tywyn, Gwynedd, SN59Y, Meirionnydd Naturalists Group, 20th May 2022.
- 046/16.1.† *Spergula arvensis* (Corn Spurrey) (Troellig yr Yd). Morfa Dyffryn, SH52R, Meirionnydd Naturalists Group, 14th Oct 2022; Maentwrog C, Llyn Trawsfynydd, SH63W, J.M. Parmenter, 23rd Oct 2022.
- +046/20.05. *Silene uniflora* (Sea Champion) (Gludlys Arfor). Hermon copper bog SSSI, SH72M, Meirionnydd Naturalists Group, 25th Nov 2022.
- ±+047/9.1. *Oxyria digyna* (Mountain Sorrel) (Suran y Mynydd). Moelwyn Mawr, SH6544, A. Turner, 13th Jun 2021.
- 057/1.06. *Viola canina* (Heath Dog-violet) (Fioled y Cŵn). RSPB holding, Penllyn Farm, Tywyn, Gwynedd, SN59Y, Meirionnydd Naturalists Group, 20th May 2022; Morfa Dyffryn, SH52R, Meirionnydd Naturalists Group, 14th Oct 2022.
- 061/2.21. *Salix herbacea* (Dwarf Willow) (Helygen Fach). Cadair Idris, SH71B, Meirionnydd Naturalists, 23rd Sep 2022.
- +062/12.4. *Rorippa palustris* (Marsh Yellow-cress) (Berwr Melyn y Gors). Maentwrog C, Llyn Trawsfynydd, SH63W, J.M. Parmenter, 23rd Oct 2022.
- ±+062/15.1. *Arabis petraea* (Northern Rock-cress) (Berwr-y-cerrig y Gogledd). Moelwyn Mawr, SH64, Alex Turner, 13th Jun 2021, recorded at 13 locations in 1kmsqs SH6544 and SH6545.
- 062/15.6. *Arabis hirsuta* (Hairy Rock-cress) (Berwr-y-cerrig Blewog). Cadair Idris, above Llyn Gafr, SH71B, Meirionnydd Naturalists Group, 18th Mar 2022.
- 062/42.1.b. *Raphanus raphanistrum* subsp. *maritimus* (Sea Radish) (Rhuddygl Arfor). Morfa Dyffryn, SH52U, Meirionnydd Naturalists Group, 14th Oct 2022.
- 064/1.1.b. *Empetrum nigrum* subsp. *hermaphroditum* (Mountain Crowberry) (Creiglusen Ddeurywiol). Rhinog Fawr, SH62M, A. Turner, 26th Aug 2019.
- ±+069/1.1×3. *Primula ×polyantha* (False Oxlip) (Briallen Groesryw). Gefail y Cwm, SH63C, Meirionnydd Naturalists, 22nd Apr 2022.
- ±+073/5.1. *Sedum rosea* (Roseroot) (Pren y Ddannoedd). Moelwyn Mawr, SH64, Alex Turner, 13th Jun 2021, recorded at 13 locations in 1kmsqs SH6544 and SH6545.
- ±073/5.spa. *Sedum spathulifolium* (Colorado Stonecrop) (Briweg Colorado). Talsarnau C, SH63A, J.M. Parmenter, 24th Oct 2022.
- 074/05.04. *Saxifraga stellaris* (Starry Saxifrage) (Tormaen Serennog). Moelwyn Mawr, SH64M, Meirionnydd Naturalists, 3rd Jun 2022.
- 074/05.11. *Saxifraga oppositifolia* (Purple Saxifrage) (Tormaen Porffor). Cadair Idris, above Llyn Gafr, SH71B, Meirionnydd Naturalists Group, 18th Mar 2022.

- ♣+074/05.16. *Saxifraga hypnoides* (Mossy Saxifrage) (Tormaen Llydandroed). Moelwyn Mawr, SH65 45, Alex Turner, 13th Jun 2021.
- 107/17.1. *Crithmum maritimum* (Rock Samphire) (Corn-carw'r Môr). Aber Dysynni shingle spit southern, Tywyn, Gwynedd, SH50R, H.M. Garrett, S. Dafydd, R. Kernohan, K. Carroll, 23rd May 2022; Tywyn promenade - north of Pier road, Tywyn, Gwynedd, SH50S, H.M.Garrett, 3rd Jun 2022.
- 107/23.1. *Meum athamanticum* (Spignel) (Ffenigl Elen Luyddog). Pant Glas, SH82K, Meirionnydd Naturalists, 24th Jun 2022; Pant Glas, SH82L, Meirionnydd Naturalists, 24th Jun 2022.
- 116/17.1. *Cynoglossum officinale* (Hound's-tongue) (Tafod y Bytheiad). Afon Dyffryn Gwyn canalised at Penllyn farm, Tywyn, SN59Z, Meirionnydd Naturalists Group, 20th May 2022; Morfa Dyffryn, SH52R, Meirionnydd Naturalists Group, 14th Oct 2022.
- +124/20.18. *Euphrasia micrantha* (Purple-stemmed Eyebright) (Effros Mân-flodeuog). Tan y Gader, SH71D, A.N.Graham; Dafydd Roberts, 13th Sep 2022.
- 125/2.08. *Orobanche hederæ* (Ivy Broomrape) (Gorfanhadlen Eiddew). Roman path, Aberdyfi. South of Picnic Island. SN69G, H.M. Garrett and S.F. Garrett, det. Sarah Stille, 9th Jul 2022.
- ♣+‡130/2.1. *Nertera granadensis* (Beadplant) (Nertera). Talsarnau C, SH63A, J.M. Parmenter, 24th Oct 2022.
- +130/6.01. *Galium boreale* (Northern Bedstraw) (Briwydd y Gogledd). Llyn Llagi gully/crags, SH64L, Foulkes G. and P., 19th Jun 2022.
- +135/04.1. *Saussurea alpina* (Alpine Saw-wort) (Lliflys y Mynydd). Llyn Arran, SH71H, P.Foulkes, J.Clayfield, det. J. Clark, 31st Aug 2022.
- 135/05.4. *Carduus nutans* (Musk Thistle) (Ysgallen Bendrom). Morfa Dyffryn, SH52R, Meirionnydd Naturalists Group, 14th Oct 2022; mTan-y-graig, SJ14K, A.N. & J.E.Graham, 3rd Jul 2022.
- ♣+135/09.1. *Serratula tinctoria* (Saw-wort) (Dant y Pysgodyn). Trawscoed, SH83L, A.N. & J.E.Graham, 27th May 2022.
- 135/26.1. *Crepis paludosa* (Marsh Hawk's-beard) (Gwalchlys y gors). Tir Stent, SH71N, Meirionnydd Naturalists Group, 22nd Jul 2022; Trawsfynydd C, Llyn Trawsfynydd, SH73D, J.M. Parmenter, 23rd Oct 2022.
- 135/28.01. *Hieracium sect. Sabauda*. Dolydd, near Hermon, Ganllwyd, SH72N, Meirionnydd Naturalists Group, 25th Nov 2022.
- ‡135/28.07.ang. *Hieracium angolorum* (Anglian Hawkweed). Llyn Llagi, SH64M, G. Foulkes and P. Foulkes, det. B. Burrow, 19th Jun 2022.
- ♣+152/16.26 *Carex riparia* (Greater Pond-sedge) (Hesgen-y-dŵr Fawr). Alder carr field next to RSPB holding at Penllyn farm, Tywyn, Gwynedd, SN59V, Meirionnydd Naturalists Group, 20th May 2022.
- ♣+152/16.28×29. *Carex ×involuta*. Pant Glas, SH82M, Meirionnydd Naturalists, 24th Jun 2022.
- ♣+152/16.69. *Carex bigelowii* (Stiff Sedge) (Hesgen Anystwyth). Y Llethr, SH62, Alex Turner, 10th Sep 2019, recorded at 5 locations covering 1kmsq; SH6625, SH6626; Cadair Idris, SH71, Alex Turner, 2019, recorded at 35 locations covering 1kmsq

- SH7012,SH7013,SH7113,SH7213; Cadair Idris, SH71B, Meirionnydd Naturalists, 23rd Sep 2022; Cadair Idris, SH71E, Meirionnydd Naturalists, 23rd Sep 2022; Aran Fawddwy/Aran Benllyn ridge, SH82, Alex Turner, 2019, recorded at 64 locations covering 1kmsqs SH8521,SH8522,SH8621,SH8622,SH8623,SH8624 on 25/09/2019 and 02/10/2019; (±+) Arenig Fawr, SH83, A. Turner, 18th Sep 2019, recorded at 37 locations covering 1kmsqs SH8236,SH8237.
- 162/02.2. *Cephalanthera longifolia* (Narrow-leaved Helleborine) (Y Galdrist Gulddail). Coed y Gofer, Aber Tafol, near Aberdyfi, SN69N, G. Foulkes and P. Foulkes. 14th May 2022.
- 162/06.1. *Neottia ovata* (Common Twayblade) (Caineirian). Tir Stent, SH71N, Meirionnydd Naturalists Group, 22nd Jul 2022.
- 162/13.1. *Platanthera chlorantha* (Greater Butterfly-orchid) (Tegeirian Llydanwyrdd). Trawscoed, SH83L, A.N. & J.E.Graham, 29th Jun 2022.
- ±+162/16.1. *Gymnadenia conopsea* (Fragrant Orchid) (Tegeirian Pêr). Muriau Gwyddelod, SH53V, A.N. & J.E.Graham, 20th Jun 2022.
- 162/16.1.c. *Gymnadenia borealis*. Tir Stent, SH71N, Meirionnydd Naturalists Group, 22nd Jul 2022.
- 162/18.4. *Dactylorhiza praetermissa* (Southern Marsh-orchid) (Tegeirian-y-gors Deheuol). Tir Stent, SH71N, Meirionnydd Naturalists Group, 22nd Jul 2022.
- 162/18.5. *Dactylorhiza purpurella* (Northern Marsh-orchid) (Tegeirian-y-gors Gogleddol). RSPB holding, Penllyn Farm, Tywyn, Gwynedd, SN59Y, Meirionnydd Naturalists Group, 20th May 2022; RSPB holding, Penllyn Farm, Tywyn, Gwynedd, SN59Z, Meirionnydd Naturalists Group, 20th May 2022; Tir Stent, SH71N, Meirionnydd Naturalists Group, 22nd Jul 2022.
- 162/20.3. *Anacamptis morio* ([Green-winged Orchid]) (Tegeirian y Waun). Harlech Golf Course, SH53R, A.N. & J.E.Graham, 23rd May 2022

#### CAERNARFON, v.c.49 (comm. W. McCarthy)

- \*001/3.lag. *Lycopodium lagopus* (Laest. ex Hartm.) Zinserl. ex Kusen: Clubmoss, Hare's-foot. Grass bank, Bethesda, SH69 62, Robbie Blackhall-Miles, conf. Fred Rumsey on 19/11/2023, 18th Dec 2021, comment by Fred Rumsey 'should be considered as this species'.
- +‡002/1.2. *Selaginella kraussiana* (Krauss's Clubmoss) (Cnwpl-fwsogl Krauss). Lawns of walled garden, Penrhyn Castle, SH60 71, N.H.Brown, 9th Jun 2022.
- +004/1.4×5. *Equisetum ×litorale* (Shore Horsetail) (Marchrawnen y Glennydd). Field edge, Llandudno, SH78 80, Wendy McCarthy, 9th May 2022.
- \*‡017/1.mun. *Polystichum munitum* (Western Sword-fern) (Gwrychredynen y Cledd). Footpath by river bank, Betws y Coed, SH79 56, W.McCarthy & M.Stead, 10th Mar 2022, first county record.
- +017/3.c. *Dryopteris affinis* subsp. *borreri*. Woodland, Pydew, SH81 79, W.McCarthy & M.Stead, 26th Oct 2022.
- \*‡028/07.1. *Consolida ajacis* (Larkspur) (Troed yr Ehedydd). Sandy ground near the shore, Llandudno, SH76 82, Wendy McCarthy, 25th Jul 2022.



- +029/1.1‡ *Berberis vulgaris* (Barberry) (Pren Melyn). Field edge at track side, Nant Ffrancon, Bethesda, SH63 63, W.McCarthy & M.Stead, 26th May 2022.
- +‡029/1.2. *Berberis thunbergii* (Thunberg's Barberry) (Pren Melyn Thunberg). Track side, Tregarth, SH59 66, W.McCarthy & M.Stead, 31st Oct 2022, 1st record. The record for SH78 is considered incorrect.
- \*033/1.3. *Ulmus minor* (Llwyfen Fanddail). Near laneside, Llanrug, SH53 62, Robbie Blackhall-Miles, 10th Sep 2019, first county record.
- +‡043/1.13. *Chenopodium ficifolium* (Fig-leaved Goosefoot) (Troed-yr-wydd Dail Ffigys). Arable field, Llanrhos, SH80 80, Wendy McCarthy, 28th Jun 2022.
- +‡046/07.03. *Cerastium tomentosum* (Snow-in-summer) (Clust-y-lligoden y Felin). Lane bank, Ysbyty Ifan, SH84 48, W.McCarthy & M.Stead, 27th Jul 2022.
- \*047/8.14×15. *Rumex ×ruhmeri*. Bank at side of stream, Llandudno Junction, SH79 78, M. Stead, det. J.Akeroyd, Aug 2022, first county record.
- +052/1.2. *Tilia cordata* (Small-leaved Lime) (Pisgwydden Dail Bach). Near laneside, Fachwen, SH56 62, Robbie Blackhall-Miles, 14th Nov 2021, two trees; (+) field edge, Llanrhos, SH79 80, Wendy McCarthy, 8th Jul 2022.
- \*062/21.4. *Draba muralis* (Wall Whitlowgrass) (Llysiau'r-bystwn y Muriau). Earth bank at road end, Llanllechid, SH63 69, W.McCarthy & M.Stead, 8th Oct 2022, first county record.
- \*062/23.3.a. *Cochlearia officinalis* subsp. *officinalis*. Salt marsh, Abergwyngregyn, SH66 74, W.McCarthy & M.Stead, det. Tim Rich, 8th Apr 2022, first county record, determined as *C. atlantica*.
- +‡062/31.1. *Lepidium coronopus* (Swine-cress) (Olbrain). Bare ground above the sea, Porth y Nant, SH34 44, W.McCarthy, M.Stead & Mari Roberts, 3rd Aug 2022.
- +062/42.1. *Raphanus raphanistrum* (Rhuddygl). Waste ground by field gateway, Caernarfon, SH45 60, W.McCarthy, M.Stead & Mari Roberts, 16th Sep 2022.
- +073/1.1.‡ *Crassula tillaea* (Mossy Stonecrop) (Corchwyn Mwsoglog). Farm track, Chwilog, SH43 37, Richard Birch, 17th Apr 2022.
- +073/5.11. *Sedum forsterianum* (Rock Stonecrop) (Briweg Gymreig). Wall at roadside, Capelulo, SH74 76, W.McCarthy, M.Stead & Mari Roberts, 11th Nov 2022, probable garden escape here & not native.
- \*‡073/5.2. *Sedum praealtum* (Greater Mexican-stonecrop) (Briweg Fawr Mecsico). Bank beside footpath, Penrhynside, SH80 81, Wendy McCarthy, 7th Jul 2022, noted here for several years but first seen in flower for identification this year.
- +‡073/5.7. *Sedum spurium* (Caucasian-stonecrop) (Briweg y Cawcasws). Lane bank, Ysbyty Ifan, SH84 48, W.McCarthy & M.Stead, 27th Jul 2022.
- +‡074/05.are. *Saxifraga ×arensii* (Garden Mossy-saxifrage). Quarry waste tip, Penmaenmawr, SH70 75, Julian Driver, det. Mike Crewe, 15th May 2022, first county record.
- +074/09.1. *Chrysosplenium oppositifolium* (Opposite-leaved Golden-saxifrage) (Eglyn Cyferbynddail). Damp track in woodland, Penrhynside, SH80 80, Wendy McCarthy, 23rd May 2022.

- +075/08.02.060 *Rubus lindleianus*. Roadside hedge, Ysbyty Ifan, SH84 48, Wendy McCarthy, 27th Jul 2022.
- +075/08.02.082. *Rubus silurum*. Roadside hedge, Ysbyty Ifan, SH84 48, Wendy McCarthy, 27th Jul 2022.
- +075/08.03.093. *Rubus cardiophyllus*. Roadside hedge, Tregarth, SH60 66, Wendy McCarthy, 1st Jul 2022, first record for hectad since since 1964.
- +075/08.11.268. *Rubus dasycphyllus*. Roadside hedge, Ysbyty Ifan, SH84 48, Wendy McCarthy, 27th Jul 2022.
- +075/21.04×12. *Rosa ×irregularis*. Hedgerow beside track, Penrhynside, SH81 81, Wendy McCarthy, 25th Oct 2022.
- +‡075/22.13. *Prunus lusitanica* (Portugal Laurel) (Coeden Lawrgeirios Portiwgal). Hedge by footpath, Betws y Coed, SH79 56, W.McCarthy & M.Stead, 10th Mar 2022.
- +‡077/02.1. *Galega officinalis* (Goat's-rue) (Nuw'r Geifr). Small abandoned field, Dolgarrog, SH76 67, Julian Driver, 1st Aug 2011, second county record.
- +077/14.08. *Vicia tetrasperma* (Smooth Tare) (Ffacbysen Lefn). Bank in lane, Rhiw, SH23 28, W.McCarthy & M.Stead, 22nd Jul 2022.
- +‡077/15.09. *Lathyrus latifolius* (Broad-leaved Everlasting-pea) (Ytbsyen Fythol Lydanddail). Sand dunes, Pwllheli, SH37 34, Caerns. Recording Group, 29th Apr 2022.
- +‡077/17.1. *Melilotus altissimus* (Tall Melilot) (Yr Wydro Dal). Small abandoned field, Dolgarrog, SH76 67, Wendy McCarthy, 9th Aug 2022.
- +077/18.5‡ *Medicago arabica* (Spotted Medick) (Maglys Brith). Grass verge, Parc Menai, near Bangor, SH54 70, W.McCarthy & M.Stead, 15th Jul 2022.
- +077/19.20. *Trifolium striatum* (Knotted Clover) (Meillionen Rychog). Demolition site, Fort Belan, SH44 60, Julie Rose, 6th Jul 2022.
- +077/19.22. *Trifolium scabrum* (Rough Clover) (Meillionen Arw). Short dry mown grass verge, Fort Belan, SH44 60, Julie Rose, conf. Wendy McCarthy, 6th Jul 2022, confirmed from photographs.
- +077/26.1×2. *Ulex ×breoganii* (*U. europaeus* × *U. gallii*). Limestone grassland, Little Orme, Llandudno, SH81 82, W.McCarthy, M.Stead & Mari Roberts, 30th Nov 2022, ovules counted.
- +‡107/04.2. *Eryngium planum* (Blue Eryngo) (Celynnen-y-môr Las). Disturbed sandy ground, West Shore, Llandudno, SH77 82, Wendy McCarthy, 23rd Sep 2022.
- +‡109/1.3. *Vinca major* (Greater Periwinkle) (Perfagl Fawr). Lane bank, Tregarth, SH60 66, W.McCarthy & M.Stead, 1st Jul 2022.
- +‡116/03.1. *Pulmonaria officinalis* (Lungwort) (Llysiau'r Ysgyfaint). Lane bank, Ysbyty Ifan, SH84 48, W.McCarthy & M.Stead, 27th Jul 2022.
- +‡117/1.bon. *Verbena bonariensis* (Argentinian Vervain) (Ferfain yr Ariannin). Lane bank, Gyffin, SH78 75, W.McCarthy & M.Stead, 2nd Sep 2022.
- +‡118/07.2. © *Phlomis fruticosa* (Jerusalem Sage) (Saets Caersalem). Cracks in concrete steps, Happy Valley, Llandudno, SH78 83, Wendy McCarthy, 9th Mar 2022, self-sown near mature planted shrubs.
- +‡124/16.19. *Veronica agrestis* (Green Field-speedwell) (Rhwyddlwyn-y-maes Gwyrdd). Limestone grassland, Little Orme, Llandudno, SH81 82, W.McCarthy, M.Stead & Mari Roberts, 30th Nov 2022.

- +‡129/1.4. *Campanula persicifolia* (Peach-leaved Bellflower) (*Clychlys Meinddail*). Slate waste tips, Llanllechid, SH63 69, W.McCarthy, M.Stead & Mari Roberts, 8th Oct 2022.
- +‡131/6.2. *Lonicera nitida* (Wilson's Honeysuckle) (*Gwyddfid Wilson*). Old field hedge, Rhiw, SH23 28, W.McCarthy & M.Stead, 22nd Jul 2022.
- +135/28.02.6.a. *Hieracium umbellatum* subsp. *umbellatum*. Lane bank, Ysbyty Ifan, SH83 48, Wendy McCarthy, 27th Jul 2022.
- +‡135/28.08.115. *Hieracium scotostictum* (Dappled Hawkweed). Roadside walls on both sides of road, Capelulo, SH74 76, W.McCarthy, M.Stead & Mari Roberts, 11th Nov 2022.
- +135/30.1. *Filago vulgaris* (Common Cudweed) (*Edafeddog Lwyd*). Centre of gravel track, Rhosgadfan, SH51 56, Julie Rose, 12th Jun 2022.
- +‡135/35.1. *Inula helenium* (Elecampane) (*Marchalan*). Rough grass at track side, Tregarth, SH60 67, W.McCarthy & M.Stead, 1st Jul 2022; (Ä) rough grass by track, Great Orme, Llandudno, SH77 82, Wendy McCarthy, 26th Jun 2022, first record for hectad in over 50 years.
- +‡135/58.lac×max. *Leucanthemum ×superbum* (*L. lacustre × L. maximum*) (Shasta Daisy) (*Y Llygad-llo Mwyaf*). Lane bank, Tregarth, SH60 66, W.McCarthy & M.Stead, 1st Jul 2022.
- +‡135/CAR.tin.© *Carthamus tinctorius* (Safflower) (*Safflwr*). Disturbed sandy ground, West Shore, Llandudno, SH77 82, Wendy McCarthy, 23rd Sep 2022.
- +‡147/5.2.b. *Arum italicum* subsp. *italicum*. Lane bank, Tregarth, SH60 66, W.McCarthy & M.Stead, 1st Jul 2022.
- +152/16.31 *Carex pendula* (Pendulous Sedge) (*Hesgen Bendrom*). Lane bank, Ysbyty Ifan, SH83 48, W.McCarthy & M.Stead, 27th Jul 2022.
- +153/14.2. *Vulpia bromoides* (Squirreltail Fescue) (*Peisgwellt Cynffon Gwiwer*). Dry bank at lane side, Ysbyty Ifan, SH83 48, W.McCarthy & M.Stead, 27th Jul 2022.
- +‡153/17.3 *Briza maxima* (Greater Quaking-grass) (*Crydwellt Mawr*). Bank in lane, Llanbedr-y-cennin, SH75 69, W.McCarthy & M.Stead, 13th May 2022; (+) pavement edge, Penrhynside, SH81 81, Wendy McCarthy, 25th Oct 2022.
- +‡153/46.2. *Polygonum viridis* (Water Bent) (*Barfwellt y Dŵr*). Pavement edge, Tregarth, SH60 66, W.McCarthy & M.Stead, 1st Jul 2022.
- +‡153/60.1.© *Triticum aestivum* (Bread Wheat) (*Gwenith*). Bank in lane, Rhiw, SH23 28, W.McCarthy & M.Stead, 22nd Jul 2022.
- +‡158/06.1. *Kniphofia uvaria* (Red-hot-poker) (*Procer Poeth*). Grass bank, Great Orme, Llandudno, SH76 82, Wendy McCarthy, 31st Jul 2022.
- +158/20.2×3. *Hyacinthoides ×massartiana* (*Clychau'r-gog Croesryw*). Footpath by river bank, Betws y Coed, SH79 56, W.McCarthy & M.Stead, 10th Mar 2022.
- +‡158/24.13. *Allium ampeloprasum* (Wild Leek) (*Cenhinen Wylt*). River bank, Afon Wen, SH44 37, Eddie Urbanski & Simon Hughston Roberts, 12th Jul 2022, second county record & first since 1876. Plants first noted in 2000.
- +‡158/32.1. *Galanthus nivalis* (Snowdrop) (*Eirlys*). Footpath edge, Betws y Coed, SH79 56, W.McCarthy & M.Stead, 10th Mar 2022.

- +‡158/33.6. *Narcissus cyclamineus* (Cyclamen-flowered Daffodil) (Cenhinen-Bedr Atblygol). Footpath by river bank, Betws y Coed, SH79 57, W.McCarthy & M.Stead, 10th Mar 2022.
- +158/33.Tet. *Narcissus* 'Tête à Tête'. Footpath by river bank, Betws y Coed, SH79 56, W.McCarthy & M.Stead, 10th Mar 2022.
- +‡160/3.1. *Cordyline australis* (Cabbage-palm) (Palmwydden Fresych). Wall base in lane, Rowen, SH75 72, W.McCarthy & M.Stead, 18th Oct 2022, self-sown seedlings, mature plant in nearby garden.
- +162/14.1. *Anacamptis pyramidalis* (Pyramidal Orchid) (Tegeirian Bera). Roadside field, Tregarth, SH60 66, W.McCarthy & M.Stead, 1st Jul 2022.
- +162/20.3. *Anacamptis morio* ([Green-winged Orchid]) (Tegeirian y Waun). Grassland by the sea, Pwllheli, SH37 34, Geraint Edwards, 22nd Apr 2022, three plants reported on 22/4/2022. (29 plants found in flower on 29/4/2022 by Caerns. Recording Group)

DENBIGH, v.c.50 (comm. D. Williams)

- +015/2.5.b *Asplenium trichomanes* subsp. *quadrivalens*. Fairy Glen, SH799 545, Denbs Group (D. Williams), 15th May 2022, woodland track.
- +017/3.03.a. *Dryopteris affinis* subsp. *affinis*. Llay, SJ33 55, J.D. Shanklin, 26th Dec 2022.
- +‡020/7.6. *Pinus strobus* (Weymouth Pine) (Pinwydden Wen). Llay, SJ33 55, J.D. Shanklin, 26th Dec 2022.
- +028/13.17.a. *Ficaria verna* subsp. *fertilis*. MynyddCauedig, SH79 69, F.J. Roberts & M.I. Roberts, 30th Apr 2022; (+) Holt, SJ408 541, Denbs Group (D. Williams), 2nd Jan 2022.
- +028/17.4. *Thalictrum minus* (Lesser Meadow-rue) (Arianllys Bach). Sydalit West, SJ3032 5522, Denbs Group (D. Williams), 6th Nov 2022, one large and a few more small patches on W side of lane on hedgebank. Origin?
- +031/5.03. *Fumaria bastardii* (Tall Ramping-fumitory) (Mwg-y-ddaeear Grymus). Holt, SJ408 541, Denbs Group (D. Williams), 2nd Jan 2022.
- +036/2.1. *Parietaria judaica* (Pellitory-of-the-wall) (Paladr y Wal). Holt, SJ408 541, Denbs Group (D. Williams), 2nd Jan 2022.
- +‡040/2.2. *Alnus incana* (Grey Alder) (Gwernen Lwyd). Waenreef, SJ4855 4164, Denbs Group (D. Williams), 10th Jul 2022, planted around pond.
- +043/3.06. *Atriplex littoralis* (Grass-leaved Orache) (Llygwyn Arfor). Holt West, SJ388 551, D. Williams, G. Lowden & J. Palmer, det. D. Williams, 10th Sep 2022, roadside.
- +045/3.1.d. *Montia fontana* subsp. *chondrosperma*. Pentre Isaf West, SH863 681, T. Cumberlidge, det. D. Williams, 3rd May 2022, west of Llangernyw fuits confirm.
- +046/05.3. *Stellaria pallida* (Lesser Chickweed) (Gwlyddyn-y-dom Bach). Bryniau, SH7940 7408, D. Williams, 18th Mar 2022, centre of track to Bryn Trallwyn. In flower and abundant, spreading along the track.
- +046/07.08. *Cerastium glomeratum* (Sticky Mouse-ear) (Clust-y-llygoden Lydanddail). Fairy Glen, SH799 545, Denbs Group (D. Williams), 15th May 2022, woodland track.
- +046/10.7.b. *Sagina filicaulis*. Capel Garmon, SH8082 5595, Denbs Group (D. Williams), 7th Aug 2022, boggy area to E of path.

- +046/17.3. *Spergularia marina* (Lesser Sea-spurrey) (Troellig Arfor Bach). Ty'n Dwr Farm, SJ234 415, Denbs Group (D. Williams), 24th Jul 2022, lane.
- +046/22.1. *Saponaria officinalis* (Soapwort) (Sebonllys). Ty-nant, SJ174 237, C. Backshall, 28th Aug 2022; (+) Tanyfron, SJ295 525, Denbs Group (D. Williams), 25th Sep 2022, roadside. verge seeded by Council. A few small plants.
- +051/1.04. *Hypericum hircinum* (Stinking Tutsan) (Dail-y-Beiblau Drewllyd). Tir Llwyd Ind Estate, SH986 788, Denbs Group (D. Williams), 6th Feb 2022, wet areas and wasteland. Single plant on bank.
- +052/1.2. *Tilia cordata* (Small-leaved Lime) (Pisgwydden Dail Bach). Holt West, SJ388 549, D. Williams, G. Lowden & J. Palmer, det. D. Williams, 11th Sep 2022, roadside; (+) Holt West, SJ388 551, D. Williams, G. Lowden & J. Palmer, det. D. Williams, 10th Sep 2022, roadside.
- +053/1.7. *Malva neglecta* (Dwarf Mallow) (Corhocysen). Gwern Tyno Farm East, SH851 778, T. Cumberlidge, 8th Sep 2022, two plants with one in flower on the road side verge; (+) Llysfaen, SH889 773, T. Cumberlidge, 29th Aug 2022, 2no plants found in flower in front of a stone wall by path.
- +057/1.01. *Viola odorata* var. *imberbis* (Sweet Violet) (Fioled Bêr). Brookfield Drive Biodiversity Site, SH828 799, T. Cumberlidge, 30th Mar 2022, 40+ plants in flower on the edge of the woodland path, no hairs found towards inner end lateral petal. Bryn Euryn NR; (+) Llysfaen, SH883 775, T. Cumberlidge, 26th Mar 2022, 40 + plants in a small wooded area, Ty Mawr.
- +057/1.11×12×alt. *Viola lutea* × *V. tricolor* × *V. altaica* = *V. ×wittrockiana* (Garden Pansy) (Trilliw'r Gerddi). Holt, SJ408 541, Denbs Group (D. Williams), 2nd Jan 2022.
- +057/1.12. *Viola tricolor* (Wild Pansy) (Trilliw). Halton, SJ3060 3821, T. Knight, 27th Aug 2022, frequent in arable field.
- +062/22.2. *Erophila verna* (Common Whitlowgrass) (Llysiau'r-bystwn Cynnar). Bryniau, SH7939 7402, D. Williams, 18th Mar 2022, on track to Trallwyn; (+) Bryniau, SH7940 7408, D. Williams, 18th Mar 2022, centre of track to Bryn Trallwyn.
- \*062/23.3.a. *Cochlearia officinalis* subsp. *officinalis*. Bryn Trallwyn, SH789 738, T. Cumberlidge, det. Tim Rich, 15th Mar 2022, 50 + plants found on ground just above high tide line; (\*) Bryn Trallwyn, SH7926 7352, D. Williams, 18th Mar 2022, more than several plants scattered on the shore just above HWM.
- \*062/24.1. *Camelina sativa* (Gold-of-pleasure) (Cydlin). Holt West, SJ389 548, D. Williams, G. Lowden & J. Palmer, det. D. Williams, 10th Sep 2022, field planted with chicory. A few plants with mature seed-heads.
- +062/30.3. *Lepidium heterophyllum* (Smith's Pepperwort) (Pupurlys Amryddail). Graianrhyd, SJ202 566, Denbs Group (D. Williams), 30th Jul 2022, limestone grassland SSSI. Route to W of stone wall running S to N.
- +062/42.1.a. *Raphanus raphanistrum* subsp. *raphanistrum* (Wild Radish) (Rhuddygl Gwylt). Tanyfron, SJ295 525, Denbs Group (D. Williams), 25th Sep 2022, roadside.
- +069/3.1. *Cyclamen hederifolium* (Sowbread) (Bara'r Hwch). Tanyfron, SJ293 523, Denbs Group (D. Williams), 25th Sep 2022, path running SW to NE.



- +‡069/4.5. *Lysimachia punctata* (Dotted Loosestrife) (Trewyn Brych). Fairy Glen, SH799 545, Denbs Group (D. Williams), 15th May 2022, woodland track. Large clump opposite house. Garden escape?
- +‡074/07.1. *Tolmiea menziesii* (Pick-a-back-plant) (Crydlys). Penrhyddion, SH816 536, Denbs Group (D. Williams), 14th Aug 2022, woodland path.
- +075/09.14×15. *Potentilla* ×*mixta* (*P. erecta* × *P. reptans* & *P. anglica* × *P. reptans*) (Hybrid Cinquefoil) (Pumnaalen Groesryw). Fairy Glen, SH799 545, Denbs Group (D. Williams), det. D. Williams, 15th May 2022, woodland track.
- +‡075/17.3.b. *Poterium sanguisorba* subsp. *balearicum* (Fodder Burnet) (Bwrned Ebran). Tanyfron, SJ295 525, Denbs Group (D. Williams), 25th Sep 2022, roadside running SE to NW. Council seeded verge; (+) Holt West, SJ385 552, D. Williams, G. Lowden & J. Palmer, det. D. Williams, 10th Sep 2022, a few plants on laneside verge, a few more in nearby fields.
- +075/20.2. *Aphanes australis* (Slender Parsley-piert) (Troed-y-dryw Main). Gwynfryn, SJ248 520, A.N. Graham & J. Graham, 1st Jun 2022, minera Quarry.
- +075/21.12×13. *Rosa canina* × *R. caesia* = *R. ×dumalis*. Tanyfron, SJ293 523, Denbs Group (D. Williams), 25th Sep 2022, path running SW to NE. Intermediate characters between *R. canina* and *R. caesia*.
- +075/21.12×14. *Rosa corymbifera*. Graianrhyd, SJ200 562, Denbs Group (D. Williams), det. D. Williams, 19th Jun 2022, limestone grassland; (+) Sydallt West, SJ303 552, Denbs Group (D. Williams), 6th Nov 2022, path through field and woodland; (+) Holt West, SJ389 548, D. Williams, G. Lowden & J. Palmer, det. D. Williams, 10th Sep 2022, roadside.
- +‡075/22.05.a. *Prunus domestica* subsp. *domestica* (Coeden Eirin). Hendre-Aled, SH92 62, Denbs Group (D. Williams), 18th Sep 2022, lanesides.
- +‡075/22.05.b. *Prunus domestica* subsp. *insititia* (a subspecies of Wild Plum) (Coeden Eirin Bwlas). Waenreef, SJ4864 4152, Denbs Group (D. Williams), 10th Jul 2022, path.
- +075/22.11. *Prunus padus* (Bird Cherry) (Coeden Geirios yr Adar). Sydallt West, SJ308 551, Denbs Group (D. Williams), 6th Nov 2022, lane; (+) Singret, SJ349 553, Denbs Group (D. Williams), 10th Apr 2022, shaded lane.
- +‡075/26.3.agg. *Pyrus communis* agg.. Graianrhyd, SJ2024 5602, Denbs Group (D. Williams), 30th Jul 2022, roadside. A few trees on N side of road bearing fruit.
- +075/27.1. *Malus sylvestris* (Crab Apple) (Coeden Afalau Surion). MynyddCaedig, SH79 69, F.J. Roberts & M.I. Roberts, 30th Apr 2022.
- +‡075/32.16. *Cotoneaster integrifolius* (Entire-leaved Cotoneaster) (Cotoneaster Cyfanddail). Llay Industrial Estate East, SJ33 56, J.D. Shanklin, 19th Apr 2022.
- +‡075/32.33. *Cotoneaster simonsii* (Himalayan Cotoneaster) (Cotoneaster Simons). Rhyd-y-Creauau, SH80 57, Denbs Group (D. Williams), 24th Apr 2022, woodland path Coed Hafod. Single bush at side of path.
- +‡077/08.2.sat. *Lotus corniculatus* var. *sativus*. Holt West, SJ389 548, D. Williams, G. Lowden & J. Palmer, det. D. Williams, 11th Sep 2022, planted field.
- +077/10.3. *Ornithopus perpusillus* (Bird's-foot) (Troed yr Aderyn). Mynydd y Gaer, SJ97449 71395, T. Knight, 12th Mar 2022, occasional on edge of road verge.

- +©077/14.fab. *Vicia faba* (Broad Bean) (Ffeuen y Gerddi). Redwither Lane, SJ366 496, Denbs Group (D. Williams), 13th Nov 2022, track. Many plants along the verge and in adjacent crops.
- +077/18.5‡ *Medicago arabica* (Spotted Medick) (Maglys Brith). Holt, SJ408 541, Denbs Group (D. Williams), 2nd Jan 2022.
- +‡077/24.1. *Spartium junceum* (Spanish Broom) (Banhadlen Sbaen). Tir Llwyd Ind Estate, SH9899 7899, Denbs Group (D. Williams), 6th Feb 2022, single large bush on E side of amenity road. Planted?
- +082/1.2. *Daphne laureola* (Spurge-laurel) (Clust yr Ewig). Rhyd-y-Creuwau, SH80 57, Denbs Group (D. Williams), 24th Apr 2022, e side of A470 in verge opposite field centre. Gardens nearby.
- \*‡091/2.17. *Euphorbia characias* (Mediterranean Spurge) (Llaethlys Môr y Canoldir). Mochdre, SH8232 7836, T. Cumberlidge, 8th May 2022, waste ground at Mochdre Business Park. Photo confirms.
- \*‡103/1.09.str. *Geranium sanguineum* var. *striatum*. Tanyfron, SJ295 525, Denbs Group (D. Williams), 25th Sep 2022, roadside . a straggling plant by building site.
- +‡103/1.15. *Geranium pusillum* (Small-flowered Crane's-bill) (Pig-yr-aran Fân-flodeuog). Conwy RSPB Reserve, SH7973 7732, D. Williams, 27th May 2022; (+) Tanyfron, SJ292 521, Denbs Group (D. Williams), 25th Sep 2022, lane and woodland.
- +‡103/2.3. *Erodium cicutarium* (Common Stork's-bill) (Pig-y-crëyr). Holt, SJ408 541, Denbs Group (D. Williams), 2nd Jan 2022.
- +‡107/21.1. *Foeniculum vulgare* (Fennel) (Ffenigl). Clwt-grugoer, SH961 633, Denbs Group (D. Williams), 2nd Oct 2022, laneside. Large clump by house.
- +‡107/29.1.‡ *Petroselinum crispum* (Garden Parsley) (Persli). Holt West, SJ389 548, D. Williams, G. Lowden & J. Palmer, det. D. Williams, 11th Sep 2022, planted field.
- +‡109/1.1. *Vinca minor* (Lesser Periwinkle) (Perfagl Fach). MynyddCaedig, SH79 69, F.J. Roberts & M.I. Roberts, 30th Apr 2022.
- +‡110/8.1. *Solanum nigrum* (Black Nightshade) (Codwarth Du). Tanyfron, SJ295 525, Denbs Group (D. Williams), 25th Sep 2022, roadside running SE to NW. Council seeded verge.
- +‡111/3.2.a. *Calystegia sepium* subsp. *sepium*. Fenn's Moss NNR, SJ47 35, BSBI Field Meeting, 12th Aug 2022, llangollen Canal. Flowering.
- +‡111/3.2×4. *Calystegia ×lucana* (*C. sepium* × *C. silvatica*). Pant-du, SJ20 59, J.D. Shanklin, 13th Aug 2022, flowering.
- +‡115/1.1. *Phacelia tanacetifolia* (Phacelia) (Ffaselia). Tanyfron, SJ295 525, Denbs Group (D. Williams), 25th Sep 2022, roadside running SE to NW. Council seeded verge; (+) Redwither Lane, SJ366 496, Denbs Group (D. Williams), 13th Nov 2022, lane.
- +‡116/09.1.© *Borago officinalis* (Borage) (Tafod yr Ych). Tanyfron, SJ295 525, Denbs Group (D. Williams), 25th Sep 2022, roadside running SE to NW. Council seeded verge.
- +‡121/1.3.a. *Plantago major* subsp. *major*. Bryn-yr-orsedd, SJ19 59, J.D. Shanklin, 13th Aug 2022, bryn Alyn; (+) Fenn's Moss NNR, SJ47 35, BSBI Field Meeting, 12th Aug 2022; (+) Fenn's Moss NNR, SJ47 36, BSBI Field Meeting, 12th Aug 2022.

- +‡123/JAS.nud. *Jasminum nudiflorum* (Winter Jasmine) (Jasmin y Gaeaf). Holt, SJ408 541, Denbs Group (D. Williams), 2nd Jan 2022.
- +‡124/16.19. *Veronica agrestis* (Green Field-speedwell) (Rhwyddlwyn-y-maes Gwyrdd). Holt, SJ408 541, Denbs Group (D. Williams), 2nd Jan 2022.
- +‡124/16.24. *Veronica hederifolia* (Ivy-leaved Speedwell) (Rhwyddlwyn Dail Eiddew). Holt, SJ408 541, Denbs Group (D. Williams), 2nd Jan 2022.
- +124/20.05. *Euphrasia arctica* (Arctic Eyebright) (Effros yr Arctig). Bryn-yr-orsedd, SJ19 59, J.D. Shanklin, 13th Aug 2022.
- +‡127/1.1. *Acanthus mollis* (Bear's-breech) (Troed yr Arth). Hen Wrych Farm, SH9370 7833, T. Cumberlidge, 15th Jan 2022, dead flower spikes, near railway line; (+) coed abergele, SH953 762, T. Cumberlidge, 9th Jan 2022, side of path, just leaves; (+) Llay Industrial Estate East, SJ3344 5653, J.D. Shanklin, 19th Apr 2022, in hedge on west side of Chapel Lane.
- +‡131/6.5. *Lonicera henryi* (Henry's Honeysuckle) (Gwyddfifd Henry). Llay Industrial Estate East, SJ3318 5608, J.D. Shanklin, 19th Apr 2022, plants on bank of steep ravine by footpath.
- +‡133/1.2. *Valerianella carinata* (Keeled-fruited Cornsalad) (Gwylaeth-yr-oen Ffrwythau Rhychog). New Brighton, SJ2747 5027, Denbs Group (D. Williams), 22nd May 2022, lane. Frequent in gravel along house garden wall.
- +135/03.2a. *Arctium minus* subsp. *pubens* ([Wayside Burdock]) (Cyngaf Min y Ffordd). Fenn's Moss NNR, SJ47 35, BSBI Field Meeting, 12th Aug 2022.
- +135/22.2.‡ *Lactuca virosa* (Great Lettuce) (Letusen Chwerw). Tanyfron, SJ295 525, Denbs Group (D. Williams), 25th Sep 2022, roadside running SE to NW.
- +135/28.01.1. *Hieracium sabaudum* (Autumn Hawkweed) (Heboglys Blewog). Hendre-Aled, SH923 628, Denbs Group (D. Williams), 18th Sep 2022, roadside; (+) Clwt-grugoer, SH965 635, Denbs Group (D. Williams), 2nd Oct 2022, track to Wenallt Uchaf; (+) Tanyfron, SJ292 521, Denbs Group (D. Williams), 25th Sep 2022, lane and woodland.
- +‡135/74.1.© *Ambrosia artemisiifolia* (Ragweed) (Bratlys). Froncysyllte, SJ2665 4100, T. Knight, det. D. Williams, 14th Sep 2022, 2 plants beneath bird-feeder in garden. Assumed 'bird seed alien'.
- +‡135/80.2. *Galinsoga quadriradiata* (Shaggy-soldier) (Galinsoga Blewog). Tanyfron, SJ295 525, Denbs Group (D. Williams), 25th Sep 2022, roadside. verge seeded by Council. A few small plants.
- +‡147/5.2. *Arum italicum* (Italian Lords-and-Ladies) (Pidyn-y-gog Eidalaid). Holt, SJ408 541, Denbs Group (D. Williams), 2nd Jan 2022.
- +‡147/5.2.b. *Arum italicum* subsp. *italicum*. Pwll-glas, SJ1172 5464, Denbs Group (D. Williams), 22nd Feb 2022, road verge, east side. Several clumps below the road.
- +‡148/2.4.© *Lemna minuta* (Least Duckweed) (Llinad Bach). Tir Llwyd Ind Estate, SH989 789, Denbs Group (D. Williams), 6th Feb 2022, wasteland.
- +‡152/11.2. *Cyperus eragrostis* (Pale Galingale) (Ysnoden-Fair Welw). Waenreef, SJ4873 4152, Denbs Group (D. Williams), 10th Jul 2022, waste area around house. Spreading.
- +153/12.08. *Festuca ovina* (Sheep's-fescue) (Peiswellt y Defaid). Fairy Glen, SH79 54, Denbs Group (D. Williams), 15th May 2022.

- +‡153/13.2. *Lolium multiflorum* (Italian Rye-grass) (Rhygwelld yr Eidal). Gwynfryn, SJ247 522, A.N. Graham & J. Graham, 2nd Jul 2022, ty Hir Farm, dung heap; (+) New Brighton, SJ2765 5027, Denbs Group (D. Williams), 22nd May 2022, lane. Waste area by farm buildings.
- +‡153/14.3. *Vulpia myuros* (Rat's-tail Fescue) (Peisgwelld y Fagwyr). Capel Garmon, SH8072 5571, Denbs Group (D. Williams), 7th Aug 2022, lane; (+) Waenreef, SJ4873 4152, Denbs Group (D. Williams), 10th Jul 2022, waste area around house.
- +153/24.3. *Glyceria declinata* (Small Sweet-grass) (Melyswelld Llwydilas). Fairy Glen, SH79 54, Denbs Group (D. Williams), 15th May 2022, woodland track.
- +©153/27.1.b. *Arrhenatherum elatius* var. *bulbosum* (Onion Couch). Clwt-grugoer, SH965 630, Denbs Group (D. Williams), 2nd Oct 2022, roadside A544.
- +153/40.1. *Calamagrostis epigejos* (Wood Small-reed) (Corsen Fach y Coed). Pant-du, SJ2032 5969, J.D. Shanklin, 13th Aug 2022, 1m patch on quarry hard standing.
- +153/47.2. *Alopecurus geniculatus* (Marsh Foxtail) (Cynffonwelld Elinog). Fairy Glen, SH79 54, Denbs Group (D. Williams), 15th May 2022, woodland track.
- +158/14.1×2.‡ *Polygonatum ×hybridum* (*P. multiflorum* × *P. odoratum*) (Garden Solomon's-seal) (Llysiaw-Solomon yr Ardd). MynyddCauedig, SH79 69, F.J. Roberts & M.I. Roberts, 30th Apr 2022, likely planted, roadside.
- \*158/18.umb.umb. *Ornithogalum umbellatum* subsp. *umbellatum*. New Brighton, SJ2724 5035, Denbs Group (D. Williams), 22nd May 2022, bare patches around Brookfield Farm. A few plants in grass beyond garden.
- +159/05.03. *Iris pseudacorus* (Yellow Iris) (Gellesgen). Fairy Glen, SH799 545, Denbs Group (D. Williams), 15th May 2022, woodland track; (+) MynyddCauedig, SH79 69, F.J. Roberts & M.I. Roberts, 30th Apr 2022.
- +159/05.08. *Iris foetidissima* (Stinking Iris) (Gellesgen Ddrewillyd). New Brighton, SJ275 502, Denbs Group (D. Williams), 22nd May 2022, lane.
- +162/18.1×4. *Dactylorhiza fuchsii* × *D. praetermissa* = *D. ×grandis*. Hen Wrych Farm, SH937 782, T. Cumberlidge, det. Ian Denholm, 3rd Jul 2022, 10+ plants found in a fenced off area, both *D.praetermissa* and *D.fuchsii* present.
- +©20A/CRY.jap. *Cryptomeria japonica* (Japanese Red-cedar) (Cochwydden Japan). Bryn Trallwyn, SH792 735, D. Williams, 18th Mar 2022, a few small trees above and along the shoreline; (+) Cefn Berain West, SH9835 6942, N.J. Osley & S.K. Osley, 9th Oct 2022, a few small trees planted in the NW field corner of the crossroads under a canopy of broadleaved and conifer trees. Cones present. Possibly cultivar 'Cristata'? Photo confirms

FLINT, v.c.51 (comm. Ms Gail Quartly-Bishop). No records to report for 2022.

ANGLESEY, v.c.52 (comm. N.H. Brown & I.R. Bonner)

+017/3.03b. *Dryopteris affinis* subsp. *cambrensis*. Caer-glaw, SH375 765, Ian Bonner & Nigel Brown, 12th Jun 2022, wet grassland.

- +‡020/7.mug.© *Pinus mugo* (Dwarf Mountain-pine) (Pinwydden y Mynydd). Newborough Forest SSSI, SH397 646, Nigel Brown, 9th May 2022, small stand of mature trees planted on rocky outcrop.
- +028/12.1. *Clematis vitalba* (Traveller's-joy) (Barf yr Hen Ŵr). Newborough Forest SSSI, SH389 655, Nigel Brown, 30th Aug 2022, one large plant in fixed dune grassland.
- +028/13.22. *Ranunculus trichophyllus* (Thread-leaved Water-crowfoot) (Crafanc-y-frân Feinddail). Cors Bodeilio NNR, SH50 77, Ian Bonner, 11th Jun 2022, bSBI visit.
- +‡030/1.4. *Papaver rhoeas* (Common Poppy) (Pabi Coch). Aberffraw, SH3566 6918, Nigel Brown, 28th Jun 2022, yard of former mill.
- +‡043/1.08. *Chenopodium polyspermum* (Many-seeded Goosefoot) (Troed-yr-ŵydd Amlhadog). Menai Bridge, SH557 717, Hugh Knott, 4th Aug 2022, under garden bird feeder.
- +043/3.02×06. *Atriplex ×hulmeana*. N. of Rhosneigr, SH3207 7407, Jane & Ivor Rees, 21st Jul 2022, Crugyll estuary: (+) Lleiniog, SH6203 7900, Jane & Ivor Rees, 20th Jun 2022, noted in 2 monads.
- 048/1.02. *Limonium humile* (Lax-flowered Sea-lavender) (Lafant-y-môr Blodau Llac). Menai Strait Shore SSSI, SH5579 7243, Jane & Ivor Rees, 16th Sep 2022, single clump, nr. Nelson statue, currently the, most easterly record in Menai Strait.
- \*‡062/29.umb. *Iberis umbellata* (Garden Candytuft) (Beryn yr Ardd). Red Wharf Bay (Llanddona Beach), SH57 80, Anglesey Flora Group, 27th Sep 2022, along roadside near small riding stable.
- \*‡069/3.2. *Cyclamen coum* (Eastern Sowbread) (Bara'r-hwch y Gaeaf). Nant y Scrwngi, Cemaes, SH37 93, Nigel Brown, 22nd Feb 2022, several small colonies, by footbridge, planted but persisting. 1st VCR.
- +069/4.3. *Lysimachia vulgaris* (Yellow Loosestrife) (Trewyn). Breakwater Quarry Country Park, SH227 834, Nigel Brown, 25th Aug 2022, quite a bit on bank of one of the quarry pools.
- \*‡074/05.are. *Saxifraga ×arendsii* (Garden Mossy-saxifrage). former Octel & Shell Terminal, Amlwch Port, SH448 935, John Dyda, May 2022, naturalised in derelict industrial ground.
- +‡074/08.1. *Tellima grandiflora* (Fringecups) (Clychau'r Clawdd). Hen-hafod, Talwrn, SH496 771, Nigel & Caroline Brown, 8th May 2022, small patch in shady spot near cottage.
- +‡075/21.01. *Rosa multiflora* (Many-flowered Rose) (Rhosyn Amlflodeuog). Bodrwyn, SH41 73, Ian Bonner & Nigel Brown, 13th Jun 2022, 1-2 bushes scrambling up tall hedge.
- +‡075/22.03. *Prunus cerasifera* (Cherry Plum) (Coeden Goeg-geirios). Nant y Scrwngi, Cemaes, SH37 93, Nigel Brown, 22nd Feb 2022, mature flowering plant at edge of scrub, planted by Pauline Roberts.
- +‡075/32.13. *Cotoneaster lacteus* (Late Cotoneaster) (Cotoneaster Diweddar). Breakwater Country Park, SH2280 8330, Nigel & Caroline Brown, 4th Nov 2022, probably planted, now well established along scrub/field boundary.
- +‡077/17.1. *Melilotus altissimus* (Tall Melilot) (Yr Wydro Dal). Point Lynas (west), SH479 930, Dr R. Arnold, Sep 2022, in fruit, determined from seed pods.



- +079/2.1. *Myriophyllum verticillatum* (Whorled Water-milfoil) (Myrdd-ddail Troellennog). Afon Crigyll ( Valley Wetlands RSPB), SH3382 7680, Nigel Brown, 27th Jul 2022, with *Lemna trisulca* & *Utricularia australis*.
- +090/1.1.‡ *Buxus sempervirens* (Box) (Pren Bocs). Breakwater Country Park, SH2301 8345, Nigel & Caroline Brown, 4th Nov 2022, small bush in damp meadow, probably planted?
- +‡091/2.09. *Euphorbia lathyris* (Caper Spurge) (Llaethlys Caprys). Red Wharf Bay (Llanddona Beach), SH57 80, Anglesey Flora Group, 27th Sep 2022, along roadside near small riding stable.
- +‡102/1.03. *Oxalis corniculata* (Procumbent Yellow-sorrel) (Suran Orweddol). Paradwys, SH43 71, Jane Stevens, 20th Jul 2022, dumped material, disturbed ground.
- +‡102/1.04. *Oxalis exilis* (Least Yellow-sorrel) (Suran Felen Fach). Llanfair, SH448 668, J & I Rees & James Robertson, 30th Apr 2022, churchyard of Llanfair yn y Cwmwd.
- +‡107/21.1. *Foeniculum vulgare* (Fennel) (Ffenigl). Grugmor, SH30 88, Jane & Ivor Rees, 9th Aug 2022, on edge of tack from Porth Crugmor.
- +‡107/25.1. *Conium maculatum* (Hemlock) (Cegiden). Moelfre, SH5165 8667, Jane & Ivor Rees, 25th May 2022, by coast path.
- \*109/1.3.oxy. *Vinca major* var. *oxyloba*. Bodrwyn, SH41 73, Ian Bonner & Nigel Brown, 13th Jun 2022, roadside, spreading from garden.
- +110/2.1. *Lycium barbarum* (Duke of Argyll's Teaplant) (Ysbeinwydden Hardd). Soldiers Point, SH2360 8370, Nigel & Caroline Brown, 4th Nov 2022, medium sized bush in rough ground at landward end of the breakwater.
- \*‡116/02.4. *Echium pininana* (Giant Viper's-bugloss) (Gwiberlys Mawr). Menai Bridge central, SH55 72, Jane & Ivor Rees, 21st May 2022, 2 flower spikes, c. 3-4m.tall, by footpath, end of Mount Street.
- +‡116/09.1. *Borago officinalis* (Borage) (Tafod yr Ych). Llanddyfnan, SH483 785, Nigel Brown, 12th May 2022, single plant in nearby field, wild sown.
- +‡116/12.2.© *Amsinckia micrantha* (Common Fiddleneck) (Amsincia). Penmon & Caim, SH6227 8058, John Harold, Sep 2022, 1 plant, bare ground on road verge, several seedlings nearby.
- \*118/04.1.b. *Lamium galeobdolon* subsp. *montanum*. Pentraeth, SH5298 7875, Charles Aron, conf. Nigel Brown, 15th May 2022, 20-30 plants on a bank below Rhiwlas. 1<sup>st</sup> VC Record.
- +‡124/13.3. *Linaria purpurea* (Purple Toadflax) (Llin-y-llyffant Porffor). Aberffraw, SH3566 6918, Nigel Brown, 28th Jun 2022, yard of former mill.
- +124/20.07. *Euphrasia nemorosa* (Effros). Newborough Forest SSSI, SH3981 6517, Nigel Brown, 3rd Aug 2022.
- +133/1.1. *Valerianella locusta* (Common Cornsalad) (Gwylaeth yr Oen). Malltraeth Marsh SSSI(part), SH4649 7367, Nigel Brown, 13th May 2022, old railway bridge.
- +‡135/62.03. *Senecio inaequidens* (Narrow-leaved Ragwort) (Creulys Gulddail). Llangefni, SH466 762, Charles Aron, Jul 2022, at least 6 plants on a building site/waste ground.

- +‡147/4.1. *Zantedeschia aethiopica* (Altar-lily) (Lili'r Pasg). Nant y Scrwngi, Cemaes, SH37 93, Nigel Brown, 22nd Feb 2022, several planted by somewhat redundant pond.
- +‡153/18.05. *Poa pratensis* (Smooth Meadow-grass) (Gweunwelt Llyfn). Cors Bodeilio NNR, SH50 77, Ian Bonner, 11th Jun 2022, BSBI visit.
- +‡153/18.09. *Poa compressa* (Flattened Meadow-grass) (Gweunwelt Cywasgedig). Beaumaris (North), SH60 76, R. Birch, 7th May 2022, wall around Beaumaris surgery.
- +‡158/12.2. *Lilium pyrenaicum* (Pyrenean Lily) (Lili Ddrewllyd). Point Lynas (east), SH480 934, Nigel Brown, 24th Aug 2022, in rank grassland/scrub beyond the immediate confines of the Pilot House.
- +‡158/23.2. *Muscari armeniacum* (Garden Grape-hyacinth) (Clychau Dulas yr Ardd). Llanbadrig churchyard, SH3759 9463, Nigel Brown, 5th Apr 2022, single flowering shoot by perimeter wall.
- +‡158/24.07. *Allium triquetrum* (Three-cornered Garlic) (Garleg Trionglog). Nant y Scrwngi, Cemaes, SH37 93, Nigel Brown, 22nd Feb 2022, well established along main tracks.
- +‡158/33.Tet. *Narcissus 'Tête à Tête'*. Nant y Scrwngi, Cemaes, SH37 93, Nigel Brown, 22nd Feb 2022, widely planted and expanding. 1st VCR.
- +‡159/08.1. *Crocus vernus* (Spring Crocus) (Saffrwm y Gwanwyn). Pont Mynach, SH4544 6644, Sally Ellis, 6th Mar 2022, recorded as *C. neapolitanus*.
- +‡160/1.glo. *Yucca gloriosa* (Spanish-dagger). Llanfihangel yn Nhowyn, SH324 774, Jim Clark, Sep 2022, not obviously planted, in amenity grassland. Rec. by Jim as just *Yucca*.
- +‡162/18.3.b. *Dactylorhiza incarnata* subsp. *coccinea*. Cors Bodeilio NNR, SH50 77, Ian Bonner, 11th Jun 2022, BSBI visit.

Images 6 to 8: See editorial on page 4.

6: Yellow-rattle (*Rhinanthus minor*) herbarium sheet, NMW herbarium.

7: Bee Orchid (*Ophrys apifera*) on the Urban Meadow, Amgueddfa Genedlaethol Caerdydd. © Sally Whyman.

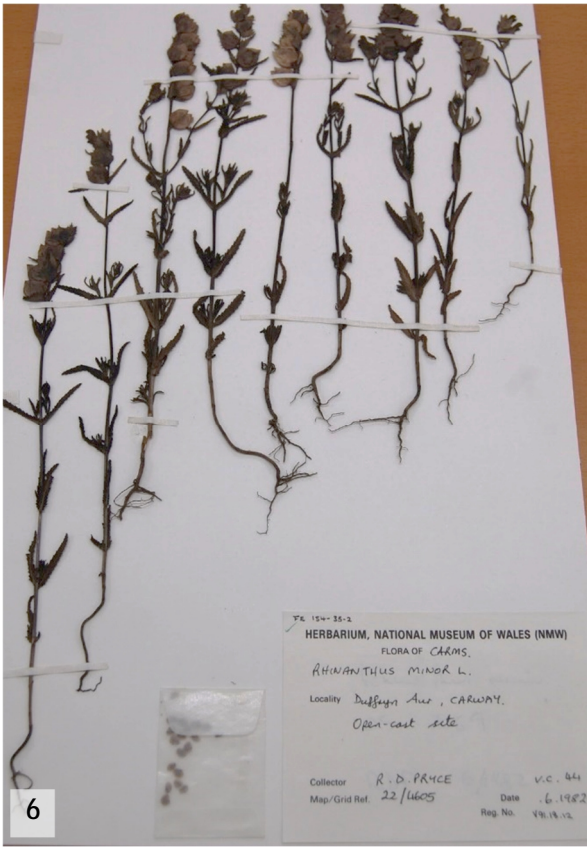
8: Urban Meadow, Amgueddfa Genedlaethol Caerdydd in July. © Sally Whyman.

Images 9-11, see article page 5 on the Wales launch of Atlas 2020. Photos © Barry & Sandra Stewart

9: An Atlas-themed cake and cupcakes expertly made by Pippa Bonner.

10: 50 people attended the event plus others online, including Vice County Recorders, and conservation sector and museum representatives.

11: Hard copies of the Atlas were presented by BSBI's CEO Julia Hanmer (left) for NBGW Director Dr Lucy Sutherland (right) for the NBGW library.







9



10



11

**Botanical Society of Britain & Ireland**

Dwy ganrif o waith cofnodi planhigion dan arweiniad gwirfoddolwyr ledled Prydain ac Iwerddon  
Two centuries of volunteer-led plant recording across Britain and Ireland

**Mentrus**  
Darparu data a dadansoddiadau gwyddonol i helpu i fynd i'r afael â cholli bioamrywiaeth a newid yn yr hinsawdd

**Int:**  
Providing data and scientific analysis to help address biodiversity loss and climate change

Cyllwyno hyfforddwr i ddatblygu cymuned o ffrindiau

Delivering training to develop a diverse

