

DERBYSHIRE FLORA GROUP NEWSLETTER

EDITED: Dr ALAN WILLMOT (BSBI County Recorder)

Number 35 – WINTER 2021/2022

1. EDITORIAL

After a year of no meetings in 2020, we were at least allowed to run a few meetings last year. Hopefully, this year we will be allowed to run the full programme of meetings as detailed in my previous message and repeated here. Nationally things have been rather quiet as the BSBI have been concentrating on preparing the Third National Atlas of plant records. This is still on course for publication later this year in both electronic and paper formats. There has been some activity however particularly around members' access to records and new national recording schemes. Changes in members' access to records via the Distribution Database (DDb) are imminent. Details of any new national recording schemes are likely to have to await the publication of the Third Atlas.

2. NEW COUNTY RECORDS vc57 in 2021

These were all first county records for Derbyshire in 2021 when they were made.

2.1 *Allium carinatum* (Keeled Garlic)

This attractive garden-escape was first seen growing by a stile in Thulston (SK4031) by Marion Bryce in August.

2.2 *Chenopodium berlandieri* (Pitseed Goosefoot)

This grain-alien was found growing on waste ground opposite McDonald's in Barlborough (SK4776) by Mick Lacey in August. It is generally similar in appearance to *Chenopodium album* (Fat-hen) from which it can be told only by close examination of seeds and fruits.

2.3 *Chenopodium bushianum* (Soyabean Goosefoot)

This another crop-alien very similar to Fat-hen was found growing in a Maize field at Langwith (SK5169) by Mick Lacey in September.



Chenopodium bushianum Langwith M Lacey.

2.4 *Dactylorhiza x hallii* (A hybrid orchid)

This native hybrid of Heath Spotted and Southern Marsh was found at Leash Fen (SK2874) in June by Mick Lacey. It was growing with both its parents (See picture over page).



Dactylorhiza x hallii Leash Fen M Lacey.

2.5 *Erythronium dens-canis* (Dog's-tooth-violet)

This garden escape was recorded as growing in Muggington Churchyard (SK2842) by Marion Bryce in March. It was probably planted initially.

2.6 *Parthenocissus inserta* (False Virginia-creeper)

This garden escape was found growing on wasteland at New Mills (SK0085) by David Blowers in July. This species lacks the adhesive discs on the end of its tendrils that true Virginia-creeper has.

2.7 *Taraxacum acutifrons*

This rather uncommon but possibly native species of grasslands and waste places was found on Barlborough Industrial Estate (SK4776) by Mick Lacey in March. It is more frequent in the south west of Britain.

2.8 *Taraxacum amplum*

This introduced species of waste ground and gardens was recorded outside Chesterfield bus station (SK3870) in March by Mick Lacey. It is said to be probably under recorded.



Taraxacum amplum Chesterfield M Lacey.

2.9 *Taraxacum densilobum*

This possibly native species of grasslands and gardens was reported from a pavement at Newbold (SK3773) by Mick Lacey in March.



Taraxacum densilobum Newbold M Lacey.

2.10 *Taraxacum hepaticum*

This nationally rare species of Dandelion from urban areas was recorded in Chesterfield (SK3871) in March by Mick Lacey.

2.11 *Taraxacum nigridentatum*

This British endemic of walls and gardens was noted at Rowsley (SK2566) in March by Mick Lacey. It is generally a species of western areas in the British Isles.

2.12 *Taraxacum nitidum*

Yet another of Mick Lacey's finds from early last year. He reported this nationally scarce species from the grass verge outside the Coop in Newbold (SK3672) in February.

2.13 *Tilia x euchlora* (Caucasian Lime)

Graeme Coles pointed this introduced tree out to members of the group on the meeting to Hardwick (SK4564) in September last year. It is the hybrid of *Tilia cordata* (Small-leaved Lime) with *T. dasystyla* and is of garden origin. Much planted by roads and in parks, it is recognisable by the glossy appearance of the upper sides of its leaves.

3. OTHER NOTABLE RECORDS FROM 2021

These are a mixture of records, some are second county records, some of species that have not been recorded for a while and some are notable for other reasons.

3.1 *Armeria maritima* (Thrift)

This coastal plant was recorded on the roadside at Spitewinter (SK3466) in July by Mick Lacey. This is now our eighth record and I am beginning to wonder if we shall see this become another wayside halophyte like *Cochlearia Danica* (Danish Scurvygrass).

3.2 *Corydalis cava* (Hollowroot)

This garden throwout was reported to David Blowers by Lynne McPeake at Whaley Bridge (SK0181) in March. It is the second county record for the species.

3.3 *Epipactis dunensis* (Dune Helleborine)

This, another second county record, was reported from scrubby woodland in Longdendale in August by Dave Mallon. It was growing with the commoner *Epipactis helleborine* (Broad-leaved Helleborine) and can easily be passed by as a rather poorly grown specimen of the commoner species. The upper leaves are arranged in two ranks like *E. atrorubens* (Dark-red Helleborine).

3.4 *Galium x pomeranicum*

This is the hybrid of *Galium alba* (Hedge Bedstraw) with *Galium verum* (Lady's Bedstraw). Continued over page.



Corydalis cava Whaley Bridge D Blowers.



Epipactis dunensis Longdendale D Mallon.

3.4 *Galium x pomeranicum* contd.

This hybrid had not been recorded locally since 1969 when Mick Lacey reported it from Highwood Lane near Cresswell (SK5176) in July. It was growing on the roadside with its two parents.



Galium x pomeranicum Cresswell M Lacey.

3.5 *Orobanche minor* (Common Broomrape)

This parasitic plant was recorded at two sites last year both in June. Pete Mella recorded it at Meersbrook Sheffield (SK3484) and Chris Buckler reported about 150 stems at Poulter Country Park (SK57F).

3.6 *Salvia verbenaca* (Wild Clary)

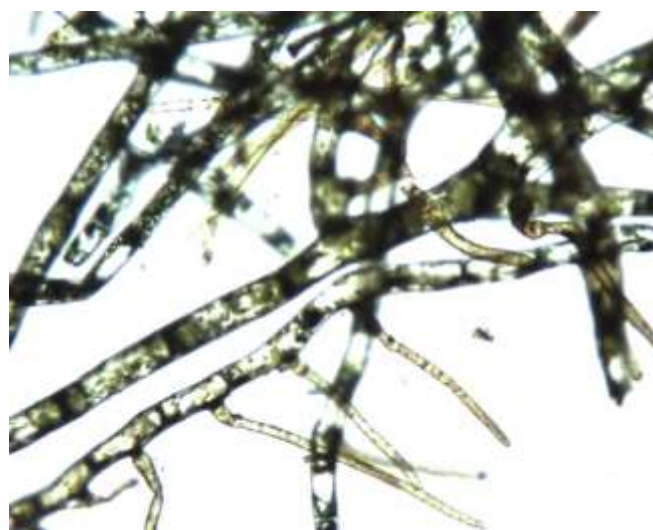
I recorded only the second record for this species in the county on the High Peak Trail near Minninglow (SK1958) in June.



Orobanche minor Poulter CP J Flanagan.

3.7 *Trichomanes speciosum* (Killarney Fern)

Tom Blockeel recorded the gametophyte of this fern growing on the undersurface of a large gritstone boulder in Shining Cliff Wood (SK3352) in July. This life stage looks like a mass of felty threads even to the unaided eye.



Trichomanes speciosum (Photomicrograph) Shining Cliff T Blockeel.

4. OUTDOOR MEETINGS 2022

I have already circulated the list of meetings for 2022 but have repeated them here for anyone who missed the first circulation. Note that all meetings are subject to any covid regulations current at the time and will not proceed if outdoor meetings are banned then.

5. ENQUIRIES

Any enquiries concerning the identification and recording of higher plants in Derbyshire can be directed to me as below. It is always useful to include photographs with any possible new county records or queries if you can.

Dr Alan Willmot
2 Kedleston Close
Allestree Derby DE22 2RA

Tel: 01332 550373 and 0794 121 4977

E-mail: alanwillmot@outlook.com

DERBYSHIRE FLORA GROUP OUTDOOR MEETING PROGRAMME 2022

All meetings are held on Saturdays and start at 10.30 am. They usually end around 4.30 pm. Carry lunch.

		Venue	Meeting Point & Reason	Leader
2	April	Rowsley Sidings area	Car park on Old Station Close see below* Rowsley (SK258659); general riverside woodland flora.	CMS
23	April	Priestcliffe Lees	Miller's Dale Station car park (SK138732); general limestone wood & grassland flora.	PA
7	May	The Avenue Country Park	Car park on Hornbeam Drive off A61 just north of Clay Cross at SK388680; general grassland & waterside vegetation.	AW
28	May	High Tor area	Artist Corner car park Matlock off A6 at SK296594; general limestone woodland and grassland flora.	CMS
18	June	Blackwell Quarry area	Wyedale car park at SK103725 off A6 just west of Topley Pike lay-by; disused quarry for general limestone flora.	AW
9	July	Deep Dale area	White Lodge car park on A6 near Taddington (SK170706); general limestone wood & grassland flora.	PA
23	July	Ringwood Lake	Car park at Ringwood Lake (SK417738) on corner of Chesterfield Rd & Inkersall Green Rd; woodland & pond flora.	KB
20	August	Holmebrook V. Country Park	Car park by café off Water Meadow Lane (SK355730); general waterside & grassland floras.	AW
10	September	Derwent Reservoir area	Upper Derwent (STW) car park at SK172893; general moorland vegetation.	AW

* Entrance to Old Station Close is off A6 diagonally opposite entrance to the Grouse & Claret.

N.B. Some of these meetings start from "Pay & Display" car parks where change is not usually available. Some other car parks are now card only.

Meeting's organiser: Dr Alan Willmot, 2 Kedleston Close, Allestree, Derby, DE22 2RA.

Mobile: 0794 121 4977

Home phone: 01332 550373

Email: alanwillmot@outlook.com

Meeting leaders:

AW: Alan Willmot

PA: Penny Anderson

CMS: Claire & Mary Smith

KB: Ken Balkow

Anyone interested in botany is welcome to come on these meetings but please contact the organiser if you have not attended one of the events before.

A. Willmot 10th Jan 2022 Floravc57/Meetings/Meets2022 Final