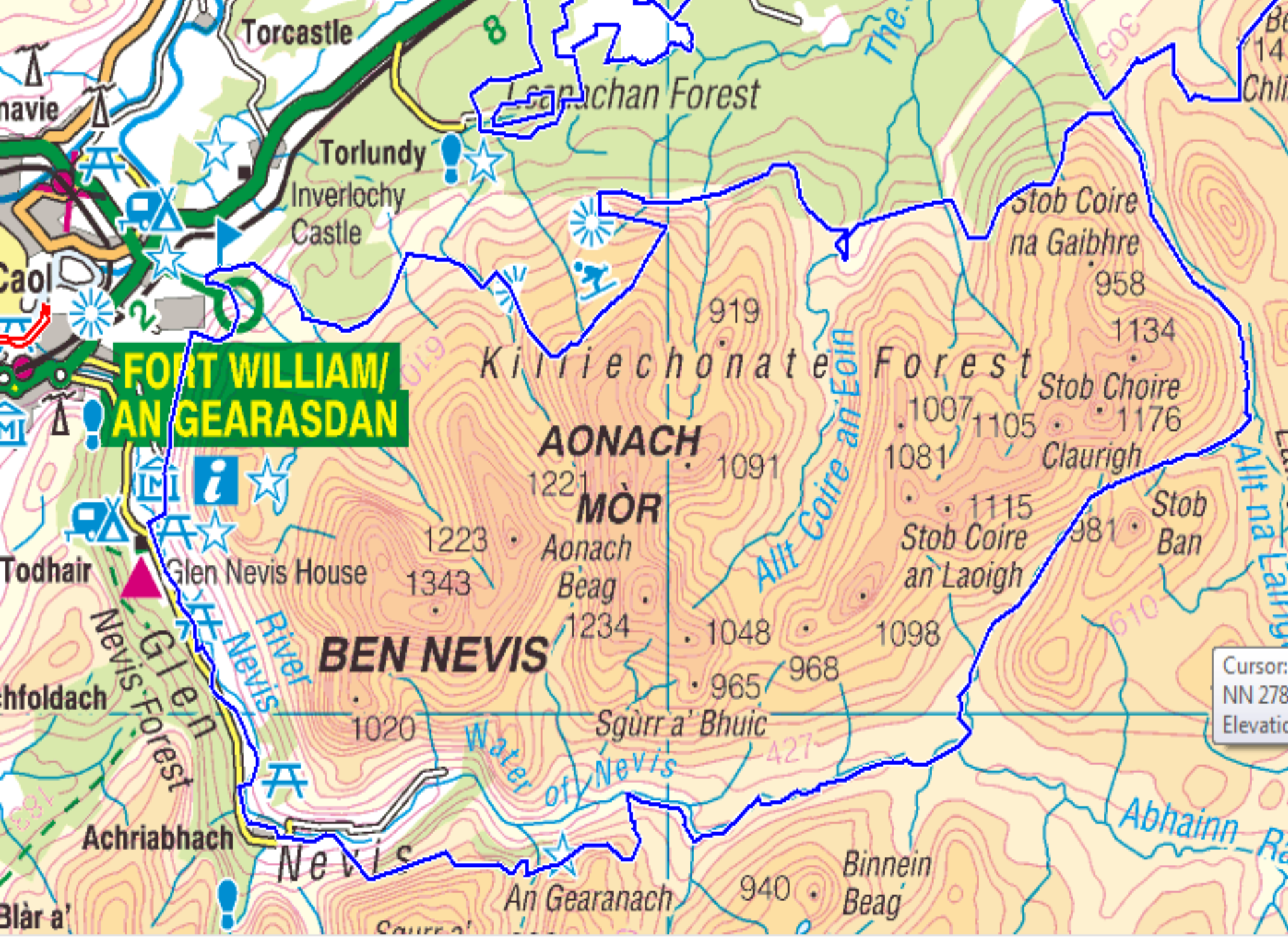


Ben Nevis North Face Survey 2014-16

Ian Strachan



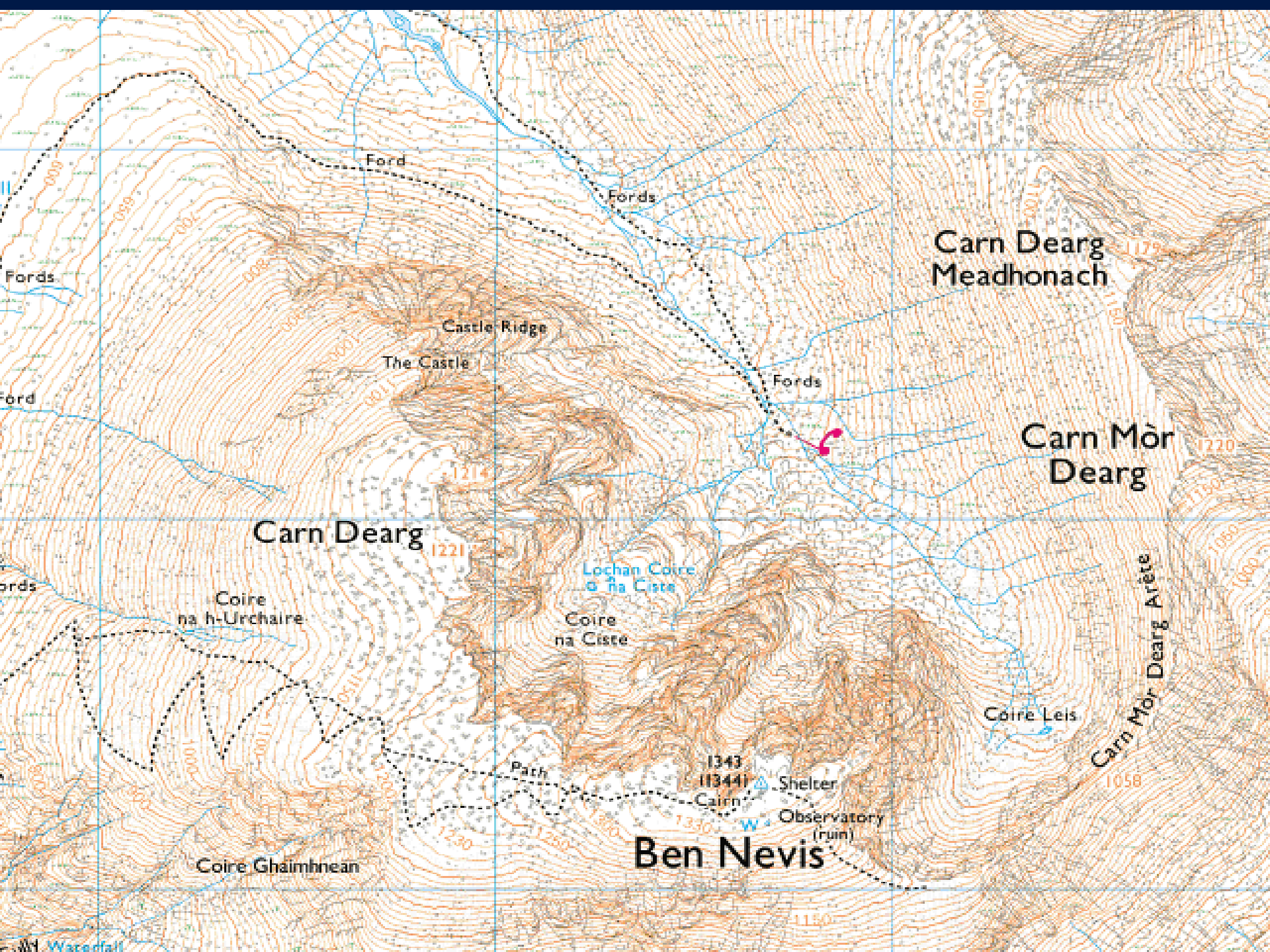


Ben Nevis

Site of Special Scientific Interest

- Geology– Caledonian Igneous Complex
- Upland and Woodland Habitats
- Arctic-Alpines: Flowering Plants and Ferns
- Mosses, Liverworts and Lichens
- Breeding Birds and Insects
- Special Area of Conservation
- Part of the Natura 2000 Network





Carn Dearg
Meadhonach

Carn Mòr
Dearg

Carn Dearg

Ben Nevis

Castle Ridge

The Castle

Coire
na h-Urchair

Coire
na Ciste

Lochan Coire
o' na Ciste

Coire Leis

Coire Ghaimhnean

1343
(1344)
Cairn

Shelter

Observatory
(ruin)

Path

Ford

Fords

Fords

Fords

Ford

Fords

Waterfall



















A Nevis Landscape Partnership Project

- Heritage Lottery Fund
- Scottish Natural Heritage
- The Highland Council
- Mammut
- SMC, LMRT
- Midland Valley Exploration
- Many other supporters









Ben Nevis North Face
13th August 2018
Dangers and Warnings
Ben Nevis North Face
13th August 2018
Dangers and Warnings
Ben Nevis North Face
13th August 2018
Dangers and Warnings


Danger
Men at work

Ben Nevis North Face
13th August 2018
Dangers and Warnings
Ben Nevis North Face
13th August 2018
Dangers and Warnings
Ben Nevis North Face
13th August 2018
Dangers and Warnings

Ben Nevis North Face
13th August 2018
Dangers and Warnings
Ben Nevis North Face
13th August 2018
Dangers and Warnings
Ben Nevis North Face
13th August 2018
Dangers and Warnings

Ben Nevis North Face
13th August 2018
Dangers and Warnings
Ben Nevis North Face
13th August 2018
Dangers and Warnings
Ben Nevis North Face
13th August 2018
Dangers and Warnings


Warning
Beware falling debris



























Nationally Rare (6)

- Drooping Saxifrage *Saxifraga cernua*
- Tufted Saxifrage *Saxifraga cespitosa*
- Highland Saxifrage *Saxifraga rivularis*
- Hare's-foot Sedge *Carex lachenalii*
- Curved Woodrush *Luzula arcuata*
- Wavy Meadow-grass *Poa flexuosa*



Nationally Scarce (10)

- Starwort Mouse-ear *Cerastium cerastoides*
- Arctic Mouse-ear *Cerastium nigrescens*
- Alpine Meadow-grass *Poa alpina*
- Alpine Saxifrage *Saxifraga nivalis*
- Sibbaldia *Sibbaldia procumbens*
- Alpine Speedwell *Veronica alpina*
- Alpine Lady-fern *Athyrium distentifolium*
- Russet Sedge *Carex saxatilis*
- 2 Lady's-mantles: *Alchemilla glomerulans* & *A. wichurae*





































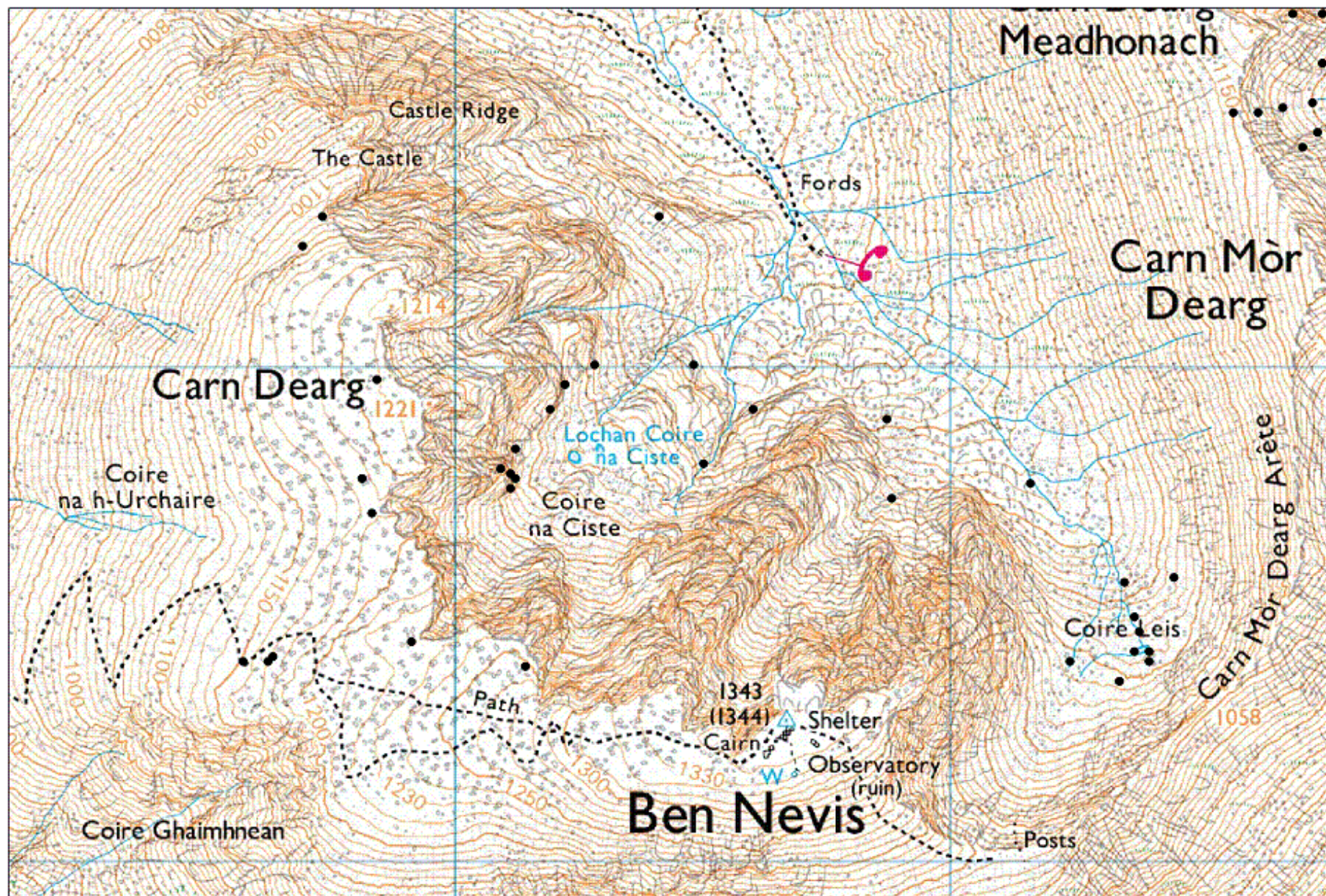


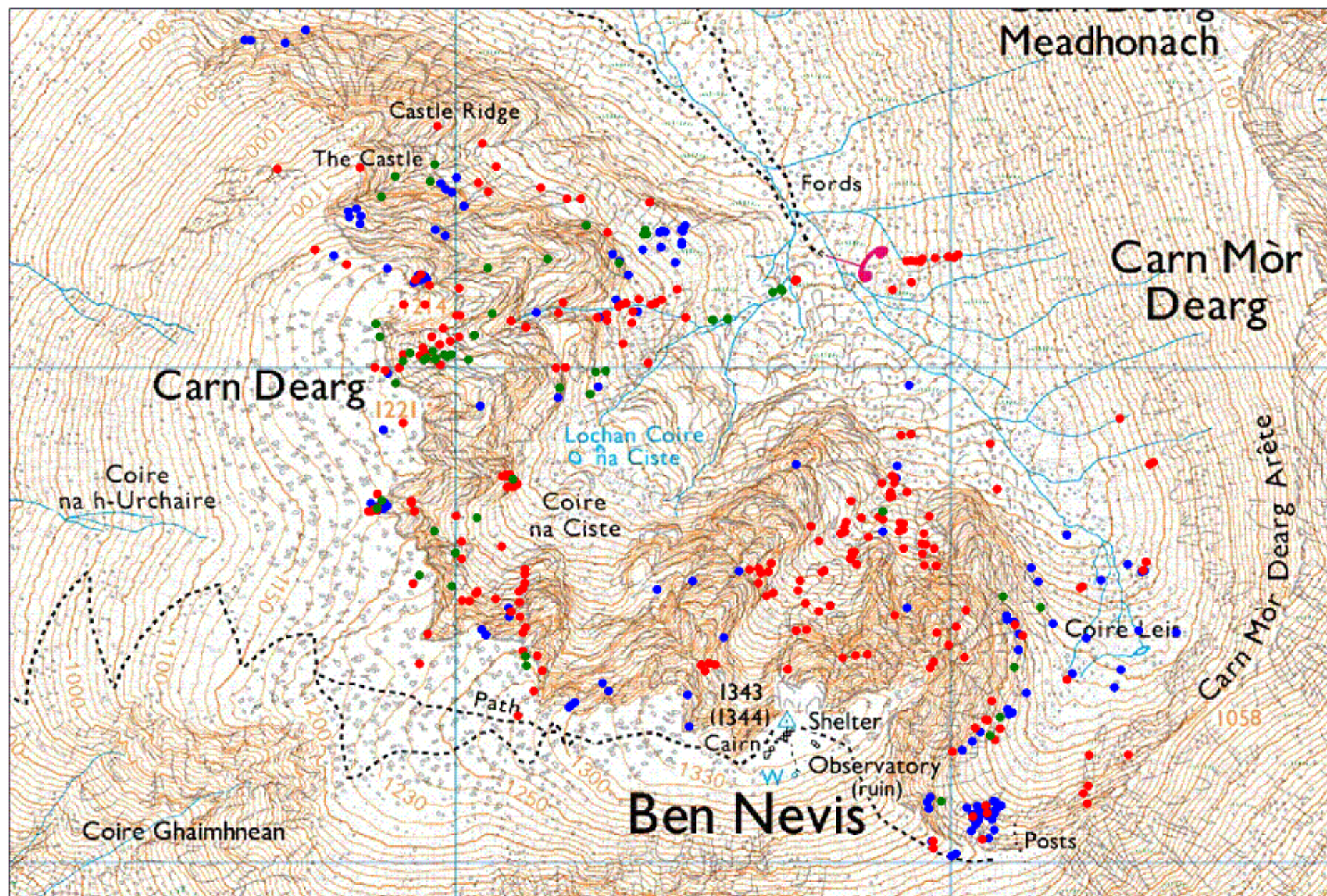












Highlights!

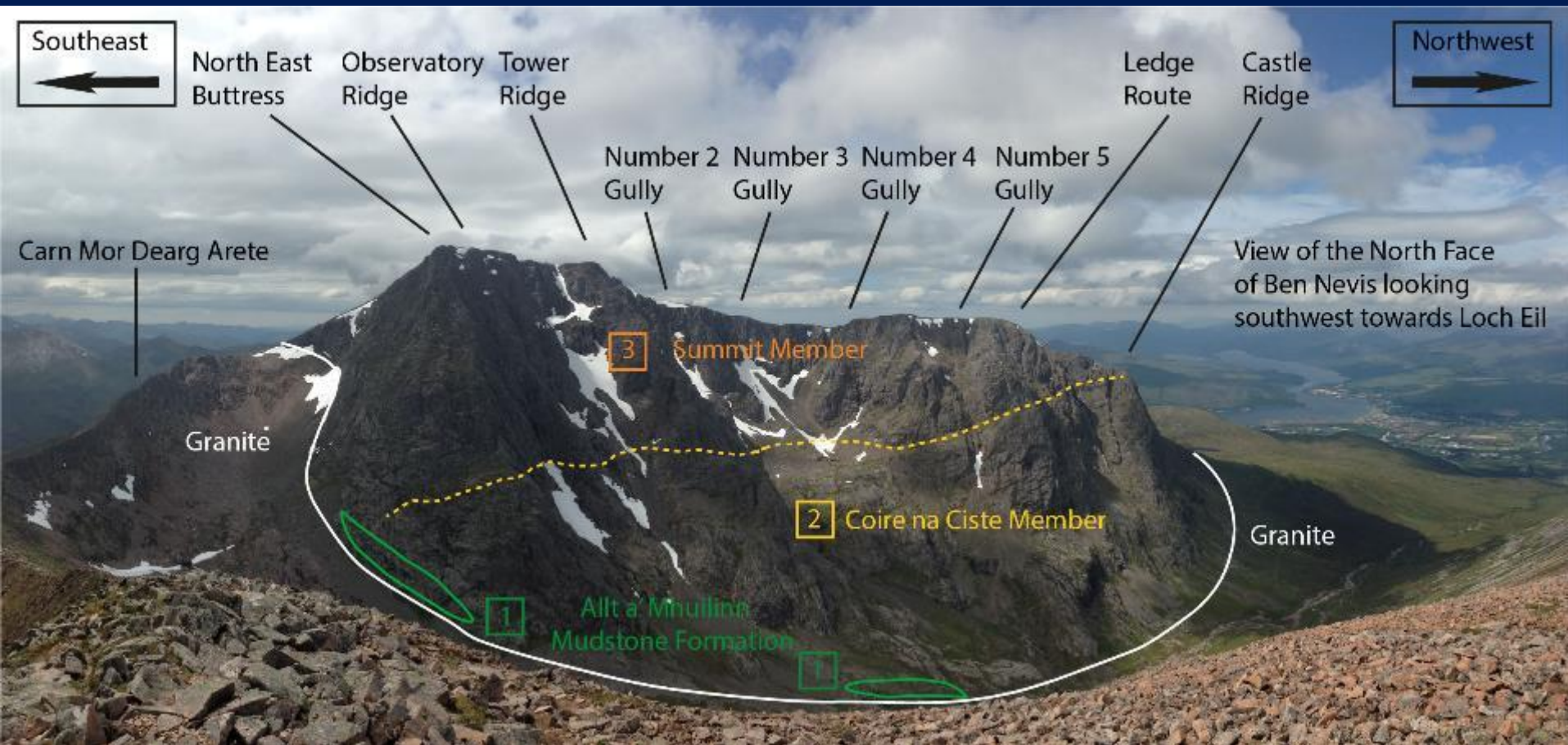
- 558 records for 313 populations of 15 Nationally Rare and Scarce types.
- Many new sites for Highland Saxifrage, Alpine Meadow-grass, Alpine Speedwell, Sibbaldia, Russet Sedge, Arctic Mouse-ear, Alpine Lady-fern and Starwort Mouse-ear.
- Two new populations of Wavy Meadow-grass, including the largest population in the UK.



More highlights!

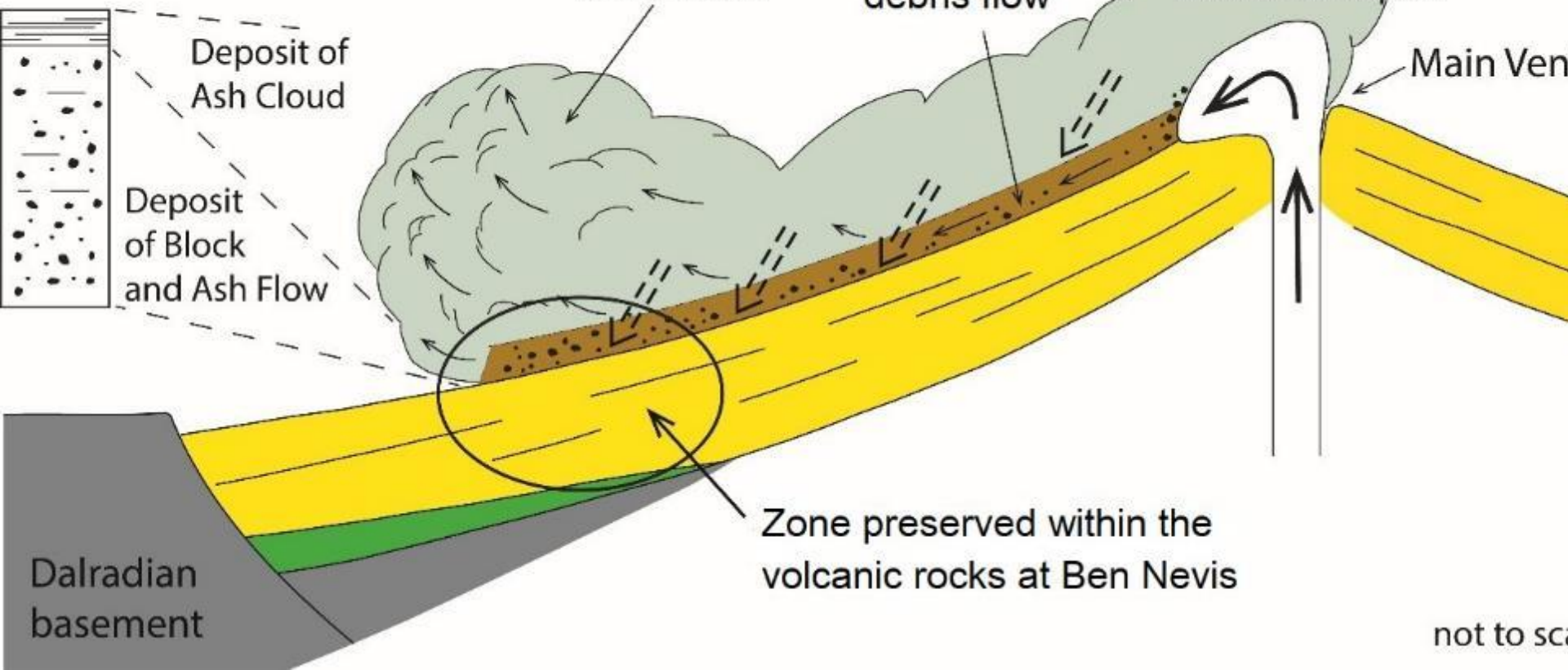
- Three new locations for Tufted Saxifrage, previously known at only two locations in the SSSI.
- New locations for Alpine Saxifrage and Curved Woodrush, previously unknown from the Ben.
- New population of Hare's-foot Sedge, largest in SSSI.
- First records in 60 years for two scarce Lady's Mantles.
- New British altitudinal records for 19 species!





SE

- Summit Member
 - Coire na Ciste Member
 - Allt a' Mhuilinn Mudstone Formation
- Ben Nevis Volcanic Formation







Thanks

- Mike Pescod and the climbing team
- Botanists – Gordon Rothero, Dan Watson, Matt Harding, Jim McIntosh
- Cathy Mayne/SNH, JMT, NTS
- Nevis Landscape Partnership
- Roddy Muir and geologists/Midland Valley

