



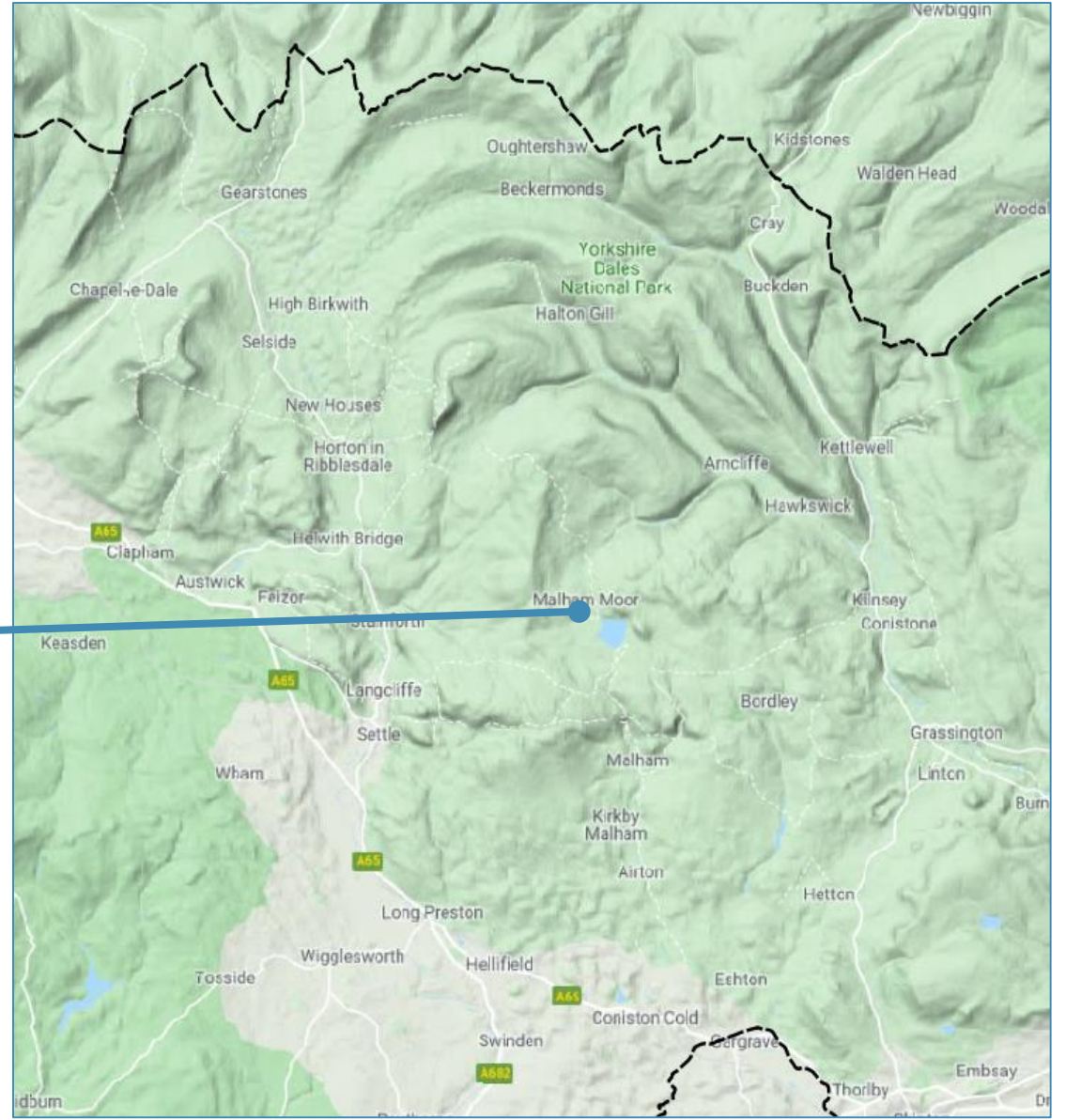
Annual Summer Meeting

MALHAM TARN, YORKSHIRE DALES

13TH – 19TH JULY 2019



Malham Tarn FSC Centre



40-50 attendants

Bloggers:

- Jonathan Shanklin
- Me
- Colin Conroy
- Kate Tucker
- Chris Smith

Ian Woodward @i_woodward · 1 Aug 2018
Today's pics from the [#BSBISummerMeeting](#) - day 5 (21st July) - Marsh Lousewort, Marsh St Johns Wort and Bog Myrtle



🗨️ 1 ❤️ 7

BSBI Summer Meeting 2019: Run-up and Day One

You know it's really summer when the week-long BSBI Annual Summer Meeting (ASM) kicks off! This year the ASM is based in [FSC Malham Tarn](#) in the Yorkshire Dales National Park, and organiser Jonathan Shanklin has organised a week of excursions to sites in the area where interesting wild flowers are likely to be found.




Botanists in the field at the 2019 Summer Meeting
Image: Kelli Imms

Jonathan set off from his home county of [Cambridgeshire](#) (where he's [County Recorder](#)) on Thursday, so he could be ready to greet early arrivals for the ASM, due to start on Saturday. Of course, expecting Jonathan to wear blinkers and not do any botanising en route is ever going to happen, so here is his account of his journey to Malham Tarn and a report of Day One of this year's Summer Meeting:



"Despite threats of thunderstorms, the area south of Skipton remained dry all day, though by the time



A great lunch spot on the BSBI 2019 Summer Meeting
Image: C. Conroy

"The journey back to the centre was broken by a stop for ice-creams and pictures of the Ribbleshead Viaduct which inevitably included more botanising and several species added to the day's list, including *Saxifraga hypnoides* (Mossy Saxifrage) and *Vaccinium oxycoccos* (Cranberry)".

Many thanks to Colin for his report. You can find a link to [Colin's blog](#) in the list on the right of Blogs by BSBI members - this post will also appear there.

You can see more photos from the BSBI Summer Meeting if you click [here](#).

Another report to come tomorrow as we approach the halfway point in the week-long Summer Meeting.

Wendy English @WhitbyBotanist · Jul 15
Ingleborough today [#BSBISummerMeeting](#). Melancholy thistle & golden rod in pavement grykes; frog orchid on grassland.
[@BSBIbotany](#)



Why you are sorry you weren't there...





Mire



Dwarf milkwort (*Polygala amarella*)



Bird's-eye primrose (*Primula farinosa*)



Great yellow-sedge
(*Carex flava*)



Alpine bartsia (*Bartsia alpina*)



Narrow small-reed
(*Calamagrostis stricta*)



Lesser tussock sedge
(*Carex diandra*)



Variegated horsetail
(*Equisetum variegatum*)



Dactylorhiza x venusta



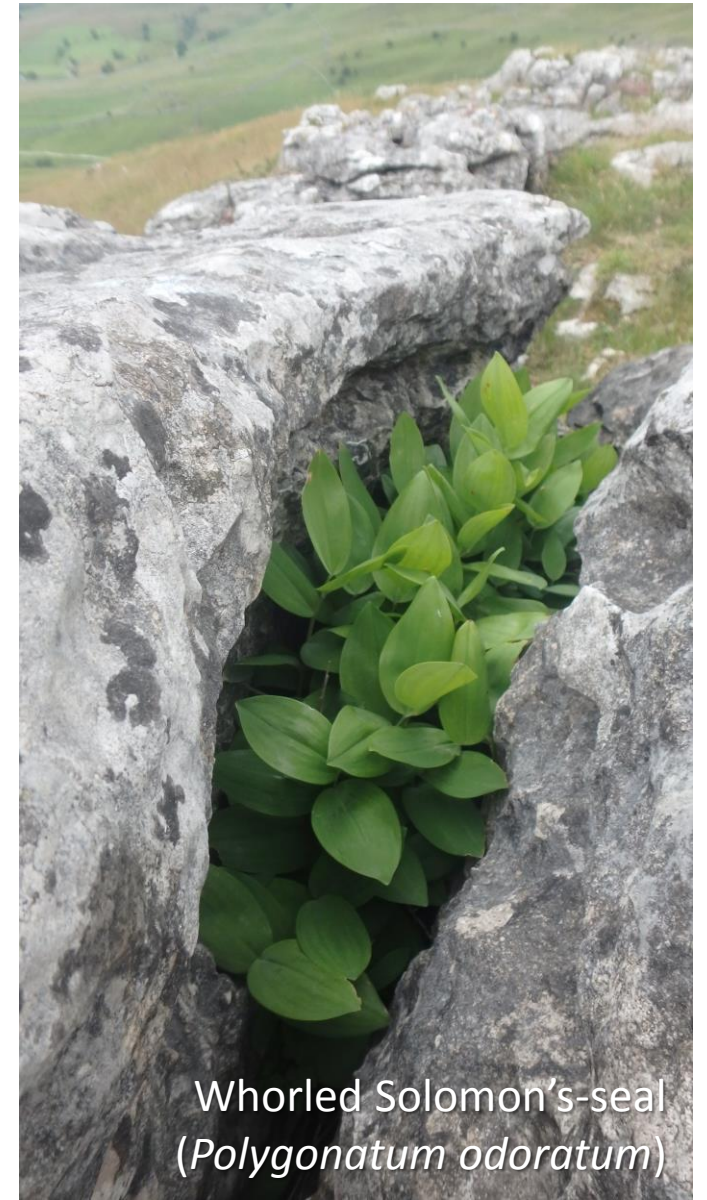
Limestone pavement & grassland



Rigid buckler-fern
(*Dryopteris submontana*)



Baneberry
(*Actaea spicata*)



Whorled Solomon's-seal
(*Polygonatum odoratum*)

Melancholy
thistle
(*Cirsium
heterophyllum*)





Limestone crags



Pen y Ghent



Spring sandwort
(*Minuartia verna*)



Purple saxifrage
(*Saxifraga oppositifolia*)



Mountain avens (*Dryas octopetala*)



Rock whitebeam (*Sorbus rupicola*)

Moorland





Cloudberry (*Rubus chamaemorus*)



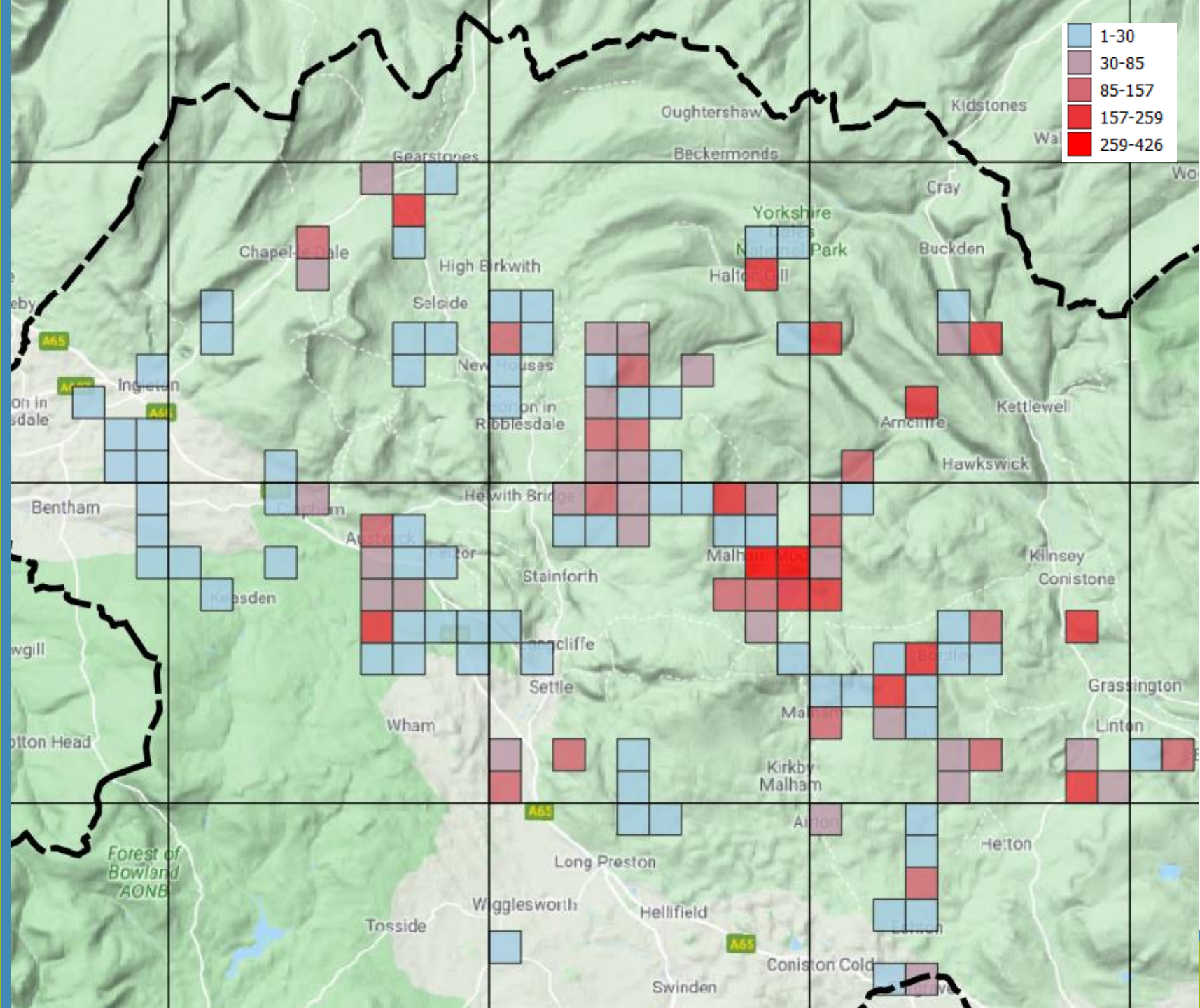
Stiff sedge (*Carex bigelowii*)



Trichophorum x foersteri

Lots of data

- 8,794 records
- 873 taxa (745 spp.)





Thanks to

Jonathan Shanklin

Organisers on the Meetings and
Communications Committee