

Botanical Newsletter for  
South Northumberland.  
Issue 6, April 2019.  
By: John Richards

*Myosotis stolonifera*, Carriers Way, Allenheads.

## Recording

As the 2019 plant recording season opens, please remember that this is the last full season of recording for Atlas 2020, and we need a hard push to bring our post-2000 date category coverage up to date. Otherwise it will seem that plants have become relatively rarer and more threatened over time in South Northumberland than elsewhere, which is almost certainly not the case!

Indeed, if you compare post-2000 category tetrad coverage in South Northumberland with that of most English counties, it is not impressive. One might say that our county is not typical, and that our extensive hill country with large areas covered by the Wark, Kielder, Slaley and Harwood forests, and part of the Otterburn Ranges, is not readily reached or worked, nor is it always very rewarding botanically. In fact, the forests have had some of the best recent coverage. Well done, Gordon Simpson and Bill Burlton!

On the next page, I am reproducing the most recent map showing post-2000 tetrad coverage in vc 67. Whatever your own opinion of your botanical ability (and it is almost certainly unduly modest!) can I try to persuade you to pick out a few of these unrecorded tetrads, and to visit them once or twice in the coming year? Select a monad (one kilometre square on OS maps) within the tetrad (the most potentially interesting or most accessible one if you like!) and restrict your recording within the tetrad (two kilometre square) to this monad. However, any records are better than none, and the more the merrier!

How do I make a record? By all means make records singly if you want and send them in as below. However, if you are recording a monad, please download a recording card from the website 'Flora North-east'. Select the recording card for vc 67\*, you can have Latin or English versions! When making a record, score out the name, NOT the code number! Note the date, monad four-figure map reference, locality and recorders name. Please list any extra plants on the back, or underneath. (\* for the coast, use the vc 68 card). If you are uncertain as to the identity of a plant, please send a photo and/or a pressed plant (dry please!) to me at [hightreesgarden@btinternet.com](mailto:hightreesgarden@btinternet.com) or High Trees, South Park, Hexham NE46 1BT.

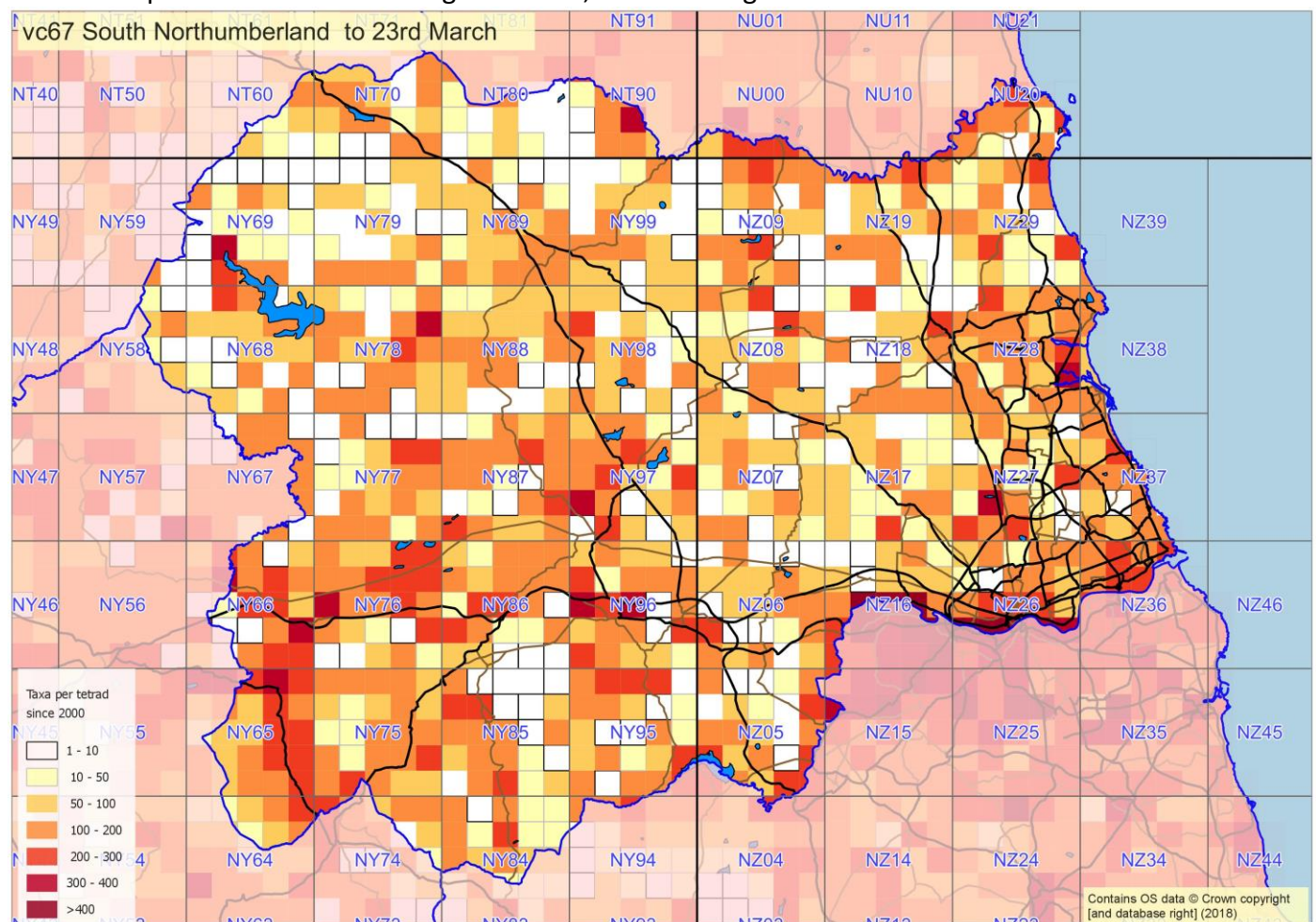


Where do I send records? If you are filling in a card for a monad, please send it to Quentin Groom. This is best done by scanning the card and emailing it to the address on the Flora North-east website (remember to scan both sides if you use both sides of the card and make sure the monad number is on both!). You could also post the card to Q. Groom, Louis Pelsersquare 1, 3080 Telvuren, Belgium. Another possibility is to send cards or individual records to the local biological recording centre. You will find this at [www.ericnortheast.org.uk/](http://www.ericnortheast.org.uk/) and follow the instructions you find there.

A further possibility is to use iRecord, the Biological Records Centre system. Visit [www.brc.ac.uk/irecord](http://www.brc.ac.uk/irecord) and click 'create new account' button. If you wish, records can be entered with a smartphone using the app at [irecord.org.uk/app](http://irecord.org.uk/app). A feature of the system is that exact geographical details can be recorded by clicking on a map. Records can be entered individually, or by using the 'grid-square' recording mode if you are listing for a square.

Please note that 'Stace 4', the latest edition of Clive Stace's 'New Flora of the British Isles' includes a large number of changes to names and classification compared to the 2009 edition ('Stace 3') that is familiar to most recording systems and cards. As the recording code numbers do not change, it is easiest for 2020 to continue to use Stace 3. Richard Poppleton has produced a list of the changes which most affect us here in the North-east, and a form of this can be found at the end of this Newsletter. Many thanks to Richard for all the hard work involved, and indeed to Martin Rand, who some will remember as our Guide in the New Forest, for producing the original from which this is a pared-down version. There are some name changes to very common plants, e.g. for ragwort, couch and wavy hair-grass!

Here is the post-2000 tetrad coverage for vc 67, not including 2018.



Because much of the later analysis is likely to be made on a hectad (10 km square) basis, it is particularly important that we concentrate on unrecorded tetrads that are part of poorly-recorded hectads. Obvious

examples of the latter are NT86 (Ranges), NY75, NY79 (Ranges in part), NZ05, NZ07, NZ17. The last three are very accessible to most folk, but are not necessarily in the most exciting country, which might explain the poor coverage.

## **Stellaria pallida**

There is nothing, you might think, much more boring than chickweed. However, Lesser Chickweed, *Stellaria pallida*, is an interesting and rather distinctive little plant which is often mistaken but remains underrecorded. In our county it seems mostly limited to two habitats: very shallow damp soils over whinstone plates, mostly in Roman Wall country; and trodden paths in sand-dunes and cliff-tops by the sea. Gordon Young has recorded it recently in both the Tynemouth and Gloucester Lodge areas, but it is almost certainly overlooked in our coastal districts. Compared to Common Chickweed it tends to be smaller, yellower, more branched and slightly fleshy. Often it looks superficially a bit like Blinks, *Montia fontana*. You can always suspect Lesser Chickweed when you find flowers without petals, but beware the petalless form of Common Chickweed. Diagnostically, Lesser Chickweed has three or fewer stamens and most sepals less than 3 mm long.



*Stellaria pallida*, Gloucester Lodge, Seaton Sluice, Gordon Young, 2019.

## **Arctic moonworts**

In an interesting article in the January 2019 BSBI News, Fred Rumsey reports a new moonwort for the British Isles, the arctic *Botrychium nordicum* being definitely recorded from the Cairnwell, Glen Shee, as a result of molecular analysis. This taxon is rather poorly understood, but is usually distinguished by having deeply toothed margins to the frond segments. However, it is possible that this character can also be found in some *B. lunaria*. What is fascinating from our point of view is that Rumsey has traced historical specimens with this character in a number of mountainous British counties, including.....South



Northumberland! However, our plant was collected at Horsley in 1847 by one John Bigge, so it certainly wasn't alpine! (Picture overleaf). There are steep banks to the north of the village (Horsley Hill, Duns Law) which might be worth a revisit, but no later records for anywhere in NZ except for Mill Burn, west of Lead Lane (NZ0957) by George Swan in 1966!



STACE EDITION 4: **NAME CHANGES ONLY** (Adapted from Martin Rand's list on BSBI Website)

Name changes in BLUE are relevant to VC67 & 68. Those in GREEN are possibly/probably not relevant for Northumberland. The genus *Rosa* has been subject to multiple name changes and these changes have been left in black because I am not clear which may be relevant for us.

Genera within each family are in "Stace 4 order".

- 1 **LYCOPODIACEAE**
  - DIPHASIASTRUM
  - D. complanatum* => *D. x issleri*

- 20 DRYOPTERIDACEAE**  
DRYOPTERIS  
D. borrieri => D. affinis ssp. borrieri.  
D. cambrensis => D. affinis ssp. cambrensis.  
D. pseudodisjuncta => D. affinis ssp. pseudodisjuncta.
- 25 CUPRESSACEAE**  
CUPRESSUS  
X Cuprocyparis leylandii => Cupressus x leylandii.  
Xanthocyparis nootkatensis => Cupressus nootkatensis.  
Chamaecyparis lawsoniana => Cupressus lawsoniana.  
Chamaecyparis pisifera => Cupressus pisifera.
- 34 PAPAVERACEAE**  
PAPAVER  
P. pseudoorientale => P. setiferum.  
Meconopsis cambrica => Papaver cambricum.  
ROEMERIA  
Papaver hybridum => Roemeria hispida.  
Papaver argemone => Roemeria argemone.
- 42 SAXIFRAGACEAE**  
MICRANTHES  
Saxifraga stellaris => Micranthes stellaris.
- 43 CRASSULACEAE**  
RHODIOLA  
Sedum rosea => Rhodiola rosea.  
SEDUM  
Sedum confusum => Sedum kimnachii.  
PHEDIMUS  
Sedum kamtschaticum => Phedimus kamtschaticus  
Sedum hybridum => Phedimus hybridus  
Sedum spurium => Phedimus spurium.  
Sedum stoloniferum => Phedimus stoloniferus.  
Sedum stellatum => Phedimus stellatus.  
HYLOTELEPHIUM  
Sedum anacampseros => Hylotelephium anacampseros  
Sedum spectabile => Hylotelephium spectabile.  
Sedum 'Herbstfreude' => Hylotelephium 'Herbstfreude'.  
Sedum telephium => Hylotelephium telephium.  
PETROSEDUM  
Sedum nicaeense => Petrosedum sediforme.  
Sedum rupestre => Petrosedum rupestre.  
Sedum forsterianum => Petrosedum forsterianum.
- 44 FABACEAE**  
VICIA  
Lens culinaris => Vicia lens.  
ERVILLA  
Vicia sylvatica => Ervillia sylvatica.  
Vicia hirsuta => Ervillia hirsuta.  
ERVUM  
Vicia parviflora => Ervum gracile.  
Vicia tetrasperma => Ervum tetraspermum.

LATHYRUS

*Pisum sativum* => *Lathyrus oleraceus*.

48 ROSACEAE

MALUS

*M. pumila* => *M. domestica*.

STRANVAESIA => PHOTINIA

*Stranvaesia davidiana* => *Photinia davidiana*.

POTENTILLA

*Potentilla tabernaemontani* => *P. verna*

DASIPHORA

*Potentilla fruticosa* => *Dasiphora fruticosa*

ACAENA

*R. ferruginea* => *R. glauca*.

*R. x dumalis* => *R. x subcollina* (with a query).

*R. canina* 'group Dumales' => *R. squarrosa*

*R. squarrosa* x *R. vosagiaca* => *R. x dumalis*

*R. caesia* ssp. *caesia* => *R. caesia*.

*R. caesia* ssp. *vosagiaca* => *R. vosagiaca*

*R. caesia* x *R. obtusifolia* => *R. vosagiaca* x *R. tomentella*.

*R. caesia* x *R. tomentosa* => *R. vosagiaca* x *R. tomentosa* (with a query).

*R. obtusifolia* => *R. tomentella*.

*R. x bigeneris* => *R. x gremlii*.

66 VIOLACEAE

VIOLA

*V. canina* ssp. *montana* => *V. canina* ssp. *ruppii*.

67 SALICACEAE

POPULUS

*P. 'Balsam Spire'* => *P. x hastata*

SALIX

*S. fragilis* => *S. euxina*.

68 LINACEAE

LINUM

*Radiola linooides* => *Linum radiola*

69 GERANIACEAE

ERODIUM

*E. lebelii* => *E. aethiopicum*.

73 ONAGRACEAE

CHAMERION => CHAMAENERION.

*Chamerion angustifolium* => *Chamaenerion angustifolium*.

77 SAPINDACEAE

ACER

*A. pseudoplatanus* var. *villosum* => *A. villosum*

86 BRASSICACEAE

DRABELLA

*Draba muralis* => *Drabella muralis*.

91 POLYGONACEAE

KOENIGIA

*Persicaria alpina* => *Koenigia alpina*.

*Persicaria x fennica* => *Koenigia x fennica*.

Persicaria campanulata => Koenigia campanulata.  
Persicaria weyrichii => Koenigia weyrichii.  
Persicaria mollis => Koenigia mollis.  
Persicaria wallichii => Koenigia polystachya.

#### BISTORTA

Persicaria bistorta => Bistorta officinalis.  
Persicaria amplexicaulis => Bistorta amplexicaulis.  
Persicaria vivipara => Bistorta vivipara.

#### POLYGONUM

P. arenastrum => P. depressum.

#### X REYLLLOPIA

Fallopia x conollyana => X Reyllopiya conollyana.

#### REYNOUTRIA

Fallopia japonica => Reynoutria japonica.  
Fallopia x bohémica => Reynoutria x bohémica.  
Fallopia sachalinensis => Reynoutria sachalinensis.

#### RUMEX

R. frutescens => R. cuneifolius.

### 92 DROSERACEAE

#### DROSERA

D. x belezeana => D. x eloisiana.

### 93 CARYOPHYLLACEAE

#### SABULINA

Minuartia verna => Sabulina verna.

Minuartia hybrida => Sabulina tenuifolia.

#### STELLARIA

Myosoton aquaticum => S. aquatica.

### 94 AMARANTHACEAE

#### LIPANDRA

Chenopodium polyspermum => Lipandra polysperma.

#### CHENOPODIASTRUM

Chenopodium hybridum => Chenopodiastrum hybridum.

Chenopodium murale => Chenopodiastrum murale.

#### OXYBASIS

Chenopodium glaucum => Oxybasis glauca.

Chenopodium rubrum => Oxybasis rubra.

Chenopodium urbicum => Oxybasis urbica.

#### BLITUM

Chenopodium capitatum => Blitum capitatum.

Chenopodium bonus-henricus => Blitum bonus-henricus.

#### SALICORNIA

S. pusilla => S. disarticulata.

#### SALSOLA

S. kali ssp. kali => S. kali.

S. kali ssp. tragus => S. tragus.

### 101 PRIMULACEAE

#### LYSIMACHIA

Glaux maritima => Lysimachia maritima.

Centunculus minimus => Lysimachia minima.

Anagallis tenella => Lysimachia tenella.

Anagallis arvensis ssp. arvensis => Lysimachia arvensis.

Anagallis x doerfleri => Lysimachia x doerfleri.

*Anagallis arvensis* ssp. *foemina* => *Lysimachia foemina*.  
*Trientalis europaea* => *Lysimachia europaea*.

**113 BORAGINACEAE**

BUGLOSSOIDES

*Lithospermum arvense* => *Buglossoides arvensis*.

LYCOPSIS

*Anchusa arvensis* => *Lycopsis arvensis*.

**114 SOLANACEAE**

ALKEKENGI

*Physalis alkekengi* => *Alkekengi officinarum*.

SOLANUM

*S. physalifolium* (var. *nitidibaccatum*) => *S. nitidibaccatum*.

*S. sarachoides* => *S. sarrachoides*.

*S. diflorum* => *S. pseudocapsicum*

**115 OLEACEAE**

LIGUSTRUM

*L. x vicaryi* => *L. ovalifolium* 'Vicaryi'

**120 VERONICACEAE**

VERONICA

*V. austriaca* ssp. *teucrium* => *V. teucrium*

**127 LAMIACEAE**

CLINOPODIUM

*C. calamintha* => *C. nepeta*.

THYMUS

*T. x citriodorus* => *T. x carolipauli*

*T. polytrichus* => *T. drucei*.

**128 PHRYMACEAE**

MIMULUS => ERYTHRANTHE

*Mimulus moschatus* => *Erythranthe moschata*.

*Mimulus guttatus* => *Erythranthe guttata*.

*Mimulus guttatus* x (*Mimulus luteus* x *Mimulus cupreus*) => *Erythranthe guttata* x (*Erythranthe lutea* x *Erythranthe cuprea*).

*Mimulus x robertsii* => *Erythranthe x robertsii*.

*Mimulus x burnetii* => *Erythranthe x burnetii*

*Mimulus luteus* => *Erythranthe lutea*.

*Mimulus variegatus* => *Erythranthe variegata*.

*Mimulus x smithii* => *Erythranthe x smithii*.

*Mimulus x maculosus* => *Erythranthe x maculosa*.

**135 ASTERACEAE**

FILAGO

*F. vulgaris* => *F. germanica*.

LOGFIA

*Filago minima* => *Logfia minima*.

*Filago gallica* => *Logfia gallica*.

OMALOTHECA

*Gnaphalium sylvaticum* => *Omalotheca sylvatica*.

.

XEROCHRYSUM

*Helichrysum bracteatum* => *Xerochrysum bracteatum*.

LIMBARDA

*Inula crithmoides* => *Limbarda crithmoides*.



## BUPHTHALMUM

*Telekia speciosa* => *Bupthalmum speciosum*.

## SYMPHYOTRICHUM

*Aster dumosus* => *Symphyotrichum dumosum*.

*Aster novae-angliae* => *Symphyotrichum novae-angliae*.

*Aster puniceus* => *Symphyotrichum puniceum*

*Aster laevis* => *Symphyotrichum laeve*.

*Aster concinnus* => *Symphyotrichum laeve* var. *concinnum*.

*Aster x versicolor* => *Symphyotrichum x versicolor*.

*Aster novi-belgii* => *S. novi-belgii*.

*Aster x salignus* => *Symphyotrichum x salignum*.

*Aster lanceolatus* => *Symphyotrichum lanceolatum*.

*Aster pilosus* => *Symphyotrichum pilosum*.

*Aster squamatus* => *Symphyotrichum squamatum*.

## GALATELLA

*Aster sedifolius* => *Galatella sedifolia*.

*Aster linosyris* => *Galatella linosyris*.

## TRIPOLIUM

*Aster tripolium* => *Tripolium pannonicum*.

## ERIGERON

X *Conyzigeron huelsenii* => *Erigeron x huelsenii*.

*Conyza canadensis* => *Erigeron canadensis*.

*Conyza floribunda* => *Erigeron floribundus*.

*Conyza sumatrensis* => *Erigeron sumatrensis*.

*Conyza bonariensis* => *Erigeron bonariensis*.

## COTA

*Anthemis tinctoria* => *Cota tinctoria*.

## SENECIO

*S. x subnebrodensis* => *S. x londinensis*.

## JACOBAEA

*Senecio cinerea* => *Jacobaea maritima*.

*Senecio x albescens* => *Jacobaea x albescens*.

*Senecio x thuretii* => *Jacobaea x thuretii*.

*Senecio jacobaea* => *Jacobaea vulgaris*.

*Senecio x ostenfeldii* => *Jacobaea x ostenfeldii*.

*Senecio aquaticus* => *Jacobaea aquatica*.

*Senecio aquaticus* ssp. *aquaticus* => *Jacobaea aquatica* ssp. *aquatica*.

*Senecio aquaticus* ssp. *ornatus* => *Jacobaea aquatica* ssp. *ornata*.

*Senecio erucifolius* => *Jacobaea erucifolia*.

*Senecio paludosus* => *Jacobaea paludosa*.

## PETASITES

*P. fragrans* => *P. pyrenaicus*.

## HELENIUM

*H. autumnale* => *H. x clementii*.

## 136 ESCALLONIACEAE

### ESCALLONIA

*E. macrantha* => *E. rubra* var. *macrantha*.

## 145 APIACEAE

### HELOSCIADIUM

*Apium nodiflorum* => *Helosciadium nodiflorum*.

*Apium inundatum* => *Helosciadium inundatum*.

## 156 POTAMOGETONACEAE

### STUCKENIA

Potamogeton filiformis => Stuckenia filiformis.  
Potamogeton x suecicus => Stuckenia x suecica.  
Potamogeton pectinatus => Stuckenia pectinata.

**157 RUPPIACEAE**

RUPPIA

R. cirrhosa => R. spiralis.

**163 IRIDACEAE**

IRIS

Hermodactylis tuberosa => Iris tuberosa

CROCUS

C. vernus ssp. vernus => C. neapolitanus.

C. vernus ssp. albiflorus => C. vernus.

C. vernus x C. tommasinianus => C. neapolitanus x C. tommasinianus.

C. chrysanthus x C. biflorus => C. x hybridus (binomial confirmed).

C. x stellaris => C. x luteus.

**164 ALLIACEAE => AMARYLLIDACEAE**

ALLIUM

Nectaroscordium siculum => Allium siculum.

Nectaroscordium siculum ssp. siculum => Allium siculum ssp. siculum.

Nectaroscordium siculum ssp. bulgaricum => Allium siculum ssp. dioscoridis.

**175 CYPERACEAE**

ELEOCHARIS

E. palustris ssp. vulgaris => E. palustris ssp. waltersii.

CAREX

C. oederi => C. viridula.

Kobresia simpliciuscula => Carex simpliciuscula.

**176 POACEAE**

ORYZOPSIS => OLOPTUM

Oryzopsis miliaceum => Oloptum miliaceum.

BRACHYPODIUM

B. distachyon => B. hybridum

DRYMOCHLOA

Festuca altissima => Drymochloa sylvatica.

AVENELLA

Deschampsia flexuosa => Avenella flexuosa.

HELICTOCHLOA

Avenula pratensis => Helictochloa pratensis.

ELYMUS

Elytrigia repens => Elymus repens.

Elytrigia x drucei => Elymus x drucei.

Elytrigia x laxa => Elymus x laxus.

Elytrigia atherica => Elymus athericus.

Elytrigia atherica f. setigera => Elymus athericus f. setigerus.

Elytrigia x acuta => Elymus x obtusiusculus.

Elytrigia juncea => Elymus junceiformis.

X ELYTRORDEUM => X ELYHORDEUM

X Elytrordium langei => X Elyhordeum x langei.