

GIS : an introduction for Recorders

or beyond MapMate & Excel

Jerry Clough

Maps Matter Blog: sk53-osm.blogspot.com

@SK53onOSM; jrclough2@yahoo.co.uk

Reusable under Creative Commons CC-BY-SA

Outline

- **Introduction**
 - GIS in BSBI context
 - Focus on specific aspects
 - QGIS & Data
- **Common Principles**
 - Key things to know
 - Stuff which can be ignored
- **Some basic Processes**
 - Base Maps
 - Progress Maps (from data)
 - Maps for print/web
 - Distribution maps
- **Learning more**

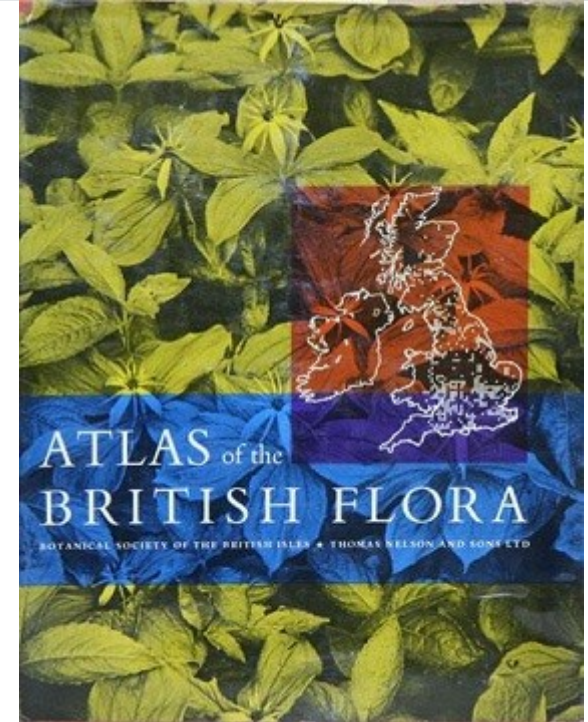
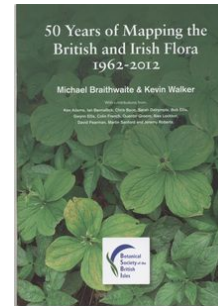
A little history

- **Invented around 1960 in Canada**
 - Used mainframe computers
- **Desktop GIS appeared in the 1980s**
 - Still very specialised & expensive
- **Widespread usage by 2000**
 - Including nature conservation
 - But costs limited skill base
- **Open Source GIS in 2000s**
 - Free, initially less powerful
- **Democratised in 2010s**
 - Rapid improvement of free software
 - Availability of Open Data from 2010

A little history

- **Invented around 1960 in Canada**
 - Used mainframe computers
- **Desktop GIS appeared in the 1980s**
 - Still very specialised & expensive
- **Widespread usage by 2000**
 - Including nature conservation
 - But costs limited skill base
- **Open Source GIS in 2000s**
 - Free, initially less powerful
- **Democratised in 2010s**
 - Rapid improvement of free software
 - Availability of Open Data from 2010

BUT...



GIS: Toolbox for Geographical Data

- **Creation**
- **Manipulation**
- **Viewing & Visualisation**
- **Exploration**
- **Maps**
- **Analysis**
- **Producing Outputs**
 - Images
 - Printed Maps
 - Input for DTP

GIS: Toolbox for Geographical Data

- Creation
- Manipulation
- Viewing & Visualisation
- Exploration
- **Maps**
- Analysis
- **Producing Outputs**
 - Images
 - Printed Maps
 - Input for DTP

QGIS : Free & Open GIS software

- **Developed by OSGeo**
 - worldwide consortium of companies & universities
 - since 2002
- **Long-term stable releases available**
 - Now on version 3.
- **Comparable to ArcGIS (market leader)**
- **Free**
- **Easy to install**
- **Multiplatform (Macs, PCs & Linux)**
- **Extended by add-on 'Plug-ins'**
 - Notably FSC Tools (no support for Irish Grid)
- **Support available**
 - User Groups in UK
 - Scotland
 - South East
 - Google+ Group
 - Widely used:
 - Local authorities
 - RSBP / Woodland Trust
 - BAS Mapping Group (Magic)
 - ? some Wildlife Trusts
 - FSC run courses

Available (Open) Data of Interest

- **Vice county boundaries**
 - GB: NBN; Ireland: OSM
- **General geographic data**
 - OSGB Open Data
 - Osi/OSNI more limited
 - OpenStreetMap
- **Admin boundaries (all 3 OS)**
- **Elevation & contours**
 - OSGB (25 m)
 - SRTM (30 m)
 - EA/NRW (1-2 m, but partial)
- **Habitat/Landuse/Landcover**
 - Natural England (many datasets)
 - SNH (only via WMS?)
 - NRW (Phase 1 etc)
 - EEA (Corine & Urban Atlas)
 - CEH (Crop Map)
- **Other records**
 - NBN/GBIF
- **Geology**
 - BGS only (1:625k scale only)

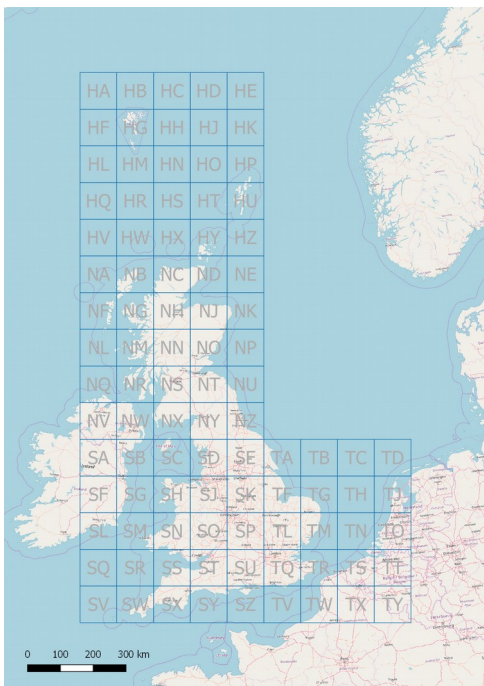
Common Principles

- **Data**
- **Layers**
- **Projections**
- **Grid References**

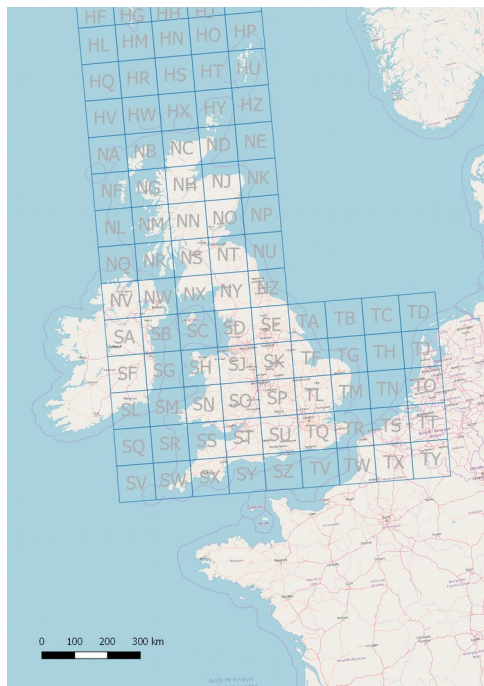
Layers

- **Data is held in set of ordered layers (a project)**
 - Crucial for map making
 - ‘Painter’s Algorithm’
- **Each of a consistent type**
 - Points, lines, areas etc
 - One to many elements
- **Layers can be styled**
- **Vector layers are attributed**
 - Basically tabular data
- **Layers can be filtered**
 - Vectors by attributes
 - Rasters by pixel values

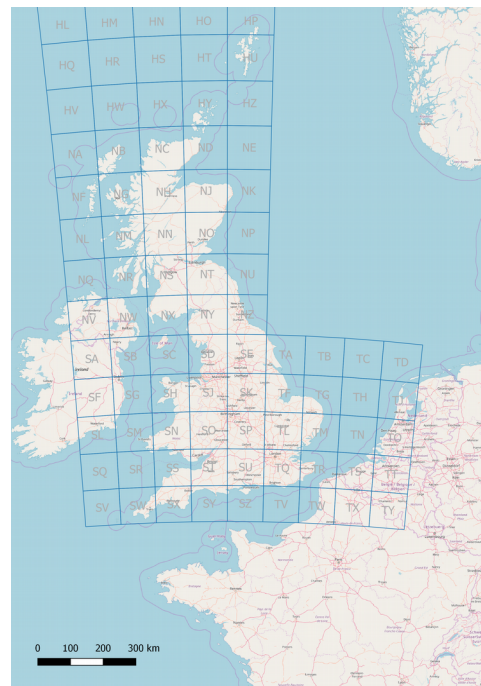
Projections



OSGB (27700)



OSi/OSNI (29002)



Webmaps (3857)



WGS84 (4326)

GIS & Grid References: A WARNING

- **GIS Software is designed to work with hundreds of different projections.**
- **It deals in x & y co-ordinates as numeric values**
- **Classic grid references will not be interpreted as locations**
 - Exceptionally the FSC tools do know about OSGB GRs.
- **100km Grid Squares also have numeric x,y co-ordinates at their origin (SJ is 300 000, 300 000; C is 400 000, 200 000)**
- **Files of GIS data for monads, tetrads, hectads are useful.**

Types of Data

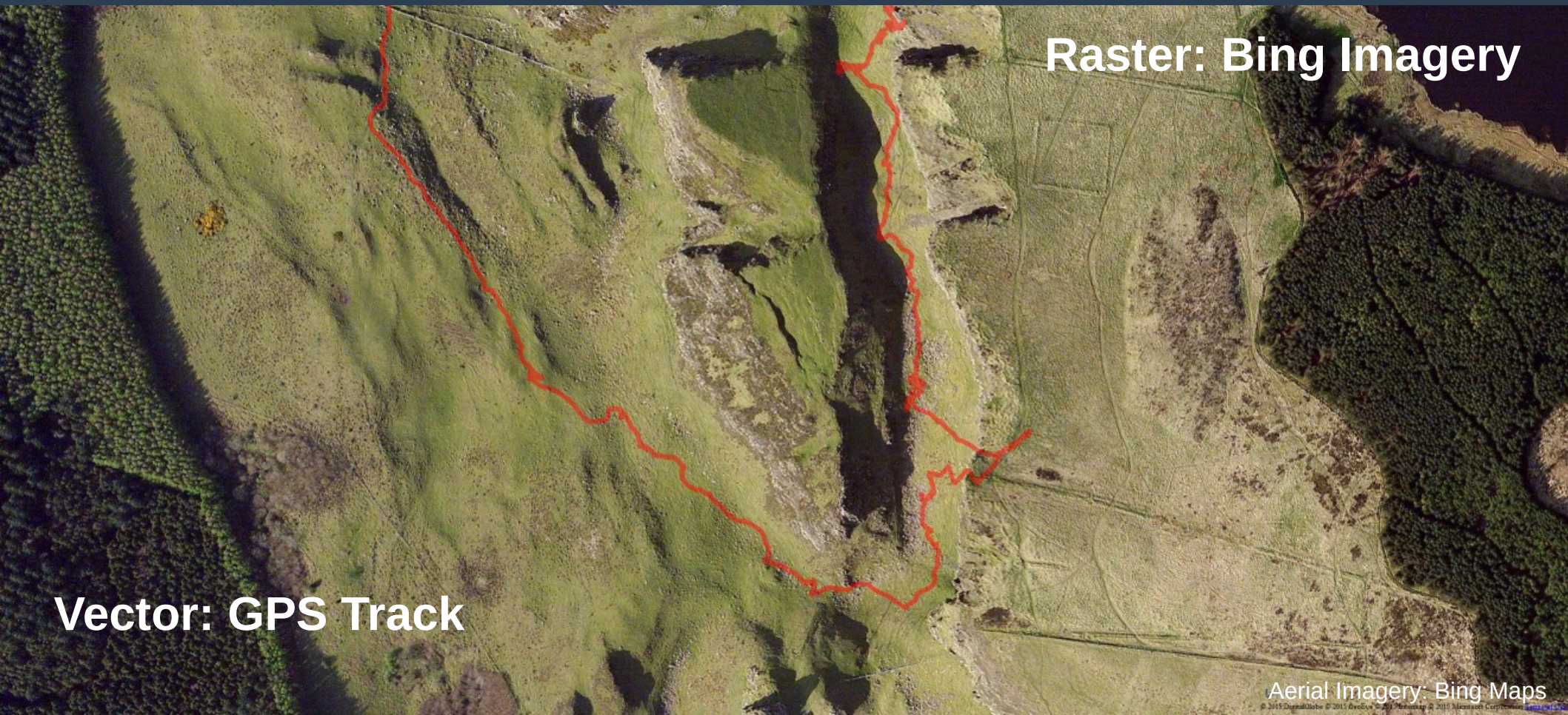
Vector

- Points, lines, areas etc.
- Available as data (files) or services
- Many file formats:
 - Shapefiles
 - MapInfo
 - GPX (GPS), KML (Google Earth)
 - Geojson
 - CSV with co-ordinates

Raster

- 2D array of pixels or other data
- Associated information about the area covered ('georeferenced')
 - Internal to data (GeoTIFF)
 - External 'world' file
- Each pixel represents a given area on the ground
 - e.g. imagery: 30m Landsat 25 cm Google, 3 cm drone.

Types of Data



Raster: Bing Imagery

Vector: GPS Track

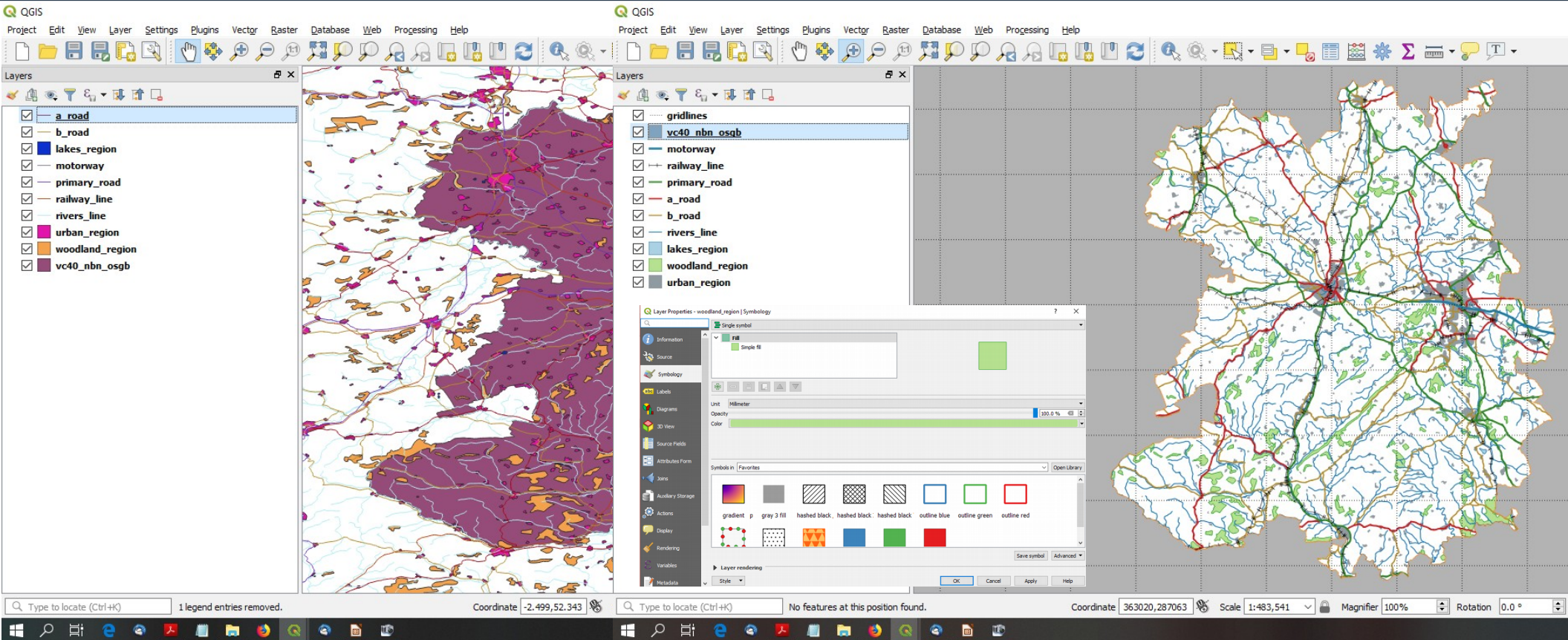
Aerial Imagery: Bing Maps

© 2015 Microsoft. All rights reserved. Microsoft, Bing, and the Bing logo are either registered trademarks or trademarks of Microsoft Corporation in the United States and/or other countries.

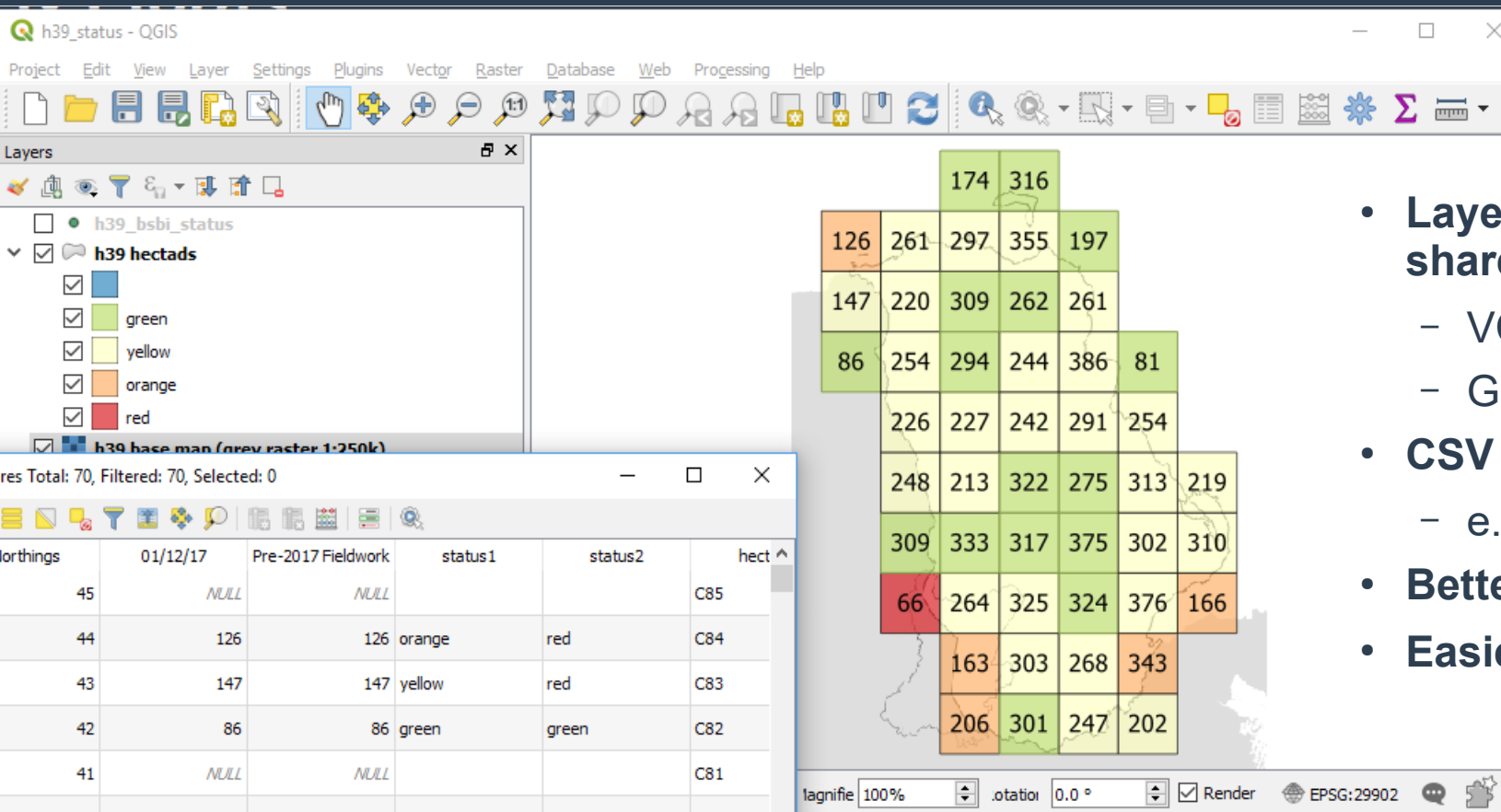
Basic Tasks in QGIS



QGIS Basics: Creating a simple VC base map

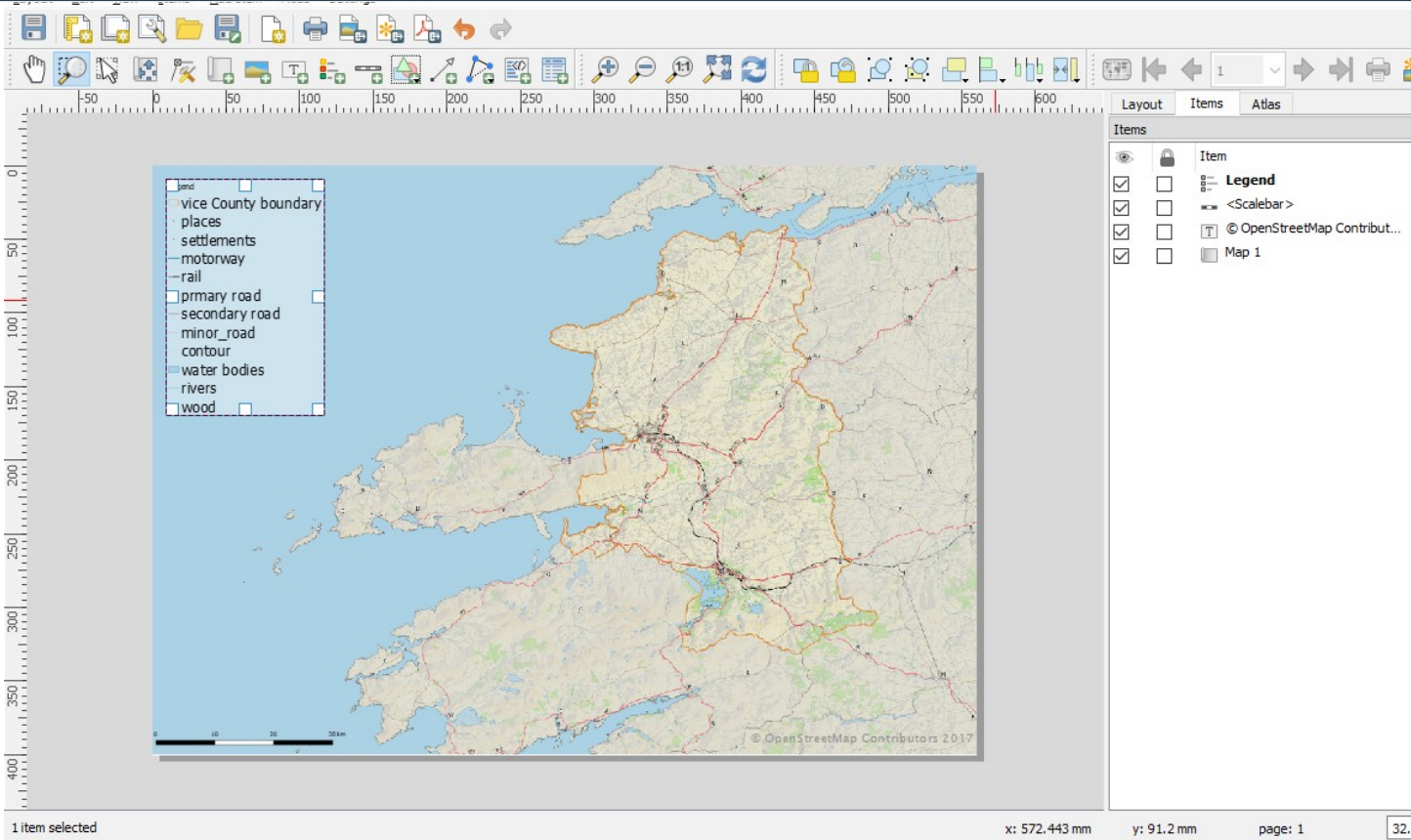


QGIS Basics: Progress Reporting



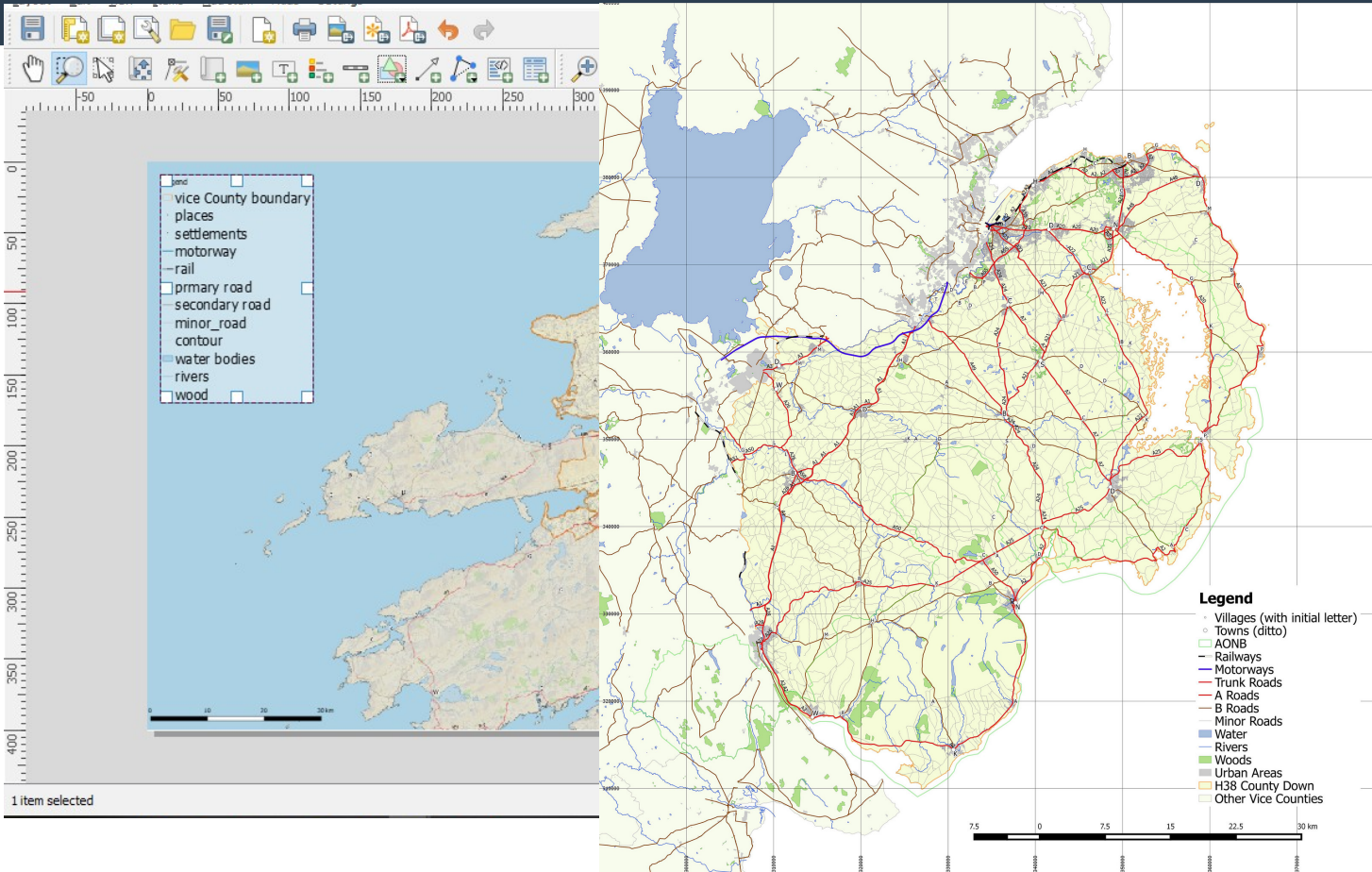
- **Layers can be linked on a shared attribute**
 - VC Number
 - Grid Square name
- **CSV or S/s data as a layer**
 - e.g., from MapMate
- **Better quality reporting**
- **Easier to maintain**

QGIS Basics: Print (& other output) Layout



- Like a drawing package
- Layout elements
 - 1 or more maps (e.g., Shetland in a box)
 - Map furniture (scale, legend, title, N arrow, grids, copyright)
- Control styling
- Scale & bounds
- Templates
- Output size
- Output formats
 - Image, SVG, PDF

QGIS Basics: Print (& other output) Layout



- Like a drawing package
- Layout elements
 - 1 or more maps (e.g., Shetland in a box)
 - Map furniture (scale, legend, title, N arrow, grids, copyright)
- Control styling
- Scale & bounds
- Templates
- Output size
- Output formats
 - Image, SVG, PDF

Resources & Learning More

- **Today**
 - I'm here all day for queries/demos/workshop sessions
- **DVD with Open Data & QGIS Installation**
 - Copies with Louise & Country Reps
- **Video showing principles in action**
 - <https://vimeo.com/271445019> (~10 minutes, no commentary)
- **Maps for MapMate**
 - Ireland only at present (on DVD)
 - Other VCs & alternative styles by request
 -

Maps & Floras

- ... new Flora of Sussex ... arrived ... so I looked for a map to refresh my memory of locations ... surely a decent map is a prerequisite of a county Flora?
- David Pearman
letter in *BSBI News* Sept 2018 p. 80.
- This vast tome, measuring 7cm thick and weighing several kilograms, sets out to be 'the first post-modernist county flora'On the other hand, the normally obligatory distribution maps are dispensed with. In the author's view, dot maps are insufficiently detailed ...
- Peter Marren's review of Mick Crawley's *Flora of Berkshire*.
British Wildlife, December 2005

Supplementary Slides

Data: Open Data Portals

- **Great Britain**
 - OS(GB) Open Data
 - BGS
- **England**
 - Natural England
 - Environment Agency
- **Wales**
 - Natural Resources Wales
- **Scotland**
 - SNH
- **Northern Ireland**
 - OSNI Open Data
<https://www.nidirect.gov.uk/services/osni-open-data-portal>
- **Republic of Ireland**
 - OSI Open Data
<https://data-osi.opendata.arcgis.com/>
- **EEA**
- **OpenStreetMap**
 - Geofabrik Download server
 - Overpass-Turbo

Examples of Vector Data

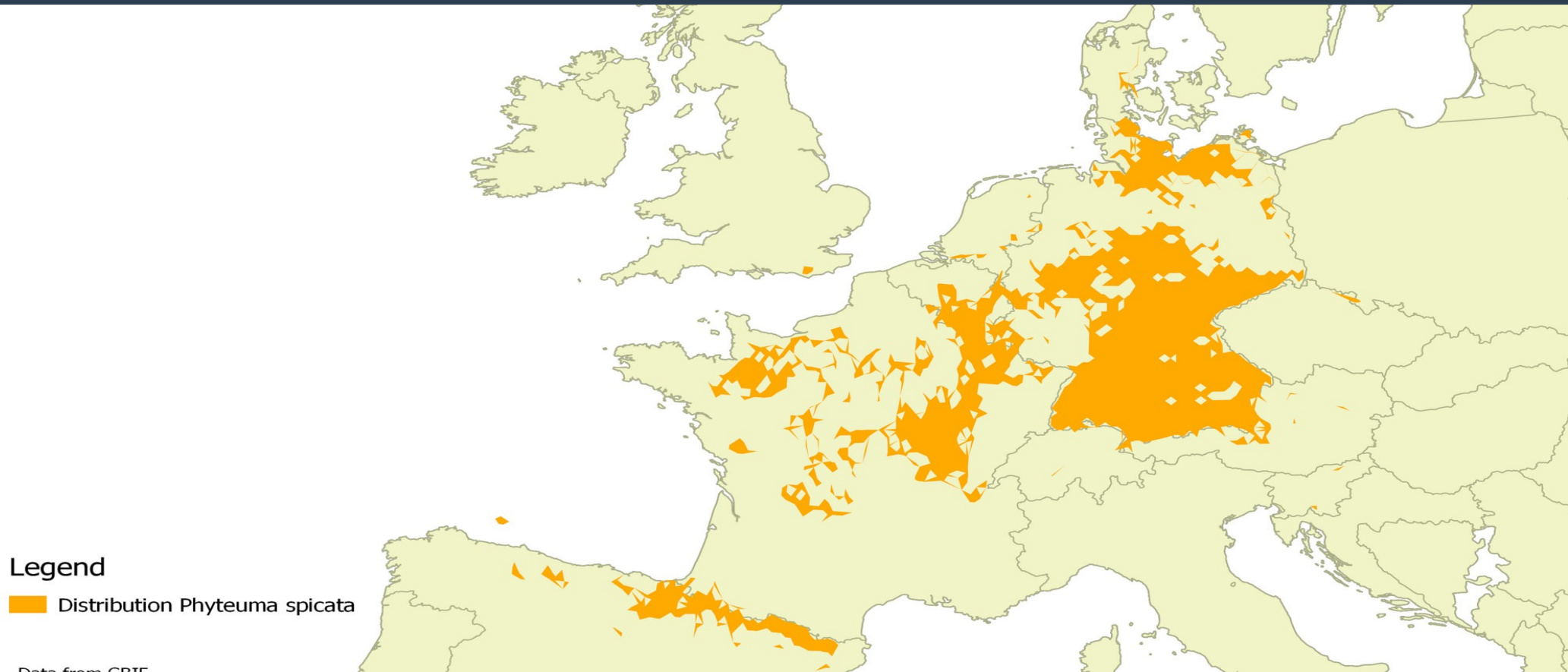
- **Plant records!**
- **Boundaries:**
 - Vice Counties
 - SSSI/ASSI, NNR/LNR, etc
 - Administrative
- **Habitats**
 - CCW Phase 1 for Wales
 - NVC mapping SNH
 - NE Priority Habitats
- **Landuse/landcover**
 - EEA Corine
- **General geographical features**
 - Roads
 - Waterways (centre lines & areas)
 - Woods
 - Place names

- **2D array of pixels or other data**
- **Pictures (scans of maps)**
- **Many web maps**
- **Aerial & Satellite Imagery**
- **Elevation models**
- **Map ‘tiles’ (web maps)**

Examples of Raster Data

- **Pictures**
 - Old maps
 - **Many web maps**
 - **Aerial & Satellite Imagery**
 - **Elevation models**
 - **Map ‘tiles’ (web maps)**
- **2D array of pixels or other data**
 - **Pictures (scans of maps)**
 - **Many web maps**
 - **Aerial & Satellite Imagery**
 - **Elevation models**
 - **Map ‘tiles’ (web maps)**

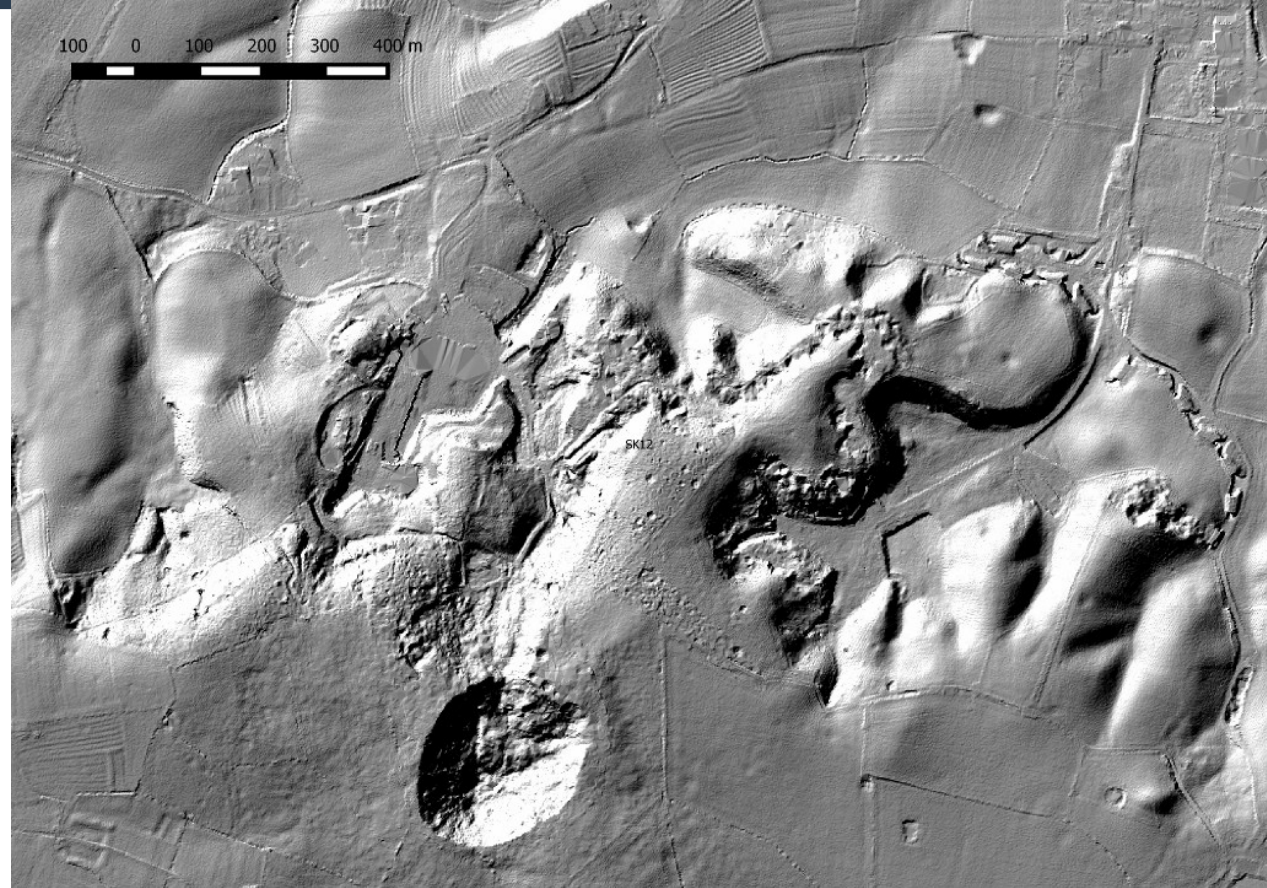
Gallery of Examples



Data from GBIF

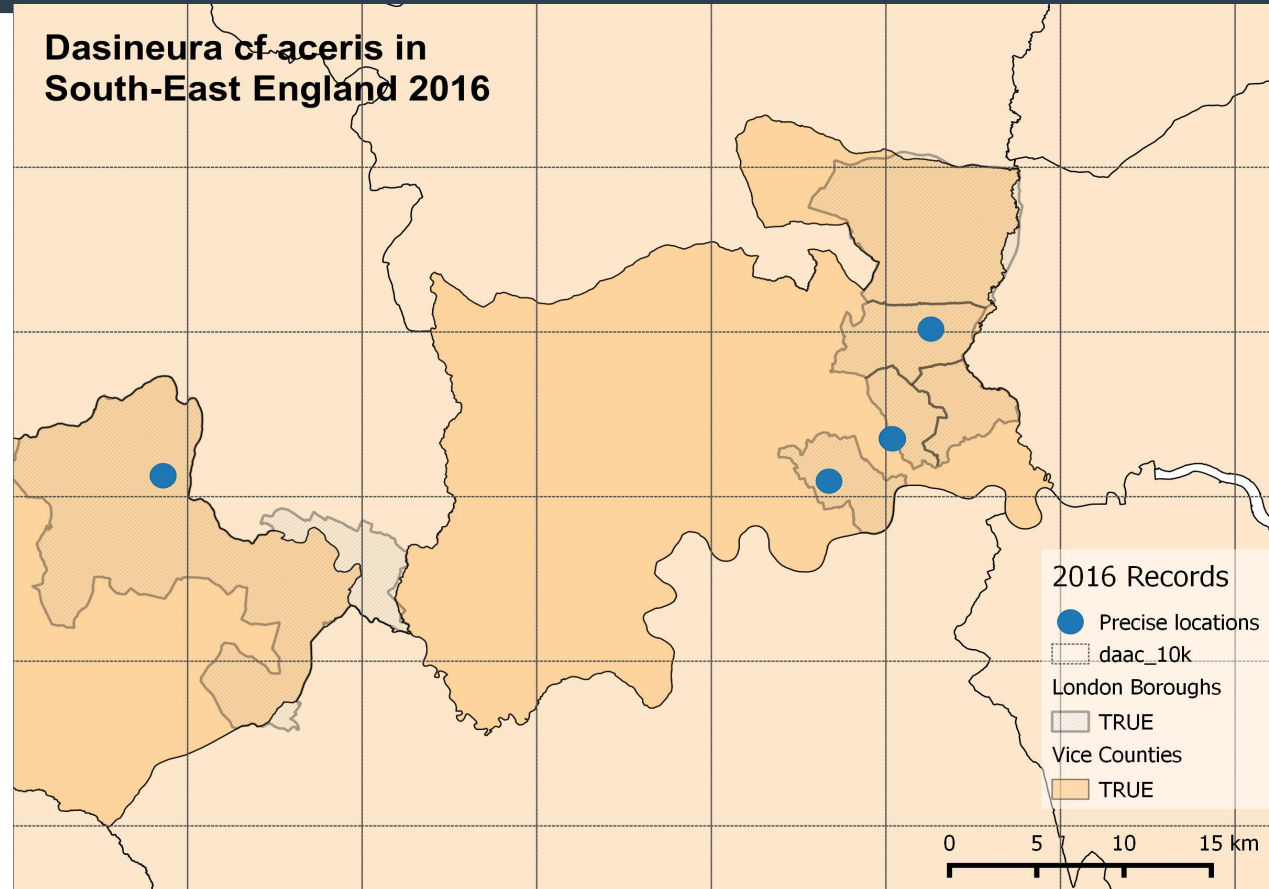
Fault Crater, Digital Surface Model

- Created from Environment Agency Lidar
- Use Raster Hillshade option
- Crater(s) caused by explosion in ordnance store in old gypsum mine 1944,



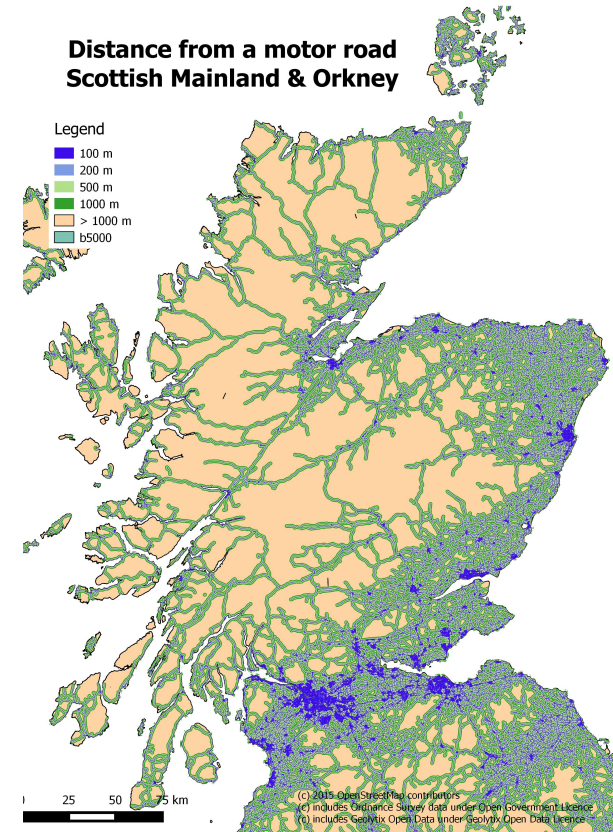
Gall new to B&I: *Dasineura cf aceris*

- CSV file of records (lat/lon, vc, local auth, recorder)
- Combined with
 - NBN VC shapes
 - OS Boundary Line shapes



Distance of places from nearest road

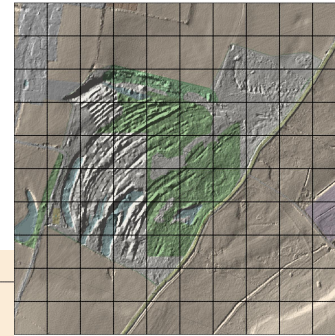
- **Prepared for Hugh Warwick**
 - Author of *Edgescapes*
 - Hedgehog expert/enthusiast
 - By chance we have a mutual friend
- **Use road shape (from OpenStreetMap)**
 - Buffer roads by increasing distances
 - Overlay areas so that smaller distances are on top.



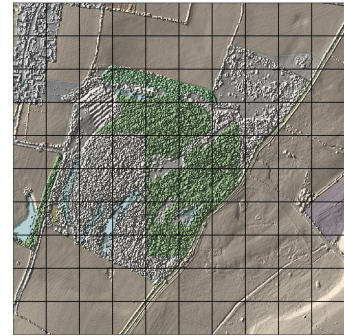
Ufton Fields Nature Reserve, VC38

- Prepared for me & Coventry NHS
 - Gall recording field meeting
 - Share detailed location finds
- Use :
 - OpenStreetMap base map
 - EA Lidar data
 - Contours from Lidar data
 - Grid overlay in composer
 - Composer for layout

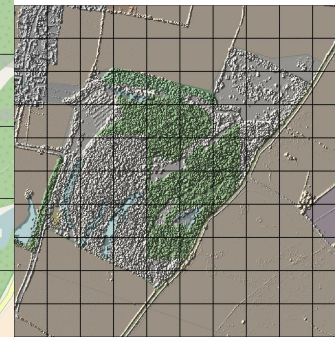
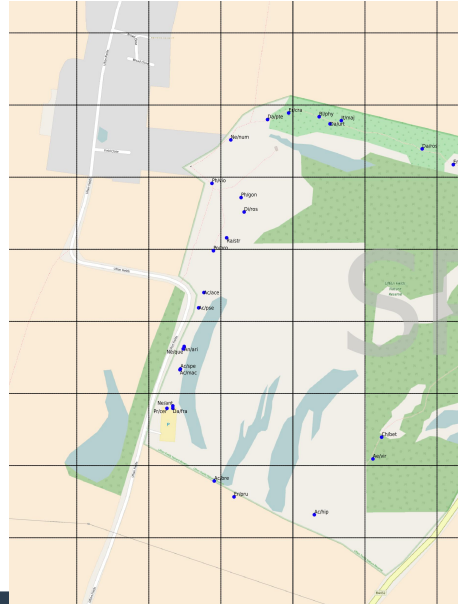
Ufton Fields Nature Reserve:
Environment Agency Lidar Data



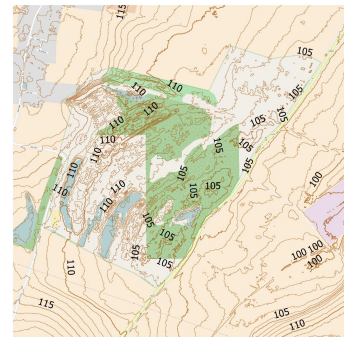
Hill-shaded Digital Terrain Model (DTM).
This shows the pattern of workings well. Useful for assessing where damper patches of ground may exist.



Hill-shaded Digital Surface Model (DSM).
This shows the elevation of surface features (buildings, hedges, walls & vegetation). As much of Ufton Fields is wooded this is not so easy to interpret.



Hill-shaded difference between DSM & DTM.
By subtracting the ground elevation from the surface elevation this now shows the relative heights of man made and natural features above ground.



Contours derived from DTM.
Contours at 1 metre interval were extracted from the DTM and are plotted here with 5 and 10 m contours shown more strongly. Similar contours can be extracted from other

Birmingham Street Trees, VC38

- Prepared for me
 - Check sample of trees in Birmingham open data
 - 1% sample (180ish)
 - Centre of city
 - QEH/University, Edgbaston
- Data use :
 - OpenStreetMap base map
 - Trees from Birmingham council
 - Quick colour coding by species/taxon



Birch species distribution: Polar Projection

- Prepared for me
 - *Semudobia* spp.
 - Galls in catkins & fruits
 - Cryptic spp?
- Data use :
 - AFE maps
 - Areas digitised
 - Polar projection
 - Print Layout

