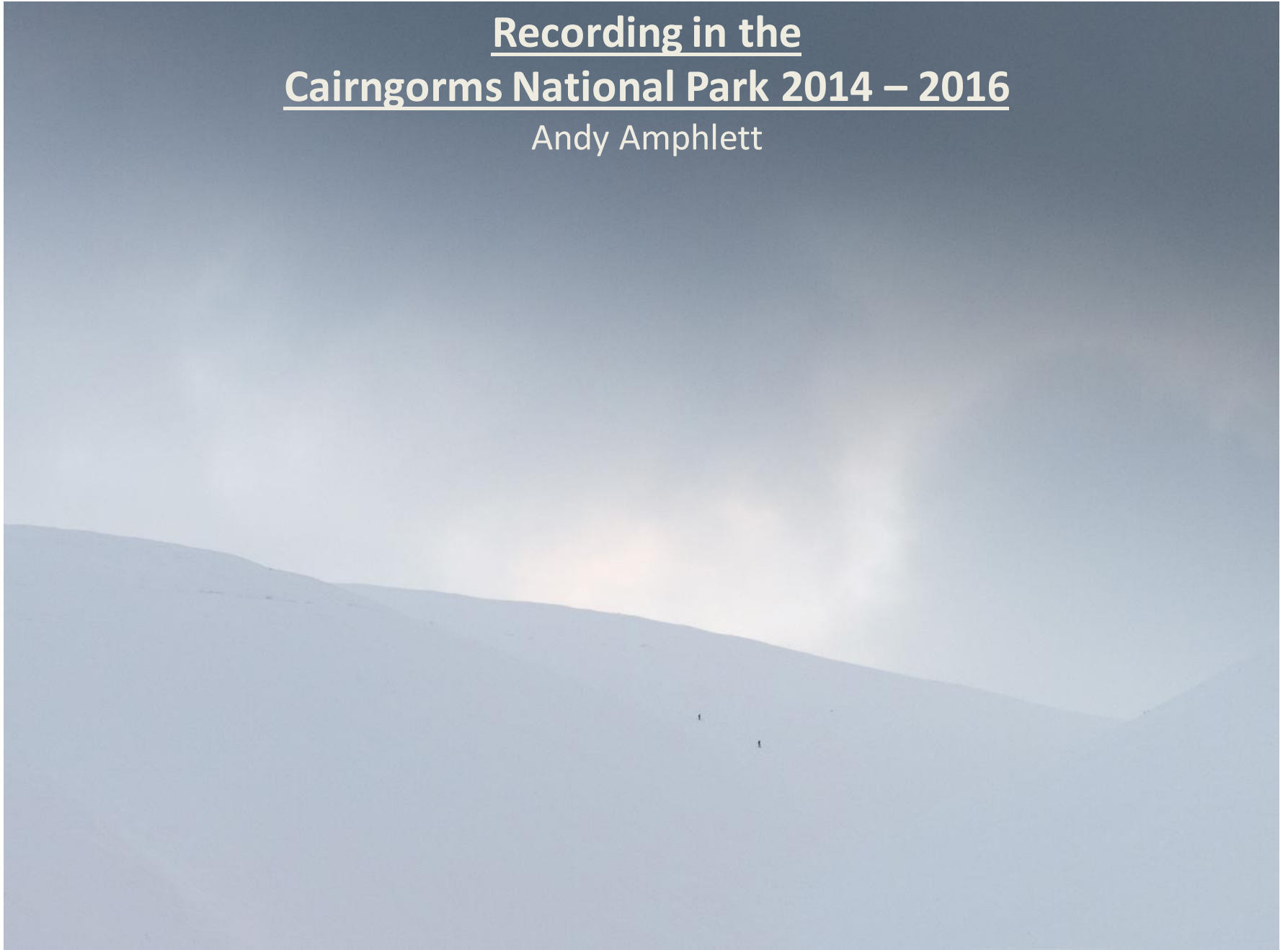


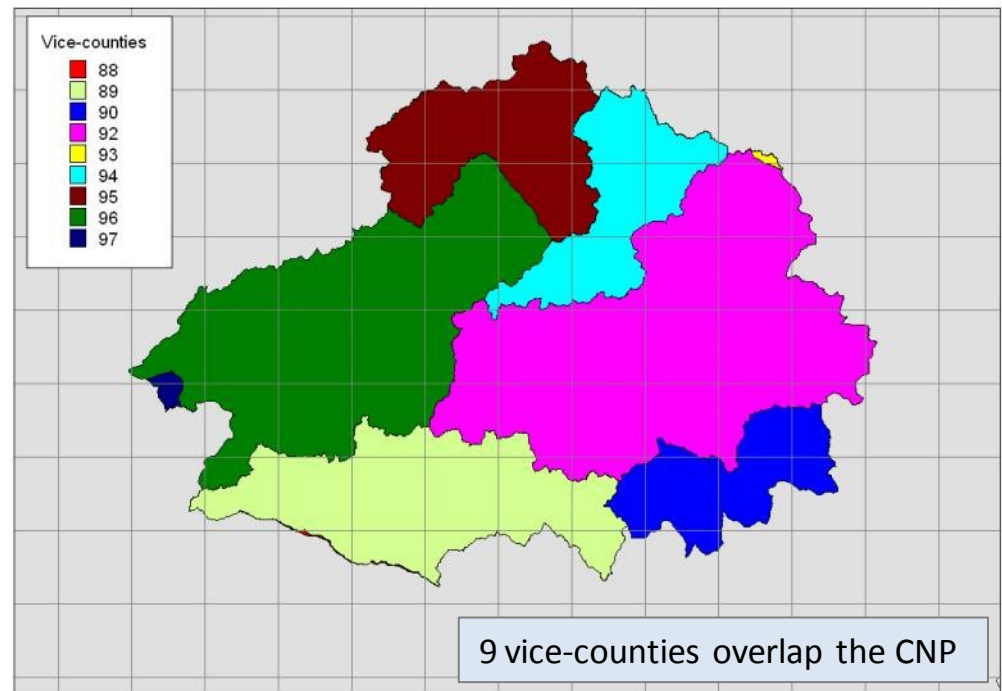
Recording in the  
Cairngorms National Park 2014 – 2016

Andy Amphlett



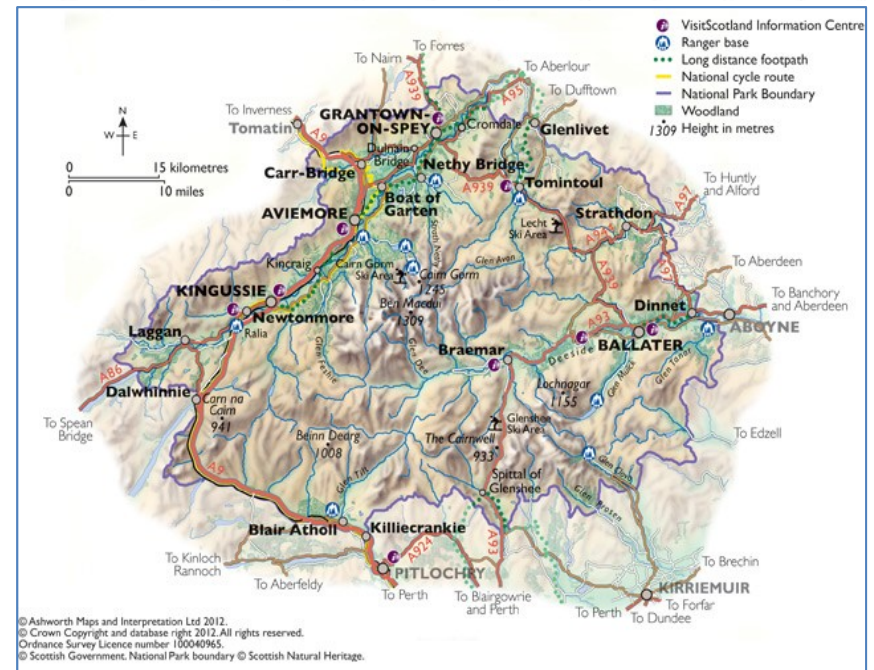
Recording in the  
Cairngorms National Park 2014 – 2016

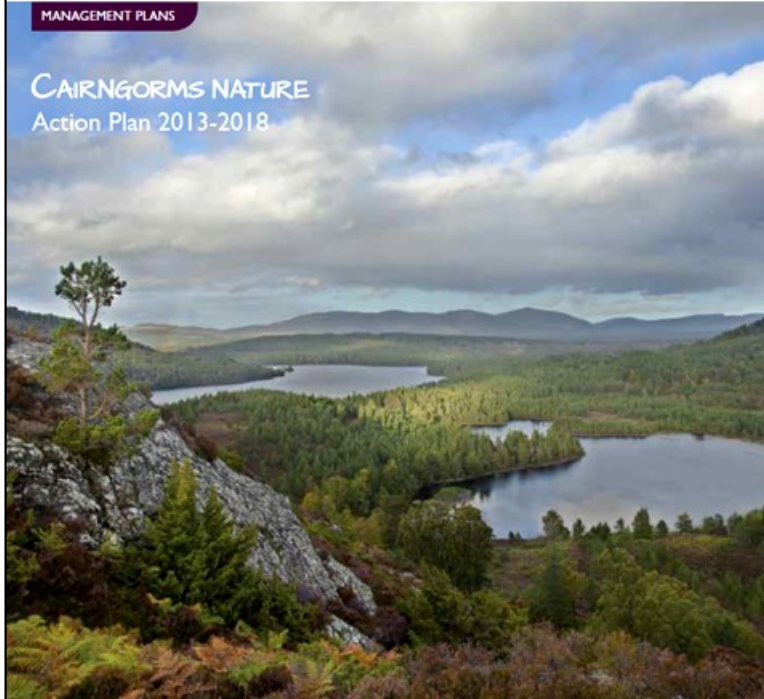




- Area = 4528km<sup>2</sup> (2nd in area to vc96)
- 65 hectads
- 1700+ taxa
  - 125 GB Endemics
  - 146 GB Red List species

**5% of area <300m AOD**  
**53% of area >600m AOD**  
**10% of area >900m AOD**





***Species mapping and monitoring will be even more comprehensive and up to date.***

Paid and un-paid researchers, recorders and enthusiasts already do a huge amount of good work. ***We would like to see this supported and developed,*** complementing a wide range of opportunities for people to contribute.

Highlight and ***encourage volunteer participation in biological recording schemes.***



## Primary objectives of the project

- Update hectad distributions to post 2000, for Atlas 2020.
- **Improve tetrad scale coverage of the CNP by targeted recording in tetrads with:**
  - a) few or no records in any date class, or
  - b) with few or no records post 1987.
- Demonstrate the ability of BSBI to collect and collate high quality botanical records from the CNP area, so as to benefit plant conservation in the CNP.

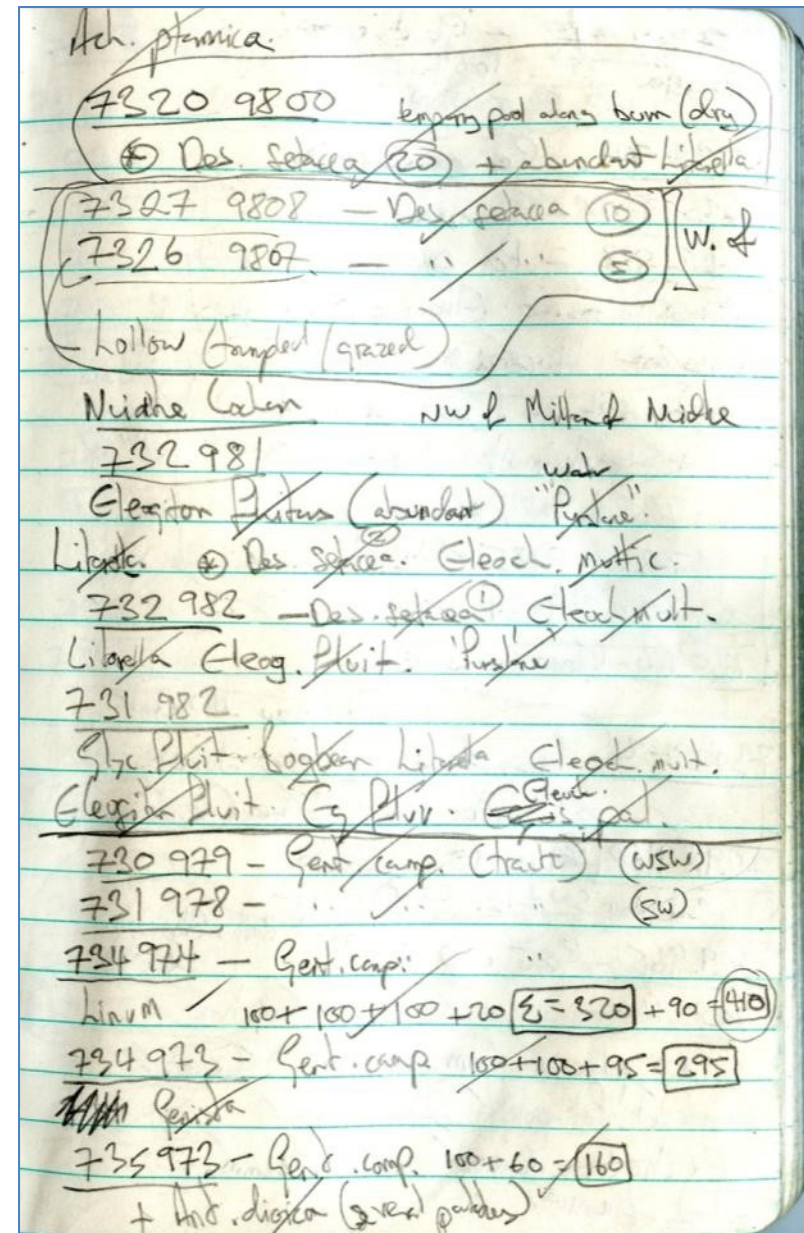
### •13 lead recorders

•79 people contributed records

•Median 278 records per person

•12 people each contributed >1000 records

•3 people each contributed >10,000 records (=53% of total)

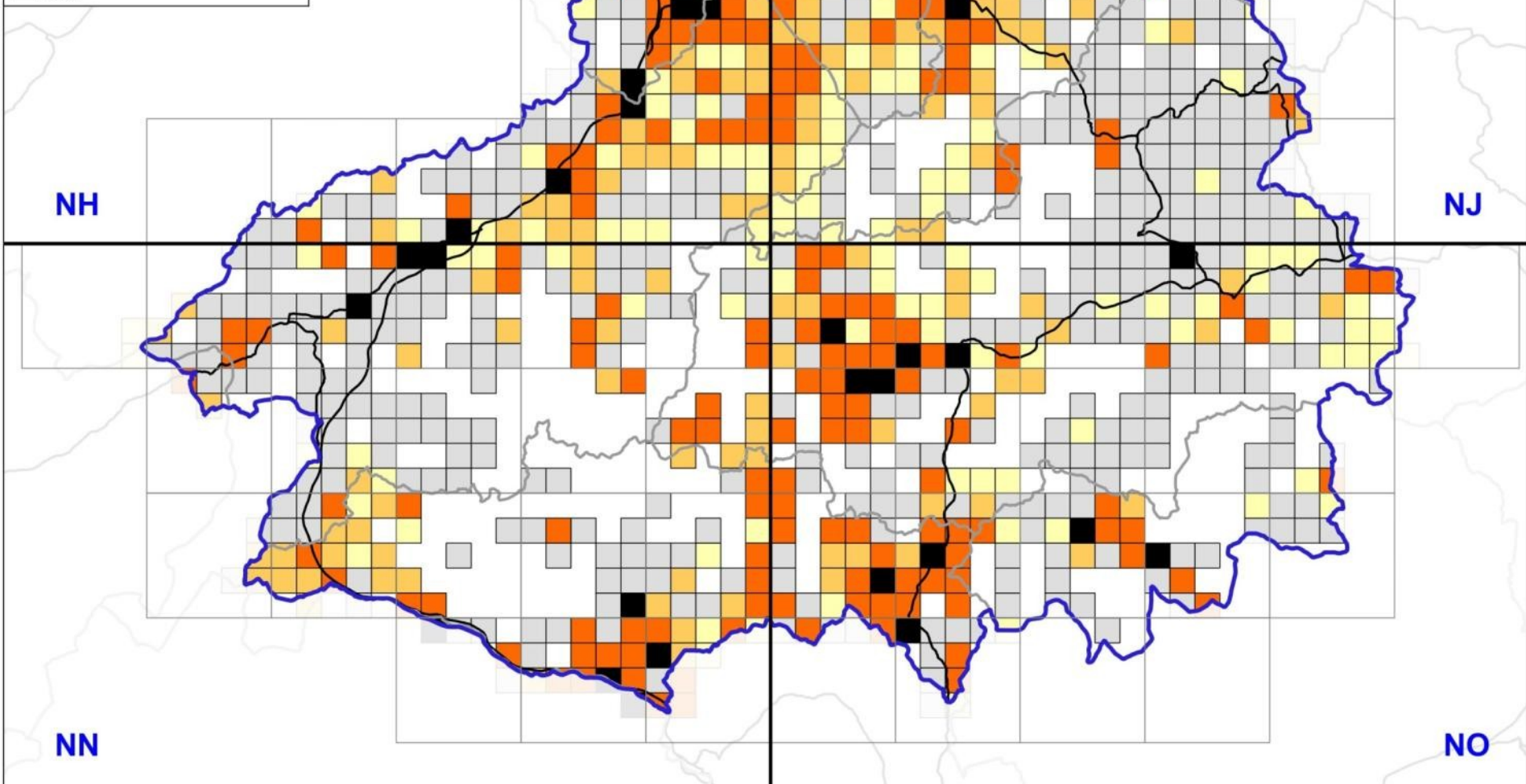


# CNP Taxa per tetrad 2000-2013

- 100km grid
- CNP intersecting hectads
- CNP boundary
- vc boundaries
- A roads

## CNP taxa per tetrad 2000 to 2013

- 0 - 10
- 10 - 50
- 50 - 100
- 100 - 200
- 200+

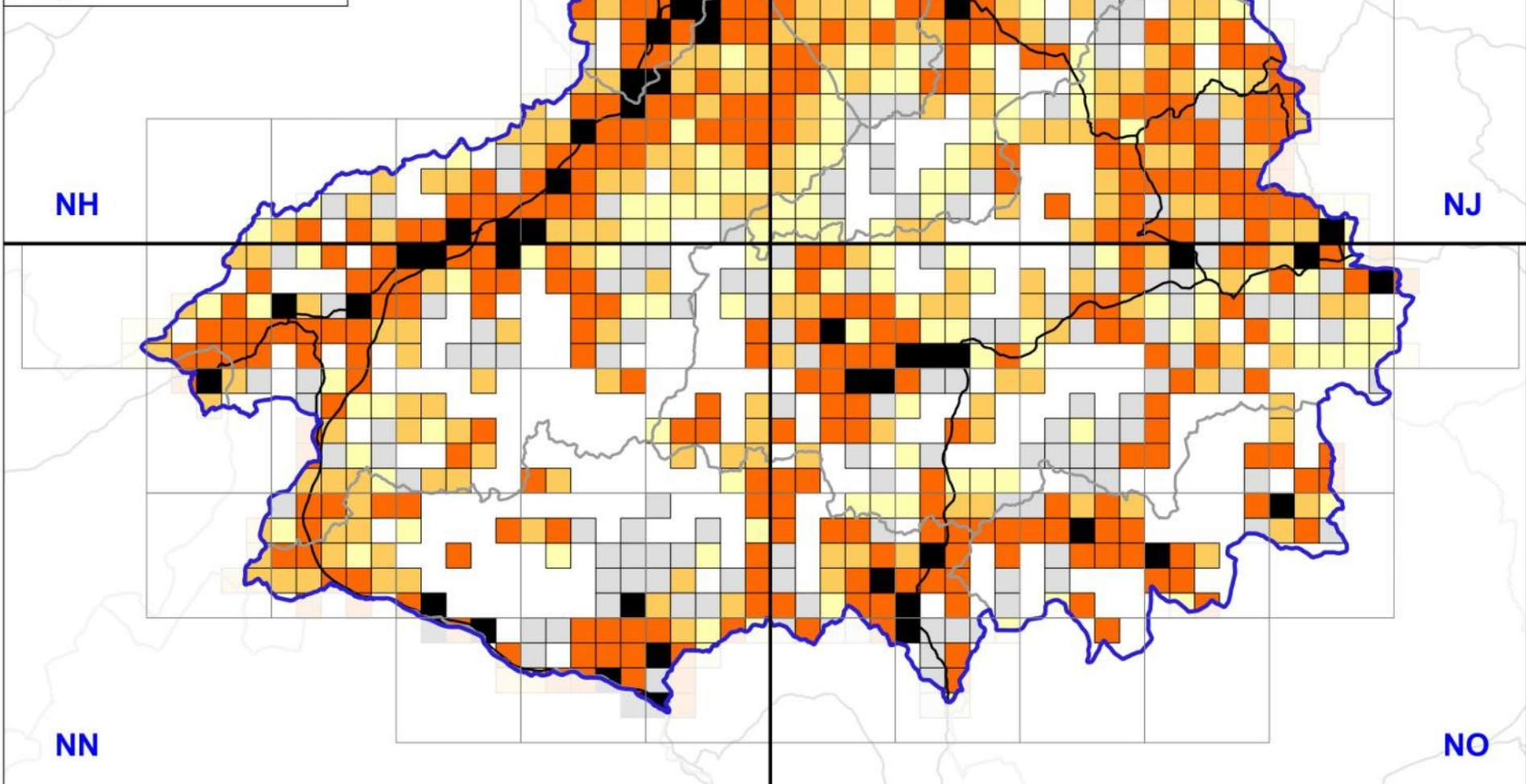


# CNP Taxa per tetrad 2000-2016

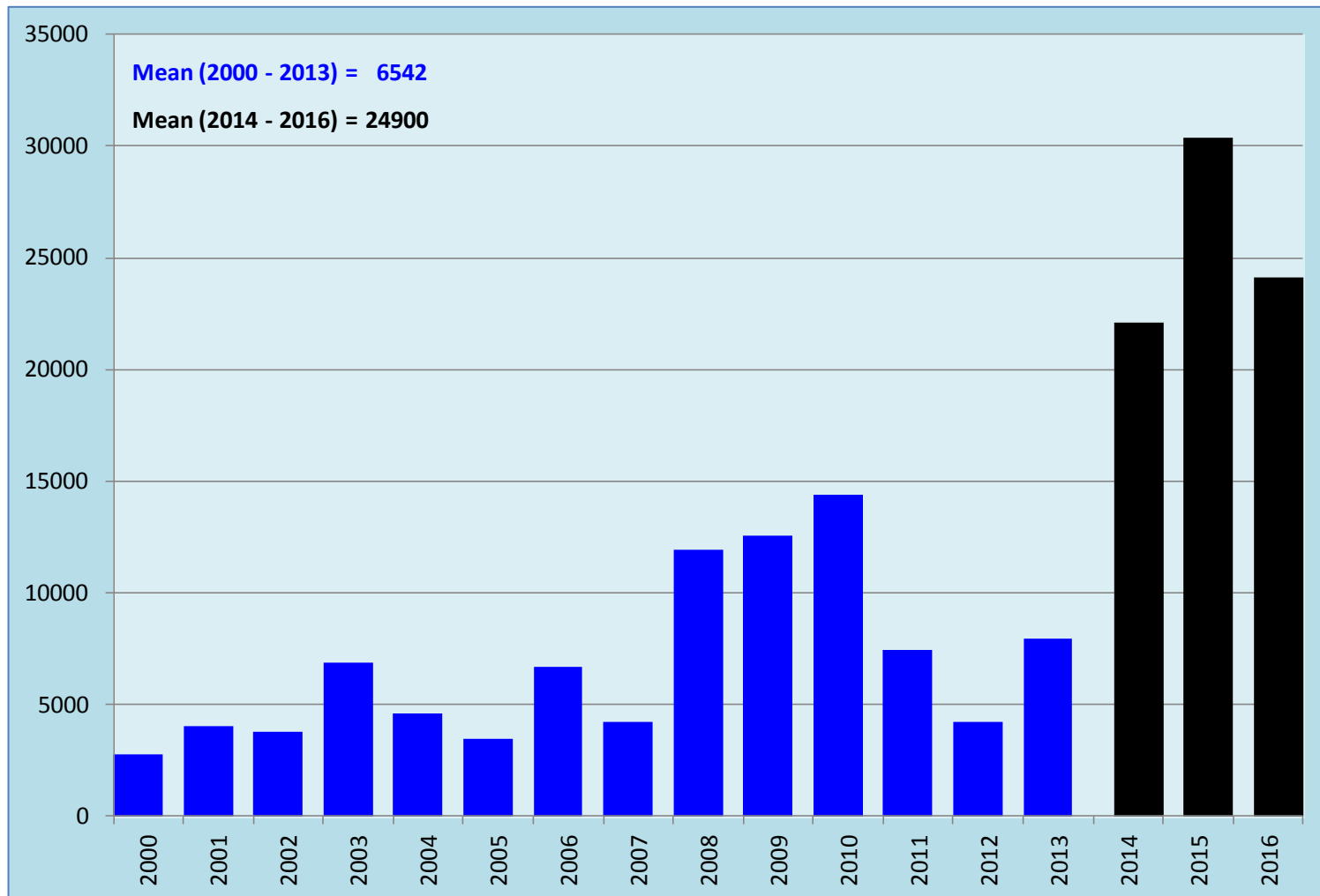
- 100km grid
- CNP intersecting hectads
- CNP boundary
- vc boundaries
- A roads

CNP taxa per tetrad 2000 to 2016 (24 Oct 2016)

- 0 - 10
- 10 - 50
- 50 - 100
- 100 - 200
- 200+



## CNP – Records per year, 2000 - 2013 cf 2014 - 2016



All 2014 – 2016 records on  
DDb, checked and validated

Taxon	Number of records 2014 - 2016
<i>Juniperus communis</i>	755
<i>Genista anglica</i>	301
<i>Gentianella campestris</i>	211
<i>Pyrola media</i>	167
<i>Lycopodium annotinum</i>	126
<i>Gnaphalium sylvaticum</i>	120
<i>Viola canina</i>	89
<i>Cornus suecica</i>	85
<i>Gnaphalium supinum</i>	62
<i>Salix lapponum</i>	58
<i>Spergula arvensis</i>	44
<i>Carex vaginata</i>	43
<i>Teesdalia nudicaulis</i>	43
<i>Deschampsia setacea</i>	39
<i>Equisetum pratense</i>	38
<i>Equisetum hyemale</i>	36
<i>Linnaea borealis</i>	30
<i>Coeloglossum viride</i>	28
<i>Drosera anglica</i>	28
<i>Carex capillaris</i>	27
<i>Sibbaldia procumbens</i>	27
<i>Vaccinium microcarpum</i>	26
<i>Ribes spicatum</i>	25
<i>Polystichum lonchitis</i>	24
<i>Drosera anglica</i> x <i>rotundifolia</i> = <i>D. x obovata</i>	19

Number of records of  
selected CNP RPR taxa

81% of records of RPR taxa at  
100m precision or better

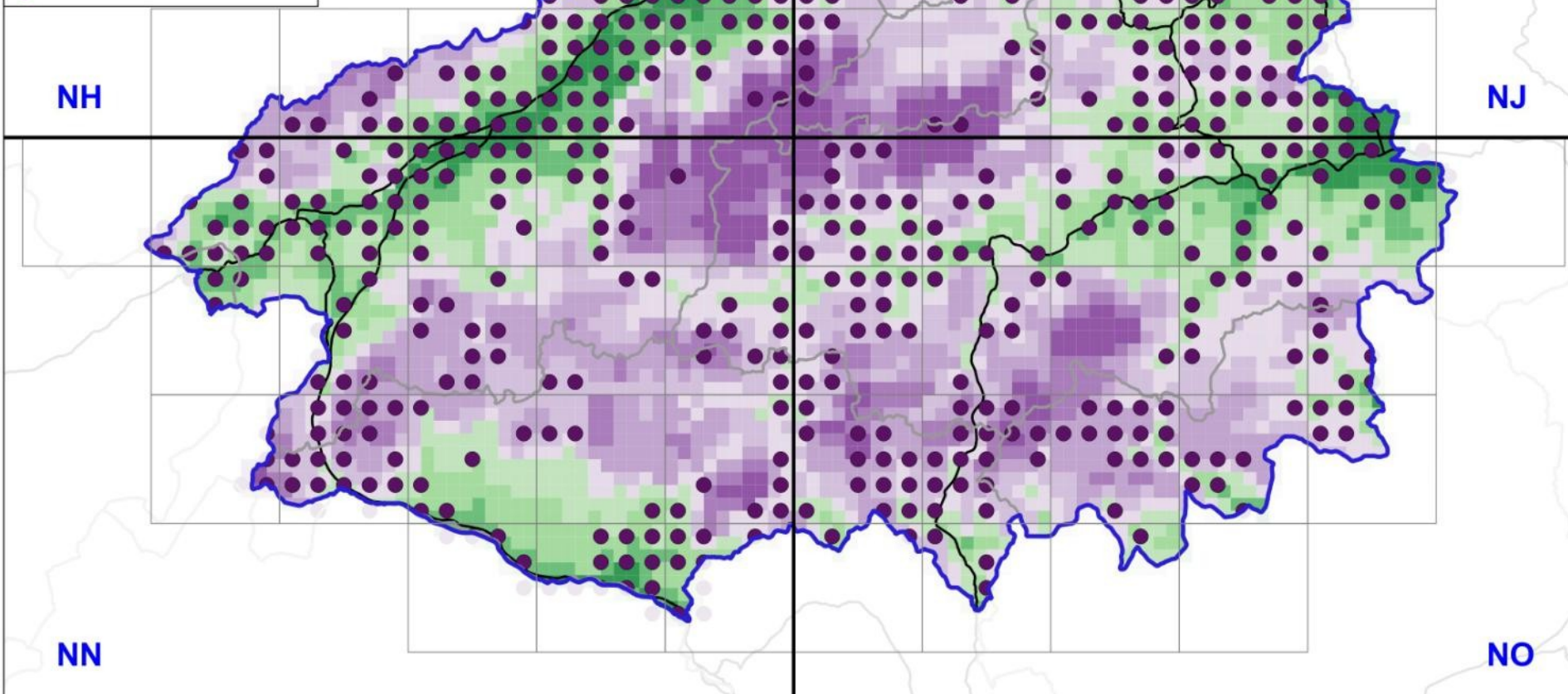


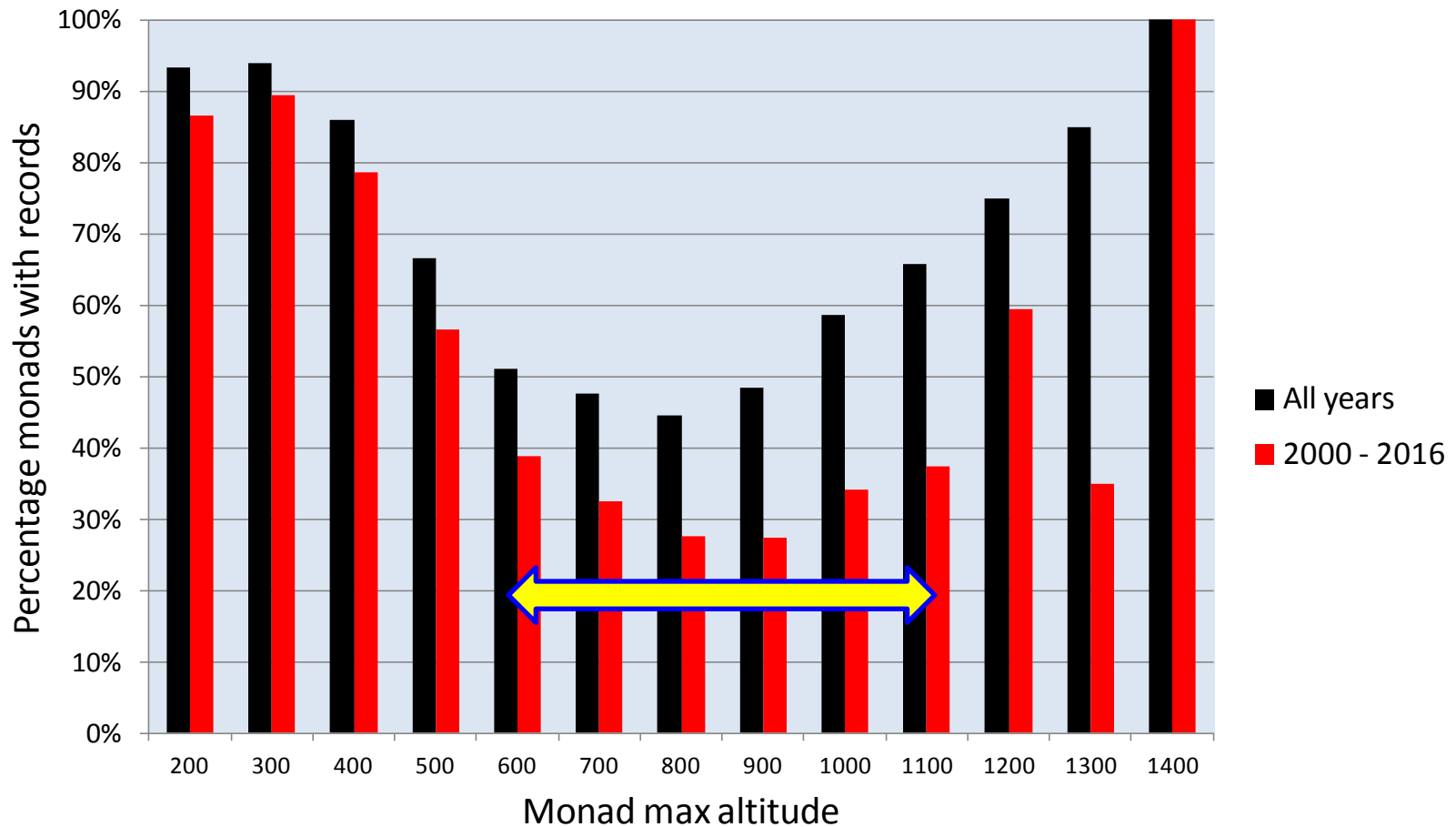
# CNP Taxa per tetrad 2000-2016

- 100km grid
- CNP intersecting hectads
- CNP boundary
- vc boundaries
- A roads

## CNP monad max elevation

- <300
- 300 - 400
- 400 - 500
- 500 - 600
- 600 - 700
- 700 - 800
- 800 - 900
- 900 - 1000
- >1000
- 50+ taxa





### Altitudinal range 500 – 1100m

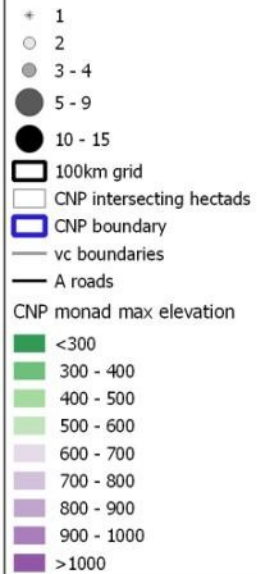
- 115 species & hybrids restricted to
- 287 species & hybrids have >50% of monad occurrences in

# The challenge

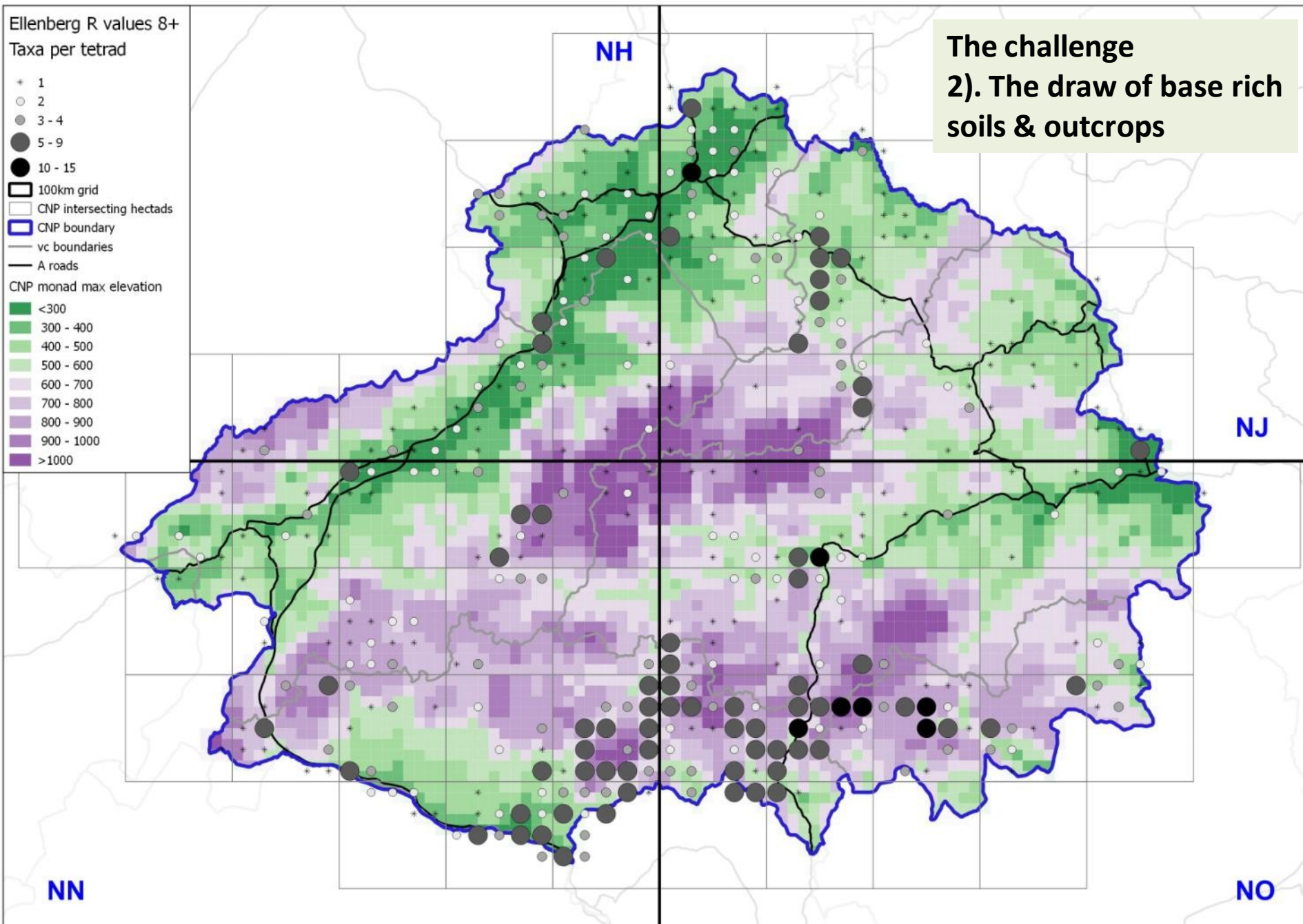
## 1). Remoteness



Ellenberg R values 8+  
Taxa per tetrad



**The challenge**  
**2). The draw of base rich**  
**soils & outcrops**



## The challenge

### 3). Muirburn intensity

*"I ... started with monad \*\*\*\*. This turned out to be the worst monad that I've ever botanised in ever! ... (it) produced only 23 species - and I really had to work for them. The southern half of the square was completely knackered by sheep and the northern half by burning. Things got a bit better in the other two monads that I covered within the tetrad but this one really was the pits!"*



## Examples of notable finds

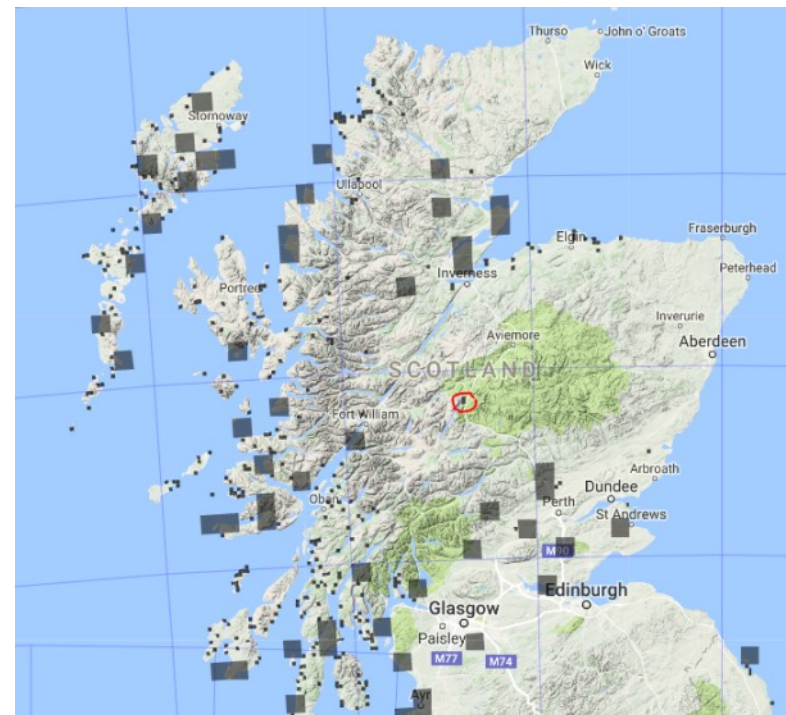


*Deschampsia setacea* (Bog Hair-grass) – ephemeral pool on moorland: 12 monads (24 locations) 2014 - 2016

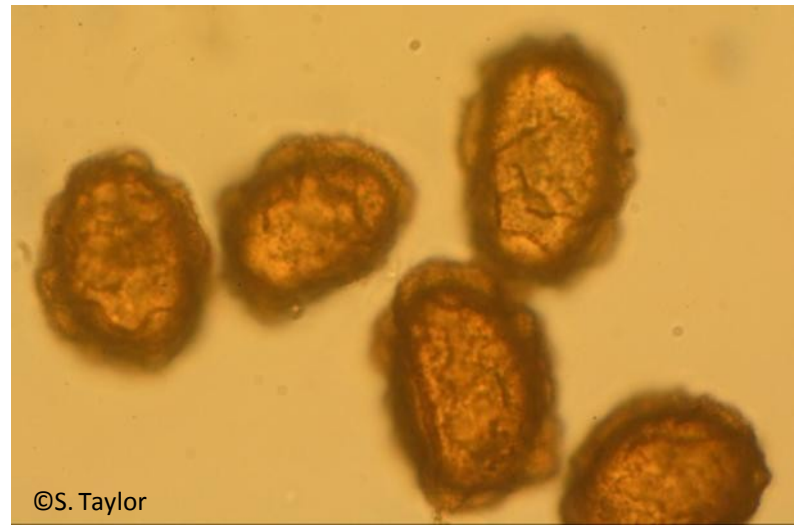
## Examples of notable finds



*Centunculus minimus* (Chaffweed) – new to the CNP



## Examples of notable finds



©S. Taylor

- Cystopteris dickieana* (Dickie's Bladder-fern) on
- 3 bridges
  - 5 natural rock outcrops



*Cystopteris fragilis* (Brittle Bladder-fern)

©S. Taylor



©S. Taylor

## Examples of notable finds

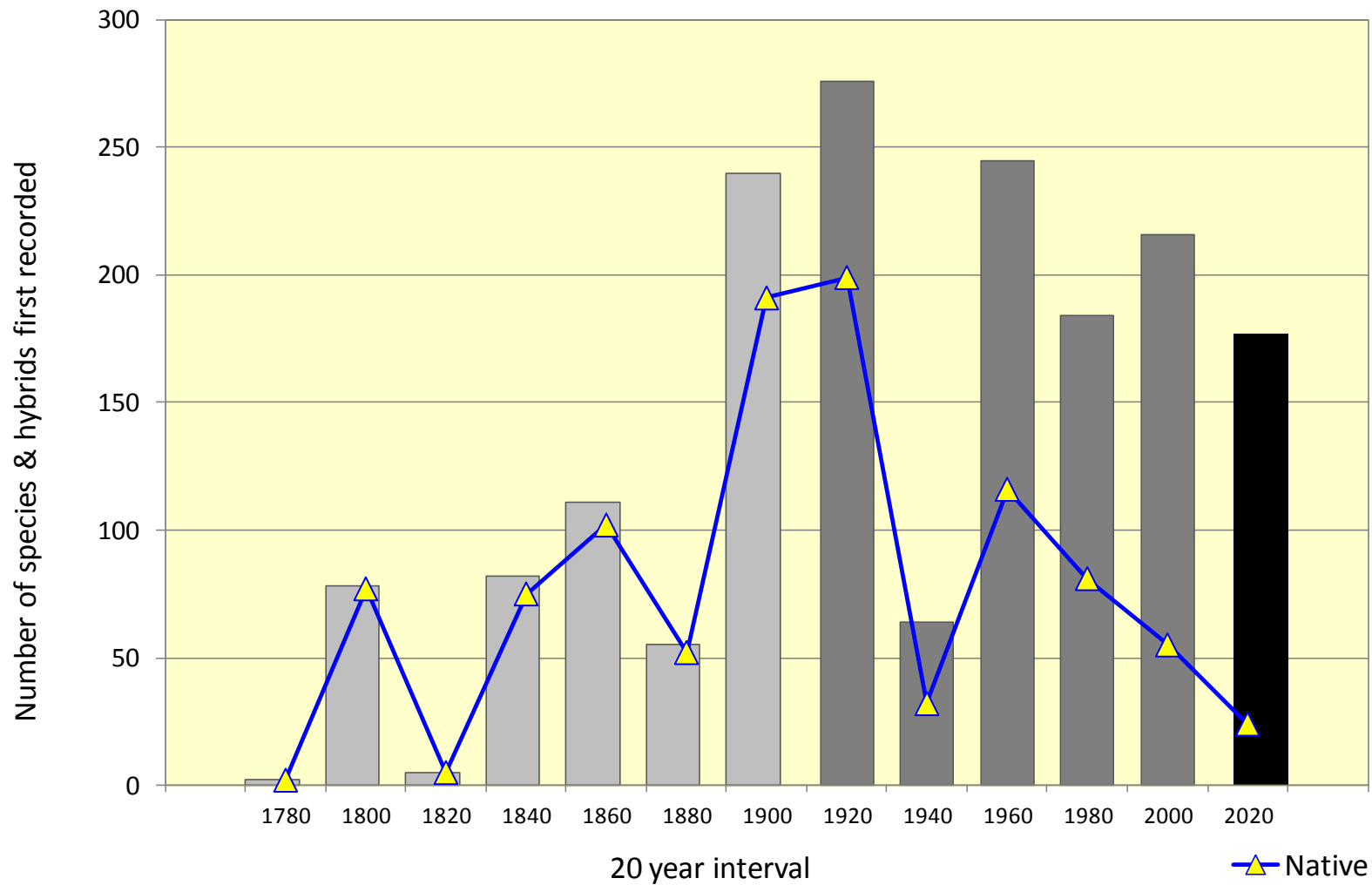


*Juncus balticus* (Baltic Rush) - 610m AOD



Stomata on stem

## Discovery of the flora of the CNP area



## Thank you to:

- CNPA (Andy Ford) – T&S funding
- Jim McIntosh – BSBI Scottish Officer
- BSBI VCRs, Members and other Recorders who collected and collated 75,000 records

